

## Product datasheet for **RC229075**

### LTBP1 (NM\_001166264) Human Tagged ORF Clone

#### Product data:

**Product Type:** Expression Plasmids  
**Product Name:** LTBP1 (NM\_001166264) Human Tagged ORF Clone  
**Tag:** Myc-DDK  
**Symbol:** LTBP1  
**Vector:** pCMV6-Entry (PS100001)  
**E. coli Selection:** Kanamycin (25 ug/mL)  
**Cell Selection:** Neomycin  
**ORF Nucleotide Sequence:** >RC229075 representing NM\_001166264  
Red=Cloning site Blue=ORF Green=Tags(s)

TTTTGTAATACGACTCACTATAGGGCGGCCGGAATTCGTCGACTGGATCCGGTACCGAGGAGATCTGCC  
 GCCGCGATCGCC

ATGGATACTAAGCTGATGTGTTGTTGTTCTTTTTCTCCCTGCCTCCGCTCCTAGTGAGTAACCACTG  
 GCCGCATCAAGGTGGTCTTTACTCCGAGCATCTGTAAGTGACCTGCACCAAGGGCAGCTGTGAGAACAG  
 CTGTGAGAGGGGAACACCACCCTCTCATTAGTGAGAATGGTCATGCTGCCGACACCCTGACGGCCAG  
 AACTCCGAGTGGTAATTTGCCATCTCCATGTGAATGGTGGCCAGTGCAGTTCAAGGGACAAATGTC  
 AGTGCCCTCCAAATTTACAGGAAAACCTTTGTGAGATCCAGTCCATGGTGCCAGCGTGCCTAACTTTA  
 TCAGCATTCCCAGCAGCCAGGCAAGGCGTTGGGGACGCATGTCATCCATTCAACACATACCTTGCCTCTG  
 ACCGTGACTAGCCAGCAAGGAGTCAAAGTAAAATTTCTCCTAACATAGTCAATATCCATGTGAAACATC  
 CTCCTGAAGCTTCCGTCCAGATACATCAGGTTTCAAGAATTGATGGCCCAACAGGCCAGAAGACAAAAGA  
 AGCTCAACCAGGCCAATCCCAAGTCTCGTACCAAGGGCTTCTGTCCAGAAGACCAGACCATACATTCC  
 ACATACTCCACCAGCAGGTCAATCCTCACGTCTACCCCGTGGCTGCTAAGACACAGCTTGGCCGGTGT  
 TCCAGGAAACCATGGGTACAGTGTGGCAAAGCGCTCCCTGGCCTTTCAAAGCAAGAGGACTGCTGTGG  
 AACTGTGGGTACCTCCTGGGGCTTAAACAAATGCCAGAAATGCCCAAGAAACCATCTTATCATGGATAC  
 AACCAATGATGGAATGCCTACCGGTTATAAGCGGGTTAACAACACCTTTTGCCAGATATTAATGAAT  
 GTCAGCTACAAGGTGATGCCCTAATGGTGAAGTGTGTTGAATACCATGGGCAGCTATCGATGTACCTGCAA  
 AATAGGATTTGGGCCGGATCCTACCTTTTCAAGTTGTGTTCTGATCCCCCTGTGATCTCGGAAGAGAAA  
 GGGCCCTGTTACCAGCTTGTGAGTCTGGAAGACAGTGTATGCACCCTCTGTCTGTTACCTCACCAGC  
 AGCTCTGCTGTTGAGTGTGGCAAGGCTGGGGCCACACTGTGAGAAATGTCCTCCAGGCACAGC  
 TGCTTTTAAAGAAATCTGCTCGTGGTGAATGGTTATACGGTTTCTGGCGTTATAGACGCAGGCCAATC  
 CATCACCATGTAGTTAAGGACCTGATTTGTCAAGCCAAAGAACTCAACCTGTTGCTAAAAGTACTC  
 ATCCTCCACCTCTCCAGCCAAGGAAGAGCCAGTGGAGGCCCTGACCTTCTCCCGGGAACACGGGCCAGG  
 AGTGGCGGAGCCAGAAGTGGCAACTGCACCCCTGAAAAGGAAATACCTTCATTGGATCAAGAGAAAACC  
 AACTTGAGCCTGGTCAACCCAGCTGTCTCCAGACATTTCCACTATTCTGCATCCACAGTTTCCAG  
 TAGTGATTGAAAAACATCACCTCCTGTGCCTGTTGAAGTAGCTCCTGAAGCTTCTACGTCTAGTGCCAG  
 CCAAGTGATTGCTCCTACTCAAGTGACAGAAATCAATGAATGACTGTGAACCCTGATATCTGTGGAGCA



[View online >](#)

GGACACTGCATTAACCTACCAGTGAGATATACCTGTATATGCTACGAGGGCTACAGGTTCACTGAACAAC  
AGAGGAAATGTGTGGATATTGATGAGTGTACTCAGGTCCAACACCTCTGCTCCCAGGGCCGCTGTGAAAA  
CACCGAGGGAAGTTTCTTGTGCAATTTGCCAGCAGGATTTATGGCCAGTGAGGAGGGTACTAACTGCATA  
GATGTTGACGAATGCCTGAGGCCGACGCTGTGGGGAGGGGCACTGTGTCAATACTGTGGGGCCCTTCC  
GGTGTGAATACTGTGACAGCGGGTACCCGATGACTCAGAGAGGCCGTTGTGAGGATATTGATGAATGTTT  
GAATCCAAGCACTTGCCAGATGAGCAGTGTGTGAATTTCTCTGGATCTTACCAGTGCCTTCCCTGCACA  
GAAGGATCCGAGGCTGGAATGGACAGTGCCTTGATGTGGACGAGTGCCTGGAACCAACGCTCGCGCAA  
ATGGTGATTGTTCCAACCTTGAAGGCTCCTACATGTGTTTATGCCACAAAGGCTATACCCGGACTCCGGA  
CCACAAGCACTGTAGAGATATTGATGAATGTCAGCAAGGGAATCTATGTGTAAACGGGCAGTGCAAAAAAT  
ACCGAGGGCTCCTTCAGGTGCACCTGTGGACAGGGGTACCAGCTGTGGCAGCTAAAGACCAGTGTGAAG  
ACATTGATGAATGCCAGCACCGTCATCTCTGTGCTCATGGCAGTGCAGGAACACTGAGGGCTCTTTTCA  
ATGTGTGTGTGACCAGGGTTACAGAGCATCTGGGCTTGGAGACCACTGTGAAGATATCAATGAATGCTTG  
GAGGACAAGAGTGTGGCCAGAGGAGACTGCATTAATACTGCAGGGTCTATGATTGACTTGTCCGG  
ATGGATTTAGCTAGATGACAATAAACATGTCAAGATATTAATGAATGTGAACATCCAGGGCTCTGTGG  
TCCGCAAGGGGAGTGCCTAAACACAGAGGGTTCTTCCATTGTGTCTGCCAGCAGGGTTTCTCAATCTCT  
GCAGATGGCCGTACGTGTGAAGATGTGAATGAATGTGAAGTGTGCTCAGTGGGGTGTGTGGTGAAGCCTTCT  
GTGAAAACGTGGAAGGGTCTTCCCTGTGCGTGTGTGCTGATGAAAACCAAGAGTACAGCCCCATGACTGG  
GCAGTGCCGCTCCCGGACCTCCACAGATTTAGATGTAGATGTAGATCAACCCAAAGAAGAAAAGAAAGAA  
TGCTACTATAATCTCAATGACGCCAGTCTCTGTGATAATGTGTTGGCCCCAATGTCACGAAACAAGAAAT  
GCTGCTGTACATCAGGCGCGGGATGGGGAGATAACTGCGAAATCTTCCCCTGCCCGGTCTTGGAAGTGC  
TGAGTTCACTGAAATGTGTCCCAAAGGGAAAGGTTTTGTGCTGCTGGAGAATCATCTTGAAGCTGGT  
GGTGAGAACTATAAGATGCAGATGAATGCCTACTTTTTGGACAAGAAATCTGCAAAAATGGTTTCTGTT  
TGAACACTCGGCCTGGGTATGAATGCTACTGTAAGCAAGGGACGTAATGATCCTGTGAAACTGCAGTG  
CTTTGATATGGATGAATGTCAAGACCCAGTAGTTGATTGATGGCCAGTGTGTTAATACAGAGGGCTCT  
TACAACCTGCTTGTACTCACCCATGGTCTGGATGCGTCAGAAAAAAGATGTATACGACCGGCTGAGT  
CAAACGAACAAATAGAAGAACTGATGTCTACCAAGATTTGTGCTGGAAACATCTGAGTGTGAATACGT  
GTGTAGCCGGCTCTTGTGGCAAGCAGACAACGTACTGAGTGTGCTGTCTGTATGGAGAGGCTGG  
GGCATGCAGTGTGCCCTGTCCCTGAAGGATTCAGATGACTATGCTCAGCTGTGTAACATCCCCGTGA  
CGGGACCGCGCAGCCATATGGACGGGACGCTTGGTTGACTTCAGTGAACAGTATACTCCAGAAGCCGA  
TCCCTACTTCATCAAGACCGTTTTCTAAATAGCTTTGAGGAGTTACAGGCTGAGGAATGCGGCATCCTC  
AATGGATGTGAAAATGGTCGCTGTGTGAGGGTCCAGGAAGGTTACACCTGCGATTGCTTTGATGGGTATC  
ACTTGGATACGGCAAGATGACCTGTGTGATGTAATGAATGCGATGAGTTGAACAACCGGATGTCTCT  
CTGCAAGAATGCCAAGTGCATTAACACCGATGGTTCTACAAGTGTGTTGTCTGCCAGGCTACGTGCC  
TCTGACAAGCCAACTACTGCACTCCGTTGAATACCGCCTTGAATTTAGAGAAAGACAGTGCCTGGAG

ACGCGTACGCGGCCGCTCGAGCAGAACTCATCTCAGAAGAGGATCTGGCAGCAATGATATCCTGGATT  
ACAAGGATGACGACGATAAGGTTTAA

**Protein Sequence:** >RC229075 representing NM\_001166264  
 Red=Cloning site Green=Tags(s)

```

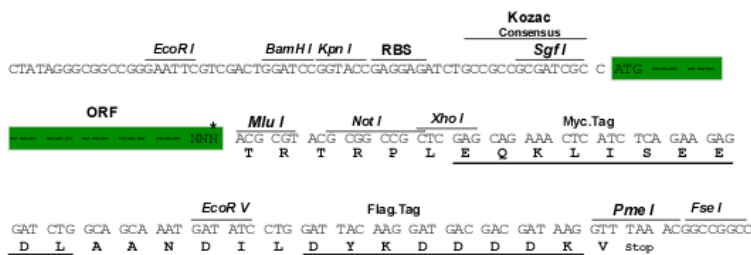
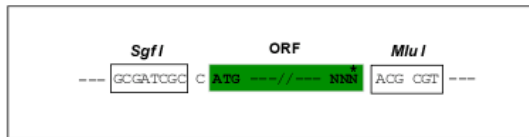
MDTKLMCLLFFFSLPPLLVSNHTGRIKVVFTPSICKVTCTKGSCQNSCEKGNTTTLISENGHAADTLTAT
NFRVVIICHLPCMNGGQCSSRDKQCPPNFTGKLCQIPVHGASVPKLYQHSQQPGKALGTHVIHSTHTLPL
TVTSQQGVKVKFPPNIVNIHVKHPPPEASVQIHQVSRIDGPTGQKTKEAQPGSQVSYQGLPVQKTQTIHS
TYSHQQVIPHVYPVAAKTQLGRCFQETIGSQCGKALPGLSKQEDCCGTGT SWGFNKCQKCPKPSYHGY
NQMMDECLPGYKRVNNTFCQDINECQLQGVCPNGECLNTMGSYRCTCKIGFGPDPTFSSCVPDPPVISEEK
GPCYRLVSSGRQCMHPLSVHLTKQLCCCSVGKAWGPHCEKCLPGTAAFKEICPGGMGYTVSGVHRRRPI
HHHVKGKPVFVKPKNTQPVAKSTHPPPLPAKEEPVEALTF SREHGPVGAEPVATAPPEKEIPSLDQEK
KLEPGQPQLSPDISTIHLHPQFPVIEKTSPPVPVEVAPEASTSSASQVIAPTQVTEINECTVNPDICGA
GHCINLPVRYTICIEGYRFSEQQRKCDIDECTQVQHLCSQGRCENTEGSFLCICPAGFMASEEGTNCI
DVDECLRPDVCGEHCVNTVGAFRCEYCDSGYRMTQRGRCEDIDECLNPSTCPDEQCVNSPGSYQVCPCT
EGFRGWNGQCLDVDECLPNVCANGDCSNLEGSYMC SCHKGYTRTPDHKHC RDIDE CQQGNLCVNGQCKN
TEGSFRCTCGQGYQL SAAKDQCEDIDECQHRHLCAHGQCRNTEGSFQCVC DQGYRASGLGDHCE DINECL
EDKSVCQRGDCINTAGSYDCTCPDGFQLDDNKTCQDINECEHPGLCGPQGECLNTEGSFHCVCQQGFSIS
ADGRTCEDVNECELLSGVCGEAF CENVEGSFLCVCADENQEYSPMTGQCRSRTSTDLDVDVDQPKKEEKE
CYYNLNDASLCDNVLAPNVTKQECCTSGAGWGDNCEIFPCPVLGTAEFTEMCPKKGKGFVPAGESSEAG
GENYKDADECLLFGQEI CKNGFLNTRPGYECYCKQGTYYDPVKLQCFDMDECQDPSSCIDGQC VNTEGS
YNCFC THPMVLDASEKRCIRPAESNEQIEETDVYQDLCEHL SDEYVCSRPLVGKQT TYTECCCLYGEAW
GMQCALCPLKSDDYAQLCNIPVTGRRQPYGRDALVDFSEQYTP EADPYFIQDRFLNSFEELQAE ECGIL
NGCENGRCVRVQEGYTCDFDGYHLDTAKMTCVDVNECDELNNRMSLCKNAKCI NTDGSYKCLCLPGYVP
SDKPNYCTPLNTALNLEKDSLE
  
```

TRTRPLEQKLISEEDLAANDILDYKDDDDKV

**Restriction Sites:**  
**Cloning Scheme:**

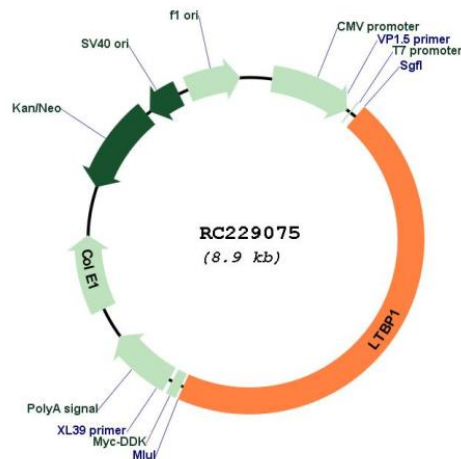
SgfI-MluI

Cloning sites used for ORF Shuttling:



\* The last codon before the Stop codon of the ORF

## Plasmid Map:



**ACCN:** NM\_001166264

**ORF Size:** 4059 bp

**OTI Disclaimer:** The molecular sequence of this clone aligns with the gene accession number as a point of reference only. However, individual transcript sequences of the same gene can differ through naturally occurring variations (e.g. polymorphisms), each with its own valid existence. This clone is substantially in agreement with the reference, but a complete review of all prevailing variants is recommended prior to use. [More info](#)

**OTI Annotation:** This clone was engineered to express the complete ORF with an expression tag. Expression varies depending on the nature of the gene.

**Components:** The ORF clone is ion-exchange column purified and shipped in a 2D barcoded Matrix tube containing 10ug of transfection-ready, dried plasmid DNA (reconstitute with 100 ul of water).

**Reconstitution Method:**

1. Centrifuge at 5,000xg for 5min.
2. Carefully open the tube and add 100ul of sterile water to dissolve the DNA.
3. Close the tube and incubate for 10 minutes at room temperature.
4. Briefly vortex the tube and then do a quick spin (less than 5000xg) to concentrate the liquid at the bottom.
5. Store the suspended plasmid at -20°C. The DNA is stable for at least one year from date of shipping when stored at -20°C.

**RefSeq:** [NM\\_001166264.1](#), [NP\\_001159736.1](#)

**RefSeq ORF:** 4062 bp

**Locus ID:** 4052

**UniProt ID:** [Q14766](#)

**Cytogenetics:** 2p22.3

**Protein Families:** Druggable Genome, Secreted Protein

**Protein Pathways:** TGF-beta signaling pathway

**MW:** 148.46 kDa

**Gene Summary:** The protein encoded by this gene belongs to the family of latent TGF-beta binding proteins (LTBPs). The secretion and activation of TGF-betas is regulated by their association with latency-associated proteins and with latent TGF-beta binding proteins. The product of this gene targets latent complexes of transforming growth factor beta to the extracellular matrix, where the latent cytokine is subsequently activated by several different mechanisms. Alternatively spliced transcript variants encoding different isoforms have been identified. [provided by RefSeq, Jul 2008]