

Product datasheet for RC229072

KDM3A / JHDM2A (KDM3A) (NM_001146688) Human Tagged ORF Clone

Product data:

Product Type:	Expression Plasmids
Product Name:	KDM3A / JHDM2A (KDM3A) (NM_001146688) Human Tagged ORF Clone
Tag:	Myc-DDK
Symbol:	KDM3A / JHDM2A
Synonyms:	JHDM2A; JHMD2A; JMJD1; JMJD1A; TSGA
Mammalian Cell Selection:	Neomycin
Vector:	pCMV6-Entry (PS100001)
E. coli Selection:	Kanamycin (25 ug/mL)
ORF Nucleotide Sequence:	>RC229072 ORF sequence Red=Cloning site Blue=ORF Green=Tags(s)

TTTTGTAATACGACTCACTATAGGGCGGCCGGAATTCGTCGACTGGATCCGGTACCGAGGAGATCTGCC
GCCCGCATCGCC

ATGGTGCTCACGCTCGGAGAAAGTTGGCCGGTATTGGTGGGGAGGAGTTTCTCAGTCTGTCCGACGCC
ACGGCAGCGATGGCAGCCACGACAGCTGGGACGTGGAGCGCGTCGCCGAGTGGCCCTGGCTCTCCGGGAC
CATTGAGCTGTTTCCCACACCGACGTTACCAAGAAGGATCTGAAGGTGTGTGGAATTTGATGGGGAA
TCTTGGAGAAAAGAAGATGGATAGAAGTCTACAGCCTTCTAAGGAGAGCATTCTTTAGTAGAACATAATT
TGGTTTTAGCTGAACGAAAGTCACCTGAAATTTCTGAACGAATTGTACAGTGGCCTGCAATAACGTACAA
ACCTCTGTTGGACAAAGCTGGTTTTGGGATCCATAAATTCTGTTTCGCTTTCTGGGAGATCAACAAAGAGTA
TTCTTTCTAAAGACCTTTTGAAGCCTATACAGGATGTAACAGTCTTCGACTTTCTTTACGGATAATC
AGATTGTCAGTAAAGAATTTCAAGCTTTGATTGTGAAGCATTAGATGAAAGCCATCTTTTAAAAGGTGA
CAAAAACCTTAGTTGGTTCAGAAGTAAAAATTTATAGCTTGGACCCATCTACTCAGTGGTTTTTCAGCAACC
GTTATAAATGAAACCCAGCATCAAAAACCTTTCAAGTCAACTGTGAGGAGATCCAGCACTGAAAATTG
TTGATCCGTCAGTATTCATGTTGAAGTGTACACGATAACCTTGTGACATGTGGTAATTTCTGCAAGAA
TGGAGCTGTAACGCAAGTCTTCTGAGAATAATGGAACCCCTGGTTTTCAAACAAGCAAAATCTTGCTCT
GAGGCCCTCCCAGTATGTGTCCTGTGCAGTCTGTACCTACAACAGTTTTTAAGGAGATACTGCTTGGCT
GTACTGCGGCAACTCCACTAGTAAGGACCCAAGACAGCAAAGTACTCCCAGGCTGCCAACTCTCCACC
TAACCTTGGAGCAAAAATTCCTCAAGGATGTCATAAAACAAGTTTACCAGAGGAAATTTCTTCTGTCTA
AATACAAAGTCTGAAGCTCTGAGAACAAAACCAGATGTCTGCAAAGCAGGGTTGCTCTCAAAGTCTCTC
AGATTGGAAGTGGAGACTTGAAAATTTGACTGAGCCAAAAGGCAGCTGTACTCAGCCTAAGACAAAAC
TGATCAGGAAAACAGATTGGAGTCTGTTCCACAAGCATTGACTGGCCTTCTAAGGAGTGCTTACCTACA
AAGGCTTCTTCTAAGGCAGAATTGAAAATTTGCCAATCCTCCTGAACTGCAGAAGCACCTAGAACATGCAC
CTTCCCACATCGGATGTTTCAAATGCACCAGAAGTAAAAGCAGGTGCAATAGTGATAGCCCTAATAACTG
TTCAGGAAAAAGGTAGAACCTTCAGCTTTAGCTTGGCGATCACAGAATTTAAAGGAATCTTCAGTAAAA



GTAGATAATGAAAGCTGTTGTTCAAGAAGCAACAATAAAATCCAGAATGCCCATCCAGGAAGTCGGTTT
TGACAGACCCAGCTAAACTCAAAAAGCTGCAACAGAGTGGCGAGGCCCTTCGTACAGGATGATTCTTGTG
GAACATCGTGGCACAGTTGCCTAAATGCCGAGAGTGTGCGTTGGACAGTCTCCGCAAGGATAAGGAGCAA
CAGAAGGACTCACCTGTGTTTTGCCGCTCTTTCACTTCAGGAGTTACAATTCAACAAACATGGTGTG
TGCGGGTAGAAGGCTTCTTAACACCAACAAGTATGACAATGAAGCAATTGGCTTGTGGTTACCTTTAAC
CAAAAACGTTGTGGGATGATTTGGACACAGCAAAGTACATCTTGCCAAACATTGGAGACCACTTCTGT
CAATGGTGATTTCTGAAAAGGAAGCTATGTCAACTATTGAGCCACACAGACAGGTTGCTTGAAGCGGAG
CTGTCAAAGGTGTTGAGAAAATGTGTGATGTGTGCGACACCACCTCTTCAACCTGCACTGGGTGTGTC
TCGGTGTGGGTTTGGAGTATGTGTGGACTGCTACCGGATGAAGAGAAAAGAAATTGCCAACAGGGTGTGCT
TACAAGACTTTCTCTTGCTAAAATGTGTGAAGAGTCAAGATACATGAACCAGAGAACTTAATGCCACAC
AGATCATTCTGGAAAAGCACTCTATGATGTTGGAGACATTGTTCACTTCTGTAAGAGCGAAATGGGAAT
AAAGGCAAACCTGCCCTTGTTCAAACAGGCAATTCAAACCTTTTTCAAAGCCAGCCTCAAAGGAAGACCTA
AAACAGACTTCTTAGCTGGAGAAAACCGACTCTTGGTGCAGTGTCCAGCAGAATCCCTCAGTGTGG
AGCCAGCAGCTGTGGTGGGAAGCAGCCTCAAGCCAGCCGGCAGCATGAAGCCTGCCTGTCCAGCCAG
CACATCTCTCTAAACTGGCTGGCCGACCTAACAGCGGGAATGTCAACAAGGAAAACAAGGAAAAACAA
CCAACAATGCCAATTTTAAAGAATGAAATCAAATGCCTTCCACCCTCCACCTTTAAGCAAATCCAGCA
CAGTCTCCATACGTTTAAACAGCACAATTTTGACACCCGTAAGCAACAACAATTTCTGGTTTCTCCGGAA
TCTCTGAATTTCTTACAGGAAAGACAGAAAATGGACTCAAGAAATACACCAAAAATCCTTGATGACATC
TTTGCCTCTTGGTGCAAAAAGACGACTTCTGATTTATCTAAGAGGCCTCAAGGACTAACCATCAAGC
CCAGCATTCTGGGCTTTGACACTCTCACTATTGGCTTTGTGATAATCGTTGTGTGCTTGAAGACCC
CAACAATAAGAGCAACTGGAATGTGTTAGGGAGTGTGGAACAAGGGCAGCCAGTGTGGTGTCTGGA
GTGCATCATAAATGAACTCTGAACTTTGAAAACCTGAATCCTTCAGGAAAGAGTTTGGTGAAGGAAAG
TAGACTAGTTAATGTAGGACCAATGAAATCATCACAGGAGCCACAGTAGGAGACTTCTGGGATGGATT
TGAAGATGTTCCAAATCGTTTGAAAATGAAAAAGAACCAATGGTGTGAAACTTAAGGACTGGCCACCA
GGAGAAGATTTTAGAGATATGATGCCTTCCAGTTTGTGATCTGATGGCCAACATTCCACTGCCCGAGT
ACACAAGGCGAGATGGCAAACCTGAATTTGGCCTTAGGCTGCCAAACTACTTTGTTCCGCCAGATCTGGG
CCCCAAGATGTATAATGCTTATGGATTAATCACTCCTGAAGATCGGAAATATGGAACAACAATCTTAC
TTAGATGTATCTGATGCAGCTAATGTGATGCTATGTGGGAATCCCAAAGGACAGTGTGAGCAAGAAG
AAGAAGTCCTTAAGACCATCAAGATGGAGATTCTGACGAACTACAATAAAGCGATTTATTGAAGGAAA
AGAGAAGCCAGGAGCACTGTGGCACATATGCTGCAAAGGACACGGAGAAGATAAGGGAATTTCTTAAA
AAGGTATCAGAAGAGCAAGGTCAAGAAAACCCAGCAGACCACGATCCTATTCATGATCAAAGCTGGTATT
TAGACCGATCATTAAAGAAACGTCTTCAAGAGTATGGAGTTCAAGGCTGGGCTATTGTACAGTTTCT
TGGGGATGTGGTGTATCCCGGACAGGACTCCACATCAGGTTTCAACTTATATAGCTGCATCAAAGT
GCTGAAGATTTTGTCTCCAGAGCATGTTAAACTGCTTCTGGCTTACTCAGGAATCCGATATCTGT
CACAGACTCATACCAATCACGAAGATAAATTACAGGTGAAGAATGTTATCTACCATGCAGTGAAGATGC
AGTTGCTATGCTGAAAGCCAGTGAATCCAGTTTGGCAAACCT

ACGCGTACGCGGCCGCTCGAGCAGAACTCATCTCAGAAGAGGATCTGGCAGCAATGATATCCTGGATT
ACAAGGATGACGACGATAAGGTTTAA

Protein Sequence: >RC229072 protein sequence
 Red=Cloning site Green=Tags(s)

```
MVLTLGESWPVLVGRFRLSLAADGSDGSHDSWDVERVAEWPWLSGTIRAVSHTDVTKKDLKVCVEFDGE
SWRKRRIEIVYSLLRRAFLVEHNLVLAERKSPEISERIVQWPAITYKPLLDKAGLSITSVRFLGDQQRV
FLSKDLLKPIQDVNSLRSLTDNQIVSKEFQALIVKHLDESHLLKGDKNLVGSEVKIYSLDPSTQWF SAT
VINGNPASKTLQVNCEEIPALKIVDPSLIHVEVVHDNLVTCGNSARIGAVKRKSSENNGTLVSKQAKSCS
EASPMCPVQSVPTTVFKEILLGCTAATPPSKDPRQSTPQAANSPPNLGAKIPQGCHKQSLPEEISSCL
NTKSEALRTKPDVCKAGLLSKSSQIGTGDLKILTEPKGSCTQPKTNTDQENRLESVPQALTGLPKECLPT
KASSKAELIANPPELQKHLEHAPSPSDVSNAPVKAQVNSDSPNNCSGKKEPSALACRSQNLKESVVK
VDNESCCSRSNKIQNAPSRKSVLTDPAKLLKQSGEAFVQDDSCVNIVAQLPKCRECLDSLKDKKEQ
QKDSPVFCRFFHFRRLQFNKHGVLVVEGFLTPNKYDNEAIGLWLPLTKNVVGDLDLDTAKYILANIGDHFC
QMVI SEKEAMSTIEPHRQVAWKRAVKGVREMCVCDTTIFNLHWVCPRCGFGVCVDCYMRKRKNCQQGAA
YKTF SWLKC VKSQIHEPENLMPQIIPGKALYDVGDIVHSVRAKWKIKANCP CSNRQFKLF SKPASKEDL
KQTS LAGEKPTL GAVLQQNPSVLEPAAVGGEAASKPAGSMKPAC PASTSPLNWLADL TSGNVNKENKEKQ
PTMPILKNEIKCLPPLPPLSKSSTVLHTFNSTILTPVSNNSGFLRNLLNSSTGKTENGLKNTPKILDDI
FASLVQNKTTSDL SKRPQGLTIKPSILGFDTPHYWLCDNRLCLQDPNNSNWNV FRECWKQGPVMVSG
VHHKLNSELWKPEFRKEFGEQEVLDVNCRTNEIITGATVGDVDFWDFEDVPNRLKNEKPMVLLKDWPP
GEDFRDMMPSRFDDL MANIPLPEYTRRDGKLNLASRLPNYVVRPDLGPKMYNAYGLITPEDRKYGTTNLH
LDVSDAANVMVYVGI PKGQCEQEEV LKTIQDGDSELT IKRFIEGKEKPGALWHIYAAKDEKIREFLK
KVSEEQGQENPADHPI HDQSWYLD RSLRKRLHQEYGVQGWAI VQFLGDVVFIPAGAPHQVHNLYSICKV
AEDFVSPEHVKHCFWL TQEFRYLSQTHTNHEDKLQVKVNIYHAVKDAVAMLKASESSFGPK
```

TRTRPLEQKLISEEDLAANDILDYKDDDDKV

Chromatograms: https://cdn.origene.com/chromatograms/mk6168_b02.zip

Restriction Sites: SgfI-MluI

Cloning Scheme:

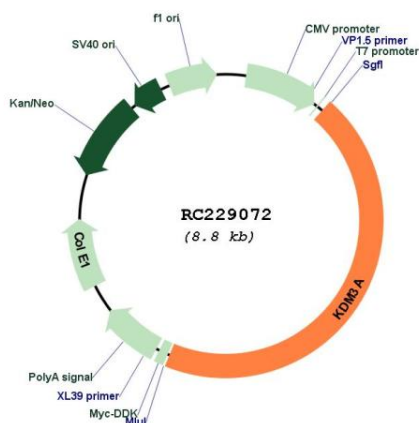


ACCN: NM_001146688

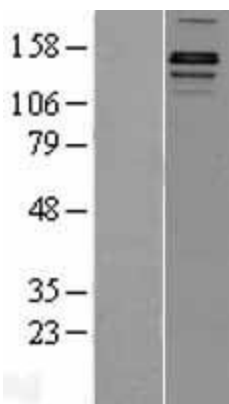
ORF Size: 3963 bp

OTI Disclaimer:	The molecular sequence of this clone aligns with the gene accession number as a point of reference only. However, individual transcript sequences of the same gene can differ through naturally occurring variations (e.g. polymorphisms), each with its own valid existence. This clone is substantially in agreement with the reference, but a complete review of all prevailing variants is recommended prior to use. More info
OTI Annotation:	This clone was engineered to express the complete ORF with an expression tag. Expression varies depending on the nature of the gene.
Components:	The ORF clone is ion-exchange column purified and shipped in a 2D barcoded Matrix tube containing 10ug of transfection-ready, dried plasmid DNA (reconstitute with 100 ul of water).
Reconstitution Method:	<ol style="list-style-type: none">1. Centrifuge at 5,000xg for 5min.2. Carefully open the tube and add 100ul of sterile water to dissolve the DNA.3. Close the tube and incubate for 10 minutes at room temperature.4. Briefly vortex the tube and then do a quick spin (less than 5000xg) to concentrate the liquid at the bottom.5. Store the suspended plasmid at -20°C. The DNA is stable for at least one year from date of shipping when stored at -20°C.
RefSeq:	NM_001146688.1 , NP_001140160.1
RefSeq Size:	4638 bp
RefSeq ORF:	3966 bp
Locus ID:	55818
UniProt ID:	Q9Y4C1
Cytogenetics:	2p11.2
MW:	147.3 kDa
Gene Summary:	This gene encodes a zinc finger protein that contains a jumonji domain and may play a role in hormone-dependent transcriptional activation. Alternative splicing results in multiple transcript variants. [provided by RefSeq, Apr 2009]

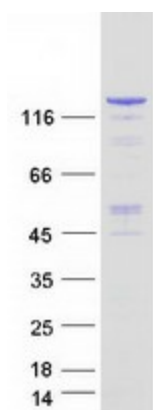
Product images:



Circular map for RC229072



Western blot validation of overexpression lysate (Cat# [LY432099]) using anti-DDK antibody (Cat# [TA50011-100]). Left: Cell lysates from untransfected HEK293T cells; Right: Cell lysates from HEK293T cells transfected with RC229072 using transfection reagent MegaTran 2.0 (Cat# [TT210002]).



Coomassie blue staining of purified KDM3A protein (Cat# [TP329072]). The protein was produced from HEK293T cells transfected with KDM3A cDNA clone (Cat# RC229072) using MegaTran 2.0 (Cat# [TT210002]).