

## Product datasheet for **RC229064**

### Palladin (PALLD) (NM\_001166108) Human Tagged ORF Clone

#### Product data:

Product Type:	Expression Plasmids
Product Name:	Palladin (PALLD) (NM_001166108) Human Tagged ORF Clone
Tag:	Myc-DDK
Symbol:	PALLD
Synonyms:	CGI-151; CGI151; MYN; PNCA1; SIH002
Vector:	pCMV6-Entry (PS100001)
E. coli Selection:	Kanamycin (25 ug/mL)
Cell Selection:	Neomycin
ORF Nucleotide Sequence:	>RC229064 representing NM_001166108 Red=Cloning site Blue=ORF Green=Tags(s)

TTTTGTAATACGACTCACTATAGGGCGCCGGAATTCGTCGACTGGATCCGGTACCGAGGAGATCTGCC  
GCC**CGATCGCC**

ATGTCAGGGACCTCCTCCCATGAGTCTTCTATGACTCCCTCTCAGACATGCAGGAAGAAAGCAAGAATA  
CTGACTTCTTCCCGGCCCTTCTGCTTTCTCAGCCAGGAAGAGATAAACAAGAGTCTTGACCTGGCCCG  
GAGAGCCATAGCCGACTCCGAAACAGAAGATTTTACTCGGAAAAGGAGATCTCGCAGATTTTCAGTACT  
TCTCCTGCAAGCCTCTGTGAACATCCTTCCCATAAGGAGACCAAATTGGGTGAACACGCCTCGAGGAGAC  
CTCAGGATAACAGGTCAACACCTGTCCAGCCTCTGGCAGAGAAAACAACTAAGAGTATCTTTCACCTGT  
TTCAAAGAGGAAACCTGCCATGTCACCCCTGCTCACCAGGCCAGCTACATCCGGAGCCTCCGAAAGGCT  
GAAAAGCGTGGTGCAAAAACCTCCAGCACAAACGTAAAGCCAAAACGCCACATCAAAGAAAGGGTGGCC  
CCCAGAGCCAGCTGTGTGACAAGGCAGCTAATTTAATTGAGGAGCTAACATCCATATTTAAAGCCGCAA  
GCCAAGAAACAGAAGCCCAATGGGGAGTCCCTCGTACCAGACAGTGGGTACCTGTCTCTAAAAATCAG  
CCGTGAGCCCTGCTGAGTGCCTCAGCCAGCCAGAGCCCTATGGAAGACCAAGGGGAGTGGAAAGAGAGG  
TCAAGTCCCCTGGGGCCAGGCATTGCTACCAGGACAACCAGGACTTGGCAGTGCCACACAACCCGAAGTC  
TCACCCACAGCCCAAGCGCCCTCCACTTCCAGCTGCACCTCGATTTCATCCAAAAGCTGAGGAGCCAA  
GAAGTAGCAGAAGGGAGCCGAGTTTATCTGGAGTGTAGAGTCACTGGAAAACCCCACTCCTCGAGTCAGAT  
GGTTCTGTGAAGGAAAGAACTGCACAACACTCCTGATATTCAAATCCACTGTGAGGGAGGGGACCTCCA  
TACCCTGATCATAGCAGAGGCCCTTGGAGCAGACAGGTGCTACACCTGTTGGCTACGAATCCAGC  
GGCTCAGACACAACATCTGCTGAGGTGTTCAATGAAGGTGCCAGTTCAACAGATTCTGACAGTGAAGTT  
TAGCTTTCAAATCAAGAGCTGGAGCTATGCCACAAGCTCAAAGAAAACAACCTTCTGTTTCTTGACAAT  
AGGATCATCATCTCAAAGACAGGGGTGACCACAGCTGTGATTCAACCACTGTCTGTCCCTGTGCAACAG  
GTTACAGTCCAACCTCATATCTCTGCCGACCTGATGGAACCACTACTGCCTACTTTCCTCTGTTTTTA  
CAAAGGAACTGCAAAACACAGCCGTGGCGGAAGGCCAGGTGGTGGTTCTGGAGTGCCGGGTCCGTGGGGC  
ACCCCTCTGAGGTCCAGTGGTTTCGGCAAGGGAGTGAATCCAAGACTCTCCAGATTTCCGAATTCTA  
CAGAAAAACCTAGATCTACAGCTGAACCTGAGGAGATTTGCACCTAGTTATCGCTGAGACTTTCCTGT



[View online >](#)

AAGATGCAGGGATCTTTACATGTTTCAGCAAGAAATGATTATGGATCAGCAACCAGCACTGCCAGCTGGT  
 TGTACCTCAGCCAACACTGAAAACGTAGTTACGAGTCAATGGGAGAATCCAACAATGACCACTCCAA  
 CACTTTCCACCTCCCCTCCAATCTTGGAGACAAGTTCCTTGGAGTTGGCTTCAAAGAAACCATCTGAGA  
 TCCAGCAGGTGAACAACCTGAGTTAGGCTGAGCAGGGCAGCCCTTCAAATGCAATTCAATGCTGCTGA  
 GAGGAAACGAACGGAGTCCATCCCAGCCGTGGAGTAAATGGACTGATTAACGGCAAAGCTAACAGTAAT  
 AAATCTCTTCAAACACCAGCTGCTCTGCTTACCACCTAAGGAGCCACCACCTGCTGTGCCAAACCAA  
 AACTAGGATTTCAAAGAAGGCCAGTGAACACTGCTAGAATAGCCTCCGATGAGGAAATCAAGGCACAAA  
 GGATGCTGTTATTCAAGACCTGGAACGAAAACCTCGCTTCAAGGAGGACCTCTGAACAATGGCCAGCCG  
 AGGTTAACATACGAAGAAGAATGGCTCGTCTGACTGCTAGGTGCTGACAGTGCAACTGTCTTTAATATTC  
 AGGAGCCAGAAGAGGAAACAGCTAATCAGGACATTGGTTCTCCTCATGCTTCTGTAGGGAGTCTCTGGA  
 TGGTCAAAGGAATACAAAGTCTCCAGCTGTGAACAGAGACTCATCAGTAAAATAGAGTACAGGCTAGAA  
 AGGTCTCTGTGGATGAATCAGGTGATGAAGTTCAGTATGGAGATGTGCCTGTGAAAAATGGAATGGCAC  
 CATTCTTTGAGATGAAGCTGAAACATTACAAGATCTTTGAGGGAATGCCAGTAACTTTCACATGTAGAGT  
 GGCTGAAATCAAAGCCAAAGATCTATTGGTTTAAAGATGGGAAGCAGATCTCTCAAAGAGTGATCAC  
 TACACCATTCAAAGAGATCTCGATGGGACCTGCTCCCTCCATACCACAGCCTCCACCCTAGATGATGATG  
 GGAATTATACAATTATGGCTGCAAAACCTCAGGGCCGCATCAGTTGTACTGGACGGCTAATGGTACAGGC  
 TGTCAAACCAAAGAGGTCGAAGTCCCCTGCTCCCTCAGGCCATCCTCATGTGAGAAGGCCTCGTTCTAGA  
 TCAAGGGACAGTGGAGACGAAAAATGAACCAATTCAGGAGCGATTCTTTCAGACCTCACTTCTTGCAGGCTC  
 CTGGAGATCTGACTGTTCAAGAAGGAAAACCTGCGAATGGACTGCAAAGTCAAGTGGGTTACCAACCCC  
 AGATCTAAGCTGGCAACTAGATGAAAAGCCCGTACGCCCTGACAGTGTCTACAAGATGCTGGTGCCTGAG  
 AACGGGTGCACTCTCTGATCATAGAGCCAGTACGTACGTGATGCCGGCATCTACACATGTATAGCTA  
 CCAACCGAGCAGGACAGAACTCATTAGCCTGGAGCTTGTGGTTGCTGCTAAAGAAGCACAAAACCCCC  
 TGTGTTTATTGAGAAGCTCCAAAACACAGGAGTTGCTGATGGGTACCCAGTCCGGTGGAAATGTCGTGTA  
 TTGGGATGCCACCACCTCAGATATTTTGAAGAAGAAAATGAATCACTCACTACAGCACTGACCCGAG  
 TGAGCATGCACCAGGACAACCACGGCTACATCTGCCTGCTCATTAGGGAGCCACAAAAGAAGATGCTGG  
 GTGGTACTGTGTCAGCCAAGAATGAAGCAGGGATTGTGTCCTGTACTGCCAGGCTGGACGTTTACATT  
 TCTCGACAT

ACGCGTACGCGGCCGCTCGAGCAGAAACTCATCTCAGAAGAGGATCTGGCAGCAAATGATATCCTGGATT  
 ACAAGGATGACGACGATAAGGTTTAA

**Protein Sequence:**

>RC229064 representing NM\_001166108  
 Red=Cloning site Green=Tags(s)

MSGTSSHESFYDSLSDMQEESKNTDFPGLSAFLSQEEINKSLDLARRAIADSETEDFDSEKEISQIFST  
 SPASLCEPHSHKETKLGEHASRRPQDNRSTPVQPLAEKQTKSISSPVSKRKPAMSPLLTRPSYIRSLRKA  
 EKRGAKTPSTNVKPKTPHQKGGPQSQLCDKAANLIEELTSIFKAAKPRNRSPNGESSSPDSGYLSPKNQ  
 PSALLSASASQSPMEDQGEMEREVKSPGARHCYQDNQDLAVPHNRKSHQPFSALHFPAAPRFIQKLRISQ  
 EVAEGSRVYLECRVTGNPTPRVRFCEGKELHNTPIQIHCEGGDLHTLIIEAFEDDTGRYTCLATNPS  
 GSDTTSAEVFI EGASSTDSSESLAFKSRAGAMPQAQKKTTSVSLTIGSSPKTGVTTAVIQPLSVPVQQ  
 VHSPTSYLCRPDGTTTAYFPPVFTKELQNTAVAEGQVVVLECRVRGAPPLQVQWFRQGEIQDSPDFRIL  
 QKKPRSTAEPEEICTLVIAETFPEDAGIFTCSARNDYGSATSTAQLVVTANTENCESYEMGESNNDHFQ  
 HFPPPPPILETSLELASKKPEIQQVNNPELGLSRAALQMVFNAARETNGVHPSRQVNGLINGKANSN  
 KSLPTPAVLLSPTKEPPPLLAKPKLGFPPKASRTARIASDEEIQGTKDAVIQDLERKLRFKEDLLNNGQP  
 RLTYEERMARRLLGADSATVFNIQEPEEETANQDIGSPHASVGSPLDGQKEYKVSCEQRLISEIEYRLE  
 RSPVDESQVYGDVPEVNGMAPFFEMKLGKHYKIFEGMPVFTFCRVAGNPKPKIYWFKDKGQISPKSDH  
 YTIQRDLDTCSLHTTASTLDDGNYYTMAANPQGRISCTGRLMVQAVNQRRSPRSPSGHPHVRPRSR  
 SRDSDGENEPIQERFFRPHFLQAPGDLTVQEGKLCRMDCKVSGLPTPDL SWQLDGKPVPRDPAHKMLVRE  
 NGVHSLIIEPVTSRDAGIYTCIATNRAGQNSFSLELVVAAKEAHKPPVFIEKLQNTGVADGYPVRLVRECRV  
 LGVPPPQIFWKENESLTHSTDRVSMHQDNHGYICLLIQGATKEDAGWYTVSAKNEAGIVSCTARLDVYI  
 SRH

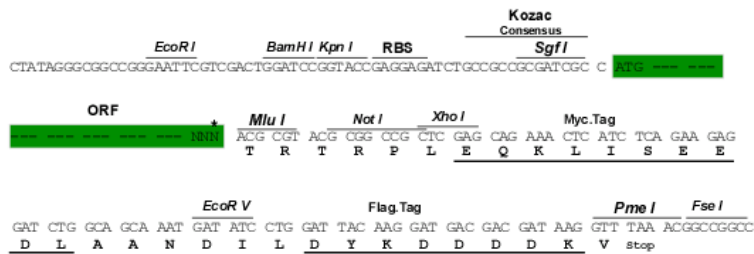
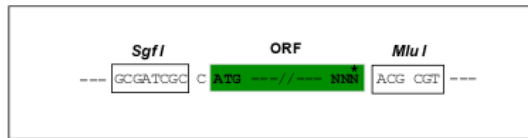
TRTRPLEQKLI SEEDLAANDILDYKDDDDKV

Restriction Sites:

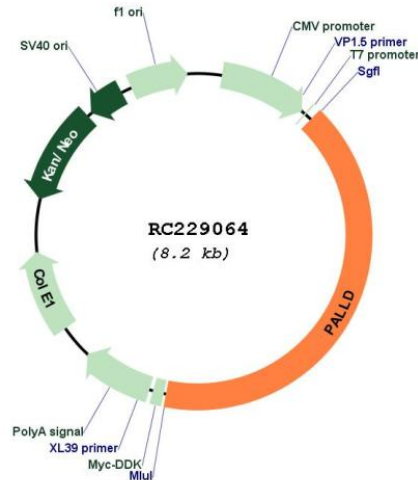
SgfI-MluI

Cloning Scheme:

Cloning sites used for ORF Shuttling:



\* The last codon before the Stop codon of the ORF

**Plasmid Map:**


**ACCN:** NM\_001166108

**ORF Size:** 3369 bp

**OTI Disclaimer:** The molecular sequence of this clone aligns with the gene accession number as a point of reference only. However, individual transcript sequences of the same gene can differ through naturally occurring variations (e.g. polymorphisms), each with its own valid existence. This clone is substantially in agreement with the reference, but a complete review of all prevailing variants is recommended prior to use. [More info](#)

**OTI Annotation:** This clone was engineered to express the complete ORF with an expression tag. Expression varies depending on the nature of the gene.

**Components:** The ORF clone is ion-exchange column purified and shipped in a 2D barcoded Matrix tube containing 10ug of transfection-ready, dried plasmid DNA (reconstitute with 100 ul of water).

**Reconstitution Method:**

1. Centrifuge at 5,000xg for 5min.
2. Carefully open the tube and add 100ul of sterile water to dissolve the DNA.
3. Close the tube and incubate for 10 minutes at room temperature.
4. Briefly vortex the tube and then do a quick spin (less than 5000xg) to concentrate the liquid at the bottom.
5. Store the suspended plasmid at -20°C. The DNA is stable for at least one year from date of shipping when stored at -20°C.

**RefSeq:** [NM\\_001166108.2](#)

**RefSeq ORF:** 3372 bp

**Locus ID:** 23022

**UniProt ID:** [Q8WX93](#)

**Cytogenetics:** 4q32.3

**MW:** 123.5 kDa

**Gene Summary:**

This gene encodes a cytoskeletal protein that is required for organizing the actin cytoskeleton. The protein is a component of actin-containing microfilaments, and it is involved in the control of cell shape, adhesion, and contraction. Polymorphisms in this gene are associated with a susceptibility to pancreatic cancer type 1, and also with a risk for myocardial infarction. Alternative splicing results in multiple transcript variants. [provided by RefSeq, Oct 2009]