

Product datasheet for RC229055

Myocardin (MYOCD) (NM_001146312) Human Tagged ORF Clone

Product data:

Product Type: Expression Plasmids
Product Name: Myocardin (MYOCD) (NM_001146312) Human Tagged ORF Clone
Tag: Myc-DDK
Symbol: Myocardin
Synonyms: MGBL; MYCD
Mammalian Cell Selection: Neomycin
Vector: pCMV6-Entry (PS100001)
E. coli Selection: Kanamycin (25 ug/mL)
ORF Nucleotide Sequence: >RC229055 representing NM_001146312
Red=Cloning site Blue=ORF Green=Tags(s)

TTTTGTAATACGACTCACTATAGGGCGGCCGGAATTCGTCGACTGGATCCGGTACCGAGGAGATCTGCC
GCC**CGATCGCC**

ATGACACTCCTGGGGTCTGAGCATTCTTGCTGATTAGGAGCAAGTTCAGATCAGTTTTACAGTTAAGAC
TTCAACAAAGAAGGACCCAGGAACAACCTGGCTAACCAAGGCATAATACCACCACTGAAACGTCCAGCTGA
ATTCCATGAGCAAAGAAAACATTTGGATAGTGACAAGGCTAAAAATCCCTGAAGCGCAAAGCCAGAAAC
AGGTGCAACAGTCCGACTTGGTAAATATGCACATACTCCAAGCTTCCACTGCAGAGAGGTCCATCCAA
CTGCTCAGATGAAGCTGAAAAGAGCCCGACTCGCCGATGATCTCAATGAAAAAATTGCTCTACGACCAGG
GCCACTGGAGCTGGTGGAAAAAACATTCTTCTGTTGATTCTGCTGTGAAAGAGGCCATAAAAGGTAAC
CAGGTGAGTTTCTCCAAATCCACGGATGCTTTTGCCTTTGAAGAGGACAGCAGCAGCGATGGGCTTTCTC
CGGATCAGACTCGAAGTGAAGACCCCCAAAACCTCAGCGGGATCCCCGCCAGACGCTAAAGCCTCAGATAC
CCCTTCGACAGTTCTCTGGGGACAAACCAGGATCTTGCTTCTGGCTCAGAAAAATGACAGAAATGACTCA
GCCTCACAGCCCAGCCACCAGTCAGATGCGGGGAAGCAGGGGCTTGGCCCCCAGCACCCCATAGCCG
TGCATGCTGCTGTAAGTCCAAATCCTTGGGTGACAGTAAGAACCGCCACAAAAAGCCAAAGGACCCCAA
GCCAAAGGTGAAGAAGCTTAAATATCACCAGTACATCCCCCAGACCAGAAGGCAGAGAAGTCCCCTCCA
CCTATGGACTCAGCCTACGCTCGGCTGCTCCAGCAACAGCAGCTGTTCTGCAGTCCAAATCCTCAGCC
AGCAGCAGCAGCAGCAGCAACACCGTTTACGCTACCTAGGGATGCACCAAGCTCAGCTTAAGGAACCAAA
TGAACAGATGGTCAGAAATCCAACTCTTCTTCAACGCCACTGAGCAATACCCCTTGTCTCCTGTCAAA
AACAGTTTTTCTGGACAACTGGTGTCTCTTTCAAACCAGGCCCACTCCACCTAACCTGGATGATC
TGAAGGTCTCTGAATTAAGACAACAGCTTGAATTCGGGGCTTGCTGTGTGAGCAGCAAAAACGGCTCT
CATGGACCGGCTTCGACCCTCCAGGACTGCTCTGGCAACCCAGTGCCGAACTTTGGGGATATAACGACT
GTCACCTTTCTGTCACACCCAACAGCTGCCCAATTACCAGTCTTCTCTTCTACCAGTGCCCTGTCCA
ACGGCTTCTACCCTTTGGCAGCACCAGCTCCAGCCCCCGATCTCCCCAGCCTCCTCTGACCTGTCAGT
CGCTGGTCCCTGCCGGACACTTCAATGATGCCTCCCCCTCCTCGGCCTGCACCCGTCGCCAGTCCAC



GTGTGCACGGAGGAAAGTCTCATGAGCAGCCTGAATGGGGGCTCTGTTCCCTTCTGAGCTGGATGGGCTGG
 ACTCCGAGAAGGACAAGATGCTGGTGGAGAAGCAGAAGGTGATCAATGAACTCACCTGAAAACCTCCAGCA
 AGAGCAGAGGCAGGTGGAGGAGCTGAGGATGCAGCTTCAGAAGCAGAAAAGGAATAACTGTTTCAGAGAAG
 AAGCCGCTGCCTTTCTGGCTGCCTCCATCAAGCAGGAAGAGGCTGTCTCCAGCTGTCTTTTGCATCCC
 AAGTACCTGTGAAAAGACAAAGCAGCAGCTCAGAGTGTCAACCCACCGGCTGTGAAGCTGCTCAACTCCA
 GCCTCTTGAAAATGCTCATTGTGTGGAGTCTCAGATCAAACCAATGTACTTTCTCCACATTTCTCAGC
 CCCCAGTGTCCCCTCAGCATTACCCGCTGGGGGCTGTGAAAAGGCCACAGCACATCAGTTGCCCCAT
 CACCCAACAACCCCTCACTTTCTGCCCTCATCTCCGGGGCCAGGGAGAAGGGCACAGGGTCTCCTCGCC
 CATCAGCAGCCAGGTGTGCACTGCACAGAAGTCAAGGAGCACACGATGGCCATCCTCCAAGCTTCTCTCCC
 CATTCTTCCAGCCTCCACCCGCCCTTCTCTGGAGCCCAAGCAGACAGCAGTATGGTGCCGGGGGAAACC
 CTTGTCCAAAAGCCATGTGTACAGCAAAAGATGGCTGGTTTACTCTTCTGATAAGGTGGGGCCAAA
 GTTTTCAATTCCATCCCAACTTTTTCTAAGTCAAGTTCAGCAATTTAGAGGTAACACAGCCTCCATCC
 TATGAAGATGCCGTAAGCAGCAATGACCCGGAGTCAAGCAGATGGATGAACTCCTGGACGTGCTTATTG
 AAAGCGGAGAAAAGCAGCAGCTAGAGAGGATCACTCATGTCTTCAAAAAGTCCCAAAGATACCCAG
 ATCTTCCGAAGTCCAAGTCTGCTCCTCAACAAGCCCTCGGCTTCTTTGAACAAGCCTTTCAGGCAGC
 CAGATCCCTTTGATCCCTATGCCACCGACAGTATGAGCATCTTGAAGTCTTATAAATCCCAGAGCC
 CCCTAGGAAAGATGAGTATGTCACCTTCTAAAAATTGGGAGCGAAGAGCCTCACTTTGATGGGATAAT
 GGATGGATTCTCTGGGAAGGCTGCAAGAACCTTCAATGCACATGAGATCTTCCAGGCCCCCTCTCT
 CCAATGCAGACACAGTTTTACCCCTCTTCTGTGGACAGCAATGGGCTGCAGTTAAGCTTCACTGAATCTC
 CCTGGGAAACCATGGAGTGGCTGGACCTCACTCCGCAAAATCCACACCAGGCTTTAGCGCCCTCACCAC
 CAGCAGCCCCAGCATCTCAACATCGATTTCTGGATGTCAGTATCTCAATTTGAATTTCCATGGAC
 CTCCTTGCAGCAGTGG

ACGCGTACGCGGCGCTCGAGCAGAACTCATCTCAGAAGAGGATCTGGCAGCAAATGATATCCTGGATT
 ACAAGGATGACGACGATAGGTTTAA

Protein Sequence:

>RC229055 representing NM_001146312
 Red=Cloning site Green=Tags(s)

MTLLGSEHSLLRKFRSVLQLRLQQRRTQEQLANQGIIPPLKRPAEFHEQRKHLSDKAKNSLKRKARN
 RCNSADLVNMIHQASTAERSIPTAQMKLKRARLADDLNEKIALRPGPLELVEKNILPVDSAVKEAIKGN
 QVSFSKSTDAFAFEEDSSDGLSPDQTRSEDPQNSAGSPPDAKASDTPSTGSLGTNQDLASGSENRNDS
 ASQPSHQSDAGKQGLGPPSTPIAVHAAVKSKSLGDSKNRHKKPKDPKPKVKLKYHQYIPPDQKAESPP
 PMDSAYARLLQQQLFLQLQILSQQQQQQHRFSYLGMHQAQLKEPNEQMVNRPNSSSTPLSNTPLSPVK
 NSFSGQTVSSFKPGPLPPNDDLKVSSELRQQLRIRGLPVSGTKTALMDRLRPFQDCSGNPVVPNGDIT
 VTFPVTNPLPNYQSSSSTALSNGFYHFGSTSSPPISSPSSDLVAGSLPDTFNDASPSFGLHPSVH
 VCTEESLMSSLNGGVPSEL DGLDSEKDKMLVEKQVINELTWKLQEQRQVEELRMLQKQKRNNCSEK
 KPLPFLAASIKQEEAVSSCFASQVPVKRQSSSSECHPPACEAAQLQPLGNAHCVESSDQTNVLSSTFLS
 PQCSPQHSPLGAVKSPQHISLPPSPNPHFLPSSSGAQGEGHRVSSPISQVCTAQNSGAHDGHPSPSP
 HSSSLHPPFSGAQADSSHGAGNCPKSPCVQKQKMAGLHSSDKVGPKFSIPSPTFSSSSAISEVQPPS
 YEDAVKQMQMTRSQMDELLDVLIESGEMPADAREDHSLQKVPKIPRSSRSPTAVLTKPASFEQASSGS
 QIPFDPYATDSDEHLEVLNLSQSPGKMSDVTLLKIGSEEPHFDGIMDFSGKAAEDLFAHEILPGPLS
 PMQTQFSPSSVDSNGLQLSFTESPWETMEWLDLTPPNSTPGFSALTTSSPSIFNIDFLDVTDLNLSMMD
 LHLQQW

TRTRPLEQKLISEEDLAANDILDYKDDDDKV

Chromatograms:

https://cdn.origene.com/chromatograms/mg4988_a06.zip

Restriction Sites:

Sgfl-Mlul

Cloning Scheme:



ACCN: NM_001146312

ORF Size: 2958 bp

OTI Disclaimer: Due to the inherent nature of this plasmid, standard methods to replicate additional amounts of DNA in E. coli are highly likely to result in mutations and/or rearrangements. Therefore, OriGene does not guarantee the capability to replicate this plasmid DNA. Additional amounts of DNA can be purchased from OriGene with batch-specific, full-sequence verification at a reduced cost. Please contact our customer care team at custsupport@origene.com or by calling 301.340.3188 option 3 for pricing and delivery.

The molecular sequence of this clone aligns with the gene accession number as a point of reference only. However, individual transcript sequences of the same gene can differ through naturally occurring variations (e.g. polymorphisms), each with its own valid existence. This clone is substantially in agreement with the reference, but a complete review of all prevailing variants is recommended prior to use. [More info](#)

OTI Annotation: This clone was engineered to express the complete ORF with an expression tag. Expression varies depending on the nature of the gene.

Components: The ORF clone is ion-exchange column purified and shipped in a 2D barcoded Matrix tube containing 10ug of transfection-ready, dried plasmid DNA (reconstitute with 100 ul of water).

Reconstitution Method:

1. Centrifuge at 5,000xg for 5min.
2. Carefully open the tube and add 100ul of sterile water to dissolve the DNA.
3. Close the tube and incubate for 10 minutes at room temperature.
4. Briefly vortex the tube and then do a quick spin (less than 5000xg) to concentrate the liquid at the bottom.
5. Store the suspended plasmid at -20°C. The DNA is stable for at least one year from date of shipping when stored at -20°C.

Note: Plasmids are not sterile. For experiments where strict sterility is required, filtration with 0.22um filter is required.

RefSeq: [NM_001146312.3](#)

RefSeq ORF: 2961 bp

Locus ID: 93649

UniProt ID: [Q8IZQ8](#)

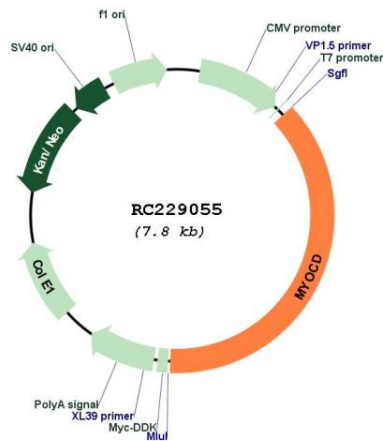
Cytogenetics: 17p12

Protein Families: Transcription Factors

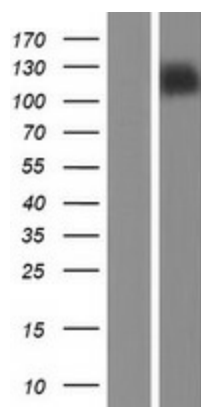
MW: 106.6 kDa

Gene Summary: This gene encodes a nuclear protein, which is expressed in heart, aorta, and in smooth muscle cell-containing tissues. It functions as a transcriptional co-activator of serum response factor (SRF) and modulates expression of cardiac and smooth muscle-specific SRF-target genes, and thus may play a crucial role in cardiogenesis and differentiation of the smooth muscle cell lineage. Alternatively spliced transcript variants encoding different isoforms have been found for this gene.[provided by RefSeq, Sep 2009]

Product images:



Circular map for RC229055



Western blot validation of overexpression lysate (Cat# [LY432082]) using anti-DDK antibody (Cat# [TA50011-100]). Left: Cell lysates from untransfected HEK293T cells; Right: Cell lysates from HEK293T cells transfected with RC229055 using transfection reagent MegaTran 2.0 (Cat# [TT210002]).