

Product datasheet for **RC229002**

SETDB2 (NM_001160308) Human Tagged ORF Clone

Product data:

Product Type:	Expression Plasmids
Product Name:	SETDB2 (NM_001160308) Human Tagged ORF Clone
Tag:	Myc-DDK
Symbol:	SETDB2
Synonyms:	C13orf4; CLLD8; CLLL8; KMT1F
Mammalian Cell Selection:	Neomycin
Vector:	pCMV6-Entry (PS100001)
E. coli Selection:	Kanamycin (25 ug/mL)



[View online »](#)

ORF Nucleotide
Sequence:

>RC229002 representing NM_001160308
Red=Cloning site Blue=ORF Green=Tags(s)

TTTTGTAATACGACTCACTATAGGGCGGCCGGAATTCGTCGACTGGATCCGGTACCGAGGAGATCTGCC
GCC**CGCATCGCC**

ATGGGAGAAAAAATGGCGATGCAAAAACCTTTCTGGATGGAGCTAGAAGATGATGAAAAAGTGGACTTCA
TTTTTGAACAAGTACAAAATGTGCTGCAGTCACTGAAACAAAAGATCAAAGATGGGTCTGCCACCAATAA
AGAATACATCCAAGCAATGATTCTAGTGAATGAAGCAACTATAATTAACAGTTCAACATCAATAAAGGAT
CCTATGCCTGTGACTCAGAAGGAACAGGAAAAACAATCCAATGCATTTCCCTCTACATCATGTGAAAAC
CCTTTCCAGAAGACTGTACATTTCTAACACAGGAAATAAGGAAATTCCTCTCTTGAAGATAAAGTTGT
AGACTTTAGAGAAAAAGACTCATCTTCGAATTTATCTTACCAAAGTCATGACTGCTCTGGTGCTTGTCTG
ATGAAAATGCCACTGAACCTGAAGGGAGAAAACCTCTGCAGCTGCCAATCAAATGTCACCTCCAAAGAC
GACATGCAAAGACAAAACCTCATTCTTCAGCACTCCACGTGAGTTATAAAACCCCTGTGGAAGGAGTCT
ACGAAACGTGGAGGAAGTTTTTCGTTACCTGCTTGAGACAGAGTGAACTTTTTATTACAGATAACTTT
TCTTTCAATACCTATGTTCAAGTTGGCTCGGAATACCCAAAGCAAAAAGAAGTTGTTTCTGATGTGGATA
TTAGCAATGGAGTGAATCAGTGCCATTTCTTCTGTAATGAAATGACAGTAGAAAGCTCCACAGTT
TAAGTACAGAAAGACTGTGTGGCCTCGAGCATATAATCTAACCAACTTTCCAGCATGTTTACTGATTCC
TGTGACTGCTCTGAGGGCTGCATAGACATAACAAAATGTGCATGTCTTCAACTGACAGCAAGGAATGCCA
AAACTTCCCCCTGTCAAGTGACAAAATAACCACTGGATATAATATAAAAGACTACAGAGACAGATTCC
TACTGGCATTATGAATGCAGCCTTTTGTGCAATGTAATCGACAATTGTGTCAAACCGAGTTGTCCAA
CATGGTCTCAAGTGAGGTTACAGGTGTTCAAACTGAGCAGAAGGGATGGGGTGTACGCTGTCTAGATG
ACATTGACAGAGGGACATTTGTTTGCATTTATTCAGGAAGATTACTAAGCAGAGCTAACACTGCAAAAA
TTATGGTATTGATGAAAACGGGAGAGATGAGAATACTATGAAAAATATATTTTCAAAAAAGAGAAATTA
GAAGTTGCATGTTCAAGTTGTGAAGTTGAAGTTCTCCATTAGGATTGGAACACATCCTAGAAGTCTA
AAACTGAGAAATGTCCACCAAAGTTCAGTAATAATCCCAAGGAGCTTACTATGGAACGAAATATGATAA
TATTTCAAGAATTCAGTATCATTCAAGTTATTAGAGATCCTGAATCCAAGACAGCCATTTTCAACACAAT
GGGAAAAAATGGAAATTTGTTTCTCGGAGTCTGTCACCTCAGAAAGATAATGATGGATTTAAACCACCC
GAGAGCATCTGAACCTAAAACCAAGGGAGCAGAAAAGGACTCAAGTTCAAACCATGTTGATGAGTTTGA
AGATAATCTGCTGATTGAATCAGATGTGATAGATAAATAAATAAGAGAAGAACTCCACCAAGGAGC
AGATGTAACCAGGCGACCACATTGGATAATCAGAATATTAAGAAAGCAATTGAGGTTCAAATTCAGAAAC
CCCAAGAGGGACGATCTACAGCATGTCAAAGACAGCAGGTATTTGTGATGAAGAGTTGCTAAGTGAAC
CAAGAATACTTCACTGATTCTTAACAAAGTTCAATAAAGGGAATGTGTTTTTATTGGATGCCACAAAA
GAAGGAAATGTCGGCCGCTTCTTAATCATAGTTGTTGCCAAATCTCTTGGTACAGAAATGTTTTGTAG
AAACACACAACAGGAATTTCCATTGGTGGCATTCTTCAACACAGGTATGTGAAAGCAAGAACAGAGCT
AACATGGGATTATGGCTATGAAGCTGGGACTGTGCCTGAGAAGGAAATCTTCTGCCAATGTGGGGTTAAT
AAATGTAGAAAAAATATTA

ACGCGTACGCGGCCGCTCGAGCAGAACTCATCTCAGAAGAGGATCTGGCAGCAAATGATATCCTGGATT
ACAAGGATGACGACGATAAGGTTTAA

Protein Sequence: >RC229002 representing NM_001160308
Red=Cloning site Green=Tags(s)

MGEKNGDAKTFWMELEDDGKVDVIFEVQVNLQSLKQKIKDGSATNKEYIQAMILVNEATIINSSTSISKD
PMPVTQKEQENKSNAPSTSCENSFPEDCTFLTGTGNKEILSLEDKVVDFREKDSNNLSYQSHDCSGACL
MKMPLNLKGENPLQLPIKCHFQRRHAKTNSHSSALHVSYKTPCGRSLRNVEEVFRYLLETETCNFLFTDNF
SFNTYVQLARNYPKQKEVVSVDVDSNGVESVPI SFCNEIDSRKLPQFKYRKTVPWPAYNL TNFSSMFTDS
CDCSEGCIDITKCAQLTARNAKT SPLSSDKITTGKYKRLQRQIPTGIYECSSLCKCNRQLCQNRVVQ
HGPQVRLQVFKTEQKGWVVRCLDDIDRGTFCIYSGRLLSRANTEKSYGIDENGRDENTMKNIFSKRKL
EVACSDCEVEVLPLGLETHPRTAKTEKCPPKFSNNPKELTMETKYDNISRIQYHSVIRDPEKTAIFQHN
GKKMEFVSSVTPEDNDGFKPPREHLNSKTKGAQKSSNHVDEFEDNLLIESDVIDITKYREETPPRS
RCNQATLTDNQNIKKAIEVQIQKPQEGRSTACQRQVFCDEELLSETKNTSSDSLTKFNKGNVFLLDATK
EGNVGRFLNHSCCPNLLVQNVFVETHNRNFPLVAFFTNRYVKARTELTDWYGYEAGTVPEKEIFCQCGVN
KCRKKIL

TRTRPLEQKLI SEEDLAANDILDYKDDDDKV

Chromatograms: https://cdn.origene.com/chromatograms/mg3781_f05.zip

Restriction Sites: SgfI-MluI

Cloning Scheme:

Cloning sites used for ORF Shuttling:



* The last codon before the Stop codon of the ORF

ACCN: NM_001160308

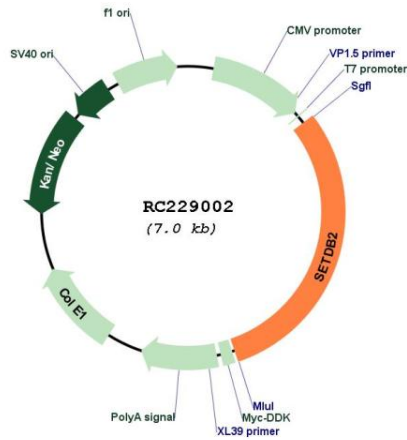
ORF Size: 2121 bp

OTI Disclaimer: The molecular sequence of this clone aligns with the gene accession number as a point of reference only. However, individual transcript sequences of the same gene can differ through naturally occurring variations (e.g. polymorphisms), each with its own valid existence. This clone is substantially in agreement with the reference, but a complete review of all prevailing variants is recommended prior to use. [More info](#)

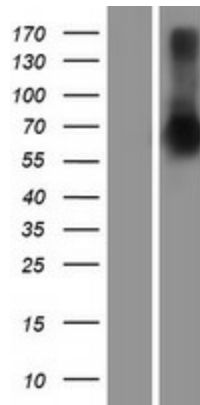
OTI Annotation: This clone was engineered to express the complete ORF with an expression tag. Expression varies depending on the nature of the gene.

Components:	The ORF clone is ion-exchange column purified and shipped in a 2D barcoded Matrix tube containing 10ug of transfection-ready, dried plasmid DNA (reconstitute with 100 ul of water).
Reconstitution Method:	<ol style="list-style-type: none">1. Centrifuge at 5,000xg for 5min.2. Carefully open the tube and add 100ul of sterile water to dissolve the DNA.3. Close the tube and incubate for 10 minutes at room temperature.4. Briefly vortex the tube and then do a quick spin (less than 5000xg) to concentrate the liquid at the bottom.5. Store the suspended plasmid at -20°C. The DNA is stable for at least one year from date of shipping when stored at -20°C.
RefSeq:	<u>NM_001160308.3</u>
RefSeq ORF:	2124 bp
Locus ID:	83852
UniProt ID:	<u>Q96T68</u>
Cytogenetics:	13q14.2
Protein Families:	Druggable Genome
Protein Pathways:	Lysine degradation
MW:	80.5 kDa
Gene Summary:	This gene encodes a member of a family of proteins that contain a methyl-CpG-binding domain (MBD) and a SET domain and function as histone methyltransferases. This protein is recruited to heterochromatin and plays a role in the regulation of chromosome segregation. This region is commonly deleted in chronic lymphocytic leukemia. Naturally-occurring readthrough transcription occurs from this gene to the downstream PHF11 (PHD finger protein 11) gene. Alternative splicing results in multiple transcript variants. [provided by RefSeq, Mar 2016]

Product images:



Circular map for RC229002



Western blot validation of overexpression lysate (Cat# [LY432029]) using anti-DDK antibody (Cat# [TA50011-100]). Left: Cell lysates from untransfected HEK293T cells; Right: Cell lysates from HEK293T cells transfected with RC229002 using transfection reagent MegaTran 2.0 (Cat# [TT210002]).