

Product datasheet for **RC228978**

JPH4 (NM_001146028) Human Tagged ORF Clone

Product data:

Product Type:	Expression Plasmids
Product Name:	JPH4 (NM_001146028) Human Tagged ORF Clone
Tag:	Myc-DDK
Symbol:	JPH4
Synonyms:	JP4; JPHL1
Mammalian Cell Selection:	Neomycin
Vector:	pCMV6-Entry (PS100001)
E. coli Selection:	Kanamycin (25 ug/mL)



[View online »](#)

ORF Nucleotide Sequence:

>RC228978 representing NM_001146028
 Red=Cloning site Blue=ORF Green=Tags(s)

TTTTGTAATACGACTCACTATAGGGCGGCCGGGAATTCGTCGACTGGATCCGGTACCGAGGAGATCTGCC
 GCC**CGGATCGCC**

ATGTCCTCCCGGGGCAAGTTCGACTTTGACGACGGGGCTGCTACGTGGGGGCTGGGAGCGGGGCGGG
 CACATGGCTACGGCGTGTGCACGGGCCCGGGCCAGGGCGAGTACAGCGGCTGCTGGGCACACGGCTT
 CGAGTCACTGGGCGTCTTACGGGGCCCGGGACACAGCTACCAGGGCCACTGGCAGCAGGGCAAGCGC
 GAAGGGCTGGGCGTGGAGCGCAAGAGCCGCTGGACGTACCGCGCGAGTGGCTGGGCGGGCTGAAGGGG
 GCAGCGGCGTGTGGAAAGCGTGTCCGGCTGCGCTACGCCGGGCTTGGAAAGGACGTTTCCAGGACGG
 CTACGGCACTGAGACCTACTCCGACGGAGGCACCTACCAGGGCCAGTGGCAGGCCGGGAAGCGCCACGGC
 TACGGGTACGCCAGAGTGTCCCTACCATCAGGCGGCGTGTGCGCTCGCCCCCGGCACCTCCCTGG
 ATTCGGCCACAGCGACCCCGGACGCCACCCCGCCCTGCCCTTGGCGGGGACGAGGGAGGCAGCCC
 CGCTCGGGCTCCCGGGCGGCTTCGTGTGGCCGGGCCGGGGACGCCAGCGGCGCTGTCCGAAAG
 CGCACTCCAGCGGCCGGGATTCTTTCGCCGTTGCTGTGCTCAGCGGGCTCCGAGCGGGCGGAGCTC
 GCAGCTCCCTGGGAGCAAGCGAGGCTCCCTGCGCAGCGAGGTGAGCAGCGAGGTGGGCAGCACCGGACC
 GCCCGGCTCGGAGGCCAGCGGGCCCCGGCCGACGCGCCGCCCGCCCTCATCGAGGGCTCGGCCACAGAG
 GTGTACGCGGGCGAGTGGCGCGCAGATCGGCGCAGCGGCTTCGGCGTCAGCCAGCGCTCCAACGGGCTG
 GCTACGAGGGCGAGTGGTGGGCAACAGCGGCACGGCTACGGGCGCACCCCGCCCGGACGGCTCCCG
 CGAGGAGGGCAAGTACAAGCGCAACCGGCTGGTGCACGGCGGGCGGTCGCGAGTCTCCTGCCTGTGGC
 CCGCTCAGCGCCAGGAGATCGCCGCTGCCAGGGCAGCAGACGCCCTCCTAAAGGCAGTGGCAGCCGTC
 GTGCTGCTGAGAAGCCGTGGAGGACGCTCGAATGGCCAACTGATAGCCAGGACCTGCAGCCCATGCTA
 GAGGCCCGAGGCCGAGCCAGGCAGGACTCAGAAGTTCCGACACGGAGCCCTGGATGAGGACAGCC
 CTGGGGTATATGAGAACGGACTGACCCCTCAGAGGGATCCCCTGAACTGCCAGCAGTCTGCCTCCTC
 CCGCCAACTCGGCGACCCCTGCCTGCCGAGCCACTGCCTCCTGGAGGGGACCAGGGTCCCTTCTCC
 AGCCCCAAAGCTTGGCTGAGGAGTGGGGGGGGCAGGCGCACAGGCAGAGGAAGTACTGGCTATGAGG
 CTGAGGATGAGGCTGGGATGCAAGGGCCAGGGCCAGAGCGGTTCCCACTCCTCGGAGGCTGCAGCGA
 CAGTTCAGGAAGTCTTCAGAGGAGGAGGGGAGGATGAAGAGCCCTGCCCGGCTGAGGGCCCCAGCA
 GGCACGGAGCCTGAGCCATCGCCATGCTGGTCTGAGGGGCTGCTCCTCGAGGGGTGATGATGCTGGT
 GCCTGACAGAAGAGCTCGGGGAGCCGCTGCAACCGAGAGGCCTGCCAGCCGGGAGCTGCCAACCCCT
 GGTGGTGGGAGCCGTGGCCCTCCTGGACCTCAGCCTGGCATTCTGTTCTCCAGCTCCTCAC

ACGCGTACGCGGCCGCTCGAGCAGAACTCATCTCAGAAGAGGATCTGGCAGCAAATGATATCCTGGATT
 ACAAGGATGACGACGATAAGGTTTAA

Protein Sequence:

>RC228978 representing NM_001146028
 Red=Cloning site Green=Tags(s)

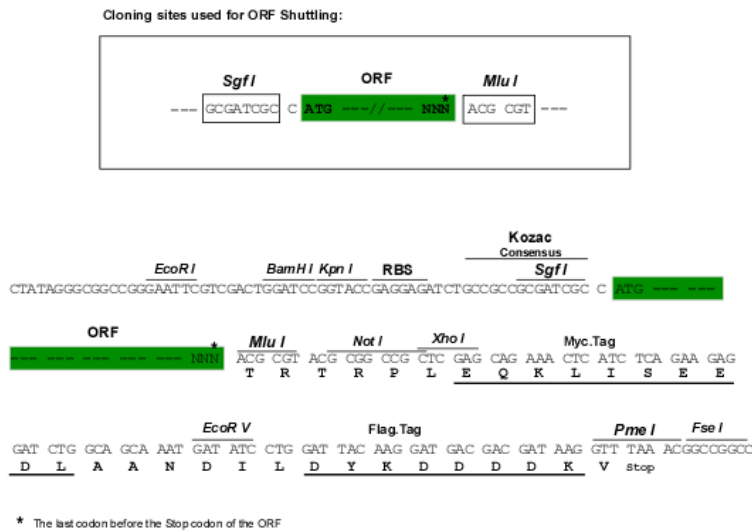
MSPGGKFDFFDDGGCYVGGWEAGRAHGYVCTGPGAQGEYSGCWAHGFESLGVFTGPGGHSYQGHWQGGKR
 EGLGVERKSRWTYRGEWLGGKGRSGVWESVSLRYAGLWKDGFQDGYGTETYSDDGTYQGQWQAGKRHG
 YGVRQSVPYHQAALLRSPRRTSLDSGHSDPPTPPPPLPLPGDEGGSPASGSRGGFVLAGPGDADGASSRK
 RTPAAGGFFRRSLLLGLRAGGRRSSLGSKRSLRSEVSSEVSTGPPGSEASGPPAAAPPALIEGSATE
 VYAGEWRAARRSFGVQSRSNGLRYEGEWLGNQRHGYGRTRPDGSREEGKYKRNRLVHGGRVRSLLPLA
 LRRGKVKKEVDRAVEGARRAVSAARQRQEIAAAARAADALLKAVAASSVAEKAVEAARMAKLI AQDLQPML
 EAPRRRPRQDSEGSDEPLDEDSPGVYENGLTPSEGSPELPSPPASSRQPWRPPACRSPLPPGGDQGPFS
 SPKAWPEEWGGAQAEELAGYEADEAGMQGPGPRDGSPLLGGCSDSSGSLREEEGEDEEPLPLRAPA
 GTEPEPIAMLVLRGSSSRGHDAGCLTEELGEPAAATERPAQPGAANPLVVGAVALLDL SLAFLFSQLLT

TRTRPLEQKLISEEDLAANDILDYKDDDDKV

Chromatograms: https://cdn.origene.com/chromatograms/mg3903_c09.zip

Restriction Sites: SgfI-MluI

Cloning Scheme:



ACCN: NM_001146028

ORF Size: 1884 bp

OTI Disclaimer: The molecular sequence of this clone aligns with the gene accession number as a point of reference only. However, individual transcript sequences of the same gene can differ through naturally occurring variations (e.g. polymorphisms), each with its own valid existence. This clone is substantially in agreement with the reference, but a complete review of all prevailing variants is recommended prior to use. [More info](#)

OTI Annotation: This clone was engineered to express the complete ORF with an expression tag. Expression varies depending on the nature of the gene.

Components: The ORF clone is ion-exchange column purified and shipped in a 2D barcoded Matrix tube containing 10ug of transfection-ready, dried plasmid DNA (reconstitute with 100 ul of water).

- Reconstitution Method:
1. Centrifuge at 5,000xg for 5min.
 2. Carefully open the tube and add 100ul of sterile water to dissolve the DNA.
 3. Close the tube and incubate for 10 minutes at room temperature.
 4. Briefly vortex the tube and then do a quick spin (less than 5000xg) to concentrate the liquid at the bottom.
 5. Store the suspended plasmid at -20°C. The DNA is stable for at least one year from date of shipping when stored at -20°C.

RefSeq: [NM_001146028.1](#), [NP_001139500.1](#)

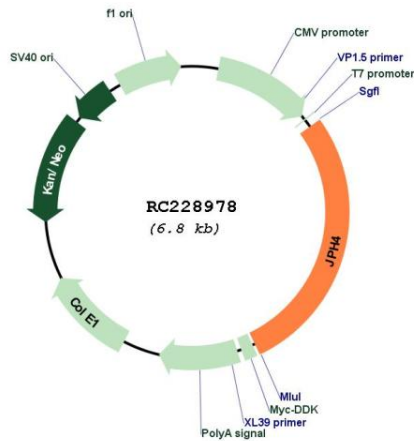
RefSeq ORF: 1887 bp

Locus ID: 84502

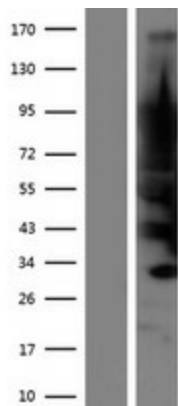
UniProt ID: [Q96JJ6](#)
 Cytogenetics: 14q11.2
 MW: 65.7 kDa

Gene Summary: This gene encodes a member of the junctophilin family of transmembrane proteins that are involved in the formation of the junctional membrane complexes between the plasma membrane and the endoplasmic/sarcoplasmic reticulum in excitable cells. The encoded protein contains a conserved N-terminal repeat region called the membrane occupation and recognition nexus sequence that is found in other members of the junctophilin family. Alternative splicing results in multiple transcript variants. [provided by RefSeq, Mar 2009]

Product images:



Circular map for RC228978



Western blot validation of overexpression lysate (Cat# [LY432005]) using anti-DDK antibody (Cat# [TA50011-100]). Left: Cell lysates from untransfected HEK293T cells; Right: Cell lysates from HEK293T cells transfected with RC228978 using transfection reagent MegaTran 2.0 (Cat# [TT210002]).