

Product datasheet for **RC228967**

EME1 (NM_001166131) Human Tagged ORF Clone

Product data:

Product Type:	Expression Plasmids
Product Name:	EME1 (NM_001166131) Human Tagged ORF Clone
Tag:	Myc-DDK
Symbol:	EME1
Synonyms:	MMS4L; SLX2A
Mammalian Cell Selection:	Neomycin
Vector:	pCMV6-Entry (PS100001)
E. coli Selection:	Kanamycin (25 ug/mL)



[View online »](#)

ORF Nucleotide Sequence:

>RC228967 representing NM_001166131
 Red=Cloning site Blue=ORF Green=Tags(s)

TTTTGTAATACGACTCACTATAGGGCGGCCGGAATTCGTCGACTGGATCCGGTACCGAGGAGATCTGCC
 GCC**CGCATCGCC**

ATGGCTCTAAAGAAGTCATCACCCCTCACTGGATTCTGGTGATAGTGACTCTGAGGAGTTGCCAACATTTG
 CCTTCTGAAGAAGGAACCATCTTCAACAAAGAGGAGACAGCCTGAAAGGGAAGAGAAGATTGTAGTGGT
 TGACATCTCAGATTGTGAAGCCTCCTGTCTCCAGCACCAGAGTTATTTTACCACCTGTCCCAGAAATA
 GCTGAAACTGTCACACAAACACAGCCAGTCAGGTTGCTAAGCAGTGAAAGTGAAGATGAAGAAGAATTTA
 TTCCTCTGGCTCAAAGGCTTACATGTAAGTTTCTGACCCACAAGCAACTGAGCCCTGAGGACTCTAGCTC
 CCCAGTTAAAAGTGTGGATCATCAAATAATGAAGTGCATCATGTGACTGGAAAAAGCCCTTTCCA
 AAGATCCCTGAAGTCCCTCCATGATACCCAGAGAGGAGTGCAGCAGATAACAAGGACCTGATCTTAG
 ATCCATGTCTCAGCTTCCAGCCTACCTGTCTACCTGCCCTGGCCAGAGCAGCAGCTTGGCAGTAACCAA
 AACAAATTCTGACATCCTTCCACCCAGAAGAAAACCAAGCCGAGTCAGAAGGTCCAGGGAAGAGGCTCA
 CACGGATGCCGGCAGCAGAGACAAGCAAGGCAGAAGGAAAGCACCTGAGAAGACAGGAAAGAAAGAAATG
 CAGCACTGGTTACCAGGATGAAAGCCCAGAGGCCAGAGGAATGCTTAAAAACATCATTGTAGTGTGGA
 TCCAGTGTCTTACAGATGGAAGGTGGGGGCCAGCTCCTAGGAGCACTGCAGACCATGGAGTGCCGCTGT
 GTGATTGAGGCGCAGGCTGTGCCCTTGCAGTGTCACTTGGAGGAGAAGGGCTGGGCCGTCTGAGGACAGAG
 AGGACTGGGTGGAGGAGCCAACAGTACTGGTGTGCTCCGGGCAGAGGCATTTGTGTCCATGATCGACAA
 TGGAAAGCAGGGAAGCCTGGACAGCACTATGAAAGGGAAGGAAACGCTTCAGGGCTTTGTAAGTACATC
 ACAGAAAGACAGCAGGGAAGCTCTGTCACTGGTATTGTGGATCAGGAGAAATGCTTCAGCCTGGAGC
 TGCTGTTCTTTGATTTCTCCCTGCCACAGTCTCAGAATCCTCAAGAAGAGGGAACAGGGAGCAAA
 TAAACAGACCAAGAAGCAGCAGCAGAGACAACCCAGAGGCCAGCATAGGGTCCATGGTATCCAGGGTACAG
 GCTGAAGAGGCATTGGTGGATCTGCAGCTACACACAGAAGCCCAGGCTCAAATTTGCAGAGCTGGAAG
 AGCTGGCCGACTTCACATGCGCATTACAAAGGCTGTGGCTGAGGCGCCCTTCAAGAAGCTCCGAGATGA
 AACTACCTTCTCCTTCTGTCTGGAGAGTACTGGGCTGGAGGGGTGAAGGTGGACCTTGTGGCAGGGGA
 CTCGCACTAGTCTGGAGGAGACAGATTACGAGCTGAACCGAGTCAAGCTGGAAATGGCCAGTGCAGTTG
 TGAATGCCTATCCCTCCCACAGCTCCTGGTACAGGCTTATCAGCAGTGTTCGCGATAAAGAACGCCA
 GAATTTGCTCGCAGACATACAGGTGCGCCGTGGGAAGGTGTGACATCCACTTCTCGCCGATTGGACCA
 GAACTATCCAGGCGTATCTACCTCAGATGACCACTTTACAGCCACATCTCTTTAGATAGTGTGAC

ACGCGTACGCGGCCGCTCGAGCAGAAACTCATCTCAGAAGAGGATCTGGCAGCAAATGATATCCTGGATT
 ACAAGGATGACGACGATAAGGTTTAA

Protein Sequence:

>RC228967 representing NM_001166131
 Red=Cloning site Green=Tags(s)

MALKKSSPSLDSGDSSEELPTFAFLKKEPSSTKRRQPEREEKIVVVDISDCEASCPPAPELFSPPVPEI
 AETVTQTQPVRLLSSESEDEEFLIPLAQLRCKFLTHKQLSPEDSSSPVKSVDLHQNEGASCDWKKPFP
 KIPEVPLHDTPERSAADNKDLILDPCQLPAYLSTCPGQSSSLAVTKTNSDILPPQKKTQPSQVQGRGS
 HGCRQQRQARQKESTLRRQERKNAALVTRMKAQRPEECLKHIIVLDPVLLQMEGGGQLLQALQTMERC
 VIEAQAVPCSVTWRRRAGPSEDREDWVEEPTVLVLLRAEAFVSMIDNGKQGLDSTMKGKETLQGFVTDI
 TAKTAGKALSLVIDQEKCFLELLFFDFLPCTSAQNPPRRGKQGANKQTKKQQRQPEASIGSMVSRVD
 AEEALVDLQLHTEAQAQIVQSWKELADFTCAFTKAVAEAPFKLRDETTFSFCLESDWAGGVKVDLAGRG
 LALVWRRQIQQLNRVSLMASAVVNAYSPQLLVQAYQQCFSDKERQNLADIQVRRGEGVTSTSRRIIGP
 ELSRRIYLQMTTLQPHLSLDSAD

TRTRPLEQKLISEEDLAANDILDYKDDDDKV

Chromatograms:

https://cdn.origene.com/chromatograms/mk8101_e03.zip

Restriction Sites:

Sgfl-Mlul

Cloning Scheme:


ACCN: NM_001166131

ORF Size: 1749 bp

OTI Disclaimer: The molecular sequence of this clone aligns with the gene accession number as a point of reference only. However, individual transcript sequences of the same gene can differ through naturally occurring variations (e.g. polymorphisms), each with its own valid existence. This clone is substantially in agreement with the reference, but a complete review of all prevailing variants is recommended prior to use. [More info](#)

OTI Annotation: This clone was engineered to express the complete ORF with an expression tag. Expression varies depending on the nature of the gene.

Components: The ORF clone is ion-exchange column purified and shipped in a 2D barcoded Matrix tube containing 10ug of transfection-ready, dried plasmid DNA (reconstitute with 100 ul of water).

- Reconstitution Method:**
1. Centrifuge at 5,000xg for 5min.
 2. Carefully open the tube and add 100ul of sterile water to dissolve the DNA.
 3. Close the tube and incubate for 10 minutes at room temperature.
 4. Briefly vortex the tube and then do a quick spin (less than 5000xg) to concentrate the liquid at the bottom.
 5. Store the suspended plasmid at -20°C. The DNA is stable for at least one year from date of shipping when stored at -20°C.

RefSeq: [NM_001166131.1](#), [NP_001159603.1](#)

RefSeq Size: 2371 bp

RefSeq ORF: 1752 bp

Locus ID: 146956

UniProt ID: [Q96AY2](#)

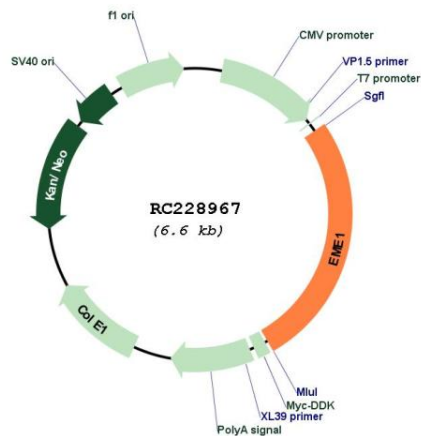
Cytogenetics: 17q21.33

Protein Pathways: Homologous recombination

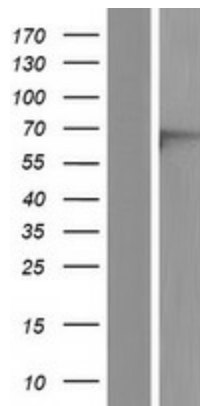
MW: 64.8 kDa

Gene Summary: This gene encodes a protein that complexes with methyl methanesulfonate-sensitive UV-sensitive 81 protein to form an endonuclease complex. The encoded protein interacts with specific DNA structures including nicked Holliday junctions, 3'-flap structures and aberrant replication fork structures. This protein may be involved in repairing DNA damage and in maintaining genomic stability. Alternative splicing results in multiple transcript variants. [provided by RefSeq, Oct 2009]

Product images:



Circular map for RC228967



Western blot validation of overexpression lysate (Cat# [LY431994]) using anti-DDK antibody (Cat# [TA50011-100]). Left: Cell lysates from untransfected HEK293T cells; Right: Cell lysates from HEK293T cells transfected with RC228967 using transfection reagent MegaTran 2.0 (Cat# [TT210002]).