

Product datasheet for **RC228964**

ZNF583 (NM_001159860) Human Tagged ORF Clone

Product data:

Product Type:	Expression Plasmids
Product Name:	ZNF583 (NM_001159860) Human Tagged ORF Clone
Tag:	Myc-DDK
Symbol:	ZNF583
Mammalian Cell Selection:	Neomycin
Vector:	pCMV6-Entry (PS100001)
E. coli Selection:	Kanamycin (25 ug/mL)



[View online »](#)

ORF Nucleotide Sequence:

>RC228964 ORF sequence
 Red=Cloning site Blue=ORF Green=Tags(s)

TTTTGTAATACGACTCACTATAGGGCGGCCGGAATTCGTCGACTGGATCCGGTACCGAGGAGATCTGCC
 GCC**GCGATCGCC**

ATGTCCAAGGATTTGGTACATTTGGGATGTGGCTGTAATTTCTCTCAAGAGGAATGGGAATGGCTGA
 ACCCTGCTCAGAGGAATTTGTACAGGAAAGTGATGTTGGAGAACACAGGAGCTTGGTATCATTGGGAGT
 TTCTGTTTCTAAGCCAGATGTGATCTCATTATTGGAGCAAGGAAAAGAGCCCTGGATGGTGAAGAAGGAG
 GGAACAAGAGGCCATGCCCTGATTGGGAGTATGTATTTAAAAACAGTGAATTTTCATCAAAGCAAGAGA
 CATATGAAGAATCATCAAAGTTGTGACAGTGGGAGCAAGACATCTTAGTTATAGCCTTGACTATCCAG
 TTTGAGAGAAGACTGTCAAAGTGAAGTGGTATAAGAACCAGCTGGGAAGTCAAGAGGTACATCTTAGT
 CAATTAATCATCACTCATAAAGAAATCCTTCCAGAAGTCAAATAAAGAATAAACAATCTTGCCAAA
 CATTCCACCAGGATAAATCTTTGATATACAACAGAGTTTCCCACCAAGAAAAAGCACATAAGCATGA
 ACCACAAAAGAAAAGTTACCGAAAAAATCTGTTGAAATGAAACATAGGAAAGTCTATGTAGAAAAGAAA
 CTTTTGAAATGTAATGATTGTGAGAAAAGCTTCAACCAGAGCTCATCCCTTACTTTCATCAGAGAATTC
 ATACTGGAGAGAAACCTATGCATGTGTTGAATGTGGGAAAACGTTACGCCAGAGTGCAAACTTGGCGCA
 ACATAAGAGAATACATACTGGAGAGAAACCTATGAATGTAAGAATGTAGGAAAGCCTTCAGCCAGAAT
 GCACACCTGGCCCAACATCAGAGAGTTCATACTGGAGAGAAACCTTATCAGTGTAAAGAATGTAAGAAA
 CCTTCAGCCAGATTGCACACCTGACTCAGCATCAGAGAGTTCATACTGGAGAGAGACCTTTCGAATGTAT
 TGAATGTGGAAGGCCTTAGTAATGGTTCATTTCTTGCCTCAGCATCAGAGAATTCATACAGGAGAGAAA
 CCTTATGTGTGAATGTGTGTGGGAAAGCCTTAGCCATCGTGGATACCTAATTGTACATCAGAGAATTC
 ATACTGGAGAGAGACCCTACGAATGTAAGGAATGTAGGAAAGCCTTCAGCCAGTATGCACACCTTGCTCA
 ACATCAGAGAGTTCATACTGGAGAAAAACCTTATGAATGTAAGTATGTAGGAAAGCCTTCAGCCAAAT
 GCATACCTTGATCAACATCAGAGGGTTCATACTGGAGAGAAACCTATGAATGATTGAATGTGGGAAGG
 CCTTTAGCAATAGTTCATCACTTGACACAACATCAGAGAAGTTCATACTGGAGAAAAACCTATATGTGTAA
 GGAATGTAGGAAAACATTTAGCCAGAATGCAGGCCTTGCTCAACATCAGAGAATTCATACTGGAGAGAAA
 CCTTATGAATGTAATGTTGTGGGAAAGCATTAGCTATAGTGGATCTCTACTCTACATCAGAGAATTC
 ATACTGGAGAAAGACCCTATGAATGTAAGATTGCAGGAAATCTTTCAGGCAGCGTGCACATCTTGCTCA
 TCATGAGAGAATTCATACTATGGAGTATTCTTGACTCTTCTCTCCCTCACCTCCACATCAAATCAG
 TTGCCAAGACCTGTAGGTTTCATCTCC

ACGCGTACGCGGCCGCTCGAGCAGAAACTCATCTCAGAAGAGGATCTGGCAGCAAATGATATCCTGGATT
 ACAAGGATGACGACGATAAGGTTTAA

Protein Sequence:

>RC228964 protein sequence
 Red=Cloning site Green=Tags(s)

MSKDLVTFGDVAVNFSQEEWELNPAQRNL YRKVMLENYRSLVSLGVSVSKPDVISLLEQKPEPMMVKKE
 GTRGPCPDWEYVFNSEFSSKQETYEESKVVTVGARHLSYSLDYPSLREDCQSEWDYKNQLGSQEVHLS
 QLIITHKEILPEVQNKEYNKSQWTFHQDTIFDIQQSFPTKEKAHKHEPQKKS YRKKSVEMKHRKVYVEKK
 LLKCNDCQKVFNQSSSLTLHQRIHTGEKPYACVECGKTFQSANLAQHRIHTGEKPYECKEKRKAFSQN
 AHLAQHQRVHTGEKPYQCKECKKAFSQAHLTQHQRVHTGERPFECIECGKAFSNGSFLAQHQRIHTGEK
 PYVCNVCQKAFSHRGLIVHQRIHTGERPYECKEKRKAFSQAHLAQHQRVHTGEKPYECKVCRKAFSQA
 AYLDQHQRVHTGEKPYECIECGKAFSNGSFLAQHQRSHTGEKPYMCKEKRKTF SQNAGLAHQHQRIHTGEK
 PYECNVCQKAFSYSGSLTLHQRIHTGERPYECKDCRKSFRQRAHLAHHRIHTMESFLTLSSPSPSTSNQ
 LRPVGFIS

TRTRPLEQKLISEEDLAANDILDYKDDDDKV

Chromatograms:

https://cdn.origene.com/chromatograms/mk6460_e01.zip

Restriction Sites:

Sgfl-Mlul

Cloning Scheme:


ACCN: NM_001159860

ORF Size: 1707 bp

OTI Disclaimer: The molecular sequence of this clone aligns with the gene accession number as a point of reference only. However, individual transcript sequences of the same gene can differ through naturally occurring variations (e.g. polymorphisms), each with its own valid existence. This clone is substantially in agreement with the reference, but a complete review of all prevailing variants is recommended prior to use. [More info](#)

OTI Annotation: This clone was engineered to express the complete ORF with an expression tag. Expression varies depending on the nature of the gene.

Components: The ORF clone is ion-exchange column purified and shipped in a 2D barcoded Matrix tube containing 10ug of transfection-ready, dried plasmid DNA (reconstitute with 100 ul of water).

Reconstitution Method:

1. Centrifuge at 5,000xg for 5min.
2. Carefully open the tube and add 100ul of sterile water to dissolve the DNA.
3. Close the tube and incubate for 10 minutes at room temperature.
4. Briefly vortex the tube and then do a quick spin (less than 5000xg) to concentrate the liquid at the bottom.
5. Store the suspended plasmid at -20°C. The DNA is stable for at least one year from date of shipping when stored at -20°C.

RefSeq: [NM_001159860.1](#), [NP_001153332.1](#)

RefSeq Size: 2538 bp

RefSeq ORF: 1710 bp

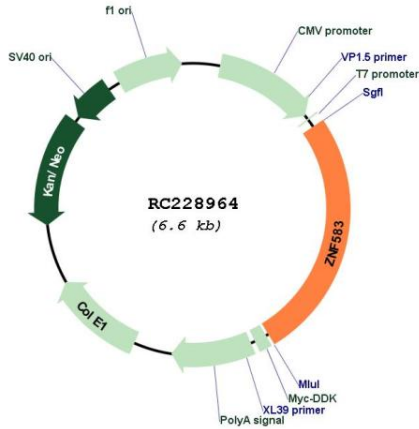
Locus ID: 147949

UniProt ID: [Q96ND8](#)

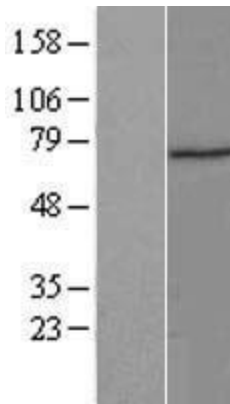
Cytogenetics: 19q13.43

Protein Families: Transcription Factors
MW: 66 kDa
Gene Summary: May be involved in transcriptional regulation.[UniProtKB/Swiss-Prot Function]

Product images:



Circular map for RC228964



Western blot validation of overexpression lysate (Cat# [LY431991]) using anti-DDK antibody (Cat# [TA50011-100]). Left: Cell lysates from untransfected HEK293T cells; Right: Cell lysates from HEK293T cells transfected with RC228964 using transfection reagent MegaTran 2.0 (Cat# [TT210002]).