

Product datasheet for **RC228962**

FATP2 (SLC27A2) (NM_001159629) Human Tagged ORF Clone

Product data:

Product Type:	Expression Plasmids
Product Name:	FATP2 (SLC27A2) (NM_001159629) Human Tagged ORF Clone
Tag:	Myc-DDK
Symbol:	SLC27A2
Synonyms:	ACSVL1; FACVL1; FATP2; hFACVL1; HsT17226; VLACS; VLCS
Vector:	pCMV6-Entry (PS100001)
E. coli Selection:	Kanamycin (25 ug/mL)
Cell Selection:	Neomycin



[View online »](#)

ORF Nucleotide Sequence:

>RC228962 representing NM_001159629
 Red=Cloning site Blue=ORF Green=Tags(s)

TTTTGTAATACGACTCACTATAGGGCGGCCGGAATTCGTCGACTGGATCCGGTACCGAGGAGATCTGCC
 GCC**CGGATCGCC**

ATGCTTTCCGCCATCTACACAGTCTGGCGGGACTGCTGTTCTGCCGCTCTGGTGAACCTCTGCTGCC
 CATACTTCTTCCAGGACATAGGCTACTTCTGAAGGTGGCCGCCGTGGCCGGAGGGTGGCCAGCTACGG
 GAAGCGCGCGCCGGCGCCACCATCTGCGGGCGTTCCTGGAGAAAGCGCGCCAGACGCCACACAAGCCT
 TTTCTGCTCTCCGCGACGAGACTCTCACCTACGCGCAGGTGGACCGCGCAGCAATCAAGTGGCCCGGG
 CGCTGCACGACCCTCGGCTGCGCCAGGAGACTGCGTGGCGCTCCTTATGGGTAACGAGCCGGCCTA
 CGTGTGGCTGTGGCTGGGCTGGTGAAGCTGGGCTGTGCCATGGCGTGCCTCAATTACAACATCCGCGCG
 AAGTCCCTGCTGCACTGCTTCCAGTGTGCGGGCGAAGGTGCTGCTGGTGTGCCAGAACTACAAGCAG
 CTGTGCAAGAGATACTGCCAAGCCTTAAAAAGATGATGTGCCATCTATTATGTGAGCAGAACTCTAA
 CACAGATGGGATTGACTCTTTCCAGCAAAAGTGGATGAAGTATCAACTGAACCTATCCCAGAGTATGG
 AGGTCTGAAGTCACTTTTCCACTCCTGCCTTATACATTTATACTTCTGGAACCAGAGGTCTACTCTTG
 CCTTGGCGACTAAATTTTCAGCCAGCCAGTTTTGGGATGACTGCAGAAAAACAACGTCCTGTCATTCA
 GTATATCGGTGAACCTGCTTCGGTATTTATGCAACTCACCACAGAAACCAATGACCGTGATCATAAAGTG
 AGACTGGCACTGGGAAATGGCTTACGAGGAGATGTGTGGAGACAAATTTGTCAAGAGATTTGGGGACAT
 GCATCTATGAGTCTATGCTGCCACTGAAGGCAATATTGGATTTATGAATTATGCGAGAAAAAGTTGGTGC
 TGTTGGAAGAGTAACTACCTACAGAAAAAATCATAACTTATGACCTGATTAATATGATGTGGAGAAA
 GATGAACCTGTCCGTGATGAAAAATGGATATTGCGTCAGAGTCCCAAAGGTGAAGTTGGACTTCTGGTTT
 GCAAAAATCACACAACCTACACCATTTAATGGCTATGCTGGAGCAAAGGCTCAGACAGAGAAAAAAT
 GAGAGATGCTTTAAGAAAGGAGACCTCTATTTCAACAGTGGAGATCTCTTAATGGTTGACCATGAAAAAT
 TTCATCTATTTCCACGACAGAGTTGGAGATACATTCGGTGGAAAAGGGGAAAAATGTGGCCACCCTGAAG
 TTGCTGATACAGTTGGACTGGTTGATTTGTCCAAGAAGTAAATGTTTATGGAGTGCATGTGCCAGATCA
 TGAGGGTGCATTGGCATGGCCTCCATCAAAATGAAAGAAAACCATGAATTTGATGGAAAGAACTCTTT
 CAGCACATTGCTGATTACCTACCTAGTTATGCAAGGCCCGTTTCTAAGAATACAGGACACCATTGAGA
 TCACTGGAACCTTTAAACACCGCAAAATGACCCTGGTGGAGGAGGGCTTTAACCTGCTGTCATCAAGA
 TGCCTTGATTTCTGGATGACACAGCAAAATGTATGTGCCTATGACTGAGGACATCTATAATGCCATA
 AGTGCTAAAACCTGAACTC

ACGCGTACGCGGCCGCTCGAGCAGAAACTCATCTCAGAAGAGGATCTGGCAGCAAATGATATCCTGGATT
 ACAAGGATGACGACGATAAGGTTTAA

Protein Sequence:

>RC228962 representing NM_001159629
 Red=Cloning site Green=Tags(s)

MLSAIYTVLAGLLFLPLLVLNCCPYFFQDIGYFLKVAAVGRRVRSYGRKRRPARTILRAFLEKARQTPHKP
 FLLFRDETLTYAQVDRRSNQVARALHDHGLRQGDVALLMGNEPAYVWLWGLVKLGCAMACLNYNIRA
 KSLHLCFQCCGAKVLLVSPQLQAAVEEILPSLKKDDVSIYYVSRSTNDGIDSFLDKVDEVSTEPIPESW
 RSEVTFSTPALYIYTSGTTGATLALRTKFSASQFWDDCRKYNVTVIQYIGELLRYLCNSPQKPNDRDHK
 RLALGNLGRDVRQFVKRFGDICIYEFYAATEGNIGFMNYARKVAVGRVNYLQKKIITYDLIKYDVEK
 DEPVRDENGVCVRVPKGEVGLLVCKITQLTPFNQYAGAKAQTEKKLRDVFVKGDLYFNSGDLMLVDHEN
 FIYFHDRVGDTRWKGENVATTEVADTVGLVDFVQEVNVYGVHVPDHEGRIGMASIKMKENHEFDGKFLF
 QHIADYLPYARPRFLRIQDTIEITGTFKHKMTLVEEGFNPAVIKDALYFLDDTAKMYVPMTEIYNAI
 SAKTLKL

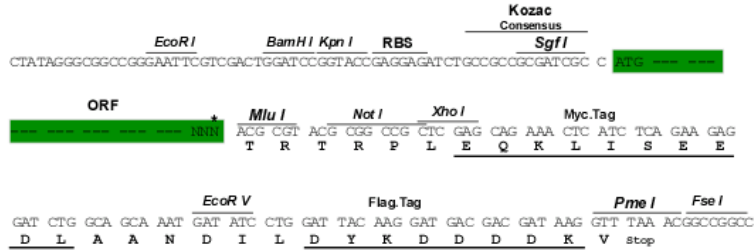
TRTRPLEQKLISEEDLAANDILDYKDDDDKV

Restriction Sites:

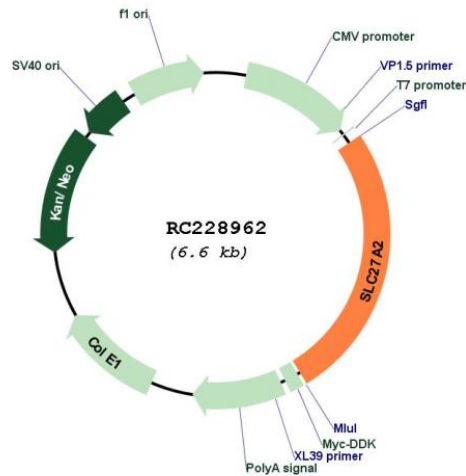
Sgfl-MluI

Cloning Scheme:

Cloning sites used for ORF Shuttling:



* The last codon before the Stop codon of the ORF

Plasmid Map:


ACCN: NM_001159629

ORF Size: 1701 bp

OTI Disclaimer:	The molecular sequence of this clone aligns with the gene accession number as a point of reference only. However, individual transcript sequences of the same gene can differ through naturally occurring variations (e.g. polymorphisms), each with its own valid existence. This clone is substantially in agreement with the reference, but a complete review of all prevailing variants is recommended prior to use. More info
OTI Annotation:	This clone was engineered to express the complete ORF with an expression tag. Expression varies depending on the nature of the gene.
Components:	The ORF clone is ion-exchange column purified and shipped in a 2D barcoded Matrix tube containing 10ug of transfection-ready, dried plasmid DNA (reconstitute with 100 ul of water).
Reconstitution Method:	<ol style="list-style-type: none">1. Centrifuge at 5,000xg for 5min.2. Carefully open the tube and add 100ul of sterile water to dissolve the DNA.3. Close the tube and incubate for 10 minutes at room temperature.4. Briefly vortex the tube and then do a quick spin (less than 5000xg) to concentrate the liquid at the bottom.5. Store the suspended plasmid at -20°C. The DNA is stable for at least one year from date of shipping when stored at -20°C.
RefSeq:	NM_001159629.1 , NP_001153101.1
RefSeq ORF:	1704 bp
Locus ID:	11001
UniProt ID:	O14975
Cytogenetics:	15q21.2
Protein Families:	Transmembrane
Protein Pathways:	PPAR signaling pathway
MW:	64.4 kDa
Gene Summary:	The protein encoded by this gene is an isozyme of long-chain fatty-acid-coenzyme A ligase family. Although differing in substrate specificity, subcellular localization, and tissue distribution, all isozymes of this family convert free long-chain fatty acids into fatty acyl-CoA esters, and thereby play a key role in lipid biosynthesis and fatty acid degradation. This isozyme activates long-chain, branched-chain and very-long-chain fatty acids containing 22 or more carbons to their CoA derivatives. It is expressed primarily in liver and kidney, and is present in both endoplasmic reticulum and peroxisomes, but not in mitochondria. Its decreased peroxisomal enzyme activity is in part responsible for the biochemical pathology in X-linked adrenoleukodystrophy. Alternatively spliced transcript variants encoding different isoforms have been found for this gene. [provided by RefSeq, Apr 2009]