

Product datasheet for **RC228948**

STAU2 (NM_001164381) Human Tagged ORF Clone

Product data:

Product Type:	Expression Plasmids
Product Name:	STAU2 (NM_001164381) Human Tagged ORF Clone
Tag:	Myc-DDK
Symbol:	STAU2
Synonyms:	39K2; 39K3
Vector:	pCMV6-Entry (PS100001)
E. coli Selection:	Kanamycin (25 ug/mL)
Cell Selection:	Neomycin



[View online »](#)

ORF Nucleotide Sequence:

>RC228948 representing NM_001164381
 Red=Cloning site Blue=ORF Green=Tags(s)

TTTTGTAATACGACTCACTATAGGGCGGCCGGAATTCGTCGACTGGATCCGGTACCGAGGAGATCTGCC
 GCC**CGGATCGCC**

ATGCTTCAAATAAATCAGATGTTCTCAGTGCAGCTGAGTCTTGGTGAGCAGACATGGGAATCCGAAGGCA
 GCAGTATAAAGAAGGCTCAGCAGGCTGTTGCCAATAAAGCTTTGACTGAATCTACGCTTCCCAAACCACT
 TCAGAAGCCACCCAAAAGTAATGTTAAACAATAACCCAGGCAGTATAACTCCAACCTGTGGAACCTGAATGGG
 CTTGCTATGAAAAGGGGAGAGCCTGCCATCTACAGGCCATTAGATCCAAAGCCATTCCCAAATTATAGAG
 CTAATTACAACCTTCGGGGCATGTACAATCAGAGGTATCATTGCCCAGTGCCTAAGATCTTTTATGTTCA
 GCTCACTGTAGGAAATAATGAATTTTTGGGGAAGGAAAGACTCGACAAGCTGCTAGACACAATGCTGCA
 ATGAAAGCCCTCAAGCACTGCAGAATGAACCTATTCCAGAAAGATCTCCTCAGAATGGTGAATCAGGAA
 AGGATATGGATGATGACAAAGATGCAAAATAAGTCTGAGATCAGCTTAGTGTGTTGAAATTGCTCTGAAGCG
 AAATATGCCTGTCAGTTTTGAGGTTATTAAGAAAGTGGACCACCACATATGAAAAGCTTTGTTACTCGA
 GTGTCAGTAGGAGAGTTCTCTGCAGAAGGAGAAGGAAATAGCAAAAACTCTCCAAGAAGCGCGCTGCGA
 CCACCGTCTTACAGGAGCTTAAAAAATCCACCTCTTCTGTGGTGGAAGCCAAAACTATTTTTTAA
 AAAACGCCCTAAAACAATAGTAAAGGCCGACCAGAATATGGCCAAGGGATGAACCTATTAGCCGCGCTG
 GCGCAAAATCAACAGGCCAAAAAGGAAAAGGAGCCGGATTATGTTTTGCTTTCAGAAAGAGGAATGCCTC
 GACGTCGAGAATTTGTATGCAGGTGAAGGTAGGCAATGAAGTTGCTACAGGAACAGGACCTAATAAAAA
 GATAGCCAAAAAAATGCTGCAGAAGCAATGCTGTTACAACCTGGTTATAAAGCATCCACTAATCTTCAG
 GATCAACTTGAGAAGACAGGGGAAAACAAGGATGGAGTGGTCCAAGCCCTGGGTTTCTGAACCAACAA
 ATAATACTCCAAAAGGAATCTTCATTTGTCTCCTGATGTTTATCAAGAGATGGAAGCCAGCCGCCACAA
 AGTAATCTCTGGCACTACTCTAGGCTATTTGTACCCCAAAGATATGAACCAACCTCAAGCTCTTTCTTC
 AGTATATCTCCACATCGAATAGTTCAGCTACAATTGCCAGGAACTCCTTATGAATGGAACATCTTCTA
 CAGCTGAAGCCATAGGTTTAAAAGGAAGTTCTCTACTCCCCTTGTCTCCAGTACAACCTTAAAAACA
 ACTGGAATATTTAGCAAGGATTCAAGGCTTTCAGGCAGCCTTAAGTGCCTTGAAACAATTTTCTGAACAA
 GGACTGGATCCAATCGATGGAGCAATGAATATCGAAAAAGTTCTCTTAAAAACAAGCCAAGCATCTGA
 GAGAGAAAGCGGACAATAACCAGGCACCCCGGCTCCATCGCTCAGGACTGCAAGAAATCAAACCTCGGC
 CGTC

ACGCGTACGCGGCCGCTCGAGCAGAAACTCATCTCAGAAGAGGATCTGGCAGCAAATGATATCCTGGATT
 ACAAGGATGACGACGATAAGGTTTAA

Protein Sequence:

>RC228948 representing NM_001164381
 Red=Cloning site Green=Tags(s)

MLQINQMFVQLSLGEQTWESESSIKKAQQAVANKALTESTLPKPVQKPPKSNVNNPNSITPTVELNG
 LAMKRGEPAIYRPLDPKPFNYRANYNFRGMYNQRYHCPVPKIFYVQLTVGNNEFFGEGKTRQAAARHNAA
 MKALQALQNEPIPERSPQNGESGKMDDDKDANKSEISLVFEIALKRNMPVSFEVIKESGPPHMKSFVTR
 VSVGEFSAEGEGNSKKLSKKRAATTVLQELKLLPPLPVVEKPKLFFKKRPKTIIVKAGPEYQGMPNISRL
 AQIQQAKKEKPEPDYVLLSERGMPRRREFVMQVKVNEVATGTGPNKIIAKKNAAEAMLLQLGYKASTNLQ
 DQLEKTGENKGWSGPKPGFPEPTNNTPKGILHLSPDVYQEMEASRHKVISGTTLGYLSPKDMNQPSSSF
 SISPTSNSATIARELLMNGTSSTAEAIGLKGSSTPPCSPVQPSKQLEYLARIQGFQAALSALKQFSEQ
 GLDPIDGAMNIEKGSLEKQAKHLREKADNNAQPPGSIAQDCKKNSAV

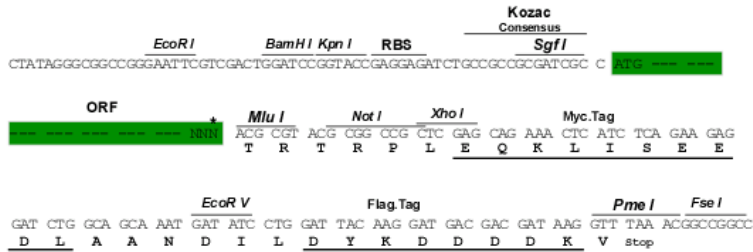
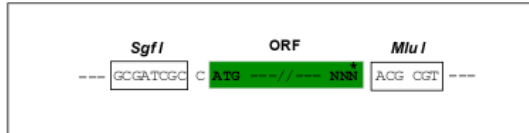
TRTRPLEQKLISEEDLAANDILDYKDDDDKV

Restriction Sites:

Sgfl-MluI

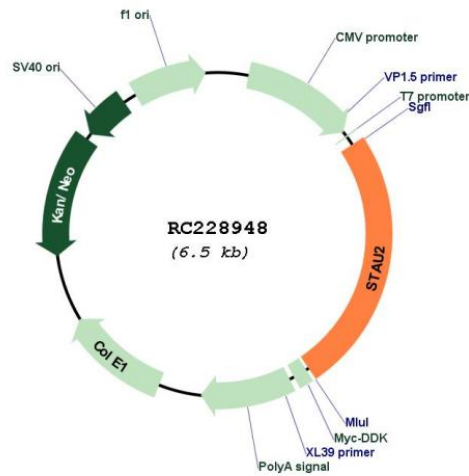
Cloning Scheme:

Cloning sites used for ORF Shuttling:



* The last codon before the Stop codon of the ORF

Plasmid Map:



ACCN:	NM_001164381
ORF Size:	1614 bp
OTI Disclaimer:	The molecular sequence of this clone aligns with the gene accession number as a point of reference only. However, individual transcript sequences of the same gene can differ through naturally occurring variations (e.g. polymorphisms), each with its own valid existence. This clone is substantially in agreement with the reference, but a complete review of all prevailing variants is recommended prior to use. More info
OTI Annotation:	This clone was engineered to express the complete ORF with an expression tag. Expression varies depending on the nature of the gene.
Components:	The ORF clone is ion-exchange column purified and shipped in a 2D barcoded Matrix tube containing 10ug of transfection-ready, dried plasmid DNA (reconstitute with 100 ul of water).
Reconstitution Method:	<ol style="list-style-type: none">1. Centrifuge at 5,000xg for 5min.2. Carefully open the tube and add 100ul of sterile water to dissolve the DNA.3. Close the tube and incubate for 10 minutes at room temperature.4. Briefly vortex the tube and then do a quick spin (less than 5000xg) to concentrate the liquid at the bottom.5. Store the suspended plasmid at -20°C. The DNA is stable for at least one year from date of shipping when stored at -20°C.
RefSeq:	NM_001164381.1 , NP_001157853.1
RefSeq ORF:	1617 bp
Locus ID:	27067
UniProt ID:	Q9NUL3
Cytogenetics:	8q21.11
Protein Families:	Transcription Factors
MW:	58.8 kDa
Gene Summary:	Staufen homolog 2 is a member of the family of double-stranded RNA (dsRNA)-binding proteins involved in the transport and/or localization of mRNAs to different subcellular compartments and/or organelles. These proteins are characterized by the presence of multiple dsRNA-binding domains which are required to bind RNAs having double-stranded secondary structures. Staufen homolog 2 shares 48.5% and 59.9% similarity with drosophila and human staufen, respectively. The exact function of Staufen homolog 2 is not known, but since it contains 3 copies of conserved dsRNA binding domain, it could be involved in double-stranded RNA binding events. Several transcript variants encoding different isoforms have been found for this gene. [provided by RefSeq, Aug 2009]