

Product datasheet for RC228937L3

KRT72 (NM_001146225) Human Tagged Lenti ORF Clone

Product data:

Product Type:	Expression Plasmids
Product Name:	KRT72 (NM_001146225) Human Tagged Lenti ORF Clone
Tag:	Myc-DDK
Symbol:	KRT72
Synonyms:	CK-72; K6irs; K6IRS2; K72; KRT6; KRT6IRS2
Mammalian Cell Selection:	Puromycin
Vector:	pLenti-C-Myc-DDK-P2A-Puro (PS100092)
E. coli Selection:	Chloramphenicol (34 ug/mL)
ORF Nucleotide Sequence:	The ORF insert of this clone is exactly the same as(RC228937).
Restriction Sites:	SgfI-MluI
Cloning Scheme:	

Cloning sites used for ORF Shuttling:



* The last codon before the Stop codon of the ORF.

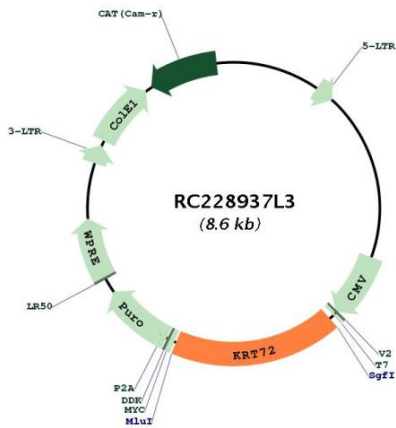
ACCN:	NM_001146225
ORF Size:	1533 bp



[View online »](#)

OTI Disclaimer:	The molecular sequence of this clone aligns with the gene accession number as a point of reference only. However, individual transcript sequences of the same gene can differ through naturally occurring variations (e.g. polymorphisms), each with its own valid existence. This clone is substantially in agreement with the reference, but a complete review of all prevailing variants is recommended prior to use. More info
OTI Annotation:	This clone was engineered to express the complete ORF with an expression tag. Expression varies depending on the nature of the gene.
Components:	The ORF clone is ion-exchange column purified and shipped in a 2D barcoded Matrix tube containing 10ug of transfection-ready, dried plasmid DNA (reconstitute with 100 ul of water).
Reconstitution Method:	<ol style="list-style-type: none">1. Centrifuge at 5,000xg for 5min.2. Carefully open the tube and add 100ul of sterile water to dissolve the DNA.3. Close the tube and incubate for 10 minutes at room temperature.4. Briefly vortex the tube and then do a quick spin (less than 5000xg) to concentrate the liquid at the bottom.5. Store the suspended plasmid at -20°C. The DNA is stable for at least one year from date of shipping when stored at -20°C.
RefSeq:	NM_001146225.1
RefSeq Size:	1903 bp
RefSeq ORF:	1536 bp
Locus ID:	140807
UniProt ID:	Q14CN4
Cytogenetics:	12q13.13
MW:	55.9 kDa
Gene Summary:	Keratins are intermediate filament proteins responsible for the structural integrity of epithelial cells. The type II keratins consist of basic or neutral proteins which are arranged in pairs of heterotypic keratin chains coexpressed during differentiation of simple and stratified epithelial tissues. This gene encodes a type II keratin that is specifically expressed in the inner root sheath of hair follicles. The type II keratins are clustered in a region of chromosome 12q12-q13. Multiple transcript variants encoding different isoforms have been found for this gene.[provided by RefSeq, Jun 2009]

Product images:



Circular map for RC228937L3