

Product datasheet for **RC228921**

Calcitonin receptor (CALCR) (NM_001164738) Human Tagged ORF Clone

Product data:

Product Type:	Expression Plasmids
Product Name:	Calcitonin receptor (CALCR) (NM_001164738) Human Tagged ORF Clone
Tag:	Myc-DDK
Symbol:	Calcitonin receptor
Synonyms:	CRT; CT-R; CTR; CTR1
Mammalian Cell Selection:	Neomycin
Vector:	pCMV6-Entry (PS100001)
E. coli Selection:	Kanamycin (25 ug/mL)



[View online »](#)

ORF Nucleotide Sequence:

>RC228921 representing NM_001164738
 Red=Cloning site Blue=ORF Green=Tags(s)

TTTTGTAATACGACTCACTATAGGGCGGCCGGAATTCGTCGACTGGATCCGGTACCGAGGAGATCTGCC
 GCC**CGGATCGCC**

ATGAGGTTACATTTACAAGCCGGTGTGGCACTGTTTCTTCTTAATCACCAACCCCAATTCTTC
 CTGCCTTTTCAAATCAAACCTATCCAACAATAGAGCCCAAGCATTCTTTACGTCGTAGGACGAAAGAA
 GATGATGGATGCACAGTACAATGCTATGACCGAATGCAGCAGTTACCCGCATACCAAGGAGAAGGTCCA
 TATTGCAATCGCACCTGGGATGGATGGCTGTGCTGGGATGACACACCGGCTGGAGTATTGCCTATCAGT
 TCTGCCAGATTATTTCCGGATTTTGTCCATCAGAAAAGGTTACAAAATACTGTGATGAAAAGGTGT
 TTGGTTTAAACATCCTGAAAACAATCGAACCTGGTCCAATACTATGTGCAATGCTTTCCTCTGAG
 AAAGTGAAGAATGCATATGTTCTGTACTATTTGGCTATTGTGGGTCACTTTGTCAATTTTCCCTAG
 TGATTTCCCTGGGATTTTCGTGTTTTTTCAGGAGCCTTGGCTGCCAAAGGGAACCTGCACAAGAAT
 GTTTCTTACTTACATTCTGAATTCTATGATTATCATCATCCACCTGGTTGAAGTAGTACCAATGGAGAG
 CTCGTGCGAAGGGACCCGGTGGCTGCAAGATTTTGCATTTTTTCCACAGTACATGATGGCCTGCAACT
 ATTTCTGGATGCTCTGTGAAGGGATCTATCTTACACTCATTGTCTGGCTGTGTTTACTGAGAAGCA
 ACGCTTGGGTGGTATTATCTTTGGGCTGGGGTTCCCGCTGGTCCAACCACTATCCATGCTATTACC
 AGGGCCGTGACTTCAATGACAACCTGCTGGCTGAGTGTGGAACCCATTTGCTTTACATAATCCATGGAC
 CTGTGATGGCGCACTTGTGGTCAATTTCTTTTGTCAACATTGTCGGGTGCTTGTGACCAAAAT
 GAGGGAACCCATGAGGCGGAATCCACATGTACCTGAAGGCTGTGAAGGCCACCATGATCCTTGTGCC
 CTGCTGGGAATCCAGTTTGTGCTTTCCCTGGAGACCTTCCAACAAGATGCTTGGGAAGATATATGATT
 ACGTGTGCACTCTGATTCTTTCCAGGGCTTCTTTGTGCGACCATCTACTGCTTGTGCAACAATGA
 GGTCCAACACCGTGAAGCGCCAATGGGCCAATTCAAATTCAGTGAACACGCGTTGGGGGAGGCGC
 CCCTCCAACCGCTCTGCTCGCGCTGCAGCCGCTGCTGCGGAGGCTGGCGACATCCAATTTACATCTGCC
 ATCAGGAGCTGAGGAATGAACGACCAACAACCAAGGCGAGGAGTGTGAGATCATCCCTTTGAATAT
 CATAGAGCAAGAGTCATCTGCT

ACGCGTACGCGGCCGCTCGAGCAGAACTCATCTCAGAAGAGGATCTGGCAGCAATGATATCCTGGATT
 ACAAGGATGACGACGATAAGGTTTAA

Protein Sequence:

>RC228921 representing NM_001164738
 Red=Cloning site Green=Tags(s)

MRFTFTSRCLALFLLLNHPTPILPAFSNQTYPTIEPKPFLYVVGRRKMMDAQYKCYDRMQQLPAYQGE
 YCNRTWDGWLWDDTPAGVLSYQFPCDYFPDFDPSEKVTKYCDEKGVVFKHPENNRWTSNYTMCNAFTPE
 KLKNAYVLYLAIIVGHSLSIFTLVISLGIFFVFRSLGCQRVTLHKNMFLTYILNSMIIIIHLVEVVPNGE
 LVRDPVSCILHFFHQYMMACNYFWMLCEGIYLHTLIVVAVFTEKQRLRWYLLGWGFPLVPTTIIHAIT
 RAVYFNDNCWLSVETHLLYIIHGPMMAALVVNFFLLNIVRVLVTKMRETHEAESHYMLKAVKATMILVP
 LLGIQFVVPWRPSNKMLGKIYDYVMHSLIHFQGFVATIYFCNNEVQTTVKRQWAQFKIQWNQRWGR
 PSNRSARAAAAAAEAGDPIIYICHQELRNEPANNQGEESAEIIPLNIEQESEA

TRTRPLEQKLISEEDLAANDILDYKDDDDKV

Chromatograms:

https://cdn.origene.com/chromatograms/mg2944_b01.zip

Restriction Sites:

Sgfl-Mlul

Cloning Scheme:


ACCN: NM_001164738

ORF Size: 1422 bp

OTI Disclaimer: The molecular sequence of this clone aligns with the gene accession number as a point of reference only. However, individual transcript sequences of the same gene can differ through naturally occurring variations (e.g. polymorphisms), each with its own valid existence. This clone is substantially in agreement with the reference, but a complete review of all prevailing variants is recommended prior to use. [More info](#)

OTI Annotation: This clone was engineered to express the complete ORF with an expression tag. Expression varies depending on the nature of the gene.

Components: The ORF clone is ion-exchange column purified and shipped in a 2D barcoded Matrix tube containing 10ug of transfection-ready, dried plasmid DNA (reconstitute with 100 ul of water).

Reconstitution Method:

1. Centrifuge at 5,000xg for 5min.
2. Carefully open the tube and add 100ul of sterile water to dissolve the DNA.
3. Close the tube and incubate for 10 minutes at room temperature.
4. Briefly vortex the tube and then do a quick spin (less than 5000xg) to concentrate the liquid at the bottom.
5. Store the suspended plasmid at -20°C. The DNA is stable for at least one year from date of shipping when stored at -20°C.

RefSeq: [NM_001164738.1](#), [NP_001158210.1](#)

RefSeq ORF: 1425 bp

Locus ID: 799

UniProt ID: [P30988](#)

Cytogenetics: 7q21.3

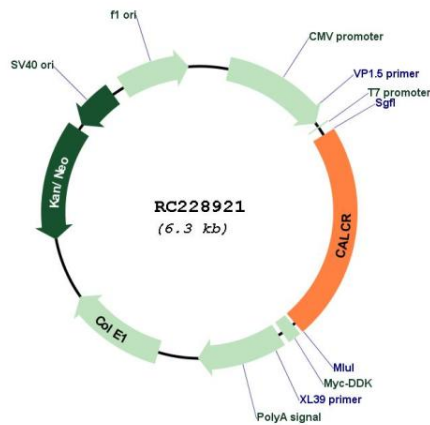
Protein Families: Druggable Genome, GPCR, Transmembrane

Protein Pathways: Neuroactive ligand-receptor interaction

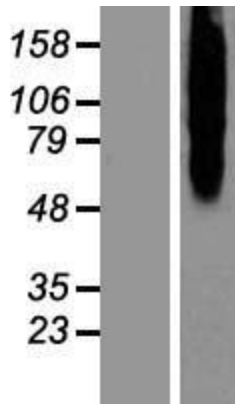
MW: 55.34 kDa

Gene Summary: This gene encodes a high affinity receptor for the peptide hormone calcitonin and belongs to a subfamily of seven transmembrane-spanning G protein-coupled receptors. The encoded protein is involved in maintaining calcium homeostasis and in regulating osteoclast-mediated bone resorption. Polymorphisms in this gene have been associated with variations in bone mineral density and onset of osteoporosis. Alternate splicing results in multiple transcript variants. [provided by RefSeq, Sep 2009]

Product images:



Circular map for RC228921



Western blot validation of overexpression lysate (Cat# [LY431949]) using anti-DDK antibody (Cat# [TA50011-100]). Left: Cell lysates from untransfected HEK293T cells; Right: Cell lysates from HEK293T cells transfected with RC228921 using transfection reagent MegaTran 2.0 (Cat# [TT210002]).