

Product datasheet for **RC228915L1V**

Cannabinoid Receptor I (CNR1) (NM_001160226) Human Tagged ORF Clone Lentiviral Particle

Product data:

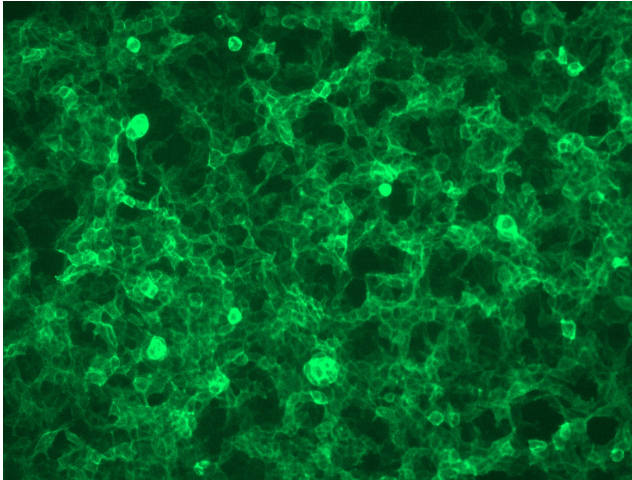
Product Type:	Lentiviral Particles
Product Name:	Cannabinoid Receptor I (CNR1) (NM_001160226) Human Tagged ORF Clone Lentiviral Particle
Symbol:	CNR1
Synonyms:	CANN6; CB-R; CB1; CB1A; CB1K5; CB1R; CNR
Mammalian Cell Selection:	None
Vector:	pLenti-C-Myc-DDK (PS100064)
Tag:	Myc-DDK
ACCN:	NM_001160226
ORF Size:	1416 bp
ORF Nucleotide Sequence:	The ORF insert of this clone is exactly the same as(RC228915).
OTI Disclaimer:	The molecular sequence of this clone aligns with the gene accession number as a point of reference only. However, individual transcript sequences of the same gene can differ through naturally occurring variations (e.g. polymorphisms), each with its own valid existence. This clone is substantially in agreement with the reference, but a complete review of all prevailing variants is recommended prior to use. More info
OTI Annotation:	This clone was engineered to express the complete ORF with an expression tag. Expression varies depending on the nature of the gene.
RefSeq:	NM_001160226.1
RefSeq ORF:	1419 bp
Locus ID:	1268
UniProt ID:	P21554
Cytogenetics:	6q15
Protein Families:	Druggable Genome, GPCR, Transmembrane
Protein Pathways:	Neuroactive ligand-receptor interaction
MW:	52.7 kDa



[View online »](#)

Gene Summary:

This gene encodes one of two cannabinoid receptors. The cannabinoids, principally delta-9-tetrahydrocannabinol and synthetic analogs, are psychoactive ingredients of marijuana. The cannabinoid receptors are members of the guanine-nucleotide-binding protein (G-protein) coupled receptor family, which inhibit adenylate cyclase activity in a dose-dependent, stereoselective and pertussis toxin-sensitive manner. The two receptors have been found to be involved in the cannabinoid-induced CNS effects (including alterations in mood and cognition) experienced by users of marijuana. Multiple transcript variants encoding two different protein isoforms have been described for this gene. [provided by RefSeq, May 2009]

Product images:

[RC228915L1] was used to prepare Lentiviral particles using [TR30037] packaging kit. HEK293T cells were transduced with RC228915L1V particle to overexpress human CNR1-Myc-DDK fusion protein.