

## Product datasheet for **RC228908**

### ZNF610 (NM\_001161425) Human Tagged ORF Clone

#### Product data:

Product Type:	Expression Plasmids
Product Name:	ZNF610 (NM_001161425) Human Tagged ORF Clone
Tag:	Myc-DDK
Symbol:	ZNF610
Mammalian Cell Selection:	Neomycin
Vector:	pCMV6-Entry (PS100001)
E. coli Selection:	Kanamycin (25 ug/mL)



[View online »](#)

ORF Nucleotide  
Sequence:

>RC228908 ORF sequence  
Red=Cloning site Blue=ORF Green=Tags(s)

TTTTGTAATACGACTCACTATAGGGCGGCCGGAATTCGTCGACTGGATCCGGTACCGAGGAGATCTGCC  
GCCGCGATCGCC

ATGCTATGTGATGAAGAAGCCAGAAGAGGAAAGCAAAGGAGTCAGGGATGGCTTCTCTCAGGGACGCT  
TGACATTCATGGACGTGGCCATCGAATTCTCTCAGGAGGAGTGGAAATCCCTGGACCCTGGACAGAGGGC  
TTTATACAGGGACGTGATGTTGGAGAAGCTACAGGAACCTGGTCTTTCTGGGAATCTGTCTTCTGACCTA  
AGTATTATTTCCATGTTGAAGCAAAGGAGAGAGCCCTTGATTCTGCAAAGTCAAGTAAAAATAGTAAAA  
ATACAGATGGAAGGGAATGTGTCAGAAGCGTGAACACAGGGAGGAGCTGTGTATTGGGAAGCAATGCAGA  
AAACAAGCCTATAAAAATCAACTTGGATTAACCCTTGAGTCACATCTGTCTGAATTGCAGCTGTTTCAA  
GCCGGAAGGAAAATTTACAGAAGTAATCAAGTTGAAAAGTTTACAACCATCGTTCCTCAGTTCCACCAC  
TTCAAAAAATTTCTTCTAGTTTCAACACACATTTTTAATAAATATAGAAATGATCTTATTGATTTCCC  
ATTACTCCACAAGAAGGAAAGCATACATTAGAGGAAAATCTTATGAATATGAATGTAGTGAAGATGGT  
GAAGTTTTTAGAGTCCCTGCAAGCCTTACTAACCATCAAGTAATCCATACCGCAGAGAAAACCTTACAAT  
GTACTGAATGTGGCAAGGTCTTCAGTCGCAATTCACACCTTGTAGAATTTGGAGAATTCATACTGGACA  
GAAGCCTTACAAATGTAGTGAATGTGACAAGGTGTTAATCGCAATTCAAACCTTGCACGACATCAAAGA  
ATTCATACTGGAGAGAAGCCTCACAAATGTAACGAATGTGGCAAAGCTTTTAGAGAGTGTTCAGGACTTA  
CTACCCATCTTGTAAATCCATACTGGAGAGAAAACCTTACAAATGTAATGAGTGTGGCAAGAAGCTTCAGGCA  
CAAATTTTCTCTAACCAATCATCAGAGAAGTCAACGGCGGAAAAACCTTACAAATGTAATGAATGTGGC  
AAGGTCTTAGTCTGCTTTCATACCTTGCACGGCATCAAATAATTCATAGTACAGAGAAGCCCTACAAAT  
GTAACGAATGTGGAAGAGCATTTCACAAGCGTCCGGGCTTATGGCCCATCTTCTAATCCATACTGGAGA  
GAAACCTTACAAATGTAATGAATGTGACAAAGTCTTTGGGCGCAAATTATACCTAACCAACCATCAGAGA  
ATTCATACTGGAGAGAGACCTTACAAGTGAATGCATGTGGCAAGGTCTTCAATCAAAATCCACACCTTT  
CACGACATCGGAAAATTCATGCTGGAGAGAATTCACTGCGTACCTTACAGATGGAA

ACGCGTACGCGGCCGCTCGAGCAGAAACTCATCTCAGAAGAGGATCTGGCAGCAAATGATATCCTGGATT  
ACAAGGATGACGACGATAAGGTTTAA

## Protein Sequence:

>RC228908 protein sequence  
Red=Cloning site Green=Tags(s)

MLCDEEAQKRKAKESGMALPQGRLTFMDVAIEFSQEEWKSLDPGQRALYRDVMLENYRNLVFLGICLPDL  
SIIISMLKQRREPLILQSQVKIVKNTDGRECVRSVNTGRSCVLGSNAENKPIKNQLGLTLESHLSELQLFQ  
AGRKIYRSNQVEKFTNHRSSVSPLQKISSSFTTHIFNKYRNDLIDFLLPQEEKAYIRGKSYEYECSEDG  
EVFRVPASLTNHQVIHTAEKPYKCTECGKVF SRNSHLVEHWRIHTGQKPYKCSECDKVFNRNSNLARHQR  
IHTGEKPHKCNCEGKAFRECSGLTTHLVIHTGEKPYKCNCEGKNFRHKFSLTNHQRSHTAEKPYKCNCEG  
KVFSLLSYLARHQI IHSTKPYKCNCEGRAFHKRPGLMAHLLIHTGEKPYKCNCECDKVFGRKLYLTNHQR  
IHTGERPYKCNACGKVFNQPHLSRHRKI HAGENSLRTLQME

TRTRPLEQKLISEEDLAANDILDYKDDDDKV

## Chromatograms:

[https://cdn.origene.com/chromatograms/mk6367\\_h12.zip](https://cdn.origene.com/chromatograms/mk6367_h12.zip)

## Restriction Sites:

Sgfl-Mlul

**Cloning Scheme:**


**ACCN:** NM\_001161425

**ORF Size:** 1386 bp

**OTI Disclaimer:** The molecular sequence of this clone aligns with the gene accession number as a point of reference only. However, individual transcript sequences of the same gene can differ through naturally occurring variations (e.g. polymorphisms), each with its own valid existence. This clone is substantially in agreement with the reference, but a complete review of all prevailing variants is recommended prior to use. [More info](#)

**OTI Annotation:** This clone was engineered to express the complete ORF with an expression tag. Expression varies depending on the nature of the gene.

**Components:** The ORF clone is ion-exchange column purified and shipped in a 2D barcoded Matrix tube containing 10ug of transfection-ready, dried plasmid DNA (reconstitute with 100 ul of water).

**Reconstitution Method:**

1. Centrifuge at 5,000xg for 5min.
2. Carefully open the tube and add 100ul of sterile water to dissolve the DNA.
3. Close the tube and incubate for 10 minutes at room temperature.
4. Briefly vortex the tube and then do a quick spin (less than 5000xg) to concentrate the liquid at the bottom.
5. Store the suspended plasmid at -20°C. The DNA is stable for at least one year from date of shipping when stored at -20°C.

**RefSeq:** [NM\\_001161425.1](#), [NP\\_001154897.1](#)

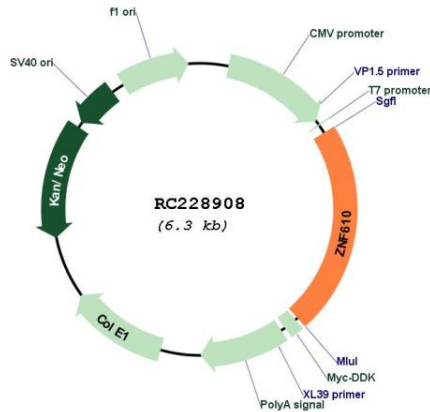
**RefSeq Size:** 2272 bp

**RefSeq ORF:** 1389 bp

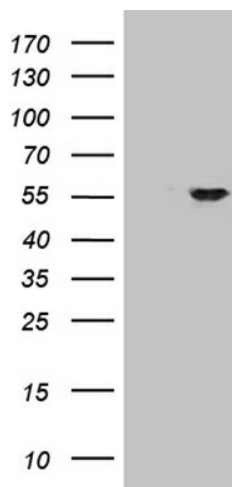
**Locus ID:** 162963

**UniProt ID:** [Q8N9Z0](#)

**Cytogenetics:** 19q13.41  
**Protein Families:** Transcription Factors  
**MW:** 53.4 kDa  
**Gene Summary:** May be involved in transcriptional regulation.[UniProtKB/Swiss-Prot Function]

**Product images:**


Circular map for RC228908



HEK293T cells were transfected with the pCMV6-ENTRY control (Cat# [PS100001], Left lane) or pCMV6-ENTRY ZNF610 (Cat# RC228908, Right lane) cDNA for 48 hrs and lysed. Equivalent amounts of cell lysates (5 ug per lane) were separated by SDS-PAGE and immunoblotted with anti-ZNF610(Cat# [TA810993]) (Cat# [TA810993]) (1:500).