

Product datasheet for **RC228894**

SLC37A4 (NM_001164277) Human Tagged ORF Clone

Product data:

Product Type:	Expression Plasmids
Product Name:	SLC37A4 (NM_001164277) Human Tagged ORF Clone
Tag:	Myc-DDK
Symbol:	SLC37A4
Synonyms:	G6PT1; G6PT2; G6PT3; GSD1b; GSD1c; GSD1d; PRO0685; TRG-19; TRG19
Mammalian Cell Selection:	Neomycin
Vector:	pCMV6-Entry (PS100001)
E. coli Selection:	Kanamycin (25 ug/mL)



[View online »](#)

ORF Nucleotide Sequence:

>RC228894 representing NM_001164277
 Red=Cloning site Blue=ORF Green=Tags(s)

TTTTGTAATACGACTCACTATAGGGCGGCCGGAATTCGTCGACTGGATCCGGTACCGAGGAGATCTGCC
 GCC**CGGATCGCC**

ATGGCAGCCCAGGGCTATGGCTATTATCGCACTGTGATCTTCTCAGCCATGTTTGGGGGCTACAGCCTGT
 ATTACTTCAATCGCAAGACCTTCTCCTTTGTCATGCCATCATTGGTGGAAGAGATCCCTTTGGACAAGGA
 TGATTTGGGGTTCATCACCAGCAGCCAGTCGGCAGCTTATGCTATCAGCAAGTTTGTGAGTGGGGTCTG
 TCTGACCAGATGAGTGTCTGCTGGCTCTTCTTCTGGGCTGCTCCTGGTTGGCCTGGTCAACATATTCT
 TTGCTGGAGCTCCACAGTACCTGTCTTTGCTGCCCTCTGGTTCCCTAATGGCCTGGCCAGGGGCTGGG
 CTGGCCCCATGTGGGAAGTCTGCGGAAGTGGTTTGGCCATCTCAGTTTGGCACTTGGTGGCCATC
 CTGTCAACCAGCATGAACCTGGCTGGAGGGCTGGGCCATCCTGGCAACCATCCTTGGCCAGAGCTACA
 GCTGGCGCAGCAGCTGGCCCTATCTGGGGCAGTGTGTGGTTGTCTCCTTCTGTCTCTCTGCTCAT
 CCACAATGAACCTGCTGATGTTGGACTCCGCAACCTGGACCCCATGCCCTCTGAGGGCAAGAAGGGCTCC
 TTGAAGGAGGAGAGCACCTGCAGGAGCTGCTGCTGTCCCTTACCTGTGGGTGCTCTCCACTGGTTACC
 TTGTGGTGTGGAGTAAAGACCTGCTGTACTGACTGGGGCCAGTTCTTCTTATCCAGGAGAAAGGACA
 GTCAGCCCTTGTAGGTAGCTCCTACATGAGTGCCTGGAAGTTGGGGGCCTTGTAGGCAGCATCGCAGCT
 GGCTACCTGTCAGACCGGCCATGGCAAAGCGGGACTGTCCAACACGGGAACCCTCGCCATGGCTGT
 TGCTGTTGATGATGGCTGGCATGACAGTGTCCATGTACCTTCCGGGTAAACAGTGACCAGTGACTCCCC
 CAAGCTCTGGATCCTGGTATTGGGAGCTGATTTGGTTTCTCCTCGATGGCCCCATTGCCCTGTTTGA
 GTCATAGCCAACGAGAGTGCCCTCCCAACTTGTGTGGCACCTCCACGCCATTGTGGGACTCATGGCCA
 ATGTGGGCGGCTTTCTGGCTGGGCTGCCCTTACGACCATTGCCAAGCACTACAGTTGGAGCACAGCCTT
 CTGGGTGGCTGAAGTGATTTGTGCGGCCAGCACGGCTGCCTTCTCTCTCTACGAAACATCCGCACCAAG
 ATGGGCCGAGTGTCCAAGAAGGCTGAG

ACGCGTACGCGGCCGCTCGAGCAGAACTCATCTCAGAAGAGGATCTGGCAGCAAATGATATCCTGGATT
 ACAAGGATGACGACGATAAGGTTTAA

Protein Sequence:

>RC228894 representing NM_001164277
 Red=Cloning site Green=Tags(s)

MAAQGYGYRTVIFSAMFGGYSLYYFNKTFVMPVSLVEEIPLDKDDLGFITSSQSAAYAISKFVSGVL
 SDQMSARWLFSSGLLLVGLVNIFFAWSSTVPVFAALWFLNGLAQGLGWPPCGKVLKWFEPQFQGTWWAI
 LSTSMNLAGGLGPILATILAQSYSWRSTLALSGALCVVVSFLCLLLIHNEPADVGLRNLDPMPSEGKKS
 LKEESTLQELLLSPYLWVLTGTYLVVFGVKTCCDWDGQFFLIQEKQSALVGSSYMSALEVGGLVGSI
 AAYLSDRAMAKAGLSNYGNPRHLLLFMMAGMTVSMYLFRTVTSDSPKLWILVLGAVFGFSSYGPIALFG
 VIANESAPPNLCGTSHAIVGLMANVGGFLAGLPFSTIAKHYSWSTAFWVAEVICAASTAAFFLLRNIRTK
 MGRVSKKAE

TRTRPLEQKLISEEDLAANDILDYKDDDDKV

Chromatograms:

https://cdn.origene.com/chromatograms/mg3108_f10.zip

Restriction Sites:

Sgfl-Mlul

Cloning Scheme:



ACCN: NM_001164277

ORF Size: 1287 bp

OTI Disclaimer: The molecular sequence of this clone aligns with the gene accession number as a point of reference only. However, individual transcript sequences of the same gene can differ through naturally occurring variations (e.g. polymorphisms), each with its own valid existence. This clone is substantially in agreement with the reference, but a complete review of all prevailing variants is recommended prior to use. [More info](#)

OTI Annotation: This clone was engineered to express the complete ORF with an expression tag. Expression varies depending on the nature of the gene.

Components: The ORF clone is ion-exchange column purified and shipped in a 2D barcoded Matrix tube containing 10ug of transfection-ready, dried plasmid DNA (reconstitute with 100 ul of water).

Reconstitution Method:

1. Centrifuge at 5,000xg for 5min.
2. Carefully open the tube and add 100ul of sterile water to dissolve the DNA.
3. Close the tube and incubate for 10 minutes at room temperature.
4. Briefly vortex the tube and then do a quick spin (less than 5000xg) to concentrate the liquid at the bottom.
5. Store the suspended plasmid at -20°C. The DNA is stable for at least one year from date of shipping when stored at -20°C.

RefSeq: [NM_001164277.1](#), [NP_001157749.1](#)

RefSeq ORF: 1290 bp

Locus ID: 2542

UniProt ID: [O43826](#)

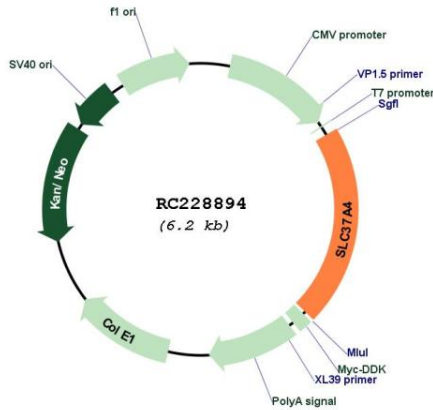
Cytogenetics: 11q23.3

Protein Families: Transmembrane

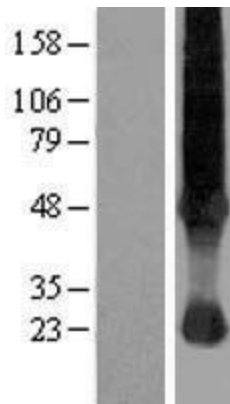
MW: 46.2 kDa

Gene Summary: This gene regulates glucose-6-phosphate transport from the cytoplasm to the lumen of the endoplasmic reticulum, in order to maintain glucose homeostasis. It also plays a role in ATP-mediated calcium sequestration in the lumen of the endoplasmic reticulum. Mutations in this gene have been associated with various forms of glycogen storage disease. Alternative splicing in this gene results in multiple transcript variants.[provided by RefSeq, Aug 2009]

Product images:



Circular map for RC228894



Western blot validation of overexpression lysate (Cat# [LY431922]) using anti-DDK antibody (Cat# [TA50011-100]). Left: Cell lysates from untransfected HEK293T cells; Right: Cell lysates from HEK293T cells transfected with RC228894 using transfection reagent MegaTran 2.0 (Cat# [TT210002]).