

Product datasheet for **RC228886**

BZW2 (NM_001159767) Human Tagged ORF Clone

Product data:

Product Type:	Expression Plasmids
Product Name:	BZW2 (NM_001159767) Human Tagged ORF Clone
Tag:	Myc-DDK
Symbol:	BZW2
Synonyms:	HSPC028; MST017; MSTP017
Mammalian Cell Selection:	Neomycin
Vector:	pCMV6-Entry (PS100001)
E. coli Selection:	Kanamycin (25 ug/mL)
ORF Nucleotide Sequence:	>RC228886 ORF sequence Red=Cloning site Blue=ORF Green=Tags(s)

TTTTGTAATACGACTCACTATAGGGCGCCGGGAATTCGTCGACTGGATCCGGTACCGAGGAGATCTGCC
GCC**CGATCGCC**

ATGAATAAGCATCAGAAGCCAGTGCTAACAGGCCAGCGTTCAAACCTCGGAAAAGGGATGAAAAAGAGA
AATTCGAACCCACAGTCTTCAGGGATACACTTGTCCAGGGGCTTAATGAGGCTGGTGATGACCTTGAAGC
TGTAGCCAAATTTCTGGACTCTACAGGCTCAAGATTAGATTATCGTCGCTATGCAGACACACTCTTCGAT
ATCCTGGTGGCTGGCAGTATGCTTGCCCTGGAGGAACCGCATAGATGATGGTGACAAGACCAAGATGA
CCAACCACTGTGTGTTTTAGCAATGAAGATCATGAAACCATCCGAACTATGCTCAGGCTTCAATAA
ACTCATCAGGAGATATAAGTATTTGGAGAAGGCATTTGAAGATGAAATGAAAAGCTTCTCTCTTCTT
AAAGCCTTTTCCGAAACAGAGCAGACAAAGTTGGCGATGCTGTCCGGGATTCTGCTGGGCAATGGCACCC
TGCCCGCCACCATCCTCACCAGTCTCTTACCAGCAGCTTAGTCAAAGAAGGCATTGCGGCCTCATTGTC
TGTCAGCTTTTCAAAGCATGGATGGCAGAAAAAGATGCCAACTCTGTTACCTCGTCTTTGAGAAAAGCC
AACTTAGACAAGAGGCTGCTTGAAGTCTTCCAGTTAACAGACAGAGTGTGGATCATTTTGTAAATACT
TCACTGACGCAGGTCTTAAGGAGCTTCCGACTTCTCCGAGTCCAGCAGTCCCTGGGCACCAGGAAGGA
ACTGCAGAAGGAGCTCCAGGAGCGTCTTCTCAGGAATGCCGATCAAGGAGGTGGTGTATATGTCAA
GAAGAAATGAAGAGGAATGATCTTCCAGAAACAGCAGTATTGGTCTTCTGTGGACATGTATAATGAACG
CTGTTGAGTGGAACAAGAAGGAAGAACTTGTGCAGAGCAGGCTCTGAAGCACCTGAAGCAATATGCTCC
CCTGCTGGCCGTGTTAGCTCCCAAGGCCAGTCAGAGCTGATCCTCCTCCAGAAGTTCCAGAACTGCTGC
TACGACAACATCCATTTTCAAGGCTTTTCAAGAGATTGTTGTTCTCTTTTATAAAGCTGATGTTCTGA
GCGAAGAAGCAATACTGAAATGGTATAAGGAAGCACATGTTGCTAAAGGCAAAAGTGTTTTTCTTGACCA
GATGAAGAAATTTGTTGAGTGTTACAAAATGCAGAAGAAGAATCCGAATCGGAAGGTGAGGAAAAT

ACGCGTACGCGGCCGCTCGAGCAGAACTCATCTCAGAAGAGGATCTGGCAGCAAATGATATCTGGATT
ACAAGGATGACGACGATAAGGTTTAA



[View online »](#)

Protein Sequence: >RC228886 protein sequence
Red=Cloning site Green=Tags(s)

MNKHQKPVLTGQRFKTRKRDEKEKFEPTVFRDTLVQGLNEAGDDLEAVAKFLDSTGSRLDYRRYADTLFD
 ILVAGSMLAPGGTRIDGDKTKMTNHCVFSANEDHETIRNYAQVFNKLIIRRYKYLEKAFEDEMKLLFL
 KAFSETEQTKLAMLSGILLGNGTLPATILTSLFTDSLVEKGI AASFVKLFKAWMAEKDANSVTSSLRKA
 NLDKRLLELFPVNRQSVDFHAKYFTDAGLKEKLSDFLRVQQLGTRKELQKELQERLSQECPIKEVLYVK
 EEMKRNDLPETA VIGLLWTCIMNAVEWNKKEELVAEQALKHLKQYAPLLAVFSSQSQSELILLQKVQEYC
 YDNIHFMAFKQIVVLFYKADVLSEEAILKWKYEAHVAKGKSVFLDQMKKFVEWLQNAEEEESEGEEN

TRTRPLEQKLISEEDLAANDILDYKDDDDKV

Chromatograms: https://cdn.origene.com/chromatograms/mk6569_c12.zip

Restriction Sites: SgfI-MluI

Cloning Scheme:



ACCN: NM_001159767

ORF Size: 1257 bp

OTI Disclaimer: The molecular sequence of this clone aligns with the gene accession number as a point of reference only. However, individual transcript sequences of the same gene can differ through naturally occurring variations (e.g. polymorphisms), each with its own valid existence. This clone is substantially in agreement with the reference, but a complete review of all prevailing variants is recommended prior to use. [More info](#)

OTI Annotation: This clone was engineered to express the complete ORF with an expression tag. Expression varies depending on the nature of the gene.

Components: The ORF clone is ion-exchange column purified and shipped in a 2D barcoded Matrix tube containing 10ug of transfection-ready, dried plasmid DNA (reconstitute with 100 ul of water).

Reconstitution Method:

1. Centrifuge at 5,000xg for 5min.
2. Carefully open the tube and add 100ul of sterile water to dissolve the DNA.
3. Close the tube and incubate for 10 minutes at room temperature.
4. Briefly vortex the tube and then do a quick spin (less than 5000xg) to concentrate the liquid at the bottom.
5. Store the suspended plasmid at -20°C. The DNA is stable for at least one year from date of shipping when stored at -20°C.

RefSeq: [NM_001159767.1](#), [NP_001153239.1](#)

RefSeq Size: 1883 bp

RefSeq ORF: 1260 bp

Locus ID: 28969

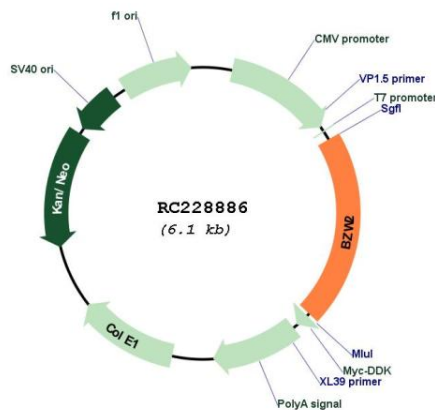
UniProt ID: [Q9Y6E2](#)

Cytogenetics: 7p21.1

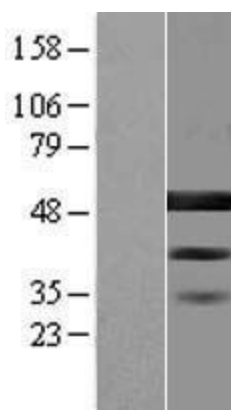
MW: 48.2 kDa

Gene Summary: May be involved in neuronal differentiation.[UniProtKB/Swiss-Prot Function]

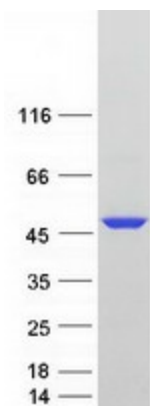
Product images:



Circular map for RC228886



Western blot validation of overexpression lysate (Cat# [LY431914]) using anti-DDK antibody (Cat# [TA50011-100]). Left: Cell lysates from untransfected HEK293T cells; Right: Cell lysates from HEK293T cells transfected with RC228886 using transfection reagent MegaTran 2.0 (Cat# [TT210002]).



Coomassie blue staining of purified BZW2 protein (Cat# [TP328886]). The protein was produced from HEK293T cells transfected with BZW2 cDNA clone (Cat# RC228886) using MegaTran 2.0 (Cat# [TT210002]).