

Product datasheet for RC228878

CANT1 (NM_001159772) Human Tagged ORF Clone

Product data:

Product Type:	Expression Plasmids
Product Name:	CANT1 (NM_001159772) Human Tagged ORF Clone
Tag:	Myc-DDK
Symbol:	CANT1
Synonyms:	DBQD; DBQD1; EDM7; SCAN-1; SCAN1; SHAPY
Mammalian Cell Selection:	Neomycin
Vector:	pCMV6-Entry (PS100001)
E. coli Selection:	Kanamycin (25 ug/mL)
ORF Nucleotide Sequence:	>RC228878 ORF sequence Red=Cloning site Blue=ORF Green=Tags(s)

TTTTGTAATACGACTCACTATAGGGCGGCCGGAATTCGTCGACTGGATCCGGTACCGAGGAGATCTGCC
GCC**CGATCGCC**

ATGCCCGTGCAGCTGTCTGAGCACCCGGAATGGAATGAGTCTATGCACTCCCTCCGGATCAGTGTGGGG
GCCTTCTGTGTGGCGTCCATGACCAAGGCCGCGGACCCCGCTTCCGCCCCCGCTGGAAGGTGATCCT
GACGTTCTTTGTGGGTGCTGCCATCCTCTGGTCTGTCTCCACCGCCCGGCCCGGACGGCCCCC
ACCCACAATGCACAACTGGAGGCTCGGCCAGGCGCCGCAACTGGTACAATGACACCTACCCCTGT
CTCCCCACAAGGACACCGGCTGGGATTCGGTATCGAATCGCAGTTATCGCAGACCTGGACACAGAGTC
AAGGGCCCAAGAGGAAAACACCTGGTTCAGTTACCTGAAAAGGGCTACCTGACCCTGTCAGACAGTGGG
GACAAGGTGGCCGTGGAATGGGACAAAGACCATGGGGTCTGGAGTCCCACCTGGCGGAGAAGGGGAGAG
GCATGGAGCTATCCGACCTGATTGTTTTCAATGGGAACTCTACTCCGTGGATGACCGGACGGGGTTCGT
CTACCAGATCGAAGGCAGCAAAGCCGTGCCCTGGGTGATTCTGTCCGACGGCGACGGCACCGTGGAGAAA
GGCTTCAAGGCCGAATGGCTGGCAGTGAAGGACGAGCGTCTGTACGTGGGCGGCTGGGCAAGGAGTGG
CGACCACTACGGGTGATGTGGTGAACGAGAACCCGGAGTGGGTGAAGGTGGTGGCTACAAGGCACGCT
GGACCACGAGAAGTGGGTGTCCTCAACTACAACGCCCTGCGGGCTGCTGCCGGCATCCAGCCGCCAGGCTAC
CTCATCCATGAGTCTGCCTGCTGGAGTGACACGCTGCAGCGCTGGTTCCTCTGCCGCGCCGCGCCAGC
AGGAGCGCTACAGCGAGAAGGACGACGAGCGCAAGGGCGCCAACCTGCTGCTGAGCGCTCCCTGACTT
CGGCGACATCGCTGTGAGCCACGTCGGGGCGGTGGTCCCCACTCACGGTTCCTGTCCTTCAAGTTCATC
CCCAACACCGACGACGACGATCATTGTGGCCCTCAAATCCGAGGAGGACAGCGGCAGAGTCGCTCCTACA
TCATGGCCTTACGCTGGACGGCGCTTCTGTTGCCGGAGACCAAGATCGGAAGCGTGAATACGAAGG
CATCGAGTTCATT

ACGCGTACGCGGCCGCTCGAGCAGAACTCATCTCAGAAGAGGATCTGGCAGCAAATGATATCCTGGATT
ACAAGGATGACGACGATAAGGTTTAA



Protein Sequence: >RC228878 protein sequence
Red=Cloning site Green=Tags(s)

MPVQLSEHPEWNESMHLRISVGGLPVLASMTKAADPRFRPRWKVILTFVGAAILWLLCSHRPAPGRPP
 THNAHNWRLGQAPANWYNDTYPLSPPQRTAGIRYRIAVIADLDESRAQEENTWFSYLKKGYLTLSDSG
 DKVAVEWDKDHGVLESHLAEKGRGMEISDLIVFNGKLYSVDRTGVVYQIEGSKAVPWVILSDGDGTVEK
 GKFAEWLAVKDERLYVGGLGKEWTTTTGDVVNENPEWVKVVGKGSVDHENWVSNYNALRAAGIQPPGY
 LIHESACWSDTLQRWFFLPRRASQERYSEKDDERKGANLLL SASPDFGDI AVSHVAVVPTHGFSSEFKFI
 PNTDDQIIIVALKSEEDSGRVASYIMAFITLDGRFLLPETKIGSVKYEIEFI

TRTRPLEQKLISEEDLAANDILDYKDDDDKV

Chromatograms: https://cdn.origene.com/chromatograms/mk6308_f03.zip

Restriction Sites: SgfI-MluI

Cloning Scheme:



* The last codon before the Stop codon of the ORF

ACCN: NM_001159772

ORF Size: 1203 bp

OTI Disclaimer: The molecular sequence of this clone aligns with the gene accession number as a point of reference only. However, individual transcript sequences of the same gene can differ through naturally occurring variations (e.g. polymorphisms), each with its own valid existence. This clone is substantially in agreement with the reference, but a complete review of all prevailing variants is recommended prior to use. [More info](#)

OTI Annotation: This clone was engineered to express the complete ORF with an expression tag. Expression varies depending on the nature of the gene.

Components: The ORF clone is ion-exchange column purified and shipped in a 2D barcoded Matrix tube containing 10ug of transfection-ready, dried plasmid DNA (reconstitute with 100 ul of water).

Reconstitution Method:

1. Centrifuge at 5,000xg for 5min.
2. Carefully open the tube and add 100ul of sterile water to dissolve the DNA.
3. Close the tube and incubate for 10 minutes at room temperature.
4. Briefly vortex the tube and then do a quick spin (less than 5000xg) to concentrate the liquid at the bottom.
5. Store the suspended plasmid at -20°C. The DNA is stable for at least one year from date of shipping when stored at -20°C.

RefSeq: [NM_001159772.2](#)

RefSeq Size: 3489 bp

RefSeq ORF: 1206 bp

Locus ID: 124583

UniProt ID: [Q8WVQ1](#)

Cytogenetics: 17q25.3

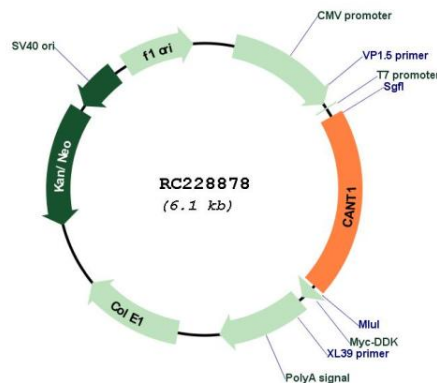
Protein Families: Secreted Protein

Protein Pathways: Purine metabolism, Pyrimidine metabolism

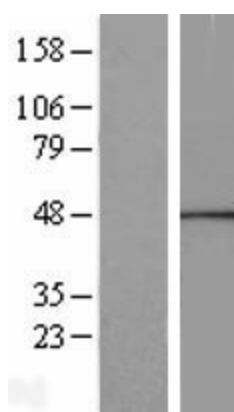
MW: 44.8 kDa

Gene Summary: This protein encoded by this gene belongs to the apyrase family. It functions as a calcium-dependent nucleotidase with a preference for UDP. Mutations in this gene are associated with Desbuquois dysplasia with hand anomalies. Alternatively spliced transcript variants have been noted for this gene.[provided by RefSeq, Mar 2010]

Product images:



Circular map for RC228878



Western blot validation of overexpression lysate (Cat# [LY431907]) using anti-DDK antibody (Cat# [TA50011-100]). Left: Cell lysates from untransfected HEK293T cells; Right: Cell lysates from HEK293T cells transfected with [RC228879] using transfection reagent MegaTran 2.0 (Cat# [TT210002]).