

Product datasheet for **RC228877**

GM CSF Receptor alpha (CSF2RA) (NM_001161529) Human Tagged ORF Clone

Product data:

Product Type:	Expression Plasmids
Product Name:	GM CSF Receptor alpha (CSF2RA) (NM_001161529) Human Tagged ORF Clone
Tag:	Myc-DDK
Symbol:	GM CSF Receptor alpha
Synonyms:	alphaGMR; CD116; CDw116; CSF2R; CSF2RAX; CSF2RAY; CSF2RX; CSF2RY; GM-CSF-R-alpha; GMCSFR; GMCSFR-alpha; GMR; GMR-alpha; SMDP4
Mammalian Cell Selection:	Neomycin
Vector:	pCMV6-Entry (PS100001)
E. coli Selection:	Kanamycin (25 ug/mL)



[View online »](#)

ORF Nucleotide Sequence:

>RC228877 ORF sequence
 Red=Cloning site Blue=ORF Green=Tags(s)

TTTTGTAATACGACTCACTATAGGGCGGCCGGAATTCGTCGACTGGATCCGGTACCGAGGAGATCTGCC
 GCC**CGCATCGCC**

ATGCTTCTCCTGGTGACAAGCCTTCTGCTCTGTGAGTTACCACACCCAGCATTCTCCTGATCCCAGAGA
 AATCGGATCTGCGAACAGTGGCACCAGCCTCTAGTCTCAATGTGAGGTTTGACTCCAGGACGATGAATTT
 AAGCTGGGACTGCCAAGAAAACACAACCTTCAGCAAGTGTTCCTTAAGTACAAGAAAGACAGAGTCGTG
 GAACCCAGGCTCAGTAACAACGAATGTTCTGTCACATTTCTGAAATTTGTCTGCATGAAGGAGTACAT
 TTGAGGTTACGTGAATACTAGTCAAAGAGGATTTCAACAGAACTGCTTTATCCAAATTCAGGAAGGGA
 GGGTACCGCTGCTCAGAATTTCTCTGTTTCATCTACAATGCGGATTTAATGAACGTACCTGGCGGAGG
 GGTCCGACGGCCCCCGTACGTCCAGTATTTTTGTACATACGAACTCAAAGAGAAGGAGGGAGATCC
 GGTGTCCTTATTACATAAAGACTCAGGAACCCATGTGGGATGTCACCTGGATAACCTGTCAGGATTAAC
 ATCTCGCAATTACTTTCTGGTTAACGGAACCCAGCCGAGAAATGGCATCCAATTCCTTTGATTCATTTTTG
 GACACAAAAGAAAATAGAAGATTCAACCTCCAGCAATGTCACCGTACGTTGCAACACGACGCACTGCC
 TCGTACGGTGAAACAGCCCAGGACCTATCAGAAGCTGTCGTACCTGGACTTTCAGTACCAGCTGGACGT
 CCACAGAAAGAATACCCAGCCTGGCAGGAAAACCTACTGATTAATGTTTCTGGTGATTTGGAAAATAGA
 TACAATTTCCAAGCTCTGAGCCAGAGCAAAACAGTGTGAAGATCAGAGCTGCAGACGTCGCCATCT
 TGAATTGGAGCTCCTGGAGTGAAGCCATTGAATTTGGTTCTGACGACGGGAACCTCGGCTCTGTGTACAT
 TTATGTCTCCTAATCGTAGGAACCTTGCTGTGGCATCGTCTCGGCTTCTCTTTAAAAGGTTCTT
 AGGATACAGCGGCTGTTCCACAGTCCACAGATCAAAGACAACTGAATGATAACCATGAGGTGGAAG
 ACGAGATCATCTGGGAGGAATTCACCCAGAGGAAGGGAAGGCTACCGCGAAGAGGTCTTGACCGTGAA
 GGAAATTACC

ACGCGTACGCGGCCGCTCGAGCAGAACTCATCTCAGAAGAGGATCTGGCAGCAATGATATCCTGGATT
 ACAAGGATGACGACGATAAGGTTTAA

Protein Sequence:

>RC228877 protein sequence
 Red=Cloning site Green=Tags(s)

MLLLVTSLLLCELPHPAFLLIPEKSDLRTVAPASSLNVRFDSTMNLSWDCQENTTFSKCFLTDKKNRVV
 EPRLSNNECSCTFREICLHEGVTFEVHVNTSQRGFQKLLYPNSGREGTAAQNFSCFIYNADLMNCTWAR
 GPTAPRDVQYFLYIRNSKRRREIRCPYYIQDSGTHVGHLDNL SGLTSRNYFLVNGTSREIGIQFFDSSL
 DTKKIERFNPPSNVTVRCNTTHCLVRWKQPRTYQKLSYLDYQYQLDVHRKNTQPGTENLLINVSGLLENR
 YNFPSSPRAKHSVKIRAADVRIILNWSWSEAIEFGSDDGNLGSVYIYVLLIVGTLVCGIIVLGLFKRFL
 RIQRLFPVPQIKDKLNDNHEVEDEIIWEEFTPEEGKGYREEVLTVKEIT

TRTRPLEQKLISEEDLAANDILDYKDDDDKV

Chromatograms:

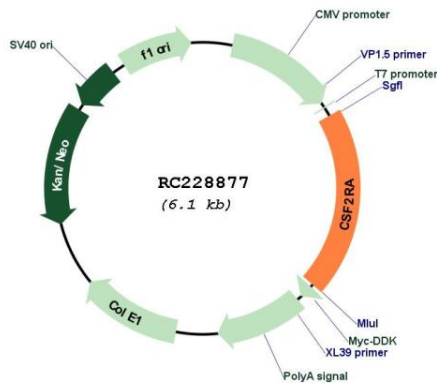
https://cdn.origene.com/chromatograms/mk6669_a06.zip

Restriction Sites:

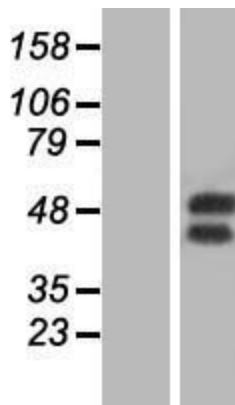
Sgfl-Mlul

Cytogenetics:	X;Y
Protein Families:	Druggable Genome, Secreted Protein, Transmembrane
Protein Pathways:	Cytokine-cytokine receptor interaction, Hematopoietic cell lineage, Jak-STAT signaling pathway, Pathways in cancer
MW:	46.2 kDa
Gene Summary:	The protein encoded by this gene is the alpha subunit of the heterodimeric receptor for colony stimulating factor 2, a cytokine which controls the production, differentiation, and function of granulocytes and macrophages. The encoded protein is a member of the cytokine family of receptors. This gene is found in the pseudoautosomal region (PAR) of the X and Y chromosomes. Multiple transcript variants encoding different isoforms have been found for this gene, with some of the isoforms being membrane-bound and others being soluble. [provided by RefSeq, Jul 2008]

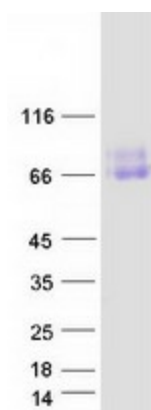
Product images:



Circular map for RC228877



Western blot validation of overexpression lysate (Cat# [LY431905]) using anti-DDK antibody (Cat# [TA50011-100]). Left: Cell lysates from untransfected HEK293T cells; Right: Cell lysates from HEK293T cells transfected with RC228877 using transfection reagent MegaTran 2.0 (Cat# [TT210002]).



Coomassie blue staining of purified CSF2RA protein (Cat# [TP328877]). The protein was produced from HEK293T cells transfected with CSF2RA cDNA clone (Cat# RC228877) using MegaTran 2.0 (Cat# [TT210002]).