

Product datasheet for **RC228874**

EDG8 (S1PR5) (NM_001166215) Human Tagged ORF Clone

Product data:

Product Type:	Expression Plasmids
Product Name:	EDG8 (S1PR5) (NM_001166215) Human Tagged ORF Clone
Tag:	Myc-DDK
Symbol:	EDG8
Synonyms:	Edg-8; EDG8; S1P5; SPPR-1; SPPR-2
Mammalian Cell Selection:	Neomycin
Vector:	pCMV6-Entry (PS100001)
E. coli Selection:	Kanamycin (25 ug/mL)
ORF Nucleotide Sequence:	>RC228874 ORF sequence Red=Cloning site Blue=ORF Green=Tags(s)

TTTTGTAATACGACTCACTATAGGGCGGCCGGAATTCGTCGACTGGATCCGGTACCGAGGAGATCTGCC
GCC**CGATCGCC**

ATGGAGTCGGGGCTGCTGCGGCCGGCGCCGGTGAGCGAGGTCATCGTCCTGCATTACAACACTACCCGGCA
AGCTCCGCGGTGCGCGCTACCAGCCGGTGCCGGCTGCGCGCCGACCCGCGGTGTGCTGGCGGTGTG
CGCCTTTCATCGTCTAGAGAATCTAGCCGTGTTGTTGGTCTCGGACGCCACCCGCGCTTCCACGCTCCC
ATGTTCTGCTCCTGGGAGCCTCACGTTGTGGATCTGCTGGCAGGCGCCGCTACGCCCAACATCC
TACTGTGGGGCCGCTCACGCTGAAACTGTCCCCGCGCTCTGGTTCGCACGGGAGGAGCGCTTCTCGT
GGCACTCACTGCGTCCGTGCTGAGCCTCCTGGCCATCGCGCTGGAGCGCAGCCTCACCATGGCGCGCAGG
GGCCCCGCGCCGCTCCAGTCGGGGGCGCACGCTGGCGATGGCAGCCGCGCCCTGGGGCGTGTGCTGTC
TCTCGGGCTCCTGCCAGCGCTGGGCTGGAATTGCCTGGGTGCGCTGGACGCTTGTCTCACTGTCTTGCC
GCTCTACGCCAAGGCCTACGTGCTCTTCTGCGTCTGCGCTTCTGGGCATCCTGGCCGCGATCTGTGCA
CTCTACGCGCGCATCTACTGCCAGGTACGCGCCAACGCGCGGCGCCTGCCGGCACGGCCCGGACTGCGG
GGACCACCTCGACCCGGGCGCGTCGCAAGCCGCGCTCGCTGGCCTGTGTCGCACGCTCAGCGTGGTGT
CCTGGCCTTTGTGGCATGTTGGGGCCCCCTTCTCTGCTGCTGTGCTCGACGTGGCGTGGCCGGCGCGC
ACCTGTCTGTACTCCTGCAGGCCGATCCCTTCTGGACTGGCCATGGCCAACACTCTGAACCCCA
TCATCTACAGCTCACCACCGGACCTGCGCCACGCGCTCCTGCGCCTGGTCTGCTGCGGACGCCACTC
CTGCGGCAGAGACCCGAGTGGCTCCAGCAGTCGGCGAGCGCGGCTGAGGCTTCCGGGGGCTGCGCCGC
TGCTGCCCGGGCCTTGTGAGGACTTACGCGGCTCGGAGCGCTCATCGCCCCAGCGCAGCGGCTGG
ACACCAGCGGCTCCACAGGCAGCCCGGTGACCCACAGCCCGGACTCTGGTATCAGAACCGGCTGC
AGAC

ACGCGTACGCGGCCGCTCGAGCAGAAACTCATCTCAGAAGAGGATCTGGCAGCAATGATATCCTGGATT
ACAAGGATGACGACGATAAGGTTTAA



[View online »](#)

Protein Sequence: >RC228874 protein sequence
Red=Cloning site Green=Tags(s)

MESGLLRPAPVSEVIVLHNYTGKLRGARYQPGAGLRADAVVCLAVCAFIVLENLAVLLVLRHPRFHAP
 MFLLLGSLTLDLLAGAAAYAANILLSGPLTLKLSPALWFAREGGVFVALTASVLSLLAIALERSLTMARR
 GPAPVSSRGRTLAMAAAAGVSLLLGLLPALGWNCLGRLDACSTVPLPYAKAYVLFVLAFAVGVGILAAICA
 LYARIYCQVRANARRLPARPGTAGTTSTRARRKPRSLALLRTL SVVLLAFVACWGPLFLLLLLLDVACPAR
 TCPVLLQADPFLGLAMANSLLNPIIYTLTNRDLRHALLRLVCCGRHSCGRDPSSGSQASASAAEASGGLRR
 CLPPGLDGSFSGSERSSPQRDGLDTSGSTGSPGAPTAARTLVSEPAAD

TRTRPLEQKLISEEDLAANDILDYKDDDDKV

Chromatograms: https://cdn.origene.com/chromatograms/mk6265_e09.zip

Restriction Sites: SgfI-MluI

Cloning Scheme:



ACCN: NM_001166215

ORF Size: 1194 bp

OTI Disclaimer: The molecular sequence of this clone aligns with the gene accession number as a point of reference only. However, individual transcript sequences of the same gene can differ through naturally occurring variations (e.g. polymorphisms), each with its own valid existence. This clone is substantially in agreement with the reference, but a complete review of all prevailing variants is recommended prior to use. [More info](#)

OTI Annotation: This clone was engineered to express the complete ORF with an expression tag. Expression varies depending on the nature of the gene.

Components: The ORF clone is ion-exchange column purified and shipped in a 2D barcoded Matrix tube containing 10ug of transfection-ready, dried plasmid DNA (reconstitute with 100 ul of water).

Reconstitution Method:

1. Centrifuge at 5,000xg for 5min.
2. Carefully open the tube and add 100ul of sterile water to dissolve the DNA.
3. Close the tube and incubate for 10 minutes at room temperature.
4. Briefly vortex the tube and then do a quick spin (less than 5000xg) to concentrate the liquid at the bottom.
5. Store the suspended plasmid at -20°C. The DNA is stable for at least one year from date of shipping when stored at -20°C.

RefSeq: [NM_001166215.1](#), [NP_001159687.1](#)

RefSeq Size: 2467 bp

RefSeq ORF: 1197 bp

Locus ID: 53637

UniProt ID: [Q9H228](#)

Cytogenetics: 19p13.2

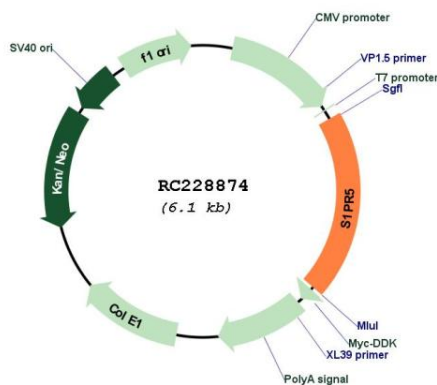
Protein Families: Druggable Genome, GPCR, Transmembrane

Protein Pathways: Neuroactive ligand-receptor interaction

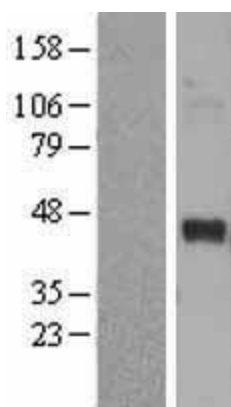
MW: 41.8 kDa

Gene Summary: The lysosphingolipid sphingosine 1-phosphate (S1P) regulates cell proliferation, apoptosis, motility, and neurite retraction. Its actions may be both intracellular as a second messenger and extracellular as a receptor ligand. S1P and the structurally related lysolipid mediator lysophosphatidic acid (LPA) signal cells through a set of G protein-coupled receptors known as EDG receptors. Some EDG receptors (e.g., EDG1; MIM 601974) are S1P receptors; others (e.g., EDG2; MIM 602282) are LPA receptors.[supplied by OMIM, Mar 2008]

Product images:



Circular map for RC228874



Western blot validation of overexpression lysate (Cat# [LY431902]) using anti-DDK antibody (Cat# [TA50011-100]). Left: Cell lysates from untransfected HEK293T cells; Right: Cell lysates from HEK293T cells transfected with RC228874 using transfection reagent MegaTran 2.0 (Cat# [TT210002]).