

Product datasheet for RC228868

SH2D2A (NM_001161444) Human Tagged ORF Clone

Product data:

Product Type:	Expression Plasmids
Product Name:	SH2D2A (NM_001161444) Human Tagged ORF Clone
Tag:	Myc-DDK
Symbol:	SH2D2A
Synonyms:	F2771; SCAP; TSAD; VRAP
Mammalian Cell Selection:	Neomycin
Vector:	pCMV6-Entry (PS100001)
E. coli Selection:	Kanamycin (25 ug/mL)
ORF Nucleotide Sequence:	>RC228868 ORF sequence Red=Cloning site Blue=ORF Green=Tags(s)

TTTTGTAATACGACTCACTATAGGGCGCCGGGAATTCGTCGACTGGATCCGGTACCGAGGAGATCTGCC
GCC**CGATCGC**C

ATGGAGTTCCTCCGCGCCAGATATGTCCCAAGGGAGTCACGAAGCCCCATCCCAACCTTCAGCACCT
TCCAGATCACAGACATGACCCGAGGAGCTGCCAGAACCTGGGCTACACTGCGGCATCTCCCAGGCCCC
GGAGGCTGCCTCCAGCACAGGGAATGCTGAGAGGGCAGAGGAGGTGCCTGGAGAAGGAAGCCTGTTCTG
CAGGCCGAGACCCGGGCTTGTTCCAGAAGACCCAGGCCACTGGCTCCTGCAGCACGGGCAGCCCTG
CCTGGTCCATGGCTTCATCACCCGGAGGGAGGCAGAGAGGCTGCTGGAGCCCAAGCCTCAGGGGTGCTA
CTTGGTGCAGGTTACGCGAGAGCGCGGTGACCTTGGTGTGACTTACAGGAGCCGGACTTGTGCGCCAC
TTCTGCTGGCCAGCTCAGGGACGGGCGCCACGTGGTGTGGGCGAGGACAGCGCCACGCGCGGCTGC
AGGACCTGCTGCTGCACTACACCGCGCACCCGCTCAGCCCTACGGGGAGACGCTCACCGAGCCCTCGC
CCGACAGACTCCTGAGCCTGCAGGACTTCCCTGAGGACCGAAGAATCAAACCTTTGGAAGCAAAGCCAG
GACCCAAACCCAGTACAGCCAATCATCAAACAGGGGCAAGCCCAAGTCCCGATGCAGAAAGAGGGGG
CCGGGGAAGGAGCCCTCCAGCTGCTCAGGCCAAGCCTCCATCCCCGCCAAACCTCAGTGCCTCC
AGAAGTCTACACAATCCCTGTTCCAGCACACCCCGGCCACGCCCAAGCCCTCAAATCCTATCTAC
AATGAGCCTGATGAACCATAGCTTTCTATGCCATGGGCGGGCAGCCCTGGGGAAGCCCAAGCAACA
TCTATGTGGAAGTGAAGATGAGGGCTACCCGCCACCCTTGGGACCCCTGCTACGGAAGAGCTGGT
CAGGCCTGTCCCAGGAGCCAGAATACAGTGGCTCCCAGCTGCATTCTGAGAACTCTGTGATTGGCA
GGCCCTCCCTGCCACCCAGCCCAACCCGCTGGAGACACACCCTCCCCACAATCTTCTAGACAGG
TGCTTCAGGACAGAGGACAGGCATGGCTTCCCCTTGGGCTCCTCAG

ACGGTACGCGGCCGCTCGAGCAGAACTCATCTCAGAAGAGGATCTGGCAGCAATGATATCCTGGATT
ACAAGGATGACGACGATAAGGTTTAA



[View online »](#)

Protein Sequence: >RC228868 protein sequence
Red=Cloning site Green=Tags(s)

MEFPLAQICPQGSHEAPIPTFSTFQITDMTRRSCQNLGYTAASQAPEAASSTGNAERAEEVPGESLFL
 QAETRAWFKQTQAHWLLQHGAAPAWFHGFI TRREAERLLEPKPQGCYL VRFSESAVTFVL TYRSRTCCRH
 FLLAQLRDRGHVVLGEDSAHARLQDLLHYTAHPLSPYGETLTEPLARQTPEPAGLSLRTEESNFGSKSQ
 DPNPQYSPIIKQGQAPVPMQKEGAGEKPSQLLRPKPPIPAKQQLPPEVYTI PVPRHRPAPRPKPSNPIY
 NEPDEPIAFYAMGRGSPGEAPSNIYVEVEDEGLPATLGHVPLRKSWSRPVPGGQNTGGSQ LHSENSVIGQ
 GPPLPHQPPP AWRHTLPHNLSRQVLQDRGQAWLPLGPPQ

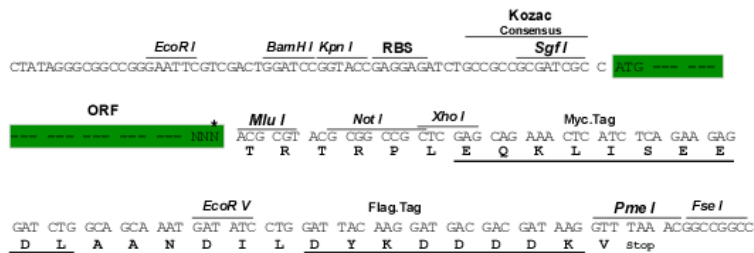
TRTRPLEQKLISEEDLAANDILDYKDDDDKV

Chromatograms: https://cdn.origene.com/chromatograms/mk6430_e07.zip

Restriction Sites: SgfI-MluI

Cloning Scheme:

Cloning sites used for ORF Shuttling:



* The last codon before the Stop codon of the ORF

ACCN: NM_001161444

ORF Size: 1167 bp

OTI Disclaimer: The molecular sequence of this clone aligns with the gene accession number as a point of reference only. However, individual transcript sequences of the same gene can differ through naturally occurring variations (e.g. polymorphisms), each with its own valid existence. This clone is substantially in agreement with the reference, but a complete review of all prevailing variants is recommended prior to use. [More info](#)

OTI Annotation: This clone was engineered to express the complete ORF with an expression tag. Expression varies depending on the nature of the gene.

Components: The ORF clone is ion-exchange column purified and shipped in a 2D barcoded Matrix tube containing 10ug of transfection-ready, dried plasmid DNA (reconstitute with 100 ul of water).

Reconstitution Method:

1. Centrifuge at 5,000xg for 5min.
2. Carefully open the tube and add 100ul of sterile water to dissolve the DNA.
3. Close the tube and incubate for 10 minutes at room temperature.
4. Briefly vortex the tube and then do a quick spin (less than 5000xg) to concentrate the liquid at the bottom.
5. Store the suspended plasmid at -20°C. The DNA is stable for at least one year from date of shipping when stored at -20°C.

RefSeq: [NM_001161444.1](#), [NP_001154916.1](#)

RefSeq Size: 1445 bp

RefSeq ORF: 1170 bp

Locus ID: 9047

UniProt ID: [Q9NP31](#)

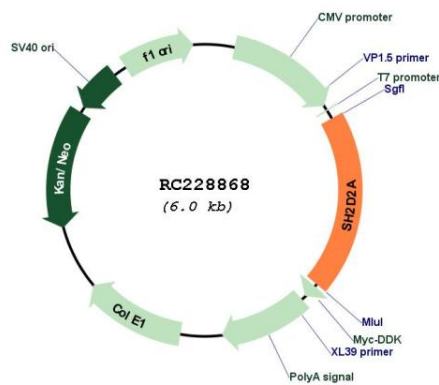
Cytogenetics: 1q23.1

Protein Pathways: VEGF signaling pathway

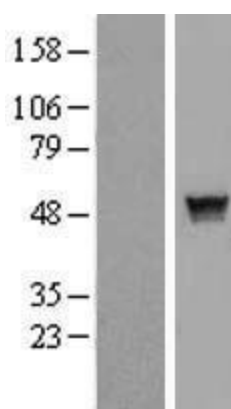
MW: 42.9 kDa

Gene Summary: This gene encodes an adaptor protein thought to function in T-cell signal transduction. A related protein in mouse is responsible for the activation of lymphocyte-specific protein-tyrosine kinase and functions in downstream signaling. Alternative splicing results in multiple transcript variants. [provided by RefSeq, Mar 2010]

Product images:



Circular map for RC228868



Western blot validation of overexpression lysate (Cat# [LY431896]) using anti-DDK antibody (Cat# [TA50011-100]). Left: Cell lysates from untransfected HEK293T cells; Right: Cell lysates from HEK293T cells transfected with RC228868 using transfection reagent MegaTran 2.0 (Cat# [TT210002]).