

Product datasheet for RC228865

MTHFSD (NM_001159377) Human Tagged ORF Clone

Product data:

Product Type:	Expression Plasmids
Product Name:	MTHFSD (NM_001159377) Human Tagged ORF Clone
Tag:	Myc-DDK
Symbol:	MTHFSD
Mammalian Cell Selection:	Neomycin
Vector:	pCMV6-Entry (PS100001)
E. coli Selection:	Kanamycin (25 ug/mL)
ORF Nucleotide Sequence:	>RC228865 representing NM_001159377 Red=Cloning site Blue=ORF Green=Tags(s)

TTTTGTAATACGACTCACTATAGGGCGGCCGGAATTCGTCGACTGGATCCGGTACCGAGGAGATCTGCC
GCC**CGATCGCC**

ATGGAGCCGAGGGCAGTAGGTGTCTCCAAACAGGACATACGTGAACAAATTTGGGGCTACATGGAATCAC
AAAATTTAGCTGACTTTCCCGACCTGTTTCATCACAGGATACCCAACCTTAAGGGTCTTATCTGGCTTG
CCAAAACATCAAAGACCTAGACGTTTTTGGCAGAACACAGGAAGTTAAAGTGGACCCTGATAAACCACTG
GAAGGCGTTCGGCTGCTGGTGTGCAGAGCAAAAAACATTGTTGGTCCAACACCACGACTGAGAACGG
GATTGTTAATAAGATCACACCACCCCTGGGGCACTAAAGACATCTTGAGAAAATGTCCACCTCTCA
GGGTGTGAGGAACTACAGTGTCCCATAGGCTTGGACTCCAGAGTCCTCGTGGATTTAGTTGTGGTGGGA
TCCGTCGCGCTTTCTGAAAAAGGCTGGAGAATCGGGAAGGGAGAAGGCTACGCCGATCTGGAATATGCCA
TGATGGTATCCATGGGCGCCGTGAGCAAGGAGACGCCGGTGGTACCATCGTCCACGACTGCCAGGTCGT
GGACATCCCTGAAGAGCTTGTGAGGAGCAGACATCACTGTGGACTACATCCTCACTCCAACCAGAGTC
ATCGCCACAGGCTGCAAGCGCCAAAGCCAATGGGAATCACCTGGTCAAGATCAGCCTGGAGATGATGG
AGAAAATCCCATACTGAGGAGCCTCCGCGCCGAGAGCAGCAGGCTGGGAAGGATGTCACCTCCAGGG
TGAGCACCAGCACCTCCGGAACCAGGCTGCCAGCAGACAGTCCCCTGAGTGTGGCAGGAGGCCCCCG
GACACACCCGGACCAGAAACCAATTCATGGAGGCAGCCCTGGTCCCCACCAGGGGAGGGTGCCCGC
TTGCAGCCGATGTTACGTTGGGAACCTCCCCGGGACGCCCGTGTGAGTGACCTGAAGAGACCCCTGCG
GGAATCGGCTCCGTGCCCTGCGGCTCACCTGGCAGGGCCCGCGGCGCAGAGCCTTCTCCATTACCCG
GACTCTGCCGAGCCAGCAGGCCGTCTCTGCTTGCAGGGCCTGCGCCTGGGCACCGACACCCTGAGGG
TGGCGCTGGCCAGGCAGCAGAGGGACAAG

ACGCGTACGCGGCCGCTCGAGCAGAACTCATCTCAGAAGAGGATCTGGCAGCAAATGATATCCTGGATT
ACAAGGATGACGACGATAAGGTTTAA



[View online »](#)

Protein Sequence: >RC228865 representing NM_001159377
Red=Cloning site Green=Tags(s)

MEPRAVGVSKQDIREQIWGYMESQNLADFRPVPVHHRIPNFKGSYLACQNIKDLDFVARTQEVKVDPKPL
 EGVRLLVLSKKTLLVPTPRLRTGLFNKITPPPGATKDILRKCATSQGVRNYSVP IGLDSRVLVDL VVVG
 SVAVSEKGRIGKGEYADLEYAMMVSMGAVSKETPVVTVIHDCQVVDIPEELVEEH DITVDYILTPTRV
 IATGCKRPKPMGITWFKISLEMMEKIPIILRSLRAREQQAGKDVTLQGEHQHLEPEPGCQQT VPLSVGRRPP
 DTPGPETNSMEAAPGSPGEGAPLAADVYVGNLPRDARVSDLKRALRELGSVPLRLTWQGP RRRRAFLHYP
 DSAAAQAVSCLQGLRLGTDTLRVALARQQRDK

TRTRPLEQKLISEEDLAANDILDYKDDDDKV

Chromatograms: https://cdn.origene.com/chromatograms/ja1528_b08.zip

Restriction Sites: SgfI-MluI

Cloning Scheme:

Cloning sites used for ORF Shuttling:



* The last codon before the Stop codon of the ORF

ACCN: NM_001159377

ORF Size: 1149 bp

OTI Disclaimer: The molecular sequence of this clone aligns with the gene accession number as a point of reference only. However, individual transcript sequences of the same gene can differ through naturally occurring variations (e.g. polymorphisms), each with its own valid existence. This clone is substantially in agreement with the reference, but a complete review of all prevailing variants is recommended prior to use. [More info](#)

OTI Annotation: This clone was engineered to express the complete ORF with an expression tag. Expression varies depending on the nature of the gene.

Components: The ORF clone is ion-exchange column purified and shipped in a 2D barcoded Matrix tube containing 10ug of transfection-ready, dried plasmid DNA (reconstitute with 100 ul of water).

- Reconstitution Method:**
1. Centrifuge at 5,000xg for 5min.
 2. Carefully open the tube and add 100ul of sterile water to dissolve the DNA.
 3. Close the tube and incubate for 10 minutes at room temperature.
 4. Briefly vortex the tube and then do a quick spin (less than 5000xg) to concentrate the liquid at the bottom.
 5. Store the suspended plasmid at -20°C. The DNA is stable for at least one year from date of shipping when stored at -20°C.

RefSeq: [NM_001159377.1](#), [NP_001152849.1](#)

RefSeq Size: 3038 bp

RefSeq ORF: 1152 bp

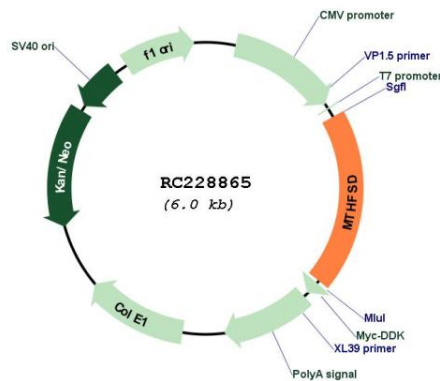
Locus ID: 64779

UniProt ID: [Q2M296](#)

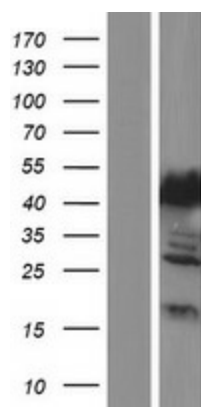
Cytogenetics: 16q24.1

MW: 42.3 kDa

Product images:



Circular map for RC228865



Western blot validation of overexpression lysate (Cat# [LY431893]) using anti-DDK antibody (Cat# [TA50011-100]). Left: Cell lysates from untransfected HEK293T cells; Right: Cell lysates from HEK293T cells transfected with RC228865 using transfection reagent MegaTran 2.0 (Cat# [TT210002]).