

Product datasheet for RC228851L3

GPR85 (NM_001146267) Human Tagged Lenti ORF Clone

Product data:

Product Type:	Expression Plasmids
Product Name:	GPR85 (NM_001146267) Human Tagged Lenti ORF Clone
Tag:	Myc-DDK
Symbol:	GPR85
Synonyms:	SREB; SREB2
Mammalian Cell Selection:	Puromycin
Vector:	pLenti-C-Myc-DDK-P2A-Puro (PS100092)
E. coli Selection:	Chloramphenicol (34 ug/mL)
ORF Nucleotide Sequence:	The ORF insert of this clone is exactly the same as(RC228851).
Restriction Sites:	SgfI-MluI
Cloning Scheme:	

Cloning sites used for ORF Shuttling:



* The last codon before the Stop codon of the ORF.

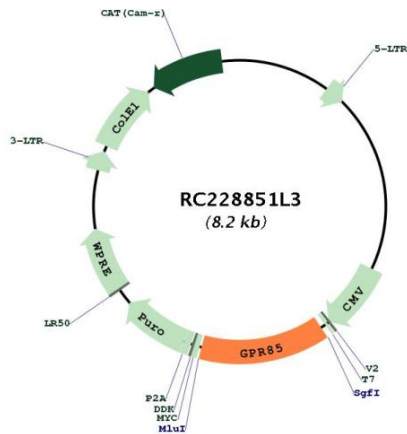
ACCN:	NM_001146267
ORF Size:	1110 bp



[View online »](#)

OTI Disclaimer:	The molecular sequence of this clone aligns with the gene accession number as a point of reference only. However, individual transcript sequences of the same gene can differ through naturally occurring variations (e.g. polymorphisms), each with its own valid existence. This clone is substantially in agreement with the reference, but a complete review of all prevailing variants is recommended prior to use. More info
OTI Annotation:	This clone was engineered to express the complete ORF with an expression tag. Expression varies depending on the nature of the gene.
Components:	The ORF clone is ion-exchange column purified and shipped in a 2D barcoded Matrix tube containing 10ug of transfection-ready, dried plasmid DNA (reconstitute with 100 ul of water).
Reconstitution Method:	<ol style="list-style-type: none">1. Centrifuge at 5,000xg for 5min.2. Carefully open the tube and add 100ul of sterile water to dissolve the DNA.3. Close the tube and incubate for 10 minutes at room temperature.4. Briefly vortex the tube and then do a quick spin (less than 5000xg) to concentrate the liquid at the bottom.5. Store the suspended plasmid at -20°C. The DNA is stable for at least one year from date of shipping when stored at -20°C.
RefSeq:	NM_001146267.1 , NP_001139739.1
RefSeq Size:	4778 bp
RefSeq ORF:	1113 bp
Locus ID:	54329
UniProt ID:	P60893
Cytogenetics:	7q31.1
Protein Families:	Druggable Genome, GPCR, Transmembrane
MW:	42 kDa
Gene Summary:	Members of the G protein-coupled receptor (GPCR) family, such as GPR85, have a similar structure characterized by 7 transmembrane domains. Activation of GPCRs by extracellular stimuli, such as neurotransmitters, hormones, or light, induces an intracellular signaling cascade mediated by heterotrimeric GTP-binding proteins, or G proteins (Matsumoto et al., 2000 [PubMed 10833454]).[supplied by OMIM, Aug 2008]

Product images:



Circular map for RC228851L3