

Product datasheet for **RC228850**

GPR85 (NM_001146266) Human Tagged ORF Clone

Product data:

Product Type:	Expression Plasmids
Product Name:	GPR85 (NM_001146266) Human Tagged ORF Clone
Tag:	Myc-DDK
Symbol:	GPR85
Synonyms:	SREB; SREB2
Mammalian Cell Selection:	Neomycin
Vector:	pCMV6-Entry (PS100001)
E. coli Selection:	Kanamycin (25 ug/mL)
ORF Nucleotide Sequence:	>RC228850 ORF sequence Red=Cloning site Blue=ORF Green=Tags(s)

TTTTGTAATACGACTCACTATAGGGCGGCCGGAATTCGTCGACTGGATCCGGTACCGAGGAGATCTGCC
GCC**CGATCGCC**

ATGGCGAACTATAGCCATGCAGCTGACAACATTTGCAAATCTCTCGCCTAACAGCCTTTCTGAAAC
TGACTTCCTGGGTTTCATAATAGGAGTCAGCGTGGTGGGCAACCTCCTGATCTCCATTTGCTAGTGAA
AGATAAGACCTTGCATAGAGCACCTTACTACTCCTGTTGGATCTTTGCTGTTCCAGATATCCTCAGATCT
GCAATTTGTTCCATTTGTGTTCAACTCTGTCAAAAATGGCTCTACCTGGACTTATGGGACTCTGACTT
GCAAAGTGATTGCCTTTCTGGGGTTTTGTCCTGTTCCACACTGCTTTCATGCTCTTCTGCATCAGTGT
CACCAGATACTTAGCTATCGCCCATCACCGCTTCTATACAAAGAGGCTGACCTTTTGGACGTGTCTGGCT
GTGATCTGTATGGTGTGGACTCTGTCTGTGGCCATGGCATTTCCTCCCGGTTTTAGACGTGGGCACTTACT
CATTCAATAGGGAGGAAGATCAATGCGCCTTCCAACACCGCTCCTTCAGGGCTAATGATTCTTAGGATT
TATGCTGCTTCTGCTCTCATCTCCTAGCCACACAGCTTGTCTACCTCAAGCTGATATTTTTGCTCCAC
GATCGAAGAAAAATGAAGCCAGTCCAGTTTGTAGCAGCAGTCAGCCAGAAGTGGACTTTTCATGGTCCTG
GAGCCAGTGGCCAGGCAGCTGCCAATTGGCTAGCAGGATTTGGAAGGGTCCCACACCACCCACCTTGCT
GGGCATCAGGCAAAATGCAAACACCACAGGCAGAAGAAGGCTATTGGTCTTAGACGAGTTCAAAAATGGAG
AAAAGAATCAGCAGAATGTTCTATATAATGACTTTTCTGTTTCAACCTGTGGGGCCCTACCTGGTGG
CCTGTTATTGGAGATTTTTGCAAGAGGGCTGTAGTACCAGGGGATTCTAACAGCTGCTGTCTGGAT
GAGTTTTGCCAAGCAGGAATCAATCCTTTTGTCTGCATTTTCTCAAACAGGGAGCTGAGGCGCTGTTTC
AGCACACCCTTCTTTACTGCAGAAAATCCAGGTTACCAAGGAACCTTACTGTGTATA

ACGCGTACGCGGCCGCTCGAGCAGAACTCATCTCAGAAGAGGATCTGGCAGCAAATGATATCCTGGATT
ACAAGGATGACGACGATAAGGTTAA



[View online »](#)

Protein Sequence: >RC228850 protein sequence
Red=Cloning site Green=Tags(s)

MANYSHAADNILQNL SPLTAFLKLTSLGFIIGVSVVGNLLISILLVKDKTLHRAPYYFLDLCCSDILRS
 AICFPFVFN SVKNGSTWYGTLTCKVIAFLGVLSCFHAFMLFCISVTRYLAIAHHRFYTKRLTFWTCLA
 VICMVWTL SVAMAFPPVLDVGTYSFIREEDQCAFQHRSFANDSLGFMLLLALILLATQLVYLKLIFFVH
 DRRKMKPVQFVAAVSQNWTFHGPASGQAAANWLAGFGRGPTPTLLGIRQANANTGRRRLLVLDEFKME
 KRISRMYIMTFLFLTLWGPYLVACYWRVVFARGPVVPGGFLTAAVWMSFAQAGINPFVCIFSNRELRRCF
 STLLLYCRKSRLPREPYCVI

TRTRPLEQKLISEEDLAANDILDYKDDDDKV

Chromatograms: https://cdn.origene.com/chromatograms/mk6028_f08.zip

Restriction Sites: SgfI-MluI

Cloning Scheme:



* The last codon before the Stop codon of the ORF

ACCN: NM_001146266

ORF Size: 1110 bp

OTI Disclaimer: The molecular sequence of this clone aligns with the gene accession number as a point of reference only. However, individual transcript sequences of the same gene can differ through naturally occurring variations (e.g. polymorphisms), each with its own valid existence. This clone is substantially in agreement with the reference, but a complete review of all prevailing variants is recommended prior to use. [More info](#)

OTI Annotation: This clone was engineered to express the complete ORF with an expression tag. Expression varies depending on the nature of the gene.

Components: The ORF clone is ion-exchange column purified and shipped in a 2D barcoded Matrix tube containing 10ug of transfection-ready, dried plasmid DNA (reconstitute with 100 ul of water).

Reconstitution Method:

1. Centrifuge at 5,000xg for 5min.
2. Carefully open the tube and add 100ul of sterile water to dissolve the DNA.
3. Close the tube and incubate for 10 minutes at room temperature.
4. Briefly vortex the tube and then do a quick spin (less than 5000xg) to concentrate the liquid at the bottom.
5. Store the suspended plasmid at -20°C. The DNA is stable for at least one year from date of shipping when stored at -20°C.

RefSeq: [NM_001146266.1](#), [NP_001139738.1](#)

RefSeq Size: 4841 bp

RefSeq ORF: 1113 bp

Locus ID: 54329

UniProt ID: [P60893](#)

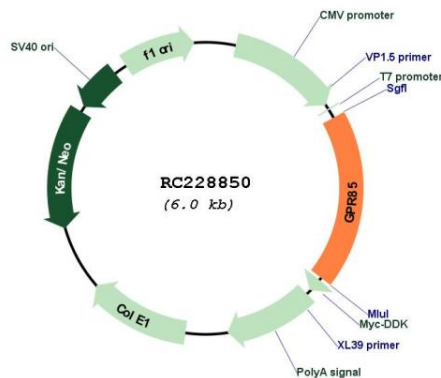
Cytogenetics: 7q31.1

Protein Families: Druggable Genome, GPCR, Transmembrane

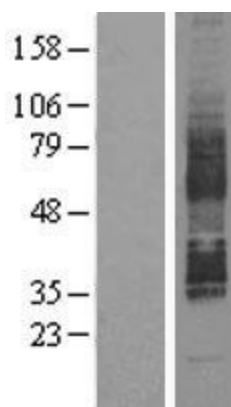
MW: 42 kDa

Gene Summary: Members of the G protein-coupled receptor (GPCR) family, such as GPR85, have a similar structure characterized by 7 transmembrane domains. Activation of GPCRs by extracellular stimuli, such as neurotransmitters, hormones, or light, induces an intracellular signaling cascade mediated by heterotrimeric GTP-binding proteins, or G proteins (Matsumoto et al., 2000 [PubMed 10833454]).[supplied by OMIM, Aug 2008]

Product images:



Circular map for RC228850



Western blot validation of overexpression lysate (Cat# [LY431879]) using anti-DDK antibody (Cat# [TA50011-100]). Left: Cell lysates from untransfected HEK293T cells; Right: Cell lysates from HEK293T cells transfected with [RC228851] using transfection reagent MegaTran 2.0 (Cat# [TT210002]).