

Product datasheet for RC228825

PTGR1 (NM_001146108) Human Tagged ORF Clone

Product data:

Product Type:	Expression Plasmids
Product Name:	PTGR1 (NM_001146108) Human Tagged ORF Clone
Tag:	Myc-DDK
Symbol:	PTGR1
Synonyms:	DIG-1; LTB4DH; PGR1; ZADH3
Mammalian Cell Selection:	Neomycin
Vector:	pCMV6-Entry (PS100001)
E. coli Selection:	Kanamycin (25 ug/mL)
ORF Nucleotide Sequence:	>RC228825 ORF sequence Red=Cloning site Blue=ORF Green=Tags(s)

TTTTGTAATACGACTCACTATAGGGCGGCCGGAATTCGTCGACTGGATCCGGTACCGAGGAGATCTGCCGCCGCGATCGCC

ATGGTTTCGTAAGACATGGACCCTGAAGAAGCACTTTGTTGGCTATCCTACTAATAGTGACTTTGAGT
TGAAGACATCTGAGCTCCACCCTTAAAAATGGAGAGGTCTGCTTGAAGCTTTGTTCCCTACCGTGGA
TCCCTACATGAGAGTGGCAGCCAAAAGATTGAAGGAAGGTGATACAATGATGGGGCAGCAAGTGGCCAAA
GTTGTGGAAAGTAAAAATGTAGCCCTACCAAAAGGAACATTGTACTGGCTTCTCCAGGCTGGACAACGC
ACTCCATTTCTGATGGGAAAGATCTGGAAAAGCTGCTGACAGAGTGGCCAGACACAATACCACTGTCTTT
GGCTCTGGGACAGTTGGCATGCCAGGCCTGACTGCCTACTTTGGCCTACTTGAAATCTGTGGTGTGAAG
GGTGGAGAAACAGTGATGGTTAATGCAGCAGCTGGAGCTGTGGGCTCAGTCGTGGGGCAGATTGCAAAGC
TCAAGGGCTGCAAAGTTGTTGGAGCAGTAGGGTCTGATGAAAAGGTTGCCTACCTTCAAAGCTTGGATT
TGATGTCGCTTTAACTACAAGACGGTAGAGTCTTTGGAAGAAACCTTGAAGAAAGCGTCTCCTGATGGT
TATGATTGTTATTTGATAATGTAGGTGGAGAGTTTTCAAACACTGTTATCGCCAGATGAAGAAATTTG
GAAGGATTGCCATATGTGGAGCCATCTACATATAACAGAACCGGCCACTTCCCCAGGCCACCCCC
AGAGATTGTTATCTATCAGGAGCTTCGCATGGAAGCTTTTGTCTACCCTGGCAAGGAGATGCCCGC
CAAAAAGCTCTGAAGACTTGCTGAAATGGGTCTTAGAGGGTAAAATCCAGTACAAGGAATATATCATTG
AAGGATTTGAAAACATGCCAGCCGCAATTTATGGGAATGCTGAAAGGAGATAATTTGGGGAAGACAATAGT
GAAAGCA

ACGCGTACGCGGCCGCTCGAGCAGAAACTCATCTCAGAAGAGGATCTGGCAGCAAATGATATCCTGGATT
ACAAGGATGACGACGATAAGGTTTAA



[View online »](#)

Protein Sequence: >RC228825 protein sequence
Red=Cloning site Green=Tags(s)

MVRTKTWTLKKHFVGYPTNSDFELKTSELPPLKNGEVLLLEALFLTVDPYMRVAAKRLKEGDTMMGQQVAK
 VVESKNVALPKGTIVLASPGWTHSISDGKDLEKLLTEWPDITPLSLALGTVMGPGLTAYFGLLEICGVK
 GGETVMVNAAGAVGSVVGQIAKLGCKVVGAVGSDEKVAYLQKLGFDVVFNYKTVESLEETLKKASPDG
 YDCYFDNVGGEFSNTVIGQMKKFGRIAICGAISTYNRTGPLPPGPPPEIIVYQELRMEAFVVYRWQGDAR
 QKALKDLLKQVLEGGKIYKEYIIEGFENMPAAFMGMLKGDNLGKTIVKA

TRTRPLEQKLISEEDLAANDILDYKDDDDKV

Chromatograms: https://cdn.origene.com/chromatograms/mk6332_f02.zip

Restriction Sites: SgfI-MluI

Cloning Scheme:



ACCN: NM_001146108

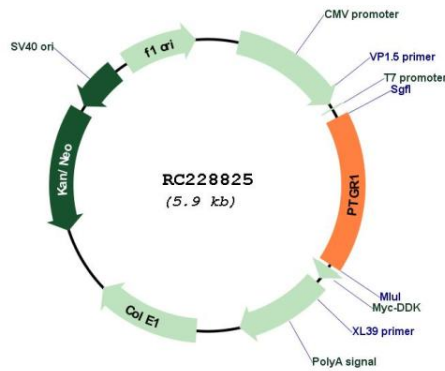
ORF Size: 987 bp

OTI Disclaimer: Due to the inherent nature of this plasmid, standard methods to replicate additional amounts of DNA in E. coli are highly likely to result in mutations and/or rearrangements. Therefore, OriGene does not guarantee the capability to replicate this plasmid DNA. Additional amounts of DNA can be purchased from OriGene with batch-specific, full-sequence verification at a reduced cost. Please contact our customer care team at custsupport@origene.com or by calling 301.340.3188 option 3 for pricing and delivery.

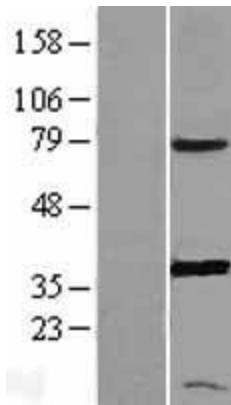
The molecular sequence of this clone aligns with the gene accession number as a point of reference only. However, individual transcript sequences of the same gene can differ through naturally occurring variations (e.g. polymorphisms), each with its own valid existence. This clone is substantially in agreement with the reference, but a complete review of all prevailing variants is recommended prior to use. [More info](#)

OTI Annotation:	This clone was engineered to express the complete ORF with an expression tag. Expression varies depending on the nature of the gene.
Components:	The ORF clone is ion-exchange column purified and shipped in a 2D barcoded Matrix tube containing 10ug of transfection-ready, dried plasmid DNA (reconstitute with 100 ul of water).
Reconstitution Method:	<ol style="list-style-type: none">1. Centrifuge at 5,000xg for 5min.2. Carefully open the tube and add 100ul of sterile water to dissolve the DNA.3. Close the tube and incubate for 10 minutes at room temperature.4. Briefly vortex the tube and then do a quick spin (less than 5000xg) to concentrate the liquid at the bottom.5. Store the suspended plasmid at -20°C. The DNA is stable for at least one year from date of shipping when stored at -20°C.
RefSeq:	<u>NM_001146108.1</u> , <u>NP_001139580.1</u>
RefSeq Size:	1409 bp
RefSeq ORF:	990 bp
Locus ID:	22949
UniProt ID:	<u>Q14914</u>
Cytogenetics:	9q31.3
Protein Families:	Druggable Genome
MW:	35.9 kDa
Gene Summary:	This gene encodes an enzyme that is involved in the inactivation of the chemotactic factor, leukotriene B4. The encoded protein specifically catalyzes the NADP+ dependent conversion of leukotriene B4 to 12-oxo-leukotriene B4. A pseudogene of this gene is found on chromosome 1. Alternative splicing results in multiple transcript variants. [provided by RefSeq, Mar 2009]

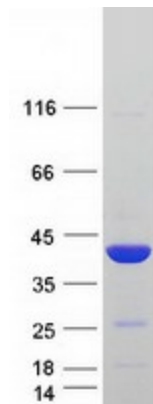
Product images:



Circular map for RC228825



Western blot validation of overexpression lysate (Cat# [LY431853]) using anti-DDK antibody (Cat# [TA50011-100]). Left: Cell lysates from untransfected HEK293T cells; Right: Cell lysates from HEK293T cells transfected with RC228825 using transfection reagent MegaTran 2.0 (Cat# [TT210002]).



Coomassie blue staining of purified PTGR1 protein (Cat# [TP328825]). The protein was produced from HEK293T cells transfected with PTGR1 cDNA clone (Cat# RC228825) using MegaTran 2.0 (Cat# [TT210002]).