

Product datasheet for RC228823

TMEM171 (NM_001161342) Human Tagged ORF Clone

Product data:

Product Type:	Expression Plasmids
Product Name:	TMEM171 (NM_001161342) Human Tagged ORF Clone
Tag:	Myc-DDK
Symbol:	TMEM171
Synonyms:	PRP2
Mammalian Cell Selection:	Neomycin
Vector:	pCMV6-Entry (PS100001)
E. coli Selection:	Kanamycin (25 ug/mL)
ORF Nucleotide Sequence:	>RC228823 representing NM_001161342 Red=Cloning site Blue=ORF Green=Tags(s)

TTTTGTAATACGACTCACTATAGGGCGGCCGGAATTCGTCGACTGGATCCGGTACCGAGGAGATCTGCC
GCC**CGATCGCC**

ATGTCTCTCGAGCTGCTGCTGAGCCAGATGGGGACCAGCAGGACAGACACGTCAGCAAACCTCATCTTCT
GCTTCTTTGTCTTCGGCGCCGTCTTGTGTGTGGGAGTCTGCTCTCCATCTTTGGGTTCCAGGCATG
CCAATAAAGCCCTCCCAGACTGCCCCATGGTCTCAAGGTGGCGGGCCTGCATGTGCCGTGGTTGGA
CTTGGGGCTGTGATCCTGGCCCGCTCCCGGGCGCAACTTCAGCTCCGTGCAGGGCTGCAGAGAGGTCAGC
AGATGGACCCCGACCGAGCCTTCATCTGTGGAGAGAGCCCGCAGTTTGCCAGTGCCTTATCTTTGGGTT
TCTGTTCTTGACAAGCGGCATGCTCATCAGCGTCTGGGCATTTGGGTCCCTGGATGTGGCTCCAACCTGG
GCGCAGGAACCGCTAAACGAGACAGACTGGCGACTCAGAGCCCCGGATGTGTGGGTTCTTTCTCTGC
AGATCATGGGGCCCTTGATTGTGCTTGTGGGATTGTGTTTCTTCGTGGTTGCCCATGTTAAGAAGAGAAA
CACGCTGAATGCTGGCCAGGATGCCTCTGAGAGAGAAGAGGGACAGATCCAGATTATGGAGCCTGTCCAG
GTCACTGTAGGTGACTCGGTAATAATATTTCCACCCCTCCACCCTTACTTTCTGAATCTTCAGCTT
CTGCGGTCGCTGAGAGTCTGGAACCTAACAGTCTGCTTCCGAATGAAAACCCCTTCATATTACAGTAT
TTTCAACTATGGGACCCCAACTTCAGAGGGTGCAGCCTCTGAAAGAGACTGTGAATCTATATACCATT
TCTGGGACGAATTCATCTTCTGAGGCCTCACACTCCACATCTTCCATCTGAATTGCCTCCTAGATATG
AAGAAAAAGAAAATGCTGCAGCTACATTCTTGCCTCTATCTTCTGAGCCTTCCCCACCG

ACGCGTACGCGGCCGCTCGAGCAGAAACTCATCTCAGAAGAGGATCTGGCAGCAAATGATATCCTGGATT
ACAAGGATGACGACGATAAGGTTTAA



[View online »](#)

Protein Sequence: >RC228823 representing NM_001161342
Red=Cloning site Green=Tags(s)

MSPAAAAPDGDQDRHVSKLIFCFFVFGAVLLCVGVLLSIFGFQACQYKPLPDCPMVLKVAGPACAVVG
 LGAVILARSRAQLQLRAGLQRGQQMDPDRAFICGESRQFAQCLIFGFLFLTSGLMISVLGIWVPGCGSNW
 AQEPLNETDGTGSEPRMCGFLSLQIMGPLIVLVGLCFFVVAHVKKRNTLNAGQDASEREEGQIQIMEPVQ
 VTVGDSVIFPPPPPPYFPSSASAVAESPGTNSLLPNENPPSYYSIFNYGTPTSEGAASERDCESIYTI
 SGTNSSSEASHTPHLPSELPPRYEEKENAAATFLPLSSEPSPP

TRTRPLEQKLISEEDLAANDILDYKDDDDKV

Chromatograms: https://cdn.origene.com/chromatograms/ja1511_f08.zip

Restriction Sites: SgfI-MluI

Cloning Scheme:



ACCN: NM_001161342

ORF Size: 969 bp

OTI Disclaimer: The molecular sequence of this clone aligns with the gene accession number as a point of reference only. However, individual transcript sequences of the same gene can differ through naturally occurring variations (e.g. polymorphisms), each with its own valid existence. This clone is substantially in agreement with the reference, but a complete review of all prevailing variants is recommended prior to use. [More info](#)

OTI Annotation: This clone was engineered to express the complete ORF with an expression tag. Expression varies depending on the nature of the gene.

Components: The ORF clone is ion-exchange column purified and shipped in a 2D barcoded Matrix tube containing 10ug of transfection-ready, dried plasmid DNA (reconstitute with 100 ul of water).

Reconstitution Method:

1. Centrifuge at 5,000xg for 5min.
2. Carefully open the tube and add 100ul of sterile water to dissolve the DNA.
3. Close the tube and incubate for 10 minutes at room temperature.
4. Briefly vortex the tube and then do a quick spin (less than 5000xg) to concentrate the liquid at the bottom.
5. Store the suspended plasmid at -20°C. The DNA is stable for at least one year from date of shipping when stored at -20°C.

RefSeq: [NM_001161342.1](#), [NP_001154814.1](#)

RefSeq ORF: 972 bp

Locus ID: 134285

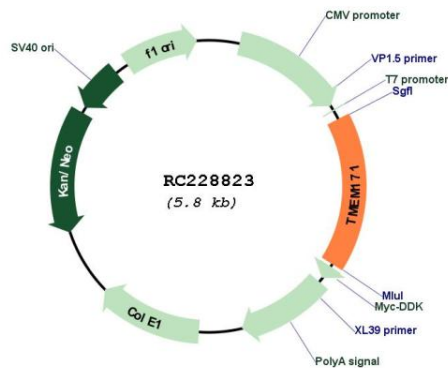
UniProt ID: [Q8WVE6](#)

Cytogenetics: 5q13.2

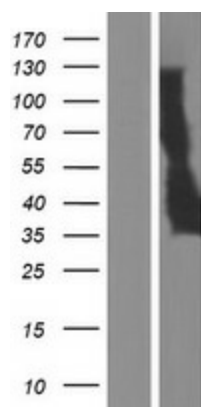
Protein Families: Druggable Genome, GPCR, Transmembrane

MW: 34.4 kDa

Product images:



Circular map for RC228823



Western blot validation of overexpression lysate (Cat# [LY431851]) using anti-DDK antibody (Cat# [TA50011-100]). Left: Cell lysates from untransfected HEK293T cells; Right: Cell lysates from HEK293T cells transfected with RC228823 using transfection reagent MegaTran 2.0 (Cat# [TT210002]).