

Product datasheet for **RC228821**

TNIP2 (NM_001161527) Human Tagged ORF Clone

Product data:

Product Type: Expression Plasmids
Product Name: TNIP2 (NM_001161527) Human Tagged ORF Clone
Tag: Myc-DDK
Symbol: TNIP2
Synonyms: ABIN2; FLIP1; KLIP
Mammalian Cell Selection: Neomycin
Vector: pCMV6-Entry (PS100001)
E. coli Selection: Kanamycin (25 ug/mL)
ORF Nucleotide Sequence: >RC228821 representing NM_001161527
Red=Cloning site Blue=ORF Green=Tags(s)

TTTTGTAATACGACTCACTATAGGGCGGCCGGAATTCGTCGACTGGATCCGGTACCGAGGAGATCTGCC
GCC**CGATCGCC**

ATGCAGCAGCTGCTGAGCCAGCCCCAACACGAGCGAGAGAAGGAAGTCGTCTGTACGGAGGAGCATGG
CAGAAGGGGAGCGCGCCCGGGCCAGTGACGTCCTGTGCCGCTCCTGGCCAACGAGACCCATCAGCT
GCGGAGGACGCTGACCGCCACCGCCACATGTGTGAGCATCTGGCCAAGTGTCTGGATGAACGACAGCAT
GCACAAAGGAATGTGGGGAGAGAAGTCTGACCAGTCGGAACACACAGATGGGCACACCTCTGTCCAGA
GTGTTATTGAGAAGTTGCAGGAAGAAAATCGACTGTTAAAACAGAAGGTGACTCACGTTGAAGACCTCAA
TGCCAAGTGCCAGCGCTACAACGCCAGCAGGGACGAATACGTGAGGGGGCTCCATGCGCAGCTCAGGGGG
CTGCAGATCCCCACGAGCCGAGCTGATGAGGAAGGAGATCTCCCGGCTCAACGACAGATTGGAAGAGA
AAATAAATGACTGTGCCGAAGTGAAGCAGGAGCTGGCGGCTCCAGGACGGCCCGGGATGCTGCGTTGGA
GCGGGTGCAGATGCTGGAACAGCAGATTCTCGCTTACAAGGATGACTTCATGTCAGAAAGGGCCGATCGG
GAACGGGCTCAAAGTAGGATTCAAGAACTGGAGGAAAAGTTCGCCTTTTGTGCACCAGGTGCTCTGGA
GACAGGATTCTCGAGAGCCAGACCGCGCCGATTACGCTGGGAGCAAACTGCCAAGTATTTGGCCCG
CGACGCATTAGAGCTTATGGTGCCTGGTGGCTGGAGGCCCTGGGACTGGTCCCAGCAGCCAGAACCCCT
GCAGAGGGCGGGCATCCTGGCGCGGCCAGAGAGGCCAGGGGGACCTTCAGTCCCTCACTGCCTGCAGT
GCTTCAGTGACGAGCAAGGGGAAGAGCTCCTCAGGCATGTGGCTGAGTGCTGCCAG

ACGCGTACGCGGCCGCTCGAGCAGAAACTCATCTCAGAAGAGGATCTGGCAGCAAATGATATCCTGGATT
ACAAGGATGACGACGATAAGGTTTAA



[View online »](#)

Protein Sequence: >RC228821 representing NM_001161527
 Red=Cloning site Green=Tags(s)

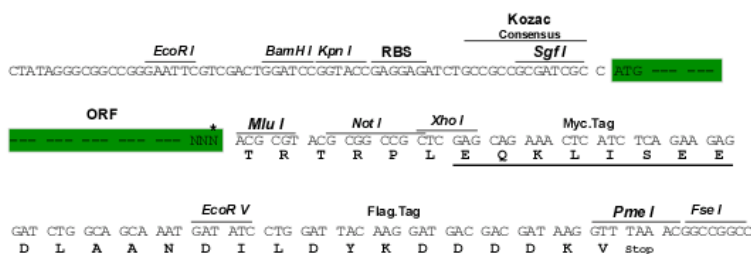
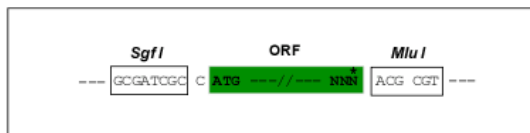
MQQLLSQPQHEREKEVLLRRSMAEGERARAASDVLCRSLANETHQLRRTL TATAHMCQHLAKCLDERQH
 AQRNVGERSPDQSEHTDGHTSVQSVIEKLQEENRLLKQKVTHVEDLNAKWQRYNASRDEYVRGLHAQLRG
 LQIPHEPELMRKEISRNLNRQLEEKINDCAEVKQELAASRTARDAALERVQMLEQQILAYKDDFMSEADR
 ERAQSRIQELEEKVASLLHQVSWRQDSREPDAGRIHAGSKTAKYLAADALELMVPGGWRP GTGSQQPEPP
 AEGGHPGAAQRGGDLQCPHCLQCF SDEQGEELLRHVAECCQ

TRTRPLEQKLISEEDLAANDILDYKDDDDKV

Restriction Sites: SgfI-MluI

Cloning Scheme:

Cloning sites used for ORF Shuttling:



* The last codon before the Stop codon of the ORF

ACCN: NM_001161527

ORF Size: 966 bp

OTI Disclaimer: The molecular sequence of this clone aligns with the gene accession number as a point of reference only. However, individual transcript sequences of the same gene can differ through naturally occurring variations (e.g. polymorphisms), each with its own valid existence. This clone is substantially in agreement with the reference, but a complete review of all prevailing variants is recommended prior to use. [More info](#)

OTI Annotation: This clone was engineered to express the complete ORF with an expression tag. Expression varies depending on the nature of the gene.

Components: The ORF clone is ion-exchange column purified and shipped in a 2D barcoded Matrix tube containing 10ug of transfection-ready, dried plasmid DNA (reconstitute with 100 ul of water).

Reconstitution Method:

1. Centrifuge at 5,000xg for 5min.
2. Carefully open the tube and add 100ul of sterile water to dissolve the DNA.
3. Close the tube and incubate for 10 minutes at room temperature.
4. Briefly vortex the tube and then do a quick spin (less than 5000xg) to concentrate the liquid at the bottom.
5. Store the suspended plasmid at -20°C. The DNA is stable for at least one year from date of shipping when stored at -20°C.

RefSeq: [NM_001161527.2](#)

RefSeq Size: 1707 bp

RefSeq ORF: 969 bp

Locus ID: 79155

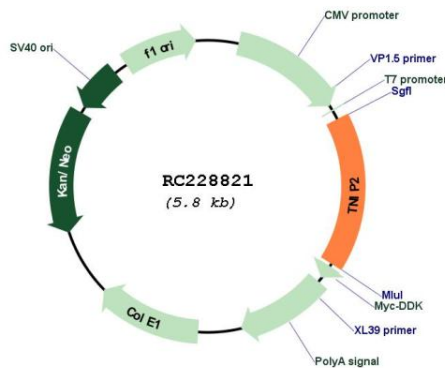
UniProt ID: [Q8NFZ5](#)

Cytogenetics: 4p16.3

MW: 36.7 kDa

Gene Summary: This gene encodes a protein which acts as an inhibitor of NFkappaB activation. The encoded protein is also involved in MAP/ERK signaling pathway in specific cell types. It may be involved in apoptosis of endothelial cells. Alternative splicing results in multiple transcript variants. A pseudogene related to this gene is located on the X chromosome.[provided by RefSeq, May 2014]

Product images:



Circular map for RC228821