

Product datasheet for RC228815

TBX20 (NM_001166220) Human Tagged ORF Clone

Product data:

Product Type:	Expression Plasmids
Product Name:	TBX20 (NM_001166220) Human Tagged ORF Clone
Tag:	Myc-DDK
Symbol:	TBX20
Synonyms:	ASD4
Mammalian Cell Selection:	Neomycin
Vector:	pCMV6-Entry (PS100001)
E. coli Selection:	Kanamycin (25 ug/mL)
ORF Nucleotide Sequence:	>RC228815 ORF sequence Red=Cloning site Blue=ORF Green=Tags(s)

TTTTGTAATACGACTCACTATAGGGCGGCCGGAATTCGTCGACTGGATCCGGTACCGAGGAGATCTGCC
GCC**CGATCGCC**

ATGGAGTTCACGGCGTCCCCAAGCCCCAACTCTCCTCCGGGCCAACGCCTTCTCCATTGCCGCGCTCA
TGTCGAGCGGGCTCTAAGGAGAAGGAGGCGACGGAGAACACAATCAAACCCCTGGAGCAATTTGTGGA
GAAGTCGTCCTGTGCCAGCCCCGGGTGAGCTGACCGCCTGGATGCTCATGGGAGTTTGGTGGAGGC
AGTGGCAGCAGCCGTCCTCCTCTCTGTGCACTGAGCCACTGATCCCACCACCCCCATCATCCCCA
GTGAGGAAATGGCCAAAATTGCCTGCAGCCTGGAGACCAAGGAGCTTTGGGACAAATTCATGAGCTGGG
CACCGAGATGATCATACCAAGTCGGGCAGGAGGATGTTTCCAACCATCCGGGTGTCTTTTCGGGGGTG
GATCCTGAGGCCAAGTACATAGTCTGATGGACATCGTCCCTGTGGACAACAAGAGGTACCGCTACGCCCT
ACCACCGTCTCCTGGCTGGTGGCTGGCAAGGCCGACCCGCGTTGCCAGCCAGGCTCTATGTGCATCC
AGATTCTCCTTTACCGGTGAGCAACTACTCAAACAGATGGTGTCTTTGAAAAGGTGAAACTCACCAAC
AATGAAGTGGATCAACATGGCCATATAATTTGAACTCAATGCATAAGTACCAGCCAAGGTCACATCA
TTAAGAAGAAAGACCACAGCCTCATTGCTCAACCTGAAGTCTGAAGAATTTAGAACTTTCATCTTTCC
AGAAACAGTTTTTACGGCAGTCACTGCCTACCAGAATCAACTGATAACGAAGCTGAAAATAGATAGCAAT
CCTTTTGCCAAAGGATTCGGGATTCCTCCAGGCTCACTGACATTGAGAGGT

ACGCGTACGCGGCCGCTCGAGCAGAAACTCATCTCAGAAGAGGATCTGGCAGCAAATGATATCCTGGATT
ACAAGGATGACGACGATAAGGTTTAA



[View online »](#)

Protein Sequence: >RC228815 protein sequence
 Red=Cloning site Green=Tags(s)

MEFTASPKPQLSSRANAFSIAALMSSGGSSKEKEATENTIKPLEQFVEKSSCAQPLGELTS LDAHGEGGG
 SGSSPSSSLCTEPLIPTTPIIPSEEMAKIACSLKELWDFHELGTMIITKSGRRMFPTIRVFSFGV
 DPEAKYIVLMDI V PVDNKRYRYAYHRSSWL VAGKADPPLPARL YVHPDSPFTGEQLLKQMVSEKVKLTN
 NELDQHGHIILNSMHKYQPRVHI IKKKDHTASLLNLKSEEFRTF IFPETVFTAVTAYQNQLITKLIKIDSN
 PFAKGFDRDSSRLTDIER

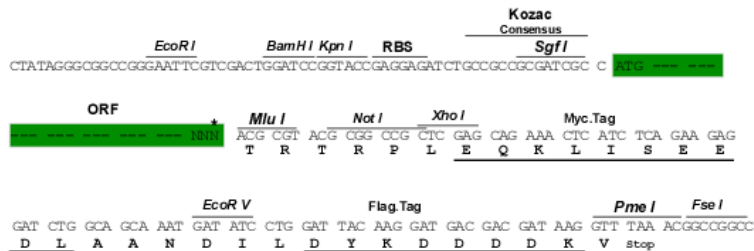
TRTRPLEQKLISEEDLAANDILDYKDDDDKV

Chromatograms: https://cdn.origene.com/chromatograms/mk6442_b01.zip

Restriction Sites: SgfI-MluI

Cloning Scheme:

Cloning sites used for ORF Shuttling:



* The last codon before the Stop codon of the ORF

ACCN: NM_001166220

ORF Size: 892 bp

OTI Disclaimer: The molecular sequence of this clone aligns with the gene accession number as a point of reference only. However, individual transcript sequences of the same gene can differ through naturally occurring variations (e.g. polymorphisms), each with its own valid existence. This clone is substantially in agreement with the reference, but a complete review of all prevailing variants is recommended prior to use. [More info](#)

OTI Annotation: This clone was engineered to express the complete ORF with an expression tag. Expression varies depending on the nature of the gene.

Components: The ORF clone is ion-exchange column purified and shipped in a 2D barcoded Matrix tube containing 10ug of transfection-ready, dried plasmid DNA (reconstitute with 100 ul of water).

Reconstitution Method:

1. Centrifuge at 5,000xg for 5min.
2. Carefully open the tube and add 100ul of sterile water to dissolve the DNA.
3. Close the tube and incubate for 10 minutes at room temperature.
4. Briefly vortex the tube and then do a quick spin (less than 5000xg) to concentrate the liquid at the bottom.
5. Store the suspended plasmid at -20°C. The DNA is stable for at least one year from date of shipping when stored at -20°C.

RefSeq: [NM_001166220.1](#), [NP_001159692.1](#)

RefSeq Size: 1374 bp

RefSeq ORF: 894 bp

Locus ID: 57057

UniProt ID: [Q9UMR3](#)

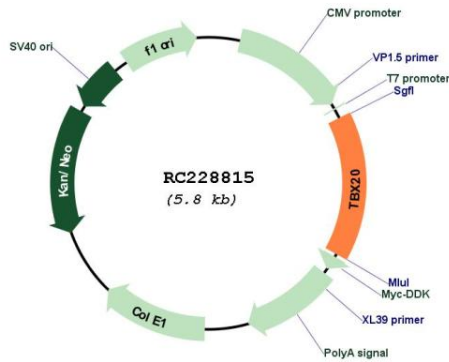
Cytogenetics: 7p14.2

Protein Families: Transcription Factors

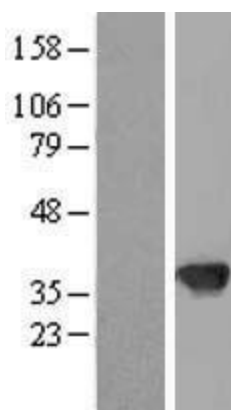
MW: 33.2 kDa

Gene Summary: This gene encodes a T-box family member. The T-box family members share a common DNA binding domain, termed the T-box, and they are transcription factors involved in the regulation of developmental processes. This gene is essential for heart development. Mutations in this gene are associated with diverse cardiac pathologies, including defects in septation, valvulogenesis and cardiomyopathy. Alternatively spliced transcript variants encoding different isoforms have been found for this gene. [provided by RefSeq, Oct 2009]

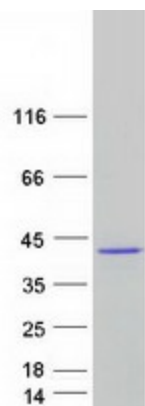
Product images:



Circular map for RC228815



Western blot validation of overexpression lysate (Cat# [LY431843]) using anti-DDK antibody (Cat# [TA50011-100]). Left: Cell lysates from untransfected HEK293T cells; Right: Cell lysates from HEK293T cells transfected with RC228815 using transfection reagent MegaTran 2.0 (Cat# [TT210002]).



Coomassie blue staining of purified TBX20 protein (Cat# [TP328815]). The protein was produced from HEK293T cells transfected with TBX20 cDNA clone (Cat# RC228815) using MegaTran 2.0 (Cat# [TT210002]).