

Product datasheet for **RC228800**

FHL1 (NM_001159704) Human Tagged ORF Clone

Product data:

Product Type:	Expression Plasmids
Product Name:	FHL1 (NM_001159704) Human Tagged ORF Clone
Tag:	Myc-DDK
Symbol:	FHL1
Synonyms:	FCMSU; FHL-1; FHL1A; FHL1B; FLH1A; KYOT; RBMX1A; RBMX1B; SLIM; SLIM-1; SLIM1; SLIMMER; XMPMA
Mammalian Cell Selection:	Neomycin
Vector:	pCMV6-Entry (PS100001)
E. coli Selection:	Kanamycin (25 ug/mL)
ORF Nucleotide Sequence:	>RC228800 representing NM_001159704 Red=Cloning site Blue=ORF Green=Tags(s)

TTTTGTAATACGACTCACTATAGGGCGGCCGGAATTCGTCGACTGGATCCGGTACCGAGGAGATCTGCC
GCC**CGATCGCC**

ATGGCGGAGAAGTTTGACTGCCACTACTGCAGGGATCCCTTGCAGGGGAAGAAGTATGTGCAAAAGGATG
GCCACCACTGCTGCCTGAAATGCTTTGACAAGTTCTGTGCCAACACCTGTGTGGAATGCCCAAGCCCAT
CGGTGCGGACTCCAAGGAGGTGCACTATAAGAACCCTTCTGGCATGACACCTGCTCCGCTGTGCCAAG
TGCCTTACCCCTTGGCCAATGAGACCTTTGTGGCCAAGGACAACAAGATCCTGTGCAACAAGTGCACCA
CTCGGGAGGACTCCCCAAGTGAAGGGGTGCTTCAAGGCCATTGTGGCAGGAGATCAAAACGTGGAGTA
CAAGGGGACCGTCTGGCACAAGACTGCTTACCTGTAGTAAGTCAAGCAAGTCATCGGGACTGGAAGC
TTCTTCCCTAAAGGGGAGGACTTCTACTGCGTGACTTGCCATGAGACCAAGTTTGCCAAGCATTGCGTGA
AGTGCAACAAGGCCATCACATCTGGAGGAATCACTTACCAGGATCAGCCCTGGCATGCCGATTGCTTTGT
GTGTGTTACCTGCTCTAAGAAGCTGGCTGGCAGCGTTTACCCTGTGGAGGACCAAGTATTACTGCGTG
GATTGCTACAAGAACTTTGTGGCCAAGAAGTGTGCTGGATGCAAGAACCCCATCACTGGGTTTGGTAAAG
GCTCCAGTGTGGTGGCCTATGAAGGACAATCCTGGCAGCACTACTGCTTCCACTGCAAAAAATGCTCCGT
GAATCTGGCCAACAAGCGCTTTGTTTTCCACCAGGAGCAAGTGTATTGTCCCGACTGTGCCAAAAAGCTG

ACGCGTACGCGGCCGCTCGAGCAGAACTCATCTCAGAAGAGGATCTGGCAGCAATGATATCCTGGATT
ACAAGGATGACGACGATAAGGTTTAA



[View online »](#)

Protein Sequence: >RC228800 representing NM_001159704
Red=Cloning site Green=Tags(s)

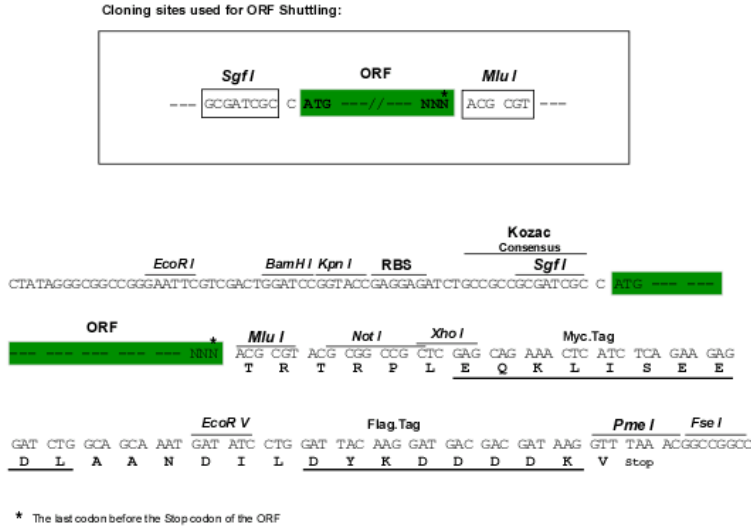
MAEKFDCHYCRDPLQGKKYVQKDGHHCLKCFDKFCANTCVECCKPIGADSKVEVHYKNRFWHDTCFRCAK
 CLHPLANETFFVAKDNKILCNKCTTREDSPKCKGCFKAIVAGDQNVYKGTVWHKDCFTCSNCKQVIGTGS
 FFPKGEDFYCVTCHETKFAKHCVKCNKAITSGGITIQDQPHWADCFVCVTCSSKLAGQRF TAVEDQYYCV
 DCYKNFVAKKACGCKNPITGFGKSSVVAYEGQSWHDYCFHCKKCSVNLANKRFVHFHQEQVYCPDCAKKL

TRTRPLEQKLISEEDLAANDILDYKDDDDKV

Chromatograms: https://cdn.origene.com/chromatograms/mg2444_h04.zip

Restriction Sites: SgfI-MluI

Cloning Scheme:



ACCN: NM_001159704

ORF Size: 840 bp

OTI Disclaimer: The molecular sequence of this clone aligns with the gene accession number as a point of reference only. However, individual transcript sequences of the same gene can differ through naturally occurring variations (e.g. polymorphisms), each with its own valid existence. This clone is substantially in agreement with the reference, but a complete review of all prevailing variants is recommended prior to use. [More info](#)

OTI Annotation: This clone was engineered to express the complete ORF with an expression tag. Expression varies depending on the nature of the gene.

Components: The ORF clone is ion-exchange column purified and shipped in a 2D barcoded Matrix tube containing 10ug of transfection-ready, dried plasmid DNA (reconstitute with 100 ul of water).

Reconstitution Method:

1. Centrifuge at 5,000xg for 5min.
2. Carefully open the tube and add 100ul of sterile water to dissolve the DNA.
3. Close the tube and incubate for 10 minutes at room temperature.
4. Briefly vortex the tube and then do a quick spin (less than 5000xg) to concentrate the liquid at the bottom.
5. Store the suspended plasmid at -20°C. The DNA is stable for at least one year from date of shipping when stored at -20°C.

RefSeq: [NM_001159704.1](#), [NP_001153176.1](#)

RefSeq ORF: 843 bp

Locus ID: 2273

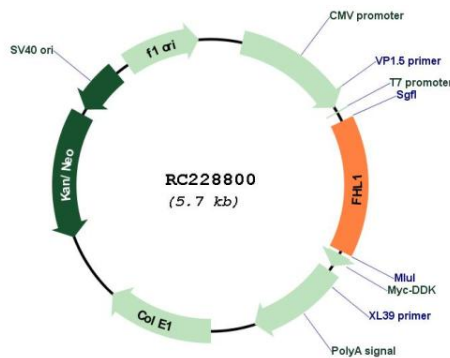
UniProt ID: [Q13642](#)

Cytogenetics: Xq26.3

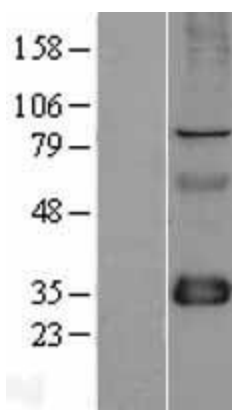
MW: 31.7 kDa

Gene Summary: This gene encodes a member of the four-and-a-half-LIM-only protein family. Family members contain two highly conserved, tandemly arranged, zinc finger domains with four highly conserved cysteines binding a zinc atom in each zinc finger. Expression of these family members occurs in a cell- and tissue-specific mode and these proteins are involved in many cellular processes. Mutations in this gene have been found in patients with Emery-Dreifuss muscular dystrophy. Multiple alternately spliced transcript variants which encode different protein isoforms have been described.[provided by RefSeq, Nov 2009]

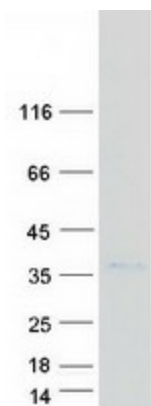
Product images:



Circular map for RC228800



Western blot validation of overexpression lysate (Cat# [LY431828]) using anti-DDK antibody (Cat# [TA50011-100]). Left: Cell lysates from untransfected HEK293T cells; Right: Cell lysates from HEK293T cells transfected with RC228800 using transfection reagent MegaTran 2.0 (Cat# [TT210002]).



Coomassie blue staining of purified FHL1 protein (Cat# [TP328800]). The protein was produced from HEK293T cells transfected with FHL1 cDNA clone (Cat# RC228800) using MegaTran 2.0 (Cat# [TT210002]).