

Product datasheet for RC228783

CDA11 (TATDN1) (NM_001146160) Human Tagged ORF Clone

Product data:

Product Type:	Expression Plasmids
Product Name:	CDA11 (TATDN1) (NM_001146160) Human Tagged ORF Clone
Tag:	Myc-DDK
Symbol:	CDA11
Synonyms:	CDA11
Mammalian Cell Selection:	Neomycin
Vector:	pCMV6-Entry (PS100001)
E. coli Selection:	Kanamycin (25 ug/mL)
ORF Nucleotide Sequence:	>RC228783 representing NM_001146160 Red=Cloning site Blue=ORF Green=Tags(s)

TTTTGTAATACGACTCACTATAGGGCGCCGGGAATTCGTCGACTGGATCCGGTACCGAGGAGATCTGCC
GCC**CGATCGCC**

ATGATTACAGGTGAAATCTACAAGACAGTAAAGATGCACTGCATTTGGCACAACAAATGGTATGTTTT
TCAGTACAGTTGGATGTCATCCTACAAGATGTGGTGAATTTGAAAAGAATAACCCGTATCTTTACTTAAA
GGAGTTGCTAAATCTTGCTGAAAACAATAAAGGGAAAGTTGTGGCAATAGGAGAATGCGGACTTGATTTT
GACCGACTGCAGTTTTGTCCCAAAGATACTCAACTCAAATATTTTGAACAAAGTTGAACTGTCAGAAC
AAACAAAATTACCAATGTTTCTTCATTGTCGAAACTCACATGCTGAATTTTGGACATAATGAAAAGAAA
TAGAGATCGGTGTAGGGGAGTGGTGCATTTGATGGTACCAAGGAAGCAGCAGCTGCTTTGATT
GACTTGGATCTTTATATAGGATTTAATGGTTGCTCACTGAAAAGTGAAGCTAATTTGGAAGTTTTGAAGT
CAATTCCTAGTAAAAATTAATGATTGAGACAGATGCACCTTGGTGTGGAGTCAAAAAGTACACATGCTGG
ATCAAAATATATAAGAACTGCATTTCTACAAAAAGAAGTGGGAAAGTGGGCACTGCTTAAAAGACAGA
AATGAACCCTGCCATATAATTCAAATATTGGAGATAATGTCAGCAGTGAGAGATGAGGATCCACTGGAAT
TAGCCAATACACTATATAACAATACTATTAAGTATTTTTCTGGAATA

ACGCGTACGCGGCCGCTCGAGCAGAACTCATCTCAGAAGAGGATCTGGCAGCAAATGATATCCTGGATT
ACAAGGATGACGACGATAAGGTTTAA



[View online »](#)

Protein Sequence: >RC228783 representing NM_001146160
 Red=Cloning site Green=Tags(s)

MITGGNLQDSKDALHLAQTNGMFFSTVGCHPTRCGEFKNNPDL YLKELLNLAENKKGKVVVAIGECGLDF
 DRLQFCPKDTQLKYFEKQFELSEQTKLPMFLHCRNSHAEFLDIMKRNDRDCVGGVVHVSFDGTKEAAAALI
 DLDLYIGFNGCSLKTEANLEVLKSIPEKLMIE TDAPWCGVKSTHAGSKYIRTAFTKWKWESGHCLKDR
 NEPCHIIQILEIMSAVRDEDPLELANTLYNNTIKVFFPGI

TRTRPLEQKLISEEDLAANDILDYKDDDDKV

Chromatograms: https://cdn.origene.com/chromatograms/ja1519_a02.zip

Restriction Sites: SgfI-MluI

Cloning Scheme:

Cloning sites used for ORF Shuttling:



* The last codon before the Stop codon of the ORF

ACCN: NM_001146160

ORF Size: 750 bp

OTI Disclaimer: The molecular sequence of this clone aligns with the gene accession number as a point of reference only. However, individual transcript sequences of the same gene can differ through naturally occurring variations (e.g. polymorphisms), each with its own valid existence. This clone is substantially in agreement with the reference, but a complete review of all prevailing variants is recommended prior to use. [More info](#)

OTI Annotation: This clone was engineered to express the complete ORF with an expression tag. Expression varies depending on the nature of the gene.

Components: The ORF clone is ion-exchange column purified and shipped in a 2D barcoded Matrix tube containing 10ug of transfection-ready, dried plasmid DNA (reconstitute with 100 ul of water).

Reconstitution Method:

1. Centrifuge at 5,000xg for 5min.
2. Carefully open the tube and add 100ul of sterile water to dissolve the DNA.
3. Close the tube and incubate for 10 minutes at room temperature.
4. Briefly vortex the tube and then do a quick spin (less than 5000xg) to concentrate the liquid at the bottom.
5. Store the suspended plasmid at -20°C. The DNA is stable for at least one year from date of shipping when stored at -20°C.

RefSeq: [NM_001146160.1](#), [NP_001139632.1](#)

RefSeq ORF: 753 bp

Locus ID: 83940

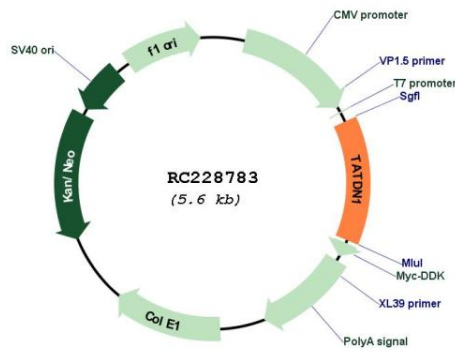
UniProt ID: [Q6P1N9](#)

Cytogenetics: 8q24.13

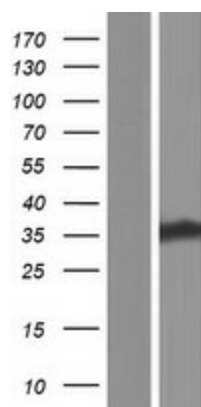
MW: 28 kDa

Gene Summary: Putative deoxyribonuclease.[UniProtKB/Swiss-Prot Function]

Product images:



Circular map for RC228783



Western blot validation of overexpression lysate (Cat# [LY431811]) using anti-DDK antibody (Cat# [TA50011-100]). Left: Cell lysates from untransfected HEK293T cells; Right: Cell lysates from HEK293T cells transfected with RC228783 using transfection reagent MegaTran 2.0 (Cat# [TT210002]).