

Product datasheet for RC228768

Prolactin (PRL) (NM_001163558) Human Tagged ORF Clone

Product data:

Product Type:	Expression Plasmids
Product Name:	Prolactin (PRL) (NM_001163558) Human Tagged ORF Clone
Tag:	Myc-DDK
Symbol:	Prolactin
Synonyms:	GHA1
Mammalian Cell Selection:	Neomycin
Vector:	pCMV6-Entry (PS100001)
E. coli Selection:	Kanamycin (25 ug/mL)
ORF Nucleotide Sequence:	>RC228768 ORF sequence Red=Cloning site Blue=ORF Green=Tags(s)

TTTTGTAATACGACTCACTATAGGGCGGCCGGAATTCGTCGACTGGATCCGGTACCGAGGAGATCTGCC
GCC**CGATCGCC**

ATGAACATCAAAGGATCGCCATGGAAAGGGTCCCTCCTGCTGCTGCTGGTGTCAAACCTGCTCCTGTGCC
AGAGCGTGGCCCCCTTGCCCATCTGTCCCGCGGGGCTGCCGATGCCAGGTGACCCTTCGAGACCTGTT
TGACCGCGCCGTCGTCTGTCCCACTACATCCATAACCTCTCCTCAGAAATGTTACGCGAATTCGATAAA
CGGTATACCCATGGCCGGGGTTCAATACCAAGGCCATCAACAGCTGCCACACTTCTCCCTTGCCACCC
CCGAAGACAAGGAGCAAGCCCAACAGATGAATCAAAAAGACTTTCTGAGCCTGATAGTCAGCATATTGCG
ATCCTGGAATGAGCCTCTGTATCATCTGGTCACGGAAGTACGTGGTATGCAAGAAGCCCCGAGGCTATC
CTATCCAAAGCTGTAGAGATTGAGGAGCAAAACCAACGGCTTCTAGAGGGCATGGAGCTGATAGTCAGCC
AGGTTTCCTGAAACCAAGAAAATGAGATCTACCCTGTCTGGTCGGGACTTCCATCCCTGCAGATGGC
TGATGAAGAGTCTCGCCTTTCTGCTTATTATAACCTGCTCCACTGCCTACGCAGGGATTACATAAAATC
GACAATTATCTAAGCTCCTGAAGTGCCGAATCATCCACAACAACACTGC

ACGCGTACGCGGCCGCTCGAGCAGAAACTCATCTCAGAAGAGGATCTGGCAGCAAATGATATCCTGGATT
ACAAGGATGACGACGATAAGGTTTAA


[View online »](#)

Protein Sequence: >RC228768 protein sequence
 Red=Cloning site Green=Tags(s)

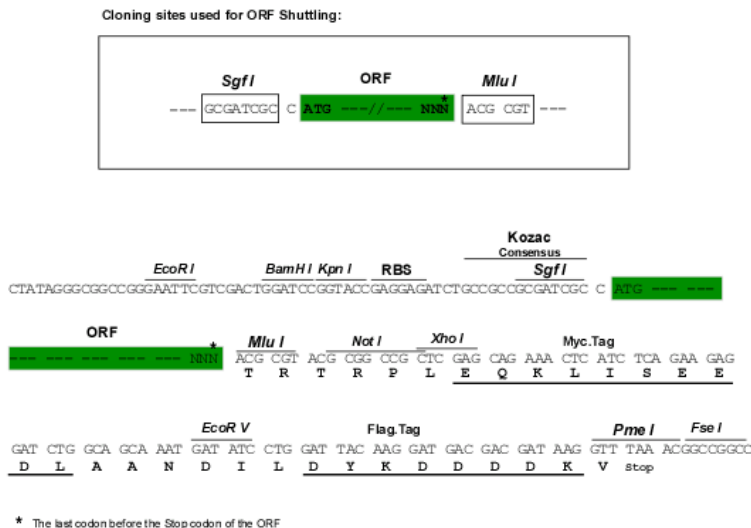
MNIKGSPPWKGSLLLLLVSNLLLCQSVAPLPICPGGAARCQVTLRDLFDRAVVLSHYIHNLSSEMFSEFDK
 RYTHGRGFITKAINSCHTSSLATPEDKEQAQMNQKDFLSLIVSILRSWNEPLYHLVTEVRGMQEAPEAI
 LSKAVEIEEQTKRLLEGMELIVSQVHPETKENEIYPVWSGLPSLQMADEESRLSAYYNLLHCLRRDSHKI
 DNYI K I I KCRTHNNNC

TRTRPLEOKLISEEDLAANDILDYKDDDDKV

Chromatograms: https://cdn.origene.com/chromatograms/mk6069_c11.zip

Restriction Sites: Sgfl-MluI

Cloning Scheme:



ACCN: NM 001163558

ORF Size: 681 bp

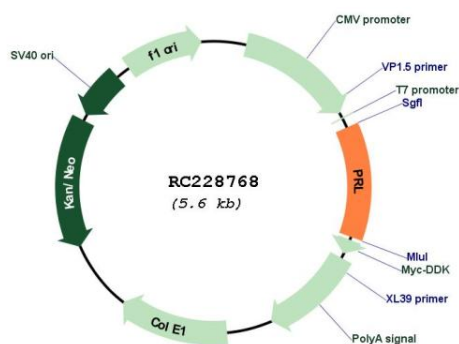
OTI Disclaimer: Due to the inherent nature of this plasmid, standard methods to replicate additional amounts of DNA in E. coli are highly likely to result in mutations and/or rearrangements. Therefore, OriGene does not guarantee the capability to replicate this plasmid DNA. Additional amounts of DNA can be purchased from OriGene with batch-specific, full-sequence verification at a reduced cost. Please contact our customer care team at custsupport@origene.com or by calling 301.340.3188 option 3 for pricing and delivery.

The molecular sequence of this clone aligns with the gene accession number as a point of reference only. However, individual transcript sequences of the same gene can differ through naturally occurring variations (e.g. polymorphisms), each with its own valid existence. This clone is substantially in agreement with the reference, but a complete review of all prevailing variants is recommended prior to use. [More info](#)

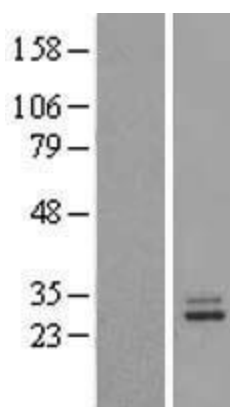
OTI Annotation: This clone was engineered to express the complete ORF with an expression tag. Expression varies depending on the nature of the gene.

Components:	The ORF clone is ion-exchange column purified and shipped in a 2D barcoded Matrix tube containing 10ug of transfection-ready, dried plasmid DNA (reconstitute with 100 ul of water).
Reconstitution Method:	<ol style="list-style-type: none"> 1. Centrifuge at 5,000xg for 5min. 2. Carefully open the tube and add 100ul of sterile water to dissolve the DNA. 3. Close the tube and incubate for 10 minutes at room temperature. 4. Briefly vortex the tube and then do a quick spin (less than 5000xg) to concentrate the liquid at the bottom. 5. Store the suspended plasmid at -20°C. The DNA is stable for at least one year from date of shipping when stored at -20°C.
Note:	Plasmids are not sterile. For experiments where strict sterility is required, filtration with 0.22um filter is required.
RefSeq:	NM_001163558.3
RefSeq Size:	1043 bp
RefSeq ORF:	684 bp
Locus ID:	5617
UniProt ID:	P01236
Cytogenetics:	6p22.3
Protein Families:	Druggable Genome, Secreted Protein
Protein Pathways:	Cytokine-cytokine receptor interaction, Jak-STAT signaling pathway, Neuroactive ligand-receptor interaction
MW:	25.9 kDa
Gene Summary:	This gene encodes the anterior pituitary hormone prolactin. This secreted hormone is a growth regulator for many tissues, including cells of the immune system. It may also play a role in cell survival by suppressing apoptosis, and it is essential for lactation. Alternative splicing results in multiple transcript variants that encode the same protein. [provided by RefSeq, Aug 2011]

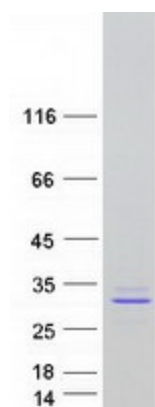
Product images:



Circular map for RC228768



Western blot validation of overexpression lysate (Cat# [LY431796]) using anti-DDK antibody (Cat# [TA50011-100]). Left: Cell lysates from untransfected HEK293T cells; Right: Cell lysates from HEK293T cells transfected with RC228768 using transfection reagent MegaTran 2.0 (Cat# [TT210002]).



Coomassie blue staining of purified PRL protein (Cat# [TP328768]). The protein was produced from HEK293T cells transfected with PRL cDNA clone (Cat# RC228768) using MegaTran 2.0 (Cat# [TT210002]).