

Product datasheet for **RC228767**

C21orf62 (NM_001162496) Human Tagged ORF Clone

Product data:

Product Type:	Expression Plasmids
Product Name:	C21orf62 (NM_001162496) Human Tagged ORF Clone
Tag:	Myc-DDK
Symbol:	C21orf62
Synonyms:	B37; C21orf120; PRED81
Mammalian Cell Selection:	Neomycin
Vector:	pCMV6-Entry (PS100001)
E. coli Selection:	Kanamycin (25 ug/mL)
ORF Nucleotide Sequence:	>RC228767 representing NM_001162496 Red=Cloning site Blue=ORF Green=Tags(s)

TTTTGTAATACGACTCACTATAGGGCGGCCGGAATTCGTCGACTGGATCCGGTACCGAGGAGATCTGCC
GCC**CGATCGCC**

ATGGCACCACCTTCCAGGCACTGTCTTCTTGATCAGCACTCTGGGTGTCTTTGCACTTAAGTCTTCA
CCAAAGGTCAGAAGAACAGCAGCTCATCTTCAAGGGAAAACACCATTCGGAAGTGCAGCTGTTCTGC
GGACATCCGGGATTGTGACTACAGTTTGGCCAACCTGATGTGCAACTGTAAAACCGTCTGCCCTTGCA
GTAGAGCGAACCACTACAATGGCCATCTGACCATCTGGTTCACGGACACATCTGCGCTGGGCCACCTGC
TGAAGTTCACGCTGGTCCAAGACCTGAAGCTTTCCCTGTGCAGCACCAACTCTCCCACTGAATACCT
GGCATTGTGGTCTGAAGAGGCTGCGCATCAACATGGAGGCCAAGCATCCCTTCCAGAGCAGAGCTTA
CTCATCCATAGCGGTGGGACAGTGACTCCAGAGAGAAGCCATGTGGTTACACAAGGCTGGCAGCCAT
GTATGTATATCTCATTCTTAGATATGGCTTTTCAACAGGGACTCAGCCTTAAAATCATATAGTATTGA
AAACGTTACCAGCATTGCCAACAACTTTCTGACTTTTCTTACTTTAGAACCTTCCCAATGCCAAGCAAC
AAAAGCTATGTTGTCACATTTATTTAC

ACGCGTACGCGGCCGCTCGAGCAGAACTCATCTCAGAAGAGGATCTGGCAGCAATGATATCTGGATT
ACAAGGATGACGACGATAAGGTTTAA



[View online »](#)

Protein Sequence: >RC228767 representing NM_001162496
Red=Cloning site Green=Tags(s)

MAPPSRHCLLLISTLGVFALNCFKQGKNSTLIFTRENTIRNCSADIRDCDYSLANLMCNCKTVLPLA
 VERTSYNGHLTIWFTDTSALGHLLNFTLVQDLKLSLCSTNTLPTEYLAICGLKRLRINMEAKHPFPEQSL
 LIHSGGSDSREKPMWLHKGWQPCMYISFLDMALFNDRSALKSYSIENVTSIANNFPDFSYFRTFFMPSPN
 KSYVVTFIY

TRTRPLEQKLISEEDLAANDILDYKDDDDKV

Chromatograms: https://cdn.origene.com/chromatograms/mg4394_d07.zip

Restriction Sites: SgfI-MluI

Cloning Scheme:



ACCN: NM_001162496

ORF Size: 657 bp

OTI Disclaimer: The molecular sequence of this clone aligns with the gene accession number as a point of reference only. However, individual transcript sequences of the same gene can differ through naturally occurring variations (e.g. polymorphisms), each with its own valid existence. This clone is substantially in agreement with the reference, but a complete review of all prevailing variants is recommended prior to use. [More info](#)

OTI Annotation: This clone was engineered to express the complete ORF with an expression tag. Expression varies depending on the nature of the gene.

Components: The ORF clone is ion-exchange column purified and shipped in a 2D barcoded Matrix tube containing 10ug of transfection-ready, dried plasmid DNA (reconstitute with 100 ul of water).

Reconstitution Method:

1. Centrifuge at 5,000xg for 5min.
2. Carefully open the tube and add 100ul of sterile water to dissolve the DNA.
3. Close the tube and incubate for 10 minutes at room temperature.
4. Briefly vortex the tube and then do a quick spin (less than 5000xg) to concentrate the liquid at the bottom.
5. Store the suspended plasmid at -20°C. The DNA is stable for at least one year from date of shipping when stored at -20°C.

RefSeq: [NM_001162496.3](#)

RefSeq ORF: 660 bp

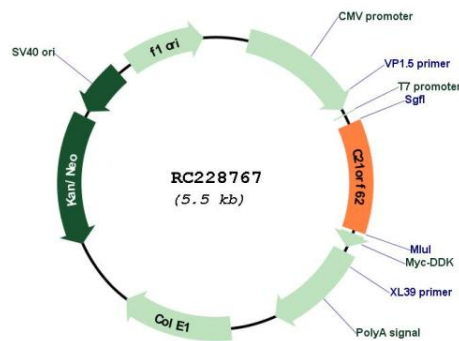
Locus ID: 56245

UniProt ID: [Q9NYP8](#)

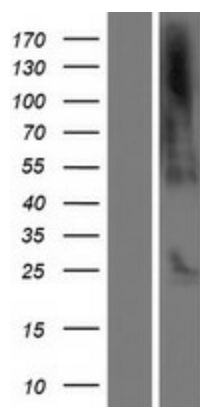
Cytogenetics: 21q22.11

MW: 24.7 kDa

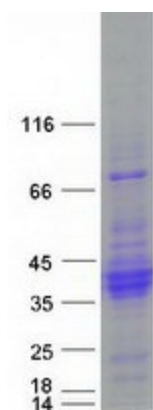
Product images:



Circular map for RC228767



Western blot validation of overexpression lysate (Cat# [LY431795]) using anti-DDK antibody (Cat# [TA50011-100]). Left: Cell lysates from untransfected HEK293T cells; Right: Cell lysates from HEK293T cells transfected with RC228767 using transfection reagent MegaTran 2.0 (Cat# [TT210002]).



Coomassie blue staining of purified C21orf62 protein (Cat# [TP328767]). The protein was produced from HEK293T cells transfected with C21orf62 cDNA clone (Cat# RC228767) using MegaTran 2.0 (Cat# [TT210002]).