

## Product datasheet for RC228766

### C21orf62 (NM\_001162495) Human Tagged ORF Clone

#### Product data:

Product Type:	Expression Plasmids
Product Name:	C21orf62 (NM_001162495) Human Tagged ORF Clone
Tag:	Myc-DDK
Symbol:	C21orf62
Synonyms:	B37; C21orf120; PRED81
Mammalian Cell Selection:	Neomycin
Vector:	pCMV6-Entry (PS100001)
E. coli Selection:	Kanamycin (25 ug/mL)
ORF Nucleotide Sequence:	>RC228766 representing NM_001162495 Red=Cloning site Blue=ORF Green=Tags(s)

TTTTGTAATACGACTCACTATAGGGCGGCCGGAATTCGTCGACTGGATCCGGTACCGAGGAGATCTGCC  
GCC**CGATCGCC**

ATGGCACCACCTTCCAGGCACTGTCTTCTTGATCAGCACTCTGGGTGTCTTTGCACTTAAGTCTTCA  
CCAAAGGTCAGAAGAACAGCAGCTCATCTTCAAGGGAAAACACCATTCGGAAGTGCAGCTGTTCTGC  
GGACATCCGGGATTGTGACTACAGTTGGCCAACCTGATGTGCAACTGTAAAACCGTCTGCCCTTGCA  
GTAGAGCGAACCACTACAATGGCCATCTGACCATCTGGTTCACGGACACATCTGCGCTGGGCCACCTGC  
TGAAGTTCACGCTGGTCCAAGACCTGAAGCTTTCCCTGTGCAGCACCAACTCTCCCACTGAATACCT  
GGCTATTTGTGGTCTGAAGAGGCTGCGCATCAACATGGAGGCCAAGCATCCCTTCCAGAGCAGAGCTTA  
CTCATCCATAGCGGTGGGACAGTGACTCCAGAGAGAAGCCCATGTGGTTACACAAGGCTGGCAGCCAT  
GTATGTATATCTATTCTTAGATATGGCTTTTCAACAGGGACTCAGCCTTAAAATCATATAGTATTGA  
AAACGTTACCAGCATTGCCAACAACTTTCTGACTTTTCTTACTTTAGAACCTTCCAATGCCAAGCAAC  
AAAAGCTATGTTGTCACATTTATTTAC

**ACGCGT**ACGCGGCCGCTCGAGCAGAACTCATCTCAGAAGAGGATCTGGCAGCAAATGATATCTGGATT  
ACAAGGATGACGACGATAAGGTTTAA



[View online »](#)

**Protein Sequence:** >RC228766 representing NM\_001162495  
Red=Cloning site Green=Tags(s)

MAPPSRHCLLLISTLGVFALNCFKQGKNSTLIFTRENTIRNCSADIRDCDYSLANLMCNCKTVLPLA  
 VERTSYNGHLTIWFTDTSALGHLLNFTLVQDLKLSLCSTNTLPTEYLAICGLKRLRINMEAKHPFPEQSL  
 LIHSGGSDSREKPMWLHKGWQPCMYISFLDMALFNDRSALKSYSIENVTSIANNFPDFSYFRTFPMPSPN  
 KSYVVTFIY

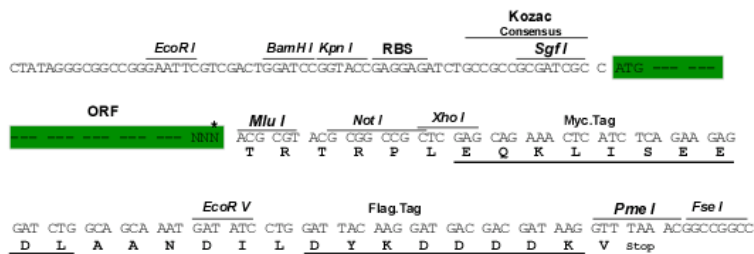
TRTRPLEQKLISEEDLAANDILDYKDDDDKV

**Chromatograms:** [https://cdn.origene.com/chromatograms/mg4394\\_d07.zip](https://cdn.origene.com/chromatograms/mg4394_d07.zip)

**Restriction Sites:** SgfI-MluI

**Cloning Scheme:**

Cloning sites used for ORF Shuttling:



**ACCN:** NM\_001162495

**ORF Size:** 657 bp

**OTI Disclaimer:** The molecular sequence of this clone aligns with the gene accession number as a point of reference only. However, individual transcript sequences of the same gene can differ through naturally occurring variations (e.g. polymorphisms), each with its own valid existence. This clone is substantially in agreement with the reference, but a complete review of all prevailing variants is recommended prior to use. [More info](#)

**OTI Annotation:** This clone was engineered to express the complete ORF with an expression tag. Expression varies depending on the nature of the gene.

**Components:** The ORF clone is ion-exchange column purified and shipped in a 2D barcoded Matrix tube containing 10ug of transfection-ready, dried plasmid DNA (reconstitute with 100 ul of water).

**Reconstitution Method:**

1. Centrifuge at 5,000xg for 5min.
2. Carefully open the tube and add 100ul of sterile water to dissolve the DNA.
3. Close the tube and incubate for 10 minutes at room temperature.
4. Briefly vortex the tube and then do a quick spin (less than 5000xg) to concentrate the liquid at the bottom.
5. Store the suspended plasmid at -20°C. The DNA is stable for at least one year from date of shipping when stored at -20°C.

**RefSeq:** [NM\\_001162495.3](#)

**RefSeq ORF:** 660 bp

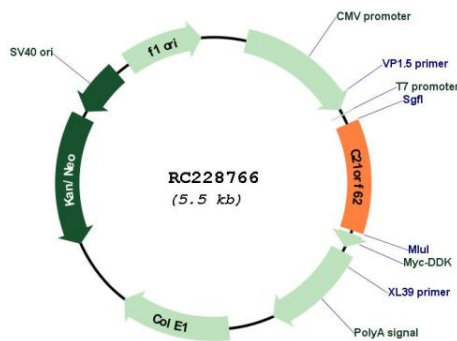
**Locus ID:** 56245

**UniProt ID:** [Q9NYP8](#)

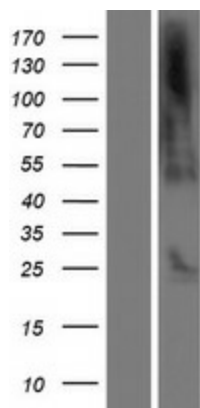
**Cytogenetics:** 21q22.11

**MW:** 24.7 kDa

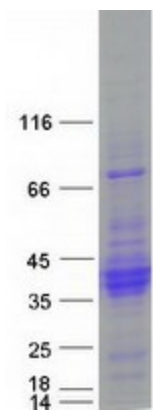
**Product images:**



Circular map for RC228766



Western blot validation of overexpression lysate (Cat# [LY431795]) using anti-DDK antibody (Cat# [TA50011-100]). Left: Cell lysates from untransfected HEK293T cells; Right: Cell lysates from HEK293T cells transfected with [RC228767] using transfection reagent MegaTran 2.0 (Cat# [TT210002]).



Coomassie blue staining of purified C21orf62 protein (Cat# [TP328766]). The protein was produced from HEK293T cells transfected with C21orf62 cDNA clone (Cat# RC228766) using MegaTran 2.0 (Cat# [TT210002]).