

## Product datasheet for **RC228765**

### **NNT1 (CLCF1) (NM\_001166212) Human Tagged ORF Clone**

#### Product data:

Product Type:	Expression Plasmids
Product Name:	NNT1 (CLCF1) (NM_001166212) Human Tagged ORF Clone
Tag:	Myc-DDK
Symbol:	NNT1
Synonyms:	BSF-3; BSF3; CISS2; CLC; NNT-1; NNT1; NR6
Mammalian Cell Selection:	Neomycin
Vector:	pCMV6-Entry (PS100001)
E. coli Selection:	Kanamycin (25 ug/mL)
ORF Nucleotide Sequence:	>RC228765 representing NM_001166212 Red=Cloning site Blue=ORF Green=Tags(s)

TTTTGTAATACGACTCACTATAGGGCGCCGGGAATTCGTCGACTGGATCCGGTACCGAGGAGATCTGCC  
GCC**CGATCGCC**

ATGGACCTCCGAGCAGGGGACTCGTGGGGATGTTAGCGTGCCTGTGCACGGTGTCTGGCACCTCCCTG  
CAGTGCCAGCTCTCAATCGCACAGGGGACCCAGGGCCTGGCCCTCCATCCAGAAAACCTATGACCTCAC  
CCGCTACCTGGAGCACCAACTCCGAGCTTGGCTGGGACCTATCTGAACTACCTGGGCCCCCTTCAAC  
GAGCCAGACTTCAACCTCCCCGCTGGGGCAGAGACTCTGCCAGGGCCACTGTTGACTTGGAGGTGT  
GGCGAAGCCTCAATGACAACTGCGGCTGACCCAGAAGTACGAGGCCTACAGCCACCTTCTGTGTTACTT  
GGTGGCCTCAACCGTCAGGCTGCCACTGCTGAGCTGCGCCGAGCCTGGCCACTTCTGCACCAGCCTC  
CAGGGCCTGCTGGCAGCATTGCGGGCGTCATGGCAGCTCTGGGCTACCCACTGCCCCAGCCGCTGCCTG  
GGACTGAACCACTTGGACTCCTGGCCCTGCCACAGTGAAGTCTCCAGAAAGATGGACGACTTCTGGCT  
GCTGAAGGAGCTGCAGACCTGGCTGTGGCGCTCGGCCAAGGACTTCAACCGGCTCAAGAAGAAGATGCAG  
CCTCCAGCAGCTGCAGTCAACCTGCACCTGGGGGCTCATGGCTTC

**ACGCGT**ACGCGGGCCGCTCGAGCAGAAAACCTCATCTCAGAAGAGGATCTGGCAGCAAATGATATCCTGGATT  
ACAAGGATGACGACGATAAGGTTTAA



[View online »](#)

**Protein Sequence:** >RC228765 representing NM\_001166212  
 Red=Cloning site Green=Tags(s)

MDLRAGDSWGLACLCTVLWHLPAVPALNRTGDPGPGPSIQKTYDLTRYLEHQLRSLAGTYLNYLGPPFN  
 EPDFNPPRLGAETLPRATVDLEVWRSNDKLRLTQNYEAYSHLLCYLRGLNRQAATAELRRSLAHFCTSL  
 QGLLGSIAGVMAALGYPLPQPLPGTEPTWTPGPAHSDFLQKMDDFWLLKELQTWLWRSKDFNRLKKMKQ  
 PPAAAVTLHLGAHGF

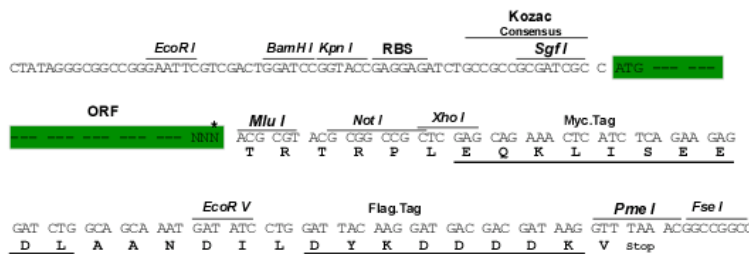
TRTRPLEQKLISEEDLAANDILDYKDDDDKV

**Chromatograms:** [https://cdn.origene.com/chromatograms/ja1433\\_f06.zip](https://cdn.origene.com/chromatograms/ja1433_f06.zip)

**Restriction Sites:** SgfI-MluI

**Cloning Scheme:**

Cloning sites used for ORF Shuttling:



\* The last codon before the Stop codon of the ORF

**ACCN:** NM\_001166212

**ORF Size:** 675 bp

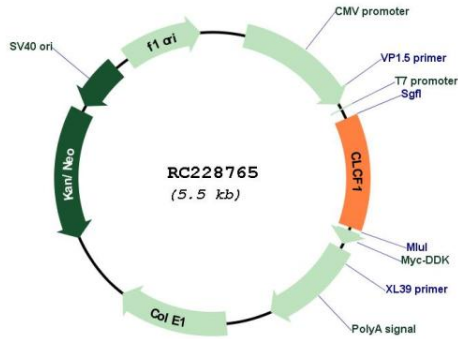
**OTI Disclaimer:** The molecular sequence of this clone aligns with the gene accession number as a point of reference only. However, individual transcript sequences of the same gene can differ through naturally occurring variations (e.g. polymorphisms), each with its own valid existence. This clone is substantially in agreement with the reference, but a complete review of all prevailing variants is recommended prior to use. [More info](#)

**OTI Annotation:** This clone was engineered to express the complete ORF with an expression tag. Expression varies depending on the nature of the gene.

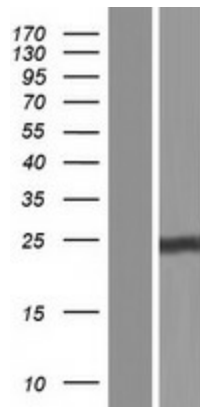
**Components:** The ORF clone is ion-exchange column purified and shipped in a 2D barcoded Matrix tube containing 10ug of transfection-ready, dried plasmid DNA (reconstitute with 100 ul of water).

<b>Reconstitution Method:</b>	<ol style="list-style-type: none"><li>1. Centrifuge at 5,000xg for 5min.</li><li>2. Carefully open the tube and add 100ul of sterile water to dissolve the DNA.</li><li>3. Close the tube and incubate for 10 minutes at room temperature.</li><li>4. Briefly vortex the tube and then do a quick spin (less than 5000xg) to concentrate the liquid at the bottom.</li><li>5. Store the suspended plasmid at -20°C. The DNA is stable for at least one year from date of shipping when stored at -20°C.</li></ol>
<b>RefSeq ORF:</b>	648 bp
<b>Locus ID:</b>	23529
<b>UniProt ID:</b>	<a href="#">Q9UBD9</a>
<b>Cytogenetics:</b>	11q13.2
<b>Protein Families:</b>	Druggable Genome, Secreted Protein
<b>Protein Pathways:</b>	Cytokine-cytokine receptor interaction, Jak-STAT signaling pathway
<b>MW:</b>	25.18 kDa
<b>Gene Summary:</b>	<p>This gene is a member of the glycoprotein (gp)130 cytokine family and encodes cardiotrophin-like cytokine factor 1 (CLCF1). CLCF1 forms a heterodimer complex with cytokine receptor-like factor 1 (CRLF1). This dimer competes with ciliary neurotrophic factor (CNTF) for binding to the ciliary neurotrophic factor receptor (CNTFR) complex, and activates the Jak-STAT signaling cascade. CLCF1 can be actively secreted from cells by forming a complex with soluble type I CRLF1 or soluble CNTFR. CLCF1 is a potent neurotrophic factor, B-cell stimulatory agent and neuroendocrine modulator of pituitary corticotroph function. Defects in CLCF1 cause cold-induced sweating syndrome 2 (CISS2). This syndrome is characterized by a profuse sweating after exposure to cold as well as congenital physical abnormalities of the head and spine. Alternative splicing results in multiple transcript variants encoding distinct isoforms.[provided by RefSeq, Oct 2009]</p>

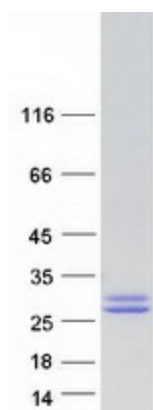
Product images:



Circular map for RC228765



Western blot validation of overexpression lysate (Cat# [LY431793]) using anti-DDK antibody (Cat# [TA50011-100]). Left: Cell lysates from untransfected HEK293T cells; Right: Cell lysates from HEK293T cells transfected with RC228765 using transfection reagent MegaTran 2.0 (Cat# [TT210002]).



Coomassie blue staining of purified CLCF1 protein (Cat# [TP328765]). The protein was produced from HEK293T cells transfected with CLCF1 cDNA clone (Cat# RC228765) using MegaTran 2.0 (Cat# [TT210002]).