

Product datasheet for **RC228735**

alpha Synuclein (SNCA) (NM_001146054) Human Tagged ORF Clone

Product data:

Product Type: Expression Plasmids
Product Name: alpha Synuclein (SNCA) (NM_001146054) Human Tagged ORF Clone
Tag: Myc-DDK
Symbol: alpha Synuclein
Synonyms: NACP; PARK1; PARK4; PD1
Mammalian Cell Selection: Neomycin
Vector: pCMV6-Entry (PS100001)
E. coli Selection: Kanamycin (25 ug/mL)
ORF Nucleotide Sequence: >RC228735 representing NM_001146054
Red=Cloning site Blue=ORF Green=Tags(s)

TTTTGTAATACGACTCACTATAGGGCGGCCGGAATTCGTCGACTGGATCCGGTACCGAGGAGATCTGCC
GCC**CGATCGCC**

ATGGATGTATTTCATGAAAGGACTTTCAAAGGCCAAGGAGGGAGTTGTGGCTGCTGCTGAGAAAACCAAAC
AGGGTGTGGCAGAAGCAGCAGGAAAGACAAAAGAGGGTGTCTCTATGTAGGCTCCAAAACCAAGGAGGG
AGTGGTGCATGGTGTGGCAACAGTGGCTGAGAAGACCAAAGCAAGTGACAAATGTTGGAGGAGCAGTG
GTGACGGGTGTGACAGCAGTAGCCAGAAGACAGTGGAGGGAGCAGGGAGCATTGCAGCAGCCACTGGCT
TTGTCAAAAAGGACCAGTTGGCAAGAATGAAGAAGGAGCCCCACAGGAAGGAATTCTGGAAGATATGCC
TGTGGATCCTGACAATGAGGCTTATGAAATGCCTTCTGAGGAAGGGTATCAAGACTACGAACCTGAAGCC

ACGCGTACGCGGCCGCTCGAGCAGAACTCATCTCAGAAGAGGATCTGGCAGCAAATGATATCCTGGATT
ACAAGGATGACGACGATAAGGTTTAA

Protein Sequence: >RC228735 representing NM_001146054
Red=Cloning site Green=Tags(s)

MDVFMKGLSKAKEGVVAAAEKTKQGVAAEAGKTKEGVL YVGSKTKEGVVHGVAATVAEKTKEQVTNVGGAV
VTGVTAVAQKTVEGAGSIAAATGFVKDQLGKNEEGAPQEGILEDMPVDPDNEAYEMPSEEGYQDYEPEA

TRTRPLEQKLISEEDLAANDILDYKDDDDKV

Chromatograms: https://cdn.origene.com/chromatograms/mg2667_b04.zip

Restriction Sites: SgfI-MluI

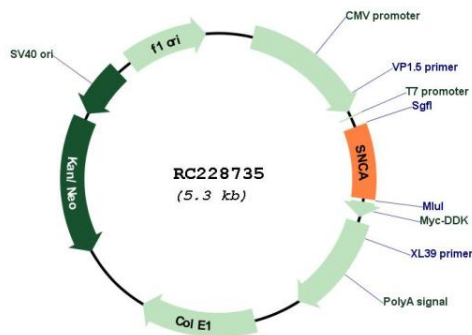


[View online »](#)

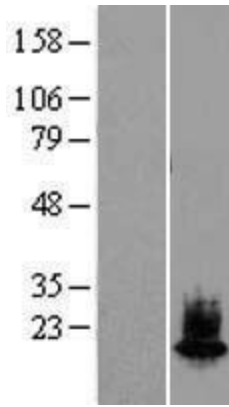
RefSeq: [NM_001146054.2](#)
RefSeq ORF: 423 bp
Locus ID: 6622
UniProt ID: [P37840](#)
Cytogenetics: 4q22.1
Protein Families: Druggable Genome
Protein Pathways: Alzheimer's disease, Parkinson's disease
MW: 14.3 kDa

Gene Summary: Alpha-synuclein is a member of the synuclein family, which also includes beta- and gamma-synuclein. Synucleins are abundantly expressed in the brain and alpha- and beta-synuclein inhibit phospholipase D2 selectively. SNCA may serve to integrate presynaptic signaling and membrane trafficking. Defects in SNCA have been implicated in the pathogenesis of Parkinson disease. SNCA peptides are a major component of amyloid plaques in the brains of patients with Alzheimer's disease. Alternatively spliced transcripts encoding different isoforms have been identified for this gene. [provided by RefSeq, Feb 2016]

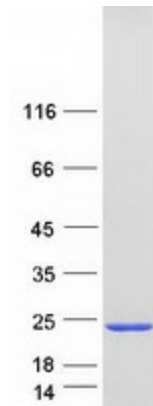
Product images:



Circular map for RC228735



Western blot validation of overexpression lysate (Cat# [LY431764]) using anti-DDK antibody (Cat# [TA50011-100]). Left: Cell lysates from untransfected HEK293T cells; Right: Cell lysates from HEK293T cells transfected with [RC228736] using transfection reagent MegaTran 2.0 (Cat# [TT210002]).



Coomassie blue staining of purified SNCA protein (Cat# [TP328735]). The protein was produced from HEK293T cells transfected with SNCA cDNA clone (Cat# RC228735) using MegaTran 2.0 (Cat# [TT210002]).