

## Product datasheet for **RC228722**

### **FXYD6 (NM\_001164831) Human Tagged ORF Clone**

#### Product data:

**Product Type:** Expression Plasmids  
**Product Name:** FXYD6 (NM\_001164831) Human Tagged ORF Clone  
**Tag:** Myc-DDK  
**Symbol:** FXYD6  
**Mammalian Cell Selection:** Neomycin  
**Vector:** pCMV6-Entry (PS100001)  
**E. coli Selection:** Kanamycin (25 ug/mL)  
**ORF Nucleotide Sequence:** >RC228722 ORF sequence  
Red=Cloning site Blue=ORF Green=Tags(s)

TTTTGTAATACGACTCACTATAGGGCGGCCGGAATTCGTCGACTGGATCCGGTACCGAGGAGATCTGCC  
GCC**CGATCGCC**

ATGGAGTTGGTGTCTTCTCTGCAGCCTGCTGGCCCCATGGTCTGGCCAGTGCAGCTGAAAAGG  
AGAAGGAAATGGACCCTTTTCATTATGATTACCAGACCCTGAGGATTGGGGACTGGTGTTCGCTGTGGT  
CCTTCTCGGTTGGGATCCTCCTTATCCTAAGTCGCAGGTGCAAGTGCAGTTTCAATCAGAAGCCCCGG  
GCCCCAGGAGATGAGGAAGCCCAGGTGGAGAACCTCATCACCCCAATGCAACAGAGCCCCAGAAAGCAG  
AGAAC

**ACGCGT**ACGCGGCCGCTCGAGCAGAACTCATCTCAGAAGAGGATCTGGCAGCAAATGATATCCTGGATT  
ACAAGGATGACGACGATAAGGTTTAA

**Protein Sequence:** >RC228722 protein sequence  
Red=Cloning site Green=Tags(s)  
MELVLFVFLCSLLAPMVLASAAEKEKEMDPFHVDYQTLRIGGLVFAVVLFSVIGILLILSRRCKCSFNQKPR  
APGDEEAQVENLITANATEPQKAEN

**TR**TRPLEQKLISEEDLAANDILDYKDDDDKV

**Chromatograms:** [https://cdn.origene.com/chromatograms/mk6266\\_g03.zip](https://cdn.origene.com/chromatograms/mk6266_g03.zip)

**Restriction Sites:** Sgfl-MluI



[View online »](#)

**Cloning Scheme:**


**ACCN:** NM\_001164831

**ORF Size:** 285 bp

**OTI Disclaimer:** The molecular sequence of this clone aligns with the gene accession number as a point of reference only. However, individual transcript sequences of the same gene can differ through naturally occurring variations (e.g. polymorphisms), each with its own valid existence. This clone is substantially in agreement with the reference, but a complete review of all prevailing variants is recommended prior to use. [More info](#)

**OTI Annotation:** This clone was engineered to express the complete ORF with an expression tag. Expression varies depending on the nature of the gene.

**Components:** The ORF clone is ion-exchange column purified and shipped in a 2D barcoded Matrix tube containing 10ug of transfection-ready, dried plasmid DNA (reconstitute with 100 ul of water).

- Reconstitution Method:**
1. Centrifuge at 5,000xg for 5min.
  2. Carefully open the tube and add 100ul of sterile water to dissolve the DNA.
  3. Close the tube and incubate for 10 minutes at room temperature.
  4. Briefly vortex the tube and then do a quick spin (less than 5000xg) to concentrate the liquid at the bottom.
  5. Store the suspended plasmid at -20°C. The DNA is stable for at least one year from date of shipping when stored at -20°C.

**RefSeq:** [NM\\_001164831.3](#)

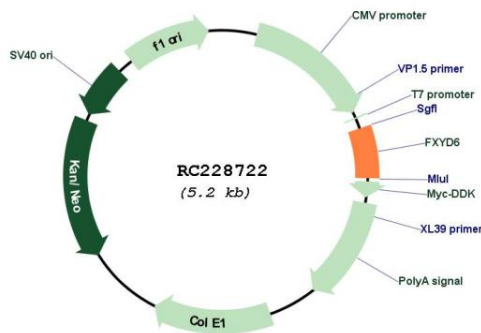
**RefSeq Size:** 1804 bp

**RefSeq ORF:** 288 bp

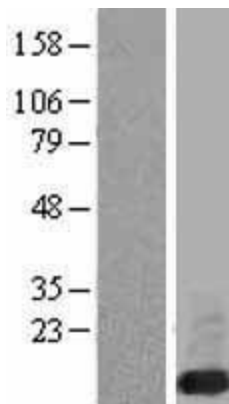
**Locus ID:** 53826  
**UniProt ID:** [Q9H0Q3](#)  
**Cytogenetics:** 11q23.3  
**Protein Families:** Ion Channels: Other, Transmembrane  
**MW:** 10.5 kDa

**Gene Summary:** This gene encodes a member of the FXYD family of transmembrane proteins. This particular protein encodes phosphohippolin, which likely affects the activity of Na,K-ATPase. Multiple alternatively spliced transcript variants encoding the same protein have been described. Related pseudogenes have been identified on chromosomes 10 and X. Read-through transcripts have been observed between this locus and the downstream sodium/potassium-transporting ATPase subunit gamma (FXYD2, GeneID 486) locus.[provided by RefSeq, Feb 2011]

### Product images:



Circular map for RC228722



Western blot validation of overexpression lysate (Cat# [LY431751]) using anti-DDK antibody (Cat# [TA50011-100]). Left: Cell lysates from untransfected HEK293T cells; Right: Cell lysates from HEK293T cells transfected with [RC228723] using transfection reagent MegaTran 2.0 (Cat# [TT210002]).