

Product datasheet for RC228700

PLXNB3 (NM_001163257) Human Tagged ORF Clone

Product data:

Product Type:	Expression Plasmids
Product Name:	PLXNB3 (NM_001163257) Human Tagged ORF Clone
Tag:	Myc-DDK
Symbol:	PLXNB3
Synonyms:	PLEXB3; PLEXR; PLXN6
Mammalian Cell Selection:	Neomycin
Vector:	pCMV6-Entry (PS100001)
E. coli Selection:	Kanamycin (25 ug/mL)
ORF Nucleotide Sequence:	>RC228700 representing NM_001163257 Red=Cloning site Blue=ORF Green=Tags(s)

TTTTGTAATACGACTCACTATAGGGCGGCCGGAATTCGTCGACTGGATCCGGTACCGAGGAGATCTGCC
GCC**CGATCGCC**

ATGGAGCTCACCCCTGCCTCTTCGCTGACTTGCTCCTTGCTCAGCCCGGGCTGCCTGGCTCTTCCCCC
AGCTGCGGAGGGTCTCCTTGCAGCCGGCCCTGGCTGCCAAGGCCCGTGATGGCTCGCTGGCTCC
CTTCGGCTCTGCCTCCTCCTGTGCTGTCCCCACCGCCACTGCCCTTGACAGGGGCCATCGCTTC
TCCGCACCTAATACCACTCTCAACCACTGGCACTGGCACCTGGCCGAGGCACACTCTATGTCGGCGCAG
TGAACCGCTCTCCAGCTCAGCCCGAGCTGCAGCTCGAGGCCGTGGCTGTCAGTGGCCCTGTAATCGA
CAGCCCTGACTGCGTGCCCTTCGGTGACCCAGCCGAGTGCCACAGGCCAGCTCACTGACAATGCCAAC
CAGCTGCTGCTGGTGAGCAGCCGCGCCAGGAGCTGGTGGCTGCGGGCAGGTGCGGCAGGGCGTGTGTG
AGACACGGCGCCTTGGGGATGTGGCCGAGGTGCTGTACCAGGCTGAGGACCTGGTGACGGGCAGTTTGT
GGCTGCCAATACCCCGGAGTGGCAACGGTGGGGCTGGTGGTGCCTTGGCCGGCCGGGACCTCTGCTT
GTGGCCAGAGGCTGGCGGGCAAGCTGTGCGCAGGGGTGCCACCCTGGCCATCCGCCAGCTGGCCGGGT
CTCAGCCCTTCTCCAGCAGGGCCTGGGCCGCTGGTGGTGGGCGACTTCTCCGACTACAACAACAGCTA
CGTCGGGGCCTTGGCGACGCCGCTCCGCCTACTTCGTGTTCCGCCCGCGGGGCCCGGGCCAGGCT
GAGTACCGCTCTACGTGGCCCGCTGCTGCTGGGGACACCAACCTGTACTCCTACGTGGAGGTCCCCC
TCGCCTGCCAGGGCCAGGCCTCATCCAGGCCGCTTCTTGGCCGGGCACCTTGTAGGGGTGTTTGC
CGCGGGCCCAAGGGGCACCCAGGCGCGCTCTGTGCCTTCCCCATGGTGGAGCTGGGTGCCAGCATGGAG
CAGGCCCGGAGACTCTGTACACGGCGGGCGGGGCCAGCGGCGCAGAGGAAGCCACCGTGGAGT
ACGGCGTCACGTCGCGCTGCGTACCCTGCCCTTGATTCCCCGAGTCTGTAACCTGTGGCGACGAGCA
CACCCCGAGCCCATTTGCTGGCCGCCAGCCCTGGAGGTCAGCCTCTGCTGAAGCTCGGGCAGCCGGTC
AGCGCCGTGGCAGCTCTCCAGGCAGATGGGCACATGATAGCCTTCTGGGGACACCCAGGGCCAGCTGT
ACAAGGTCTTCTCCACGGCTCCAGGGCCAGGTTTACCCTCCAGCAAGTGGGGCCTCCAGGCTCAGC
CATCAGCCAGACCTGCTGCTGGACAGCAGTGGCAGTCACCTCTATGTCCTGACTGCCACCAGGTGGAC



[View online »](#)

CGGATACCTGTGGCAGCCTGCCCCAGTTCCTGACTGTGCCAGCTGCCTCCAGGCCAGGACCCGCTGT
 GTGGCTGGTGTCTCCAGGGCAGGTGTACCCGGAAGGGCCAGTGCGGGCGGGCAGGCCAGCTGAACCA
 GTGGCTGTGGAGTTATGAGGAGGACAGCCACTGCCTGCACATCCAGAGCCTGCTGCCGGGCCACACCCC
 CGCCAGGAGCAGGGCCAGGTCACTTTGTCTGTCCCCGGCTGCCCATCCTGGATGCAGATGAATACTTCC
 ATTGTGCGTTCGGGGACTATGACAGCTTGGCTCATGTGGAAGGGCCCCACGTGGCCTGTGTACCCCTCC
 CCAAGACCAGGTGCCACTTAACCCTCCAGGCACAGACCACGTCACTGTCCCCCTGGCCCTGATGTTCCGAG
 GACGTGACTGTGGCTGCCACCAACTTCTCTTTATGACTGCAGTGCCTCCAGGCCCTGGAGGGCGCTG
 CCCCGTGTGCGCTTGCCTGGGCAGCATCTGGCGGTGTCACTGGTGCCCGCAGAGTAGCCACTGCGTGTA
 CGGAGAGCACTGCCAGAGGGCGAGAGGACCATCTACAGCGCCAGGAGGTGGACATCCAGTGCCTGGC
 CCAGGGGCTTGGCCACAGGTGGAAGGCCTGGCAGGTCCCCACCTGGTGCCTGTGGCTGGGAGAGCCATT
 TGGCCCTACGCGTGCAGAACCTTCAACATTTCCGAGGCCTGCCTGCCTCCTTCCACTGCTGGCTGGAGCT
 GCCTGGAGAACTCGGGGACTGCCGGCCACCCTGGAGGAGACAGCAGGGGATTAGGCTCATCCACTGC
 CAGGCCACCAGTTTTATCCCTCATGTCCAGCGGGAGCTCCAGTGCCCATCTACGTACCCAGGGTG
 AAGCCCAGAGGCTGGACAACACCATGCTTTATGTGATCCTGTACGACTGCGCATGGGCCACCCGGA
 CTGCAGCCACTGCCAAGCGGCCAACAGGAGCCTGGGCTGCCTGTGGTGTGCTGACGGCCAGCCTGCCTGT
 CGCTATGGGCCCTTGTGCCCGCCGGGGGCTGTGGAGCTGCTGTGCTGCGCCAGCATTGATGCAGTCG
 AGCCCCGACCGGTCCCCTGAGGGAGGCTTGGCCCTCACCATCCTGGGCTCCAACCTGGGCCGGGCTT
 CGCCGATGTGCAGTACGCGGTGAGCGTGGCCAGCCGGCCCTGCAACCCTGAGCCCTCTCTACCCGACG
 TCGGCCCGGATTGTGTGTGACATCTCTGCCCCCAATGGCACCCTGGGCCGCTCCGGGTGGCCATTA
 AGAGCCAGCCACCAGGCATCTCAAGCCAGCACTTCACTACCAGGACCCTGTCTGCTGAGCCTGAGTCC
 TCGCTGGGGCCCCAGGCAGGGGGCACCAGCTCACCATCCGAGGTCAGCACCTCCAGACAGGTGGCAAC
 ACCAGTGCCTTCGTGGGTGGCCAAACCTGTCCCATCCTGGAGCCAGTGTGTCCGGAGGCCATCGTGTGCC
 GTACCAGGCCCCAGGCTGCCCCAGGAGAAGCAGCGGCTCTTGTGGTCTTTGGCCATGCCAGCCACACT
 GCTCGCCAGCCCCCTCCGCTACACCGCCAAACCCAGCTTGTAGCGGCGGAGCCAGTGCAGCTTCCGG
 GGGGTGGGCGACTGATCCGTGTGAGGGCACCAGGCTAGACGTGGTGCAGCGGCCCTACTGTCTGTGT
 GGCTGGAGGCTGACGCAGAGGTGACGGCTTCCAGGGCCAGCCCCAGGACCCACAGCCAAGGAGGAGCTG
 TGGAGCCCTGCTGCGGACCCCCAGGCTTGTATCCAGCTCGGTGGGGGGCTGCTGCAGTGTCCACCGTC
 TGCTCCGTCAACTCGTCCAGCCTCCTCCTGTGCCGGAGCCCTGCTGTACCAGACAGAGCCACCCGACG
 GGGTCTTCTTACCCTAGACAACGTGCAAGTGGACTTCGCCAGTGCCAGTGGGGGCCAGGGCTTCTGTGA
 CCAGCCAAACCCCGCTGGCACCCCTCAGCCGCGAGGGGCTGCCCGCCCTACCGCTCAAGCCAGGC
 CATGTCTGGATGTGGAGGGCGAGGGCTCAACCTGGGCATCAGCAAGGAGGAGGTGCGCGTGCACATCG
 GCCGCGCGAGTGCCTGGTGAAGACGCTCACGCGACCCACCTGTACTGCGAGCCGCTGCGCACGCCCC
 GCAGCCTGCCAATGGCTCCGGCCTGCCACAGTTCGTGGTGCAGATGGGCAATGTGCAGCTGGCCCTGGGC
 CCTGTGCAGTACGAGGCTGAACCCCGCTGTCTGCCTTTCCCGTGGAGGCCAGGCAGGCGTGGGCATGG
 GTGCTGCAGTGTGATTGCCCGCTGCTCCTCCTCACCCTCATGTACAGGCACAAGAGCAAGCAGGCCCT
 GCGGGACTACCAGAAGGTGCTAGTGCAGCTGGAGAGCCTGGAGACCGGCGTGGGAGACCAGTGCCGAAG
 GAGTTCACAGACCTCATGACGGAGATGACCGACCTCAGCAGCGACCTGGAGGGCAGCGGGATCCCCCTCC
 TGGACTACCGACCTACGCCGAGCGCCTTCTTCCCTGGCCATGGCGGTTGCCCGCTGCAGCCCCAAGCC
 TGAGGGGCCAGGGGAGGACGGCCACTGTGCCACTGTGCCAGGGCCTCACGCAGCTCTCAACCTGCTC
 AACAGCAAGCTTCTCCTCACGCTATCCACACCCTGGAGGAGCAGCCAGCTTTCCAGAGGGATC
 GCTGCCATGTGGCTTCGCTGCTGTGCTAGCGCTACACGGCAAGCTGGAGTACCTGACGGACATCATGAG
 GACCCTGCTGGGTGACCTGGCGGCCATTACGTGCACAGGAACCCCAAGCTCATGCTACGACAGGACAGAG
 ACCATGGTGGAGAACTGCTACCAACTGGCTGTCCATCTGCCTGTACGCCTTCTGAGGGAGGTGGCTG
 GTGAACCACTGTACATGCTTCCGGGCCATCCAGTACCAGGTGGACAAAGGCCCGTGGACGCCGTGAC
 AGGCAAGGCCAAACGGACCCTGAATGATAGCCGCTTGTGCGGGAGGACGTGGAGTTCAGCCCCGTGACG
 CTGATGGTGTGGTGGGGCCGGGGCTGGCGGGCCGAGGCAGCAGCGAGATGCAGCGCTGCCAGCCC
 GGGTGTGCTGCACACGGACACCATACCCAGGTCAAGGAGAAGGTGTTGGACCAAGTCTACAAGGGCACCCC
 TTCTCCCAGAGGCCCTCAGTGATGCCCTAGACCTTGTGAGTGGCGCTCAGGCCTGGCTGGTACCTGACC
 CTATCGGACGAAGACTTGACCTCCGTGACCCAAAACCACTGGAAGAGACTCAACACCTTGAACACTACA
 AGGTCCCAGATGGAGCAACAGTGGGGCTCGTCCCTCAGCTGCACCGTGGCAGCACCATCTCCCAGAGCCT
 GGCCAGAGGTGCCCTTGGGAGAGAACAACCCAGCTGGAGGATGGCGAGGAGGGGGGGTGTGCCTC
 TGGCACCTGGTGAAGCCACCGAGGAGCCAGAAGGGCCAAGGTGCGGTGCAGCAGCCTGCGGGAGCGCG

AGCCAGCAAGGGCCAAGGCCATTCCGGAAATCTACCTCACCCGTCTGCTGTCCATGAAGGGCACGCTGCA
 GAAGTTTGTGGACGACACCTTCCAGGCCATTCTCAGCGTGAACCGGCCATCCCCATCGCCGTCAAGTAC
 CTGTTTGACCTTCTGGATGAGCTAGCAGAGAAGCACGGCATCGAGGACCCAGGGACCTGCACATCTGGA
 AGACCAACAGTCTGCTGCTGCGGTTCTGGGTGAATGCCTGAAGAAGCCACAGCTCATCTTTGATGTACG
 GGTGTCGGACAATGTGGACGCCATCCTTGTGTATCGCCAGACCTTATTGACTCCTGTACCACCTCG
 GAGCATAAAGTGGGCCGGGATCCCCAGTGAACAACTGCTCTACGCCGGGAGATCCCACGCTACAAGC
 AGATGGTGGAGAGTACTATGCGGACATTCGCCAGAGCTCTCCGGCGAGCTACCAGGAGATGAACCTGTC
 TTTGGCTGAGCTCTCCGGAACTACACTTCTGCTCCCCACTGTCTGGAGGCTCTGCAAGAACTACAAC
 CACATCCACAGGTACTATGATCAGATTACAGTGCCTGGAGGAGACCTGTGGCCAGAACTGCAGC
 TGGCTGCCGCTGCAGCAGGTGCCGCCCTGGTGGAAAAAAAGTGACTGACCTG

AGCGGACCGACGCGTACGCGGCCGCTCGAGCAGAACTCATCTCAGAAGAGGATCTGGCAGCAAATGATATCC
 TGGATTACAAGGATGACGACGATAAGGTTTAA

Protein Sequence:

>RC228700 representing NM_001163257
 Red=Cloning site Green=Tags(s)

MELTPASSLTCSELLSPRLPGSFPQLRRVPPCSRPLPKAPVMARWPPFGLCLLLLLSPPLPLTGAHRF
 SAPNTLNLHALAPGRGTLVYGAVNRLFQLSPELQLEAVAVTGPVIDSPDCVPRDPAEQPQALTDNAN
 QLLLVSRAQELVACQVVRQVCETRRLDGVAEVLQYAEADPGDQGFVAANTPGVATVGLVPLPGRDLLL
 VARGLAGKLSAGVPLAIRQLAGSQPFSSEGLGRLVVGDFSDYNNSYVGFADARSAYVFRRRRARAQA
 EYRSYVARVCLGDTNLYSYVEVPLACQGGQLIQAFLAPGTLGVFAAGPRGTQAALCAFPVVELGASME
 QARRLCYTAGGRPGSGAEAEATVEYGVTSRCVTPLDPSYPCGDEHTPSPIAGRQPLEVQPLKLGQPV
 SAVAALQADGHMIAFLGDTQGGLYKVFVHGSQGGVYHSQQVGGPQSAISPDLLLDSGSHLYVLTAHQVD
 RIPVAACPQFPDCAASCLQAQDPLCGWCVLQGRCTRKGQCGRAGLNLQWLWSYEEDSHCLHIQSLPGHHP
 RQEQGQVTLVSPRLPILDADEYFHCAFQDYDSLAVHVEGPHVACVTPPQDQVPLNPPGTDHVTPLALMFE
 DVTVAATNFSFYDCSAVQALEAAAPCRACVGSIRCHWCPQSSHCVYGEHCEGERTIYSAQEVDIQVRG
 PGACQVEGLAGPHLVPVWESHLLRVRNLQHFRGLPASFHWCLELPGELRGLPATLEETAGDSGLIHC
 QAHQFYPSMSQRELVPVIYVTQGEAQRDLNTHALYVILYDCAMGHPDCSHCQAANRSLGCLWCADGQPAC
 RYGPLCPPGAVELLCPAPSIDAVEPLTGPPEGLALITLGSNLGRAADVQYAVSVASRPCNPEPSLYRT
 SARIVCVTSPAPNGTTGPVRVAIKSQPPGISSQHFTYQDPVLLSLSPRWGPQAGGTQLTIRGQHLQTGGN
 TSAFVGGQPPILEPVCPEAIVCRTRPQAAPGEAAVLVVFHGAQRLLASPFRTYANPQLVAAEPSASFR
 GGGRLIRVRGTGLDVVQRPLLSVWLEADAQASRAQPDPQPRRSCGAPAADPQACIQGGLLQCSTV
 CSVNSSLLLLCRSPAVPDRAHPQRVFFTLDNVQVDFASASGGQGFYQPNRLAPLSREGPARPYRLKPG
 HVL DVEGEGLNLGISKEEVRVHIGRGECLVKTLTRTHLYCEPPAHAPQPANGSGLPQFVVMGNVQLALG
 PVQYEAEPPLSAFPVEAQAGVGMGAAVLIAAVLLLTLMYRHKSKQALRDYQKVLVQLESLETGVGDQCRK
 EFTDLMTMTDLSSDLEGSIPFLDYRTYAERAFPPGHGGCPLQPKPEGGEDGHCATVRQGLTQLSNLL
 NSKLFLLTLIHTLEEQPSFSQRDRCHVASLLSLALHGKLEYLTDIMRTLLGDAAHYVHRNPKMLLRTE
 TMVEKLLTNWLSICLYAFLREVAGEPLYMLFRAIQYQVDKGPVDAVTGKAKRTLNDLRLLREDVEFQPLT
 LMLVVGPGAGGAAGSSEMQRVPARVLDTDITQVKEKVLQVYKGTQPFQSRPSVHALDLEWRSLAGHLT
 L SDEDLTSVTQNHWRKRLNTLQHYKVPDGVTVGLVPQLHRGSTISQSLAQRCPLENIPTLEDGEEGVCL
 WHLVKATEEPEGAKVRCSSLREREPARAKAIPYIYLTRLLSMKGTQKQFVDDTFQAILSVNRPIPIAVKY
 LFDLLDELAEKHGIEDPGTLHIWKTNSLLRFVWNAKKNPQLIFDVRVSDNVDAI LAVIAQTFIDSCSTS
 EHKVGRDSPVNKLLYAREIPRYKQMVYRYADIRQSSPASYQEMNSALAE LSGNYTSAPHCLEALQELYN
 HIHRYDQIISALEEDPVGQKLQACRLQQAALVENKVTDL

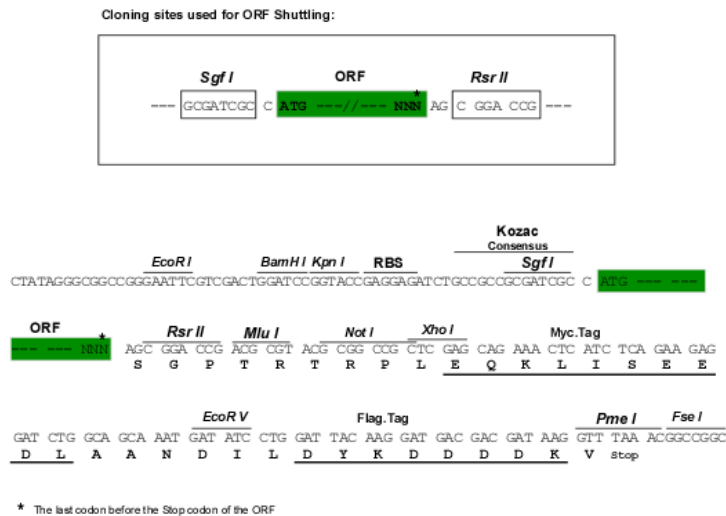
SGPTRRRRLEQKLI SEEDLAANDILDYKDDDDKV

Chromatograms:

https://cdn.origene.com/chromatograms/mk8035_g03.zip

Restriction Sites:

Sgfl-RsrII

Cloning Scheme:


ACCN: NM_001163257

ORF Size: 5796 bp

OTI Disclaimer: The molecular sequence of this clone aligns with the gene accession number as a point of reference only. However, individual transcript sequences of the same gene can differ through naturally occurring variations (e.g. polymorphisms), each with its own valid existence. This clone is substantially in agreement with the reference, but a complete review of all prevailing variants is recommended prior to use. [More info](#)

OTI Annotation: This clone was engineered to express the complete ORF with an expression tag. Expression varies depending on the nature of the gene.

Components: The ORF clone is ion-exchange column purified and shipped in a 2D barcoded Matrix tube containing 10ug of transfection-ready, dried plasmid DNA (reconstitute with 100 ul of water).

- Reconstitution Method:**
1. Centrifuge at 5,000xg for 5min.
 2. Carefully open the tube and add 100ul of sterile water to dissolve the DNA.
 3. Close the tube and incubate for 10 minutes at room temperature.
 4. Briefly vortex the tube and then do a quick spin (less than 5000xg) to concentrate the liquid at the bottom.
 5. Store the suspended plasmid at -20°C. The DNA is stable for at least one year from date of shipping when stored at -20°C.

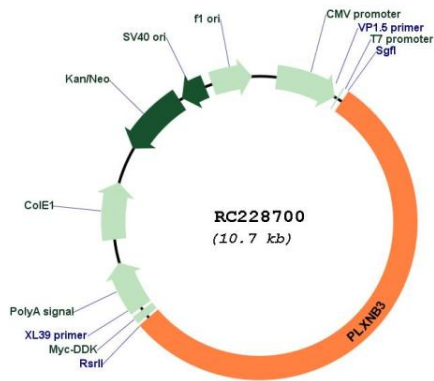
RefSeq: [NM_001163257.1](#), [NP_001156729.1](#)

RefSeq ORF: 5799 bp

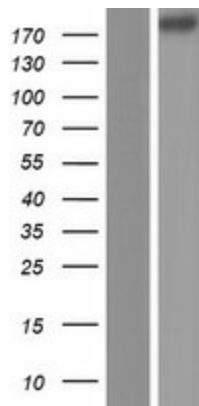
Locus ID: 5365

UniProt ID: [Q9ULL4](#)
Cytogenetics: Xq28
Protein Families: Druggable Genome
Protein Pathways: Axon guidance
MW: 209.1 kDa
Gene Summary: The protein encoded by this gene is a member of the plexin family. It functions as a receptor for semaphorin 5A, and plays a role in axon guidance, invasive growth and cell migration. Alternatively spliced transcript variants encoding different isoforms have been found for this gene. [provided by RefSeq, Sep 2009]

Product images:



Circular map for RC228700



Western blot validation of overexpression lysate (Cat# [LY431728]) using anti-DDK antibody (Cat# [TA50011-100]). Left: Cell lysates from untransfected HEK293T cells; Right: Cell lysates from HEK293T cells transfected with RC228700 using transfection reagent MegaTran 2.0 (Cat# [TT210002]).