

Product datasheet for **RC228681**

CD109 (NM_001159587) Human Tagged ORF Clone

Product data:

Product Type: Expression Plasmids
Product Name: CD109 (NM_001159587) Human Tagged ORF Clone
Tag: Myc-DDK
Symbol: CD109
Synonyms: CPAMD7; p180; r150
Mammalian Cell Selection: Neomycin
Vector: pCMV6-Entry (PS100001)
E. coli Selection: Kanamycin (25 ug/mL)
ORF Nucleotide Sequence: >RC228681 representing NM_001159587
 Red=Cloning site Blue=ORF Green=Tags(s)

TTTTGTAATACGACTCACTATAGGGCGGCCGGAATTCGTCGACTGGATCCGGTACCGAGGAGATCTGCC
 GCC**CGATCGCC**

ATGCGAGGGCCACCGCTCCTGACCGCCGCCACCTCCTCTGCGTGTGCACCGCCGCGCTGGCCGTGGCTC
 CCGGGCCTCGGTTTCTGGTGACAGCCCCAGGGATCATCAGGCCCGGAGGAAATGTGACTATTGGGGTGG
 GCTTCTGGAACACTGCCCTTACAGGTGACTGTGAAGCGGAGCTGCTCAAGACAGCATCAAACCTCACT
 GTCTCTGTCTGGAAGCAGAAGGAGTCTTTGAAAAAGGCTCTTTAAGACACTTACTCTCCATCACTAC
 CTCTGAACAGTGCAGATGAGATTTATGAGCTACGTGTAACCGGACGTACCCAGGATGAGATTTTATTCTC
 TAATAGTACCCGCTTATCATTGAGACCAAGAGAATATCTGTCTTATTCAAACAGACAAGGCCCTTATAC
 AAGCCAAAGCAAGAAGTGAAGTTTCGCATTGTTACACTCTTCTCAGATTTAAGCCTTACAAAACCTCTT
 TAAACATTCTCATTAAAGGACCCCAAATCAAATTTGATCCAACAGTGGTTGTCAACAAGTGAATGTTGG
 AGTCATTTCCAAAACCTTTTCAAGCTATCTCCCATCCAATACTTGGTGACTGGTCTATTCAAGTTCAGTG
 AATGACCAGACATATTATCAATCATTTCAGTTCAGAAATGTATTACCAAAATTTGAAGTGAATTTGC
 AGACACCATTATATTGTTCTATGAATCTAAGCATTTAAATGGTACCATCACGGCAAAGTATACATATGG
 GAAGCCAGTGAAGGAGACGTAACGCTTACATTTTACCTTTATCCTTTTGGGGAAGAAGAAAAATATT
 AAAAAACATTTAAGATAAATGGATCTGCAAACCTCTCTTTAATGATGAAGAGATGAAAAATGTAATGG
 ATCTTTCAAATGGACTTTCTGAATACCTGGATCTATCTTCCCCTGGACCAGTAGAAATTTAACCACAGT
 GACAGAATCAGTTACAGGTATTTCAAGAAATGTAAAGCACTAATGTGTTCTTCAAGCAACATGATTACATC
 ATTGAGTTTTTTGATTATACTACTGTCTTGAAGCCATCTCTCAACTTCACAGCCACTGTGAAGGTAACTC
 GTGCTGATGGCAACCAACTGACTCTTGAAGAAAGAAGAAATAATGTAGTCATAACAGTGACACAGAGAAA
 CTATACTGAGTACTGGAGCGGATCTAACAGTGGAAATCAGAAAATGGAAGCTGTTTCAGAAAATAAATTA
 ACTGTCCCCCAAAGTGGAACTTTAAGATTGAATTCCTCAATCCTGGAGGATTCAGTGAGCTACAGTTGA
 AGGCCTATTTCTTGGTAGTAAAAGTAGCATGGCAGTTTCATAGTCTGTTAAGTCTCCTAGTAAGACATA
 CATCCAACAAAAACAAGAGATGAAAATATAAAGTGGGATCGCCTTTTGAGTTGGTGGTAGTGGAAC

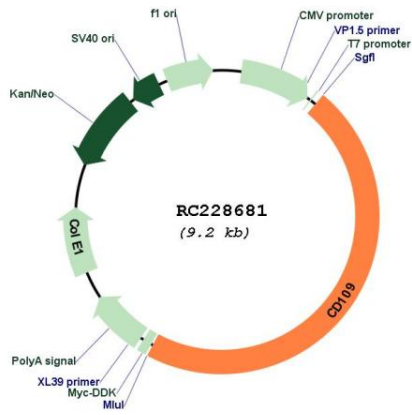


AAACGATTGAAGGAGTTAAGCTATATGGTAGTATCCAGGGGACAGTTGGTGGCTGTAGGAAAAAAAATT
CAACAATGTTCTCTTTAACACCAGAAAATTCTTGGACTCCAAAAGCCTGTGTAATTGTGATTATATTGA
AGATGATGGGGAAATTATAAGTGATGTTCTAAAAATTCCTGTTACAGCTTGTTTTTAAAAATAAGATAAG
CTATATTGGAGTAAAGTGAAAGCTGAACCATCTGAGAAAGTCTCTCTTAGGATCTCTGTGACACAGCCTG
ACTCCATAGTTGGGATTGTAGCTGTTGACAAAAGTGTGAATCTGATGAATGCCTTAATGATATTACAAT
GGAAAAATGTGGTCCATGAGTTGGAACCTTATAACACAGGATATTATTTAGGCATGTTTCATGAATTCCTTT
GCGATCTTTCAGGAATGTGGACTCTGGGTATTGACAGATGCAAACCTCACGAAGGATTATATTGATGGTG
TTTATGACAATGCAGAATATGCTGAGAGGTTTATGGAGGAAAATGAAGGACATATTGTAGATATTTCATGA
CTTTTCTTTGGGTAGCAGTCCACATGTCCGAAAAGCATTTCAGAGACTTGGATTGGCTAGACACCAAC
ATGGGTTACAGGATTTACCAAGAATTTGAAGTAACTGTACCTGATTCTATCACTTCTTGGGTGGCTACTG
GTTTTGTGATCTCTGAGGACCTGGGTCTTGGACTAACAACTACTCCAGTGGAGCTCCAAGCCTTCCAACC
ATTTTTCATTTTTTTGAATCTTCCCTACTCTGTTATCAGAGGTGAAGAATTTGCTTTGGAATAACTATA
TTCAATATTGAAAGATGCCACTGAGGTTAAGGTAATCATTGAGAAAAGTGACAAATTTGATATTCTAA
TGACTTCAATGAAATAAATGCCACAGGCCACCAGCAGACCCTTCTGGTCCCAGTGAGGATGGGGCAAC
TGTTCTTTTTCCATCAGGCCAACACATCTGGGAGAAAATTCCTATCACAGTCACAGCTCTTCCACCCACT
GCTTCTGATGCTGTCACCCAGATGATTTAGTAAAGGCTGAAGGAATAGAAAAATCATATTCACAATCCA
TCTTATTAGACTTGACTGACAATAGGCTACAGAGTACCCTGAAAACCTTTGAGTTTCTCATTTCTCTCTAA
TACAGTGAAGTGGCAGTGAAGAGTTGAGTCACTGCAATTTGGAGATGTTCTTGGTCCCTTCCATCAATGGC
TTAGCCTCATTGATTCGGATGCCTTATGGCTGTGGTGAACAGAACATGATAAATTTGCTCCAAATATTT
ACATTTTGATTATCTGACTAAAAAGAAACAACCTGACAGATAATTTGAAAGAAAAAGCTCTTTCATTTAT
GAGGCAAGGTTACCAGAGAGAACCTCTCTATCAGAGGGAAGATGGCTCTTTCAGTGCTTTTGGGAATTA
GACCTTCTGGGAGCCTTGGTGTGAGCTTTTGTGTTTAAAGATGTTTCTTGAAGCCGATCCTTACATAG
ATATTGATCAGAATGTGTTACACAGAACATACACTTGGCTTAAAGGACATCAGAAATCCAACGGTGAAT
TTGGGATCCAGGAAGAGTGATTCATAGTGAGCTTCAAGGTGGCAATAAAAGTCCAGTAACTTACAGCC
TATATTGTAACCTCTCTCTGGGATATAGAAAATCAGCCTAACATTGATGTGCAAGAGTCTATCCATT
TTTTGGAGTCTGAATTCAGTAGAGGAATTTAGACAATTAATCTAGCCCTTAACTTATGCATTGTC
ATCAGTGGGAGTCTAAAGCGAAGGAAGCTTTGAATATGCTGACTTGGAGAGCAGAACAAGAAGGTGGC
ATGCAATCTGGGTGTCATCAGAGTCCAACTTTCTGACTCCTGGCAGCCACGCTCCCTGGATATTGAAG
TTGCAGCCTATGCACTGCTCTCACACTTCTACAATTTACAGACTCTGAGGGAATCCCAATTATGAGGTG
GCTAAGCAGGCAAGAAATAGCTTGGTGGTTTTGCATCTACTCAGGATACCACTGTGGCTTTAAAGGCT
CTGTCTGAATTTGCAGCCCTAATGAATACAGAAAGGACAATATCCAAGTGACCGTGACGGGGCCTAGCT
CACCAAGTCTCTTGCTGTGGTACAGCCAACGGCAGTTAATATTTCCGCAATGTTTTGGATTTGCTAT
TTGTCAGCTCAATGTTGTATATAATGTGAAGGCTTCTGGGTCTTCTAGAAGACGAAGATCTATCCAAAT
CAAGAAGCCTTTGATTTAGATGTTGCTGTAAAAGAAAATAAAGATGATCTCAATCATGTGGATTTGAATG
TGTGTACAAGCTTTTCGGGCCGGGTAGGAGTGGCATGGCTCTTATGGAAGTTAACCTATTAAGTGGCTT
TATGGTGCCTTCAGAAGCAATTTCTCTGAGCGAGACAGTGAAGAAAAGTGGAAATATGATCATGAAAACTC
AACCTCTATTTAGATTCTGTAATGAAACCCAGTTTTGTGTTAATATTCTGCTGTGAGAAACTTTAAAG
TTACAACCTCTGAAGTGAAGCTGTCTCTGTGACCTTTGCAGTGATGTCCAGGGCTGCCGCTTGTGAG
GATGGAGCTTCAGGCTCCCATCATCACTCTTCAAGTCAATTTTTATTTCTGTTTCAAGCTTCTGTACTTTA
TGAACCTTTGGCTG

ACGCGTACGCGGCCGCTCGAGCAGAACTCATCTCAGAAGAGGATCTGGCAGCAATGATATCCTGGATT
ACAAGGATGACGACGATAAGGTTTAA

OTI Disclaimer:	The molecular sequence of this clone aligns with the gene accession number as a point of reference only. However, individual transcript sequences of the same gene can differ through naturally occurring variations (e.g. polymorphisms), each with its own valid existence. This clone is substantially in agreement with the reference, but a complete review of all prevailing variants is recommended prior to use. More info
OTI Annotation:	This clone was engineered to express the complete ORF with an expression tag. Expression varies depending on the nature of the gene.
Components:	The ORF clone is ion-exchange column purified and shipped in a 2D barcoded Matrix tube containing 10ug of transfection-ready, dried plasmid DNA (reconstitute with 100 ul of water).
Reconstitution Method:	<ol style="list-style-type: none">1. Centrifuge at 5,000xg for 5min.2. Carefully open the tube and add 100ul of sterile water to dissolve the DNA.3. Close the tube and incubate for 10 minutes at room temperature.4. Briefly vortex the tube and then do a quick spin (less than 5000xg) to concentrate the liquid at the bottom.5. Store the suspended plasmid at -20°C. The DNA is stable for at least one year from date of shipping when stored at -20°C.
RefSeq:	NM_001159587.2 , NP_001153059.1
RefSeq ORF:	4287 bp
Locus ID:	135228
UniProt ID:	Q6YHK3
Cytogenetics:	6q13
MW:	159.7 kDa
Gene Summary:	This gene encodes a glycosyl phosphatidylinositol (GPI)-linked glycoprotein that localizes to the surface of platelets, activated T-cells, and endothelial cells. The protein binds to and negatively regulates signalling by transforming growth factor beta (TGF-beta). Multiple transcript variants encoding different isoforms have been found for this gene. [provided by RefSeq, Apr 2014]

Product images:



Circular map for RC228681