

Product datasheet for **RC228655**

Fibulin 2 (FBLN2) (NM_001165035) Human Tagged ORF Clone

Product data:

Product Type:	Expression Plasmids
Product Name:	Fibulin 2 (FBLN2) (NM_001165035) Human Tagged ORF Clone
Tag:	Myc-DDK
Symbol:	Fibulin 2
Mammalian Cell Selection:	Neomycin
Vector:	pCMV6-Entry (PS100001)
E. coli Selection:	Kanamycin (25 ug/mL)
ORF Nucleotide Sequence:	>RC228655 representing NM_001165035 Red=Cloning site Blue=ORF Green=Tags(s)

TTTTGTAATACGACTCACTATAGGGCGGCCGGAATTCGTCGACTGGATCCGGTACCGAGGAGATCTGCC
GCC**CGATCGCC**

ATGGTGCTGCTCTGGGAGCCTGCAGGAGCCTGGCTTGCTCTGGGCCTGGCCCTGGCCCTGGGCCCCAGCG
TGGCCGCAGCTGCCCTCGGCAGGACTGCACGGCGTGGAGTGCCCGCCGCTGGAGAAGTGCATTGAGGA
GGCGCTGGAGCCGGGTGCCTGCTGTGCCACGTGTGTGCAGCAGGGCTGCGCCTGCGAGGGCTACCACTAC
TATGACTGCCTACAGGGTGGCTTCGTGCGCGCCGCGTGCCTGCGCAGTCCATATTTGTGGACTTCG
GGAGCACTGAGTCTCTGCCACCAGGGCGGCAAGATCAGTGCAGTTCATGCTGTGCCCGGAGCT
GCCGCCAACTGCATCGAGGCTGTAGTGGTGGCTGACAGCTGCCACAGTGCAGGAGGAGTGGGCTGCGTC
CACGCGGGCCACAAGTACGCCGCTGGCCACACTGTTACCTGCCGCCCTGCCGGGCTGCCACTGCCCTG
ACGCCGTGGAGAGCTCATCTGCTACCAGCTCCCCGTTGCCACGGAACTTCTCAGATGCCAGGAGGG
TGACCCCGAGCGACTACGAAGACCCCTACAGCTATGACCAGGAGGTGGCCGAGGTGGAAGCAGCAACA
GCCCTGGGGGTGAGGTCCAGGCGGGTGCAGTCCAGGCAGGCGCAGGGGGCCCCCAGCTGCTCTGGGAG
GTGGGAGTCAGCCACTGTCCACCATCCAGGCACCCCTGGCCAGCTGTCCTCCCAGGCCACAGCGGC
TGCTGCCCTGGTCCCCAGCCCAGTGCAGGCCAAAGCTAGGAGAGTACCAGGACAGTGAAGAGGAA
GAAGAGGAGGAGGAGAGAGAGAGAAATGGCTGTCACTGAGCAGCTGGCAGCAGGTGGCCACAGGGGGC
TGGATGGGCTGCCACTACAGCCCCAGCTGGACCCAGTCTTCTATCCAGGAGGAGAGGGCAGAAGCTGG
GGCAAGGGCAGAAGCTGGGGCAAGGCCTGAAGAGAACCTCATCTGGATGCCAAGCCACGTCCCCGAGC
ACTGGGCCGAGGGCGTGACGCATGACCCGAGCCTGGGCAAGGCTGCTCTCGTCCCAACTCAGGCCGTGC
CTGGCTCTCCCAGGGACCCAGTCAAGCCCAGCCCCACAACATCTGTCCACATCACTGCCTGATGCAGC
CTGGATCCCACCCACCCGAGAAGTGCCAGGAAGCCGCAAGTTCTGCCCATTCACAGTGGAGGAGGAC
ACAGACCCCAACTCTGTCCATTCTATCCCAGAAGTAGCCCTGAAGGCTCCACCAAGGACCTGATCGAGA
CTTGCTGCGCAGCCGGACAGCAGTGGGCCATTGACAATGACGAGTGCCTGGAGATCCCTGAGAGTGGCAC
TGAGGACAACGTCTGCAGGACAGCCAGAGGCACTGCTGTGTCTCTACTTGCAGGAGAAGAGTGCATG
GCCGGCTCCTGGGAGCCAAGGAGGTGAGACCTGTGGGCTGAGGACAACGACAGCTGCCGCATCTCCC
TGTACAAGCAATGCTGTGACTGCTGTGGCTGGGCTCCGCTGCGGGCCGAGGGCCAGTCTGTGAGTC



[View online »](#)

CAATCCTAACCTGGGCTATCCCTGCAATCATGTATGCTCTCCTGCTGTGAGGGTGAAGAGCCTCTCATA
GTACCTGAGGTTTCGCCGACCTCCAGAGCCCGCAGCTGCACCACGGAGAGTTTCAGAGGCAGAGATGGCGG
GCCGAGAGGCCCTGTCACTGGGCACAGAGGCCGAGCTGCCGAACAGCCTGCCGGGCGATGACCAGGATGA
GTGCTTCTCCTCCCGGAGAGCTGTGCCAGCACCTTTGCATCAATACTGTGGGTTCTTACCAGTGTGCC
TGCTTTCTGGCTTCTACTGCAGGACGATGGCCGCACTTGCCGCCAGAGGGTCAACCTCCACAGCCGG
AAGCCCCACAGGAGCCTGCACTGAAGTCAGAATTTCCAGGTGGCCTTAACACCATCCCGCTGCCACT
GCCGCAGCCCAATACCTGCAAAGACAATGGACCCTGCAAGCAGGTGTGCAGCACTGTTGGGGGCTCAGCC
ATATGCTCCTGTTTTCCCGGCTATGCCATCATGGCGGATGGCGTGTCTGTGAAGACCAAGACGAGTGCC
TGATGGGTGCTCACGATTGTAGCCGGCGACAGTTCTGTGTGAACACCCTGGGATCCTTCTACTGTGTCAA
CCACACAGTGTCTGTGCCGATGGCTATATCCTCAATGCGCACAGGAAGTGCCTGGACATCAACGAGTGT
GTGACGGACCTGCACACGTGCAGCCGGGGCGAGCACTGTGTGAACACACTGGGCTCCTTCCACTGCTACA
AGGCACTCACCTGTGAGCCAGGCTATGCCCTCAAGGATGGCGAGTGCAGAACAGTGGATGAGTGTGCGAT
GGGCACGCACACCTGCCAGCCGGGCTTCTGTGCCAGAACACCAAGGGCTCCTTCTACTGCCAGGCCAGG
CAGCGCTGCATGGATGGCTTCTGCAGGATCCTGAAGGCAACTGTGTGGACATCAACGAGTGCACGTAC
TGTCCGAGCCATGTCGGCCAGGCTTCCAGCTGCATCAACACGGTGGGCTCCTACACATGCCAGAGGAACCC
GCTGATCTGCGCCGCGGCTACACGCCAGCGATGATGGGACCAAGTGTGTGGACGTGAATGAGTGTGAG
ACAGGTGTGCACCCTGCGGTGAGGGCCAAGTGTGCCACAACCTCCCTGGCTCCTACCGCTGTGACTGCA
AAGCCGGCTTTCAGCGGGATGCCTTTGGCCGGGCTGCATCGACGTGAATGAGTGTGGGCTCGCCAGG
CCGCTGTGCCAGCACACGTGTGAGAACACACTCGGCTCCTACCGCTGTTCTGCGCCTCCGGGTTCTGT
CTAGCAGCGGACGGCAAGCGCTGTGAAGACGTGAATGAGTGTGAGGCCAGCGCTGCAGCCAGGAGTGTG
CCAACATCTATGGCTCCTACAGTGTACTGCCGCCAGGGCTACCAGTGGCTGAGGATGGGCACACCTG
CACAGACATCGACGAGTGTGCTCAAGGCCCGGCATCCTCTGCACCTCCGCTGTCTCAACGTGCCAGGG
AGCTACCAGTGTGCATGCCCTGAGCAGGGCTACACCATGACGGCCAACGGGAGTCTGCAAGGACGTGG
ATGAGTGTGCACTGGGTACCCACAACCTGTTCCGAGGCTGAGACCTGCCACAACATCCAGGGTAGCTTCCG
CTGCTGCGCTTCGAGTGTCTCCCAACTATGTCCAAGTCTCAAAACGAAGTGCAGGCGCACACAGTGC
CATGACTTCTGGAGTGCCAGAACTCGCCAGCGCATCACGCACTACCAGTCAACTTCCAGACGGGCC
TCCTGGTGCCTGCGCATACTTCCGCATTGGCCCCGCGCCAGCCTTACGGGGGACACCATCGCCCTGAA
CATCATCAAGGGCAATGAGGAGGGCTACTTTGGCACGCGCAGGCTCAATGCCTACACGGGTGTGGTCTAC
CTGCAGCGGGCCGTGCTGGAGCCCCGGGACTTTGCCCTGGACGTGGAGATGAAGCTCTGGAGGCAGGGCT
CCGTACCACCTCCTGGCCAAGATGCACATCTTCTTACCACCTTTGCCCTG

ACGCGTACGCGGCCGCTCGAGCAGAACTCATCTCAGAAGAGGATCTGGCAGCAAATGATATCCTGGATT
ACAAGGATGACGACGATAAGGTTTAA

Protein Sequence: >RC228655 representing NM_001165035
 Red=Cloning site Green=Tags(s)

```

MVLLEWEPAGAWLALGLALALGPSVAAAAPRQDCTGVCEPPLENCIEEALEPGACCATCVQQGACEGYQY
YDCLQGGFVGRVPAQSYFVDFGSTECSCPPGGGKISCQFMLCPELPPNCIEAVVVADSCPCGQVGCV
HAGHKYAAAGHTVHLPPCRACHCPDAGGELICYQLPGCHGNFSDAEEGDPERHYEDPYSYDQVEAVEAAT
ALGGEVQAGAVQAGAGGPPAALGGGSQLSTIQAPPWPAVLPRTAAAALGPPAPVQAKARRVTEDESEEE
EEEEEREEMAVTEQLAAGGHRGLDGLPTTAPAGPSLPIQEERAEGARAEAGARPEENILDAQATSRS
TGPEGVTHAPSLGKAALVPTQAVPGSPRDPVKPSPHNILSTSLPDAAWIPPTREVPRKPQVLPKSHVEED
TDPNSVHSIPRSSPEGSTKDLIETCCAAGQQAIDNDECLIPESGTEDNVCRTAQRHCCVSYLQEKSCM
AGVLGAKEGETCGAEDNDSCGISLYKQCCDCCGLGLRVRAEQSCSESNPNLGYPCNHVMLSCCEGEEPLI
VPEVRRPPEAAAAPRVSEAEMAGREALSLGTEAELPNSLPGDDQDECLLLPGELCQHLCINTVGSYHCA
CFPGFSLQDDGRTCRPEGHPPQPEAPQEPALKSEFSQVASNTIPLPLQPNTCKDNGPCKQVCSTVGGSA
ICSCFPGYAIMADGVSCEDQDECLMGAHDCSRRQFCVNTLGSFYCVNHTVLCADGYILNAHRKCVDINEC
VTDLHTCSRGEHCVNTLGSFHCKYKALTCFPGYALKDGECEVDVDECAMGTHTCQPGFLCQNTKGSFYCQAR
QRCMDGFLQDPEGNCDVINECTSLSEPCRPFGSCINTVGSYTCQRNPLICARGYHASDDGKCVDVNECE
TGVHRCGEGQVCHNLPGSYRCDCKAGFQRDAFGRGCIDVNECWASPGRLCQHTCENTLGSYRCSASCGL
LAADGKRCEDVNECEAQRCSQECANIYGSYQCYCRQGYQLAEDGHTCTDIDECAQGAGILCTFRCLNVP
SYQCACPEQGYMTANGRSCKDVDECALGTHNCSEAETCHNIQGSFRCLRFECPPNYVQVSKTKCERTTC
HDFLEQCNSPARITHYQLNFQTGLLVPAHIFRIGPAPAF TGDTIALNI IKNEEGYFGTRRLNAYTGVVY
LQRAVLEPRDFALDVEMKLWRQGSVTTFLAKMHIFFTTFAL
  
```

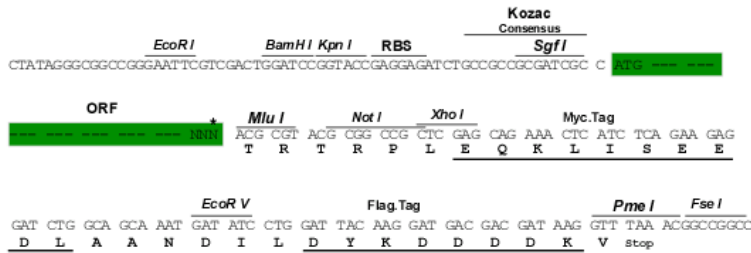
TRTRPLEQKLI SEEDLAANDILDYKDDDDKV

Chromatograms: https://cdn.origene.com/chromatograms/mk8007_b02.zip

Restriction Sites: SgfI-MluI

Cloning Scheme:

Cloning sites used for ORF Shuttling:



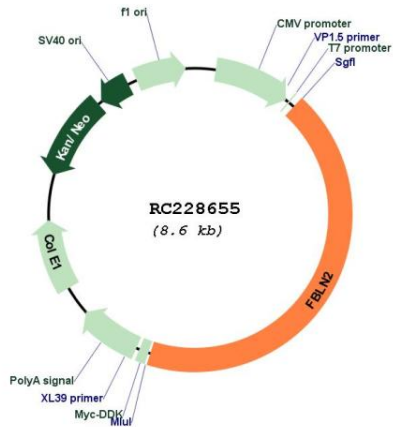
* The last codon before the Stop codon of the ORF

ACCN: NM_001165035

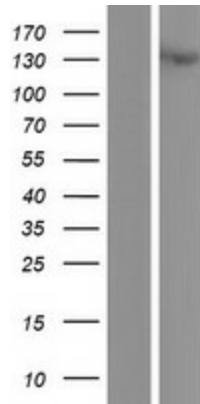
ORF Size: 3693 bp

OTI Disclaimer:	The molecular sequence of this clone aligns with the gene accession number as a point of reference only. However, individual transcript sequences of the same gene can differ through naturally occurring variations (e.g. polymorphisms), each with its own valid existence. This clone is substantially in agreement with the reference, but a complete review of all prevailing variants is recommended prior to use. More info
OTI Annotation:	This clone was engineered to express the complete ORF with an expression tag. Expression varies depending on the nature of the gene.
Components:	The ORF clone is ion-exchange column purified and shipped in a 2D barcoded Matrix tube containing 10ug of transfection-ready, dried plasmid DNA (reconstitute with 100 ul of water).
Reconstitution Method:	<ol style="list-style-type: none">1. Centrifuge at 5,000xg for 5min.2. Carefully open the tube and add 100ul of sterile water to dissolve the DNA.3. Close the tube and incubate for 10 minutes at room temperature.4. Briefly vortex the tube and then do a quick spin (less than 5000xg) to concentrate the liquid at the bottom.5. Store the suspended plasmid at -20°C. The DNA is stable for at least one year from date of shipping when stored at -20°C.
RefSeq:	NM_001165035.2
RefSeq ORF:	3696 bp
Locus ID:	2199
UniProt ID:	P98095
Cytogenetics:	3p25.1
Protein Families:	Secreted Protein
MW:	131.86 kDa
Gene Summary:	This gene encodes an extracellular matrix protein, which belongs to the fibulin family. This protein binds various extracellular ligands and calcium. It may play a role during organ development, in particular, during the differentiation of heart, skeletal and neuronal structures. Alternatively spliced transcript variants encoding different isoforms have been identified. [provided by RefSeq, Jul 2008]

Product images:



Circular map for RC228655



Western blot validation of overexpression lysate (Cat# [LY431683]) using anti-DDK antibody (Cat# [TA50011-100]). Left: Cell lysates from untransfected HEK293T cells; Right: Cell lysates from HEK293T cells transfected with RC228655 using transfection reagent MegaTran 2.0 (Cat# [TT210002]).