

Product datasheet for **RC228616L4V**

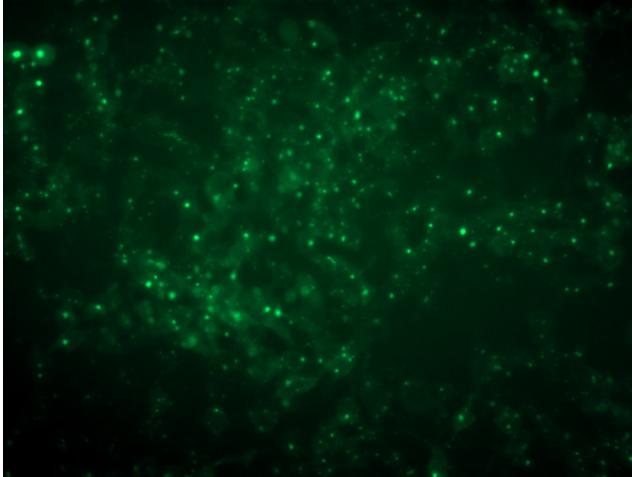
Synaptopodin (SYNPO) (NM_001166208) Human Tagged ORF Clone Lentiviral Particle

Product data:

Product Type:	Lentiviral Particles
Product Name:	Synaptopodin (SYNPO) (NM_001166208) Human Tagged ORF Clone Lentiviral Particle
Symbol:	Synaptopodin
Mammalian Cell Selection:	Puromycin
Vector:	pLenti-C-mGFP-P2A-Puro (PS100093)
Tag:	mGFP
ACCN:	NM_001166208
ORF Size:	2787 bp
ORF Nucleotide Sequence:	The ORF insert of this clone is exactly the same as(RC228616).
OTI Disclaimer:	The molecular sequence of this clone aligns with the gene accession number as a point of reference only. However, individual transcript sequences of the same gene can differ through naturally occurring variations (e.g. polymorphisms), each with its own valid existence. This clone is substantially in agreement with the reference, but a complete review of all prevailing variants is recommended prior to use. More info
OTI Annotation:	This clone was engineered to express the complete ORF with an expression tag. Expression varies depending on the nature of the gene.
RefSeq:	NM_001166208.1
RefSeq ORF:	2790 bp
Locus ID:	11346
UniProt ID:	Q8N3V7
Cytogenetics:	5q33.1
MW:	99.3 kDa
Gene Summary:	Synaptopodin is an actin-associated protein that may play a role in actin-based cell shape and motility. The name synaptopodin derives from the protein's associations with postsynaptic densities and dendritic spines and with renal podocytes (Mundel et al., 1997 [PubMed 9314539]).[supplied by OMIM, Mar 2008]



[View online »](#)

Product images:

[RC228616L4] was used to prepare Lentiviral particles using [TR30037] packaging kit. HEK293T cells were transduced with RC228616L4V particle to overexpress human SYNPO-mGFP fusion protein.