

Product datasheet for **RC228610**

HSPC302 (TBCK) (NM_001163435) Human Tagged ORF Clone

Product data:

Product Type:	Expression Plasmids
Product Name:	HSPC302 (TBCK) (NM_001163435) Human Tagged ORF Clone
Tag:	Myc-DDK
Symbol:	HSPC302
Synonyms:	HSPC302; IHPRF3; TBCKL
Mammalian Cell Selection:	Neomycin
Vector:	pCMV6-Entry (PS100001)
E. coli Selection:	Kanamycin (25 ug/mL)



[View online »](#)

ORF Nucleotide Sequence:

>RC228610 representing NM_001163435
 Red=Cloning site Blue=ORF Green=Tags(s)

TTTTGTAATACGACTCACTATAGGGCGGCCGGGAATTCGTCGACTGGATCCGGTACCGAGGAGATCTGCC
 GCC**GCGATCGCC**

ATGTTTCCCTGAAGGACGCTGAAATGGGAGCCTTACCTTCTTTGCCTCGGCTCTGCCACATGATGTTT
 GTGGAAGCAATGGACTTCTCTCACACCAAATTCATCAAAATTTAGGGCGCTTTCAAATCCTTAAAC
 CATCACCCATCCCAGACTCTGCCAGTATGTGGATATTTCTAGGGGAAAGCATGAACGACTAGTGGTCGTG
 GCTGAACATTGTGAACGTAGTCTGGAAGACTTGCTTCGAGAAAGGAAACCTGTGAGCTGTCAACGGTTT
 TGTGTATAGCATTGAGGTTCTTCAGGGCTTGCAGTATATGAACAAACATGGTATAGTACACAGGGCATT
 GTCTCCTCATAATATCCTGTTGGACCGAAAGGGACATATTAATTTGGCTAAATTTGGACTTTATCACATG
 ACAGCTCATGGTATGATGTTGATTTCCCAATAGGGTATCCCTCGTACTTGGCCCCTGAGGTAATTGCAC
 AGGGAATTTTCAAACCACTGATCACATGCCAAGTAAAAACCAATTGCCTTCTGGCCCCAAATCAGATGT
 ATGGTCTCTTGAATCATTTTATTTGAGCTTTGTGTGGGAAGAAAATTTTTCAGAGCTTGGATATTTCT
 GAAAGACTAAAATTTTGGCTTACTTTGGATTGTGTAGATGACACTTAAATAGTTCTGGCTGAAGAGCATG
 GTTGTGGGACATTATAAAGGAGCTTCTGAAACTGTGATAGATCTTTTGAATAAGTGCCTTACCTTCCA
 TCCTTCTAAGAGGCCAACCCAGATGAATTAATGAAGGACAAAGTATTCAGTGAGGTATCACCTTTATAT
 ACCCCCTTTACCAAACCTGCCAGTCTGTTTTTCACTTCTCTGAGATGTGCTGATTTAACTCTGCCTGAGG
 ATATCAGTCAGTTGTGTAAGATATAAAATGATTACCTGGCAGAAAGATCTATTGAAGAAGTGTATTA
 CCTTTGGTGTGGCTGGAGGTGACTTGGAGAAAGAGCTTGTCAACAAGGAAATCATTGATCCAAACCA
 CCTATTCGCACACTCCCAATTTTCTCTTTGAGGATGGTAAAGCTTTGGACAAGGTCGAGATGAAAGCT
 CGCTTTTAGATGATACCAGTGTGACATTTGCTGTTATGCCAGCTAAGAAATAGATTGAAGATGTTGGTGG
 AGAAGCATTTTACCCATTACTTGAAGATGACCAGTCTAATTTACCTCATTCAAACAGCAATATGAGTTG
 TCTGCAGCTGCCACGCTCCCTTTAATCATCAGAGAGAAGGATACAGAGTACCAACTAAATAGAATTATTC
 TCTTCGACAGGCTGCTAAAGGCTTATCCATATAAAAAAACCAAACTCTGGAAAGAAGCAAGAGTTGACAT
 TCCTCCTCTTATGAGAGGTTTAACTGGGCTGCTCTTCTGGGAGTTGAGGGAGCTATTCATGCCAAGTAC
 GATGCAATTGATAAAGACACTCCAATTCCTACAGATAGACAAATGAAGTGGATATTCCTCGCTGCATC
 AGTACGATGAAGTGTATCATCACCAGAAGGTCATGCAAAATTTAGGCGTGTATTAAGGCTGGGTAGT
 GTCTCATCCTGATCTTGTGATTGGCAAGGCTTGACTCACTTTGTGCTCCATTCCTATATCTAACTTC
 AATAATGAAGCCTTGGCTTATGCATGTATGCTGCTTTTATTCCCAAATACCTGTATAACTTCTTCTTAA
 AAGACAACCTCACATGTAATACAAGAGTATCTGACTGTCTTCTCTCAGATGATTGCATTTTCATGATCCAGA
 GCTGAGTAATCATCTCAATGAGATTGGTTTCATTCCAGATCTCTATGCCATCCCTTGGTTTCTTACCATG
 TTTACTCATGATTTCCACTACACAAAATTTCCACCTCTGGGATACCTTACTACTTGGGAATTCCTCTT
 TCCCATTTCTGATTGGAGTAGCAATTTTCAGCAGCTGCGGGACCGGCTTTTGGCTAATGGCTTAAATGA
 GTGATTTCTTCTTCTCCGATTTACCAGAAATGACATTGAACGCTGTGTGAGAGAATCTATCAACCTG
 TTTTGTGGACTCCTAAAAGTGTACTTACAGACAGCATGCTCAACCTCCAAAGCCATCTTCTGACAGCA
 GTGGAGGCAGAAGTTCGGCACCTTATTTCTGCTGAGTGTCCAGATCTCCAAAGACAGATCTGTCAAG
 AGAATCCATCCCATTAATGACCTGAAGTCAGAAGTATCACCACGGATTTTCAGCAGAGGACCTGATTGAC
 TTGTGTGAGCTCACAGTGACAGGCCACTTCAAACACCCAGCAAGAAAACAAAGTCCAGTAAACCAAAGC
 TCCTGGTGGTTGACATCCGGAATAGTGAAGACTTTATTCGTGGTACATTTTCAGGAAGCATCAACATTCC
 ATTCAGTGCTGCCTTCACTGCAGAAGGGGAGCTTACCCAGGGCCCTTACACTGCTATGCTCCAGAATTC
 AAAGGGAAGGTCATTGTCATCGTGGGCATGTGGCAAAACACACAGCTGAGTTTGCAGCTCACCTTGTGA
 AGATGAAATATCCAAGAATCTGTATTCTAGATGGTGGCATTAAATAAAATAAAGCCAACAGGCCTCTCAC
 CATCCCATCTCTCAAATA

ACGCGTACGCGGCCGCTCGAGCAGAAACTCATCTCAGAAGAGGATCTGGCAGCAATGATATCCTGGATT
 ACAAGGATGACGACGATAAGGTTTAA

Protein Sequence: >RC228610 representing NM_001163435
 Red=Cloning site Green=Tags(s)

MFPLKDAEMGAFTFFASALPHDVCGSNGLPLTPNSIKILGRFQILKTITHPRLCQYVDISRKHERLVVV
 AEHCERSLEDLLRERKPVSCSTVLCIAFEVLQGLQYMNKHGIVHRALSPHNILLDRKGHIKAKFGLYHM
 TAHGDDVDFFIGYPSYLAPEVIAQGIKFTTDHMPSSKPLPSGPKSDVWSLGIILFELCVGRKLFQSLDIS
 ERLKFLLLTDCVDDTLIVLAAEEHGCLDIKELPETVIDLLNKCLTFHPSKRPTPDELMDKDKVFSEVSPLY
 TPFTKPASLFSSSLRCADLTLPEDISQLCKDINNDYLAERSIEEVYYLWCLAGGDLEKELVNKEIIRSKP
 PICTLPNPLFEDGESFGQGRDRSSLDDTTVTLSLQCLRNRKLDVGGAEFYPLEDDQSNLPHSNNNEL
 SAAATLPLIIREKDTEYQLNRIILFDRLLKAYPYKKNQIWKEARVDIPPLMRGLTWAALLGVEGAIHAKY
 DAIDKDTPIPTDRQIEVDIPRCHQYDELLSSPEGHAKFRRVLKAWVVSHPDLVYVWQGLDSLCAFPFLYLN
 NNEALAYACMSAFIPKYLNFYFLKDNSHVIQEYLVFVSQMIAFHDPELS NHLNEIGFIPDLYAIPWFLTM
 FTHVFPFLHKIFHLWDTLLGNSSFPFCIGVAILQQLRDRLLANGFNECILLFSDLPEIDIERCVRESINL
 FCWTPKSA TYRQHAQPPKSSDSSGGRSSAPYFSAECPDPPKTDLSRESIPLNDLKSEVSPRISAEDLID
 LCELTVTGHFKTPSKKTKSSKPKLLVVDIRNSED FIRGHSINIPFSAFTAEGELTQGPYTAMLQNF
 KGKVIIVGHVAKHTAEFAAHLVKMKYPRICILDGGINKIKPTGLLTIPSPQI

TRTRPLEQKLISEEDLAANDILDYKDDDDKV

Chromatograms: https://cdn.origene.com/chromatograms/mk8007_a04.zip

Restriction Sites: SgfI-MluI

Cloning Scheme:

Cloning sites used for ORF Shuttling:

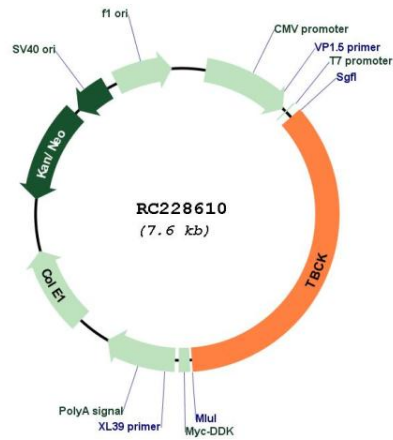


* The last codon before the Stop codon of the ORF

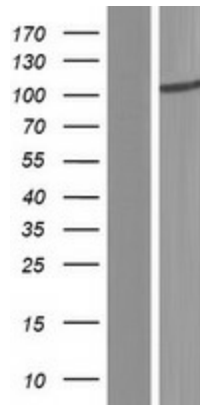
ACCN: NM_001163435

ORF Size:	2679 bp
OTI Disclaimer:	The molecular sequence of this clone aligns with the gene accession number as a point of reference only. However, individual transcript sequences of the same gene can differ through naturally occurring variations (e.g. polymorphisms), each with its own valid existence. This clone is substantially in agreement with the reference, but a complete review of all prevailing variants is recommended prior to use. More info
OTI Annotation:	This clone was engineered to express the complete ORF with an expression tag. Expression varies depending on the nature of the gene.
Components:	The ORF clone is ion-exchange column purified and shipped in a 2D barcoded Matrix tube containing 10ug of transfection-ready, dried plasmid DNA (reconstitute with 100 ul of water).
Reconstitution Method:	<ol style="list-style-type: none">1. Centrifuge at 5,000xg for 5min.2. Carefully open the tube and add 100ul of sterile water to dissolve the DNA.3. Close the tube and incubate for 10 minutes at room temperature.4. Briefly vortex the tube and then do a quick spin (less than 5000xg) to concentrate the liquid at the bottom.5. Store the suspended plasmid at -20°C. The DNA is stable for at least one year from date of shipping when stored at -20°C.
RefSeq:	NM_001163435.2 , NP_001156907.1
RefSeq ORF:	2682 bp
Locus ID:	93627
UniProt ID:	Q8TEA7
Cytogenetics:	4q24
Protein Families:	Druggable Genome, Protein Kinase
MW:	100.5 kDa
Gene Summary:	This gene encodes a protein that contains a protein kinase domain, a Rhodanase-like domain and the Tre-2/Bub2/Cdc16 (TBC) domain. The encoded protein is thought to play a role in actin organization, cell growth and cell proliferation by regulating the mammalian target of the rapamycin (mTOR) signaling pathway. This protein may also be involved in the transcriptional regulation of the components of the mTOR complex. Alternative splicing results in multiple transcript variants. [provided by RefSeq, Mar 2014]

Product images:



Circular map for RC228610



Western blot validation of overexpression lysate (Cat# [LY431639]) using anti-DDK antibody (Cat# [TA50011-100]). Left: Cell lysates from untransfected HEK293T cells; Right: Cell lysates from HEK293T cells transfected with [RC228611] using transfection reagent MegaTran 2.0 (Cat# [TT210002]).