

Product datasheet for **RC228608**

DISC1 (NM_001164537) Human Tagged ORF Clone

Product data:

Product Type:	Expression Plasmids
Product Name:	DISC1 (NM_001164537) Human Tagged ORF Clone
Tag:	Myc-DDK
Symbol:	DISC1
Synonyms:	C1orf136; SCZD9
Mammalian Cell Selection:	Neomycin
Vector:	pCMV6-Entry (PS100001)
E. coli Selection:	Kanamycin (25 ug/mL)



[View online »](#)

Protein Sequence: >RC228608 representing NM_001164537
 Red=Cloning site Green=Tags(s)

MPGGGPQGAPAAAGGGGVSHRAGSRDCLPPAACFRRRRLARRPGYMRSSSTGPGIGFLSPAVGTLFRFPGG
 VSGEESHSESRARQCGLDSRGLLVRSVSKSAAAPT VTSVRGTSAHFGIQLRGGTRLPDRLSWPCGPGS
 AGWQQEFAAMDSSSETLDASWEAACSDGARRVRAAGSLPSAELSSNSCSPGCGPEVPTPPGSHSAFTSSF
 SFIRLSLGSAGERGEAEGCPPSREAE SHCQSPQEMGAKAASLDGPHEDPRCLSRPFSLLATRVSADLAQA
 ARNSSRPERDMHSLPMDPGSSSLDPSLAGCGGDGSSGSDAHSWDTLLRKWEPVLRDCLLRNRRQMEV
 ISLRKLKQLQEDAVENDDYDKVETGFHYVQAGLELLTSSNPPASASQSAGITAETLQQRLEDLEQEKI
 SLHFQLPSRQPALSSFLGHLAAQVQAALRRGATQQASGDDTHTPLRMEPRLLEPTAQDSLHVSITRRDWL
 LQEKQQLQKEIEALQARMFVLEAKDQQLRREIEEQQLQWQGC DLTPVGQLSLGQLQEVSKALQDTLA
 SAGQIPFHAPEPETIRSLQERIKSLNLSLKEITTKVCMSEKFCSTLRKKVNDIETQLPALLEAKMHAISG
 NHFWTAKDLTEEIRSLT SEREGLEGLLSKLLVSSRNKKLGSVKEDYNRLRREVEHQETAYETSVKENT
 MKYMETLKNKLCCKCPLLKGVWEADLEACRLLIQSLQLQEQARGSLSVEDERQMDDEGAAPP IPPRLHS
 EDKRKTP LKVL EEWKTHLIPSLHCAGGEQKEESYILSAELGEKCEDIGKLLYLEDQLHTAIHSHDEDLI
 QSLRRELQMVKETLQAMILQLQPAKEAGEREAAA SCMTAGVHEAQA

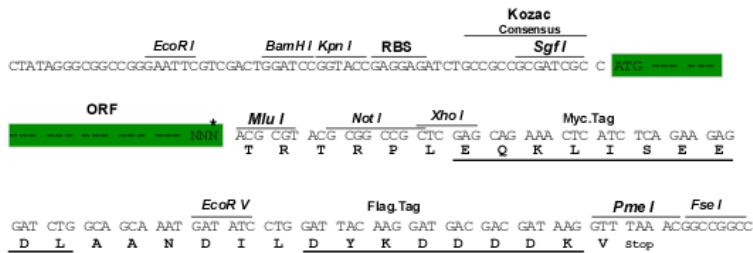
TRTRPLEQKLISEEDLAANDILDYKDDDDKV

Chromatograms: https://cdn.origene.com/chromatograms/ja3208_b11.zip

Restriction Sites: SgfI-MluI

Cloning Scheme:

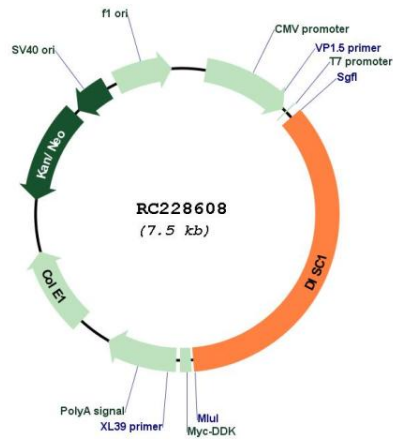
Cloning sites used for ORF Shuttling:



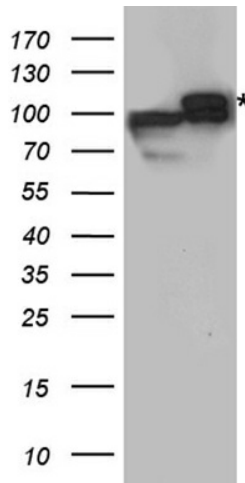
* The last codon before the Stop codon of the ORF

ACCN:	NM_001164537
ORF Size:	2658 bp
OTI Disclaimer:	The molecular sequence of this clone aligns with the gene accession number as a point of reference only. However, individual transcript sequences of the same gene can differ through naturally occurring variations (e.g. polymorphisms), each with its own valid existence. This clone is substantially in agreement with the reference, but a complete review of all prevailing variants is recommended prior to use. More info
OTI Annotation:	This clone was engineered to express the complete ORF with an expression tag. Expression varies depending on the nature of the gene.
Components:	The ORF clone is ion-exchange column purified and shipped in a 2D barcoded Matrix tube containing 10ug of transfection-ready, dried plasmid DNA (reconstitute with 100 ul of water).
Reconstitution Method:	<ol style="list-style-type: none">1. Centrifuge at 5,000xg for 5min.2. Carefully open the tube and add 100ul of sterile water to dissolve the DNA.3. Close the tube and incubate for 10 minutes at room temperature.4. Briefly vortex the tube and then do a quick spin (less than 5000xg) to concentrate the liquid at the bottom.5. Store the suspended plasmid at -20°C. The DNA is stable for at least one year from date of shipping when stored at -20°C.
RefSeq:	NM_001164537.2
RefSeq Size:	7165 bp
RefSeq ORF:	2661 bp
Locus ID:	27185
Cytogenetics:	1q42.2
MW:	96.8 kDa
Gene Summary:	This gene encodes a protein with multiple coiled coil motifs which is located in the nucleus, cytoplasm and mitochondria. The protein is involved in neurite outgrowth and cortical development through its interaction with other proteins. This gene is disrupted in a t(1;11) (q42.1;q14.3) translocation which segregates with schizophrenia and related psychiatric disorders in a large Scottish family. Alternate transcriptional splice variants, encoding different isoforms, have been characterized. [provided by RefSeq, Jul 2008]

Product images:



Circular map for RC228608



HEK293T cells were transfected with the pCMV6-ENTRY control (Cat# [PS100001], Left lane) or pCMV6-ENTRY DISC1 (Cat# RC228608, Right lane) cDNA for 48 hrs and lysed. Equivalent amounts of cell lysates (5 ug per lane) were separated by SDS-PAGE and immunoblotted with anti-DISC1 antibody (Cat# [TA890111]). Positive lysates [LY402701] (100ug) and [LC402701] (20ug) can be purchased separately from OriGene.