

Product datasheet for **RC228606**

SAPS3 (PPP6R3) (NM_001164160) Human Tagged ORF Clone

Product data:

Product Type:	Expression Plasmids
Product Name:	SAPS3 (PPP6R3) (NM_001164160) Human Tagged ORF Clone
Tag:	Myc-DDK
Symbol:	SAPS3
Synonyms:	C11orf23; PP6R3; SAP190; SAPL; SAPLa; SAPS3
Mammalian Cell Selection:	Neomycin
Vector:	pCMV6-Entry (PS100001)
E. coli Selection:	Kanamycin (25 ug/mL)



[View online »](#)

**ORF Nucleotide
Sequence:**

>RC228606 representing NM_001164160
 Red=Cloning site Blue=ORF Green=Tags(s)

TTTTGTAATACGACTCACTATAGGGCGGCCGGGAATTCGTCGACTGGATCCGGTACCGAGGAGATCTGCC
 GCC**CGGATCGCC**

ATGTTTTGGAAATTTGATCTTCACTCATCATCCCACATAGACACACTTCTAGAAAGAGAAGATGTAACAC
 TGAAGGAGTTAATGGATGAGGAAGATGTTTTACAGGAATGTAAAGCTCAGAACCACAACTTATAGAGTT
 TCTGTTAAAAGCAGAATGTCTCGAAGATTTAGTCTCATTATTATAGAAGAACCCCTCAAGACATGGAT
 GAAAAGATCAGATACAAGTATCCAAATATATCTTGTGAGTTGCTCACTTCTGATGTCTCCAGATGAATG
 ATAGACTGGGAGAAGATGAATCCTTGCTAATGAAATTATATAGCTTCTCCTAAACGATTCCCTTTGAA
 TCCACTACTTGCCAGTTTCTTCAGCAAGGTGCTAAGTATTCTTATCAGCAGAAAACCAGAACAGATTGTG
 GATTTCTAAAGAAGAAGCATGATTTTGTAGACCTTATTATAAAGCACATAGGAACCTTCTGCTATCATGG
 ATTTGTTGCTCAGGCTCCTGACGTGTATCGAACCTCCACAGCCCAGGCAAGATGTGCTGAATTGGTTAAA
 TGAGGAGAAAATTATCCAGAGGCTTGTGGAATAGTTCATCCATCGCAAGAAGAAGATCGACATTCAAAT
 GCATCACAATCACTTTGTGAAATTTGTCGCTGAGCAGAGACCAGATGTTACAAATTCAGAACAGTACAG
 AGCCCCAGCCCCTGCTTGCCACTCTAGAAAAGCAAGAAATATAGAGCAGCTTCTATCAAATATTTTCCA
 CAAGGAGAAAAATGAGTCAGCCATAGTCAGTGCATCCAGATATTGCTGACTTTACTTGAGACACGACGA
 CCAACATTTGAAGGCCATATAGAGATCTGCCACCAGGCATGAGCCATTAGCTTGTTCAGTAAACAAGA
 GTGTTCTAGAAGCCATCAGAGGAAGACTTGGATCTTTTCACTGAACCTGCTGGAGCCACCAAGAAAAG
 TGTGATGAAGACCACATGGGGTGTGCTGGATCCTCCTGTGGGGAATACCCGGTGAATGTCATTAGTTG
 ATATCCAGCCTGCTTCAAACCAATACCAGCAGTATAAATGGGGACCTTATGGAGCTGAATAGCATTGGAG
 TCATATTGAACATGTTCTTCAAGTATACATGGAATAACTTTTTGCATACACAAGTGGAAATTTGTATTGC
 ACTGATTCTTGCAAGTCTTTTGA AACACAGAAAATGCCACAATTACCGATCAAGACTCCACTGGTGAT
 AATTTGTTATTA AAAACATCTTTTCCAAAATGTCAATTAATAGAACGAATACTTGAGCCTGGGAAATGA
 ATGAGAAGAAACAGGCTGAGGGAGGAAGACGGCATGGTTACATGGGACACCTAACGAGGATAGCTAACTG
 TATCGTGCACAGCACTGACAAGGCCCAACAGTGCATTAGTGCAGCAGCTTATCAAAGATCTTCCCGAC
 GAAGTCAGGGAACGATGGGAGACGTTCTGCACAAGCTCCTTAGGAGAACTAACAAAGAGGAACACGGTAG
 ATCTAGTTACAACCTGCCATATTCATTCATCCAGTGATGATGAAATTGACTTTAAGAAACGGGTTTCTC
 ACAGGATCTTCTTTGCAGCAAGCCTTTTCTGATTATCAGATGCAACAAATGACGTCCAATTTTATTGAC
 CAGTTTGGCTTCAACGATGAGAAGTTTGCAGATCAAGATGACATTGGCAATGTTTCTTTTGTATCGAGTAT
 CAGACATCAACTTACTCTCAATACAAATGAAAGTGGAAATATTGCCTTGTTTGAAGCATGTTGTAAGGA
 AAGAATACAACAGTTTGATGATGGTGGCTCTGATGAGGAAGATATATGGGAGGAAAAGCAGATCGCATT
 ACACCAGAATCCCAAAGACGATCCAGCTCGGGGAGTACAGACAGTGGGAAAGTACAGACTCTGAAGAAG
 AAGATGGAGCAAAGCAAGACTTGTTTGAACCCAGCAGTGCCAACACGGAGGATAAAATGGAGGTGGACCT
 GAGTGAACCCCAACTGGTCAGCTAATTTGATGTCCCAATGGAACAACCCACGGTGTCCATTGGAT
 TCTGTGGGATCTGATGTCTGGAGCACAGAGGAGCCGATGCCAACTAAAGAGACGGGCTGGGCTTCTTTT
 CAGAGTTCAGCTTCCCTGAGCAGAAAAGATTCTTTAAGGAGTAATTCTCCAGTGGAAATGGAACCCAG
 CACTGAACCCATGGACCCTCTGACTCCCAGTGGGCTGCCCTGGCAGTGCAGCCAGAAGCGGCAGGCAGT
 GTGGCCATGGAAGCCAGCTCTGACGGAGAGGAGGATGCAGAAAGTACAGACAAGGTAACAGACAGTGA
 TGAATGGCGCATGAAGGAAACGCTCAGCCTCACTGTAGATGCCAAGACAGAGACTGCGGCTTCTCAAAG
 AGTGTGAAATCCTATCGTGAGGAAGGAAACTGTCTACCTCTCAAGATGCTGCTTGTAAAGACGCAGAG
 GAGTGTCCCGAGACTGCAGAGGCGAAGTGCAGCGGCCAGGCCCTCCAGCAGCAGTCCCGAGCAGAGGA
 CTGGCCAACCAAGCGCACCAAGGTGACACTTCAGTGAATGGCCCTGTA

ACGGTACGCGGCCGCTCGAGCAGAACTCATCTCAGAAGAGGATCTGGCAGCAATGATATCTGGATT
 ACAAGGATGACGACGATAAGGTTTAA

Protein Sequence: >RC228606 representing NM_001164160
 Red=Cloning site Green=Tags(s)

MFWKFDLHSSSHIDTLEREDVTLKELMDEEDVLQECKAQRKLI EFLKAECL EDLVSFII EEPQDMD
 EKIRYKYPNISCELLTSDV SQMNDRLGEDESLMKLYSFLNDSPLNPLLASFFSKVLSILISRKPEQIV
 DFLKKKHDFVDLIIKHIGTSAIMDLLRLLCIEPPQPRQDVLNWLNEEKIIQRLVEIVHPSQEEDRHSN
 ASQSLCEIVRLSRDQMLQIQNSTEPDLLATLEKQEIEQLLSNIFHKEKNESAIVSAIQILLTLETRR
 PTFEGHIEICPPGMSHSACSVNKSYLEAIRGRGSGFHELLLEPPKKSVMKTTWGVLDPPVGNTRLNVIRL
 ISSLLQTNTSSINGDLMELNSIGVILNMFKYTWNNFLHTQVEICIALILASPFENTENATITDQDSTGD
 NLLKHLFQKCQLIERILEAWEMNEKKQAEGRRRHGYMGHLTRIANCIVHSTDKGPNSALVQQLIKDLPD
 EVRERWETFCTSSLGETNKRNTVDLVTTCHIHSSSDDEIDFKETGFSQDSSLQQAQAFSDYQMOMTSNFID
 QFGFNDEKFAQDDIGNVSFDRVSDINFTLNTNESGNIALFEACCKERIQQFDDGGSDDEEIWEEKHIAF
 TPESQRRSSSGTDSEESTDSEEDGAKQDLFEPSSANTEDKMEVDLSEPPNWSANFDVPMETTHGAPLD
 SVGSDVWSTEEMPMTKETGWASFSEFTSSLSTKDSLRSNSPVEMETSTEPMDPLTPSAAALAVQPEAAGS
 VAMEASSDGEEDAESTDKVTETVMNGGMKETLSLTVDAKTETAVFKRVLKSYREEGKLSQDAACKDAE
 ECPETA EAKCAAPRPPSSPEQRTGQPSAPGDTSVNGPV

TRTRPLEQKLISEEDLAANDILDYKDDDDKV

Chromatograms: https://cdn.origene.com/chromatograms/mk8038_e07.zip

Restriction Sites: SgfI-MluI

Cloning Scheme:

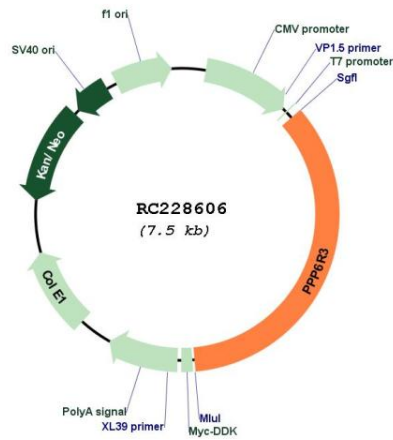
Cloning sites used for ORF Shuttling:



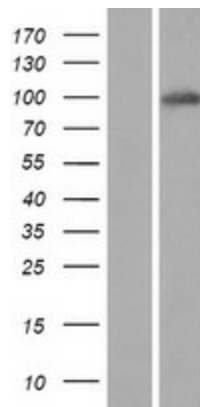
* The last codon before the Stop codon of the ORF

ACCN:	NM_001164160
ORF Size:	2637 bp
OTI Disclaimer:	The molecular sequence of this clone aligns with the gene accession number as a point of reference only. However, individual transcript sequences of the same gene can differ through naturally occurring variations (e.g. polymorphisms), each with its own valid existence. This clone is substantially in agreement with the reference, but a complete review of all prevailing variants is recommended prior to use. More info
OTI Annotation:	This clone was engineered to express the complete ORF with an expression tag. Expression varies depending on the nature of the gene.
Components:	The ORF clone is ion-exchange column purified and shipped in a 2D barcoded Matrix tube containing 10ug of transfection-ready, dried plasmid DNA (reconstitute with 100 ul of water).
Reconstitution Method:	<ol style="list-style-type: none">1. Centrifuge at 5,000xg for 5min.2. Carefully open the tube and add 100ul of sterile water to dissolve the DNA.3. Close the tube and incubate for 10 minutes at room temperature.4. Briefly vortex the tube and then do a quick spin (less than 5000xg) to concentrate the liquid at the bottom.5. Store the suspended plasmid at -20°C. The DNA is stable for at least one year from date of shipping when stored at -20°C.
RefSeq:	NM_001164160.2
RefSeq ORF:	2640 bp
Locus ID:	55291
UniProt ID:	Q5H9R7
Cytogenetics:	11q13.2
MW:	98.3 kDa
Gene Summary:	Protein phosphatase regulatory subunits, such as SAPS3, modulate the activity of protein phosphatase catalytic subunits by restricting substrate specificity, recruiting substrates, and determining the intracellular localization of the holoenzyme. SAPS3 is a regulatory subunit for the protein phosphatase-6 catalytic subunit (PPP6C; MIM 612725) (Stefansson and Brautigan, 2006 [PubMed 16769727]).[supplied by OMIM, Nov 2010]

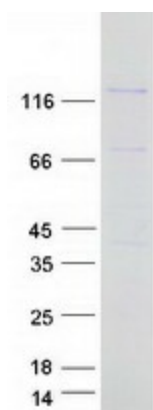
Product images:



Circular map for RC228606



Western blot validation of overexpression lysate (Cat# [LY431634]) using anti-DDK antibody (Cat# [TA50011-100]). Left: Cell lysates from untransfected HEK293T cells; Right: Cell lysates from HEK293T cells transfected with RC228606 using transfection reagent MegaTran 2.0 (Cat# [TT210002]).



Coomassie blue staining of purified PPP6R3 protein (Cat# [TP328606]). The protein was produced from HEK293T cells transfected with PPP6R3 cDNA clone (Cat# RC228606) using MegaTran 2.0 (Cat# [TT210002]).