

Product datasheet for **RC228587**

KDM4C (NM_001146695) Human Tagged ORF Clone

Product data:

Product Type:	Expression Plasmids
Product Name:	KDM4C (NM_001146695) Human Tagged ORF Clone
Tag:	Myc-DDK
Symbol:	KDM4C
Synonyms:	GASC1; JHDM3C; JMJD2C; TDRD14C
Mammalian Cell Selection:	Neomycin
Vector:	pCMV6-Entry (PS100001)
E. coli Selection:	Kanamycin (25 ug/mL)



[View online »](#)

ORF Nucleotide Sequence:

>RC228587 representing NM_001146695
 Red=Cloning site Blue=ORF Green=Tags(s)

TTTTGTAATACGACTCACTATAGGGCGGCCGGAATTCGTCGACTGGATCCGGTACCGAGGAGATCTGCC
 GCC**CGCATCGCC**

ATGGAGGTGGCCGAGGTGAAAAGTCTCTGAACCCAGCTGTAAGATAATGACCTTCAGACCCTCCATGG
 AGGAGTTCGGGAGTTCAACAAATACCTTGCATACATGGAGTCTAAAGGAGCCCATCGTGCGGGTCTTGC
 AAAGGTGATTCTCTAAGGAGTGAAGCCAAGACAGTGTATGATGACATTGATAATTTGCTCATTCCA
 GCACCAATTCAGCAGATGGTCACAGGGCAGTCAGGACTGTTCACTCAGTACAACATCCAGAAAAAGCGA
 TGAAGTGTGAAGGAGTTCAGGCAGCTGGCCAACAGTGGCAAATATTGTAAGTCCAAAGATACTGGATTACGA
 AGATTTGGAGCGCAAGTACTGGAAGAATTAACTTTTGTGGCACCTATCTATGGTGCAGATATTAATGGG
 AGCATATATGATGAGGTGTGGATGAATGGAACATAGCTCGCCTCAATACAGTCTGGATGTGGTTGAAG
 AAGAGTGTGGCATTCTATTGAGGTGTAATACCCCATATCTCTATTTTGGCATGTGGAAGACCACGTT
 TGCATGGCACACCGAAGCATGGACCTCTATAGCATTAAATATCTCCACTTTGGAGAGCCCAAGTCTTGG
 TATGCTATACCTCCGGAGCATGGAAGACGACTTGAAGACTAGCTCAAGGTTTTTCCCAAGCAGCTCCC
 AAGGGTGTGATGCATTTCTTCGCCACAAGATGACATTGATTTCTCCATCAGTATTGAAGAAATATGGTAT
 TCCCTTTGACAAGATAACCCAGGAGGCTGGAGAATTCATGATCACTTTCCCATATGGCTACCATGCTGGT
 TTTAATCATGGTTTCAACTGTGCAGAACTACAAAATTTGCTACTGTCAGATGGATTGACTATGAAAAAG
 TTGCCAAATTGTGCACTTGCAGGAAAGACATGGTGAAGATTTCAATGGATATCTTTGTGAGGAAATTTCA
 GCCAGACAGATATCAGCTTTGAAAAAAGGAAAGGATATATACACCATTGATCACACGAAGCCTACTCCA
 GCATCCACCCCTGAAGTAAAAGCATGGCTGCAGAGGAGGAGGAAAGTAAGAAAAGCATCCCGAAGCTTCC
 AGTGTGCTAGGTCTACCTCTAAAAGGCCTAAGGCTGATGAGGAAGAGGAAGTGTGAGTGAAGTGCAGTGG
 GGCAGAGGTCCCTAACCCCGACTCAGTCACAGATGACCTCAAGGTCAGTAAAAGTCAGAAGCAGCAGTG
 AAGCTGAGGAACACAGAAGCATCTTCAGAAGAAGATCATCTGCTAGCAGGATGCAGGTGGAGCAGAATT
 TATCAGATCATATCAAATCTCAGGAAACAGCTGCTTAAGTACATCTGTAACAGAAGACATAAAAACTGA
 GGATGACAAAGCTTATGCATATAGAAGTGTACCTTCTATATCCAGTGGGCTGATGATTCCATTCCATTG
 TCTAGTGGCTATGAGAAGCCGAGAAATCAGACCCATCCGAGCTTTCATGGCCAAAGTCACCTGAGTCAT
 GCTCATCAGTGGCAGAGAGTAATGGTGTGTTAACAGAGGGAGAAGAGAGTGTGAGGAGCCATGGGAA
 TGGCCTTGAACCTGGGAAATCCAGCGGTCCCAGTGGAGAGAGAAATAGCTTCAAAGTCCCAGTATA
 GCAGAGGGAGAGAAACAACTCTAAGAGTTGGCGCCATCCACTTAGCAGGCCTCCAGCAAGATCTCCGA
 TGAATCTTGTGAAGCAGCAGGCGCAAGTGTGAAGAATTGCCTGAGGTTCTGTCCATTGAGGAGGAAGT
 GGAAGAAACAGAGTCTTGGGCGAAACCTCTCATCCACCTTTGGCAGACGAAGTCCCCTAACTTCGAGCT
 GAGCAAGAGTATAATGCAACAGTGGCCAGGATGAAGCCACACTGTGCCATCTGCACTCTGCTCATGCCGT
 ACCACAAGCCAGATAGCAGCAATGAAGAAAATGATGCTAGATGGGAGACAAAATAGATGAAGTCGTTAC
 ATCGGAGGGAAAGACTAAGCCCCATACCAGAGATGTGTTTTATTTATAGTGAAGAAAATATAGAATAT
 TCTCCACCAATGCCTTCCTTGAAGAGGATGGAACAAGTCTCCTTATTTCTGTGCAAAGTGTGCGTAC
 GGGTTCATGCAAGTTGTTATGGTATTCTTCTCATGAGATCTGTGATGGATGGCTGTGTGCCCGGTGCAA
 AAGAAAATGCGTGGACAGCAGAATGCTGTCTGCAATTTGAGAGGAGGTGCTCTTAAGCAAACGAAGAAC
 AATAAGTGGGCCATGTCATGTGCGCCGTGCGGTCCCAGAAGTTCGATTCACTAATGTCCCAGAAAAGGA
 CACAAATAGATGTAGGCAGAATACCTTTACAGAGGTTAAAATTGGGAAGGCTGGGAATC

ACGCGTACGCGGCCGCTCGAGCAGAACTCATCTCAGAAGAGGATCTGGCAGCAAATGATATCCTGGATT
 ACAAGGATGACGACGATAAGGTTTAA

Protein Sequence: >RC228587 representing NM_001146695
 Red=Cloning site Green=Tags(s)

```

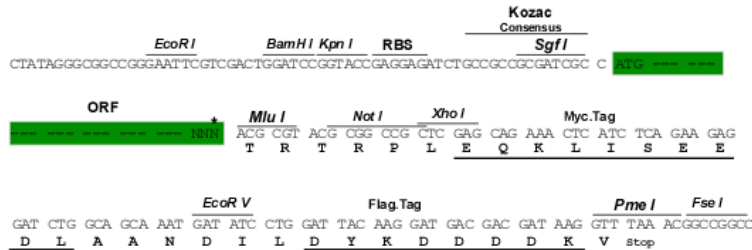
MEVAEVESPLNPSCIMTFRPSMEEFREFNKYLAYMESKGAHRAGLAKVIPPKEWKPRQCYDDIDNLLIP
APIQQMVTGQSGFLTQYNIQKKAMTVKEFRQLANSKGYCTPRYLDYEDLERKYWKNLTFVAPIYGADING
SIYDEGVDEWNIARLNTVLDVVEEECGISIEGVNTPYL YFGMWKTTFAWHTEDMDLYSINYLHFGEPKSW
YAIPEHGKRLERLAQGFPPSSSQGDAFLRHKMTLISPSVLKKYGIPFDKITQEAGEFMITFPYGYHAG
FNHGFNCAESTNFATVRWIDYGKVAKLCTCRKDMVKISMDIFVRKFQPDYQLWKQKDIYTIIDHTKPTP
ASTPEVKAWLQRRRKVRKASRSFQCARSTSKRPKADEEEVSDEVDGAEVNPDSVTDDLKVSEKSEAAV
KLRNTEASSEEESSASRMQVEQNLSDHIKLSGNSCLSTSVTEDIKTEDDKAYAYRSVPSISSEADDSIPL
SSGYEKPEKSDPSEL SWPKSPESCSSVAESNGVLTEGEE SDVESHGNGLEPGEIPAVPSGERNSFKVPSI
AEGENKTSKSWRHPLSRPPARSPMTLVKQQAPSDEELPEVLSIEEEVEETESWAKPLIHLWQTKSPNFAA
EQEYNATVARMKPHCAICTLLMPYHKPDSNEENDARWETKLDEVVTSEGKTKPLIPEMCFIYSEENIEY
SPPNAFL EEDGTSLLISCAKCCVRVHASCYGIPSHEICDGWLCARCKRNAWTAECCLCNLRGGALKQTKN
NKWAHVMAVAVPEVRF TNPVERTQIDVGRIPLQRLKLGRLGI
  
```

TRTRPLEQKLI SEEDLAANDILDYKDDDDKV

Restriction Sites: Sgfl-Mlul

Cloning Scheme:

Cloning sites used for ORF Shuttling:



* The last codon before the Stop codon of the ORF

ACCN: NM_001146695

ORF Size: 2439 bp

OTI Disclaimer: The molecular sequence of this clone aligns with the gene accession number as a point of reference only. However, individual transcript sequences of the same gene can differ through naturally occurring variations (e.g. polymorphisms), each with its own valid existence. This clone is substantially in agreement with the reference, but a complete review of all prevailing variants is recommended prior to use. [More info](#)
OTI Annotation: This clone was engineered to express the complete ORF with an expression tag. Expression varies depending on the nature of the gene.

Components: The ORF clone is ion-exchange column purified and shipped in a 2D barcoded Matrix tube containing 10ug of transfection-ready, dried plasmid DNA (reconstitute with 100 ul of water).

Reconstitution Method:

1. Centrifuge at 5,000xg for 5min.
2. Carefully open the tube and add 100ul of sterile water to dissolve the DNA.
3. Close the tube and incubate for 10 minutes at room temperature.
4. Briefly vortex the tube and then do a quick spin (less than 5000xg) to concentrate the liquid at the bottom.
5. Store the suspended plasmid at -20°C. The DNA is stable for at least one year from date of shipping when stored at -20°C.

RefSeq: [NM_001146695.4](#)

RefSeq ORF: 2442 bp

Locus ID: 23081

UniProt ID: [Q9H3R0](#)

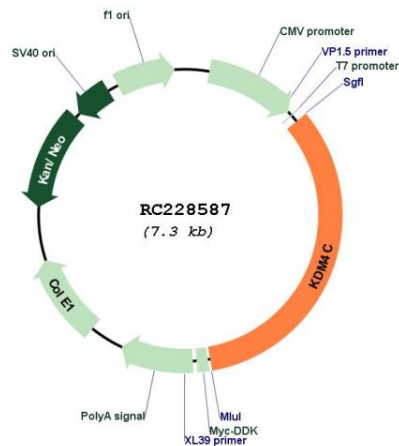
Cytogenetics: 9p24.1

Protein Families: Druggable Genome, Transcription Factors

MW: 91.7 kDa

Gene Summary: This gene is a member of the Jumonji domain 2 (JMJD2) family. The encoded protein is a trimethylation-specific demethylase, and converts specific trimethylated histone residues to the dimethylated form. This enzymatic action regulates gene expression and chromosome segregation. Chromosomal aberrations and changes in expression of this gene may be found in tumor cells. Alternative splicing results in multiple transcript variants. [provided by RefSeq, Jan 2015]

Product images:



Circular map for RC228587