

Product datasheet for **RC228586**

FGFR3 (NM_001163213) Human Tagged ORF Clone

Product data:

Product Type:	Expression Plasmids
Product Name:	FGFR3 (NM_001163213) Human Tagged ORF Clone
Tag:	Myc-DDK
Symbol:	FGFR3
Synonyms:	ACH; CD333; CEK2; HSGFR3EX; JTK4
Mammalian Cell Selection:	Neomycin
Vector:	pCMV6-Entry (PS100001)
E. coli Selection:	Kanamycin (25 ug/mL)



[View online »](#)

ORF Nucleotide Sequence:

>RC228586 representing NM_001163213
 Red=Cloning site Blue=ORF Green=Tags(s)

TTTTGTAATACGACTCACTATAGGGCGGCCGGGAATTCGTCGACTGGATCCGGTACCGAGGAGATCTGCC
 GCC**GCGATCGCC**

ATGGGCGCCCTGCCTGCGCCCTCGCGCTCTCGTGGCCGTGGCCATCGTGGCCGGCGCCTCCTCGGAGT
 CCTTGGGACGGAGCAGCGCGTCTGGGGCAGCGGCAGAAAGTCCCGGGCCAGAGCCCGCCAGCAGGA
 GCAGTTGGTCTTCGGCAGCGGGGATGCTGTGGAGCTGAGCTGTCCCCGCCCCGGGGTGGTCCCATGGGG
 CCCACTGTCTGGGTCAAGGATGGCACAGGGCTGGTGCCTCGGAGCGTGTCTGGTGGGGCCCCAGCGGC
 TGCAGGTGCTGAATGCCTCCACGAGGACTCCGGGCCTACAGCTGCCGGCAGCGGCTCACGACGCGCT
 ACTGTGCCACTTCAGTGTGCGGGTGACAGACGCTCCATCCTCGGGAGATGACGAAGACGGGGAGGACGAG
 GCTGAGGACACAGGTGTGGACACAGGGGCCCTTACTGGACACGGCCGAGCGGATGGACAAGAAGCTGC
 TGGCCGTGCCGGCCCAACACCGTCCGCTTCCGCTGCCAGCCGCTGGCAACCCCACTCCCTCCATCTC
 CTGGCTGAAGAACGGCAGGGAGTCCGCGGCGAGCACCGCATTGGAGGCATCAAGCTGCGGCATCAGCAG
 TGGAGCCTGGTCAATGAAAGCGTGGTGCCTCGGACCGCGCAACTACACCTGCGTGTGGAGAACAAGT
 TTGGCAGCATCCGGCAGACGTACACGCTGGACGTGCTGGAGCGCTCCCCGACCGGCCATCCTGCAGGC
 GGGGCTGCCGGCAACCAGACGGCGGTGCTGGGCAGCGACGTGGAGTTCCACTGCAAGGTGTACAGTGAC
 GCACAGCCCCACATCCAGTGGTCAAGCACGTGGAGGTGAATGGCAGCAAGTGGGCCGGACGGCACAC
 CCTACGTTACCGTGTCAAGTCTGGATCAGTGAAGTGTGGAGGCCGACGTGCGCTCCGCTGGCCAA
 TGTGTGGAGCGGGACGGGGCGAGTACCTCTGTGAGCCACCAATTTTATAGGCGTGGCCGAGAAGGCC
 TTTTGGCTGAGCGTTCACGGGCCCGAGCAGCCGAGGAGGAGCTGGTGGAGGCTGACGAGCGGGCAGTG
 TGTATGCAGGCATCCTCAGCTACGGGGTGGCTTCTTCTGTTATCCTGGTGGTGGCGGCTGTGAGGCT
 CTGCCGCTGCGCAGCCCCCAAGAAAGGCTGGGCTCCCCACCGTGCACAAGATCTCCGCTTCCCG
 CTAAGCGACAGGTGTCCTGGAGTCCAACGCGTCCATGAGCTCCAACACACCACTGGTGCGCATCGCAA
 GGCTGTCTCAGGGGAGGGCCCCACGCTGGCCAATGTCTCCGAGCTCGAGCTGCCTGCCACCCCAATG
 GGAGCTGTCTCGGGCCCGGTGACCCTGGGCAAGCCCCTTGGGGAGGGCTGCTTCGGCCAGGTGGTCATG
 GCGGAGGCCATCGGCATTGACAAGGACCGGGCCCAAGCCTGTCACCGTAGCCGTGAAGATGCTGAAAG
 ACGATGCCACTGACAAGGACCTGTCGGACCTGGTGTCTGAGATGGAGATGATGAAGATGATCGGAAACA
 CAAAAACATCATCAACCTGCTGGGCGCTGCACGCAGGGCGGGCCCTGTACGTGCTGGTGGAGTACGG
 GCCAAGGGTAACCTGCGGGAGTTTCTGCGGGCGCGGGCCCCGGCCCTGGACTACTCCTTCGACACCT
 GCAAGCCGCCGAGGAGCAGCTACCTTCAAGGACCTGGTGTCTGTGCCTACCAGGTGGCCCGGGCAT
 GGAGTACTTGGCCTCCAGAAAGTGCATCCACAGGGACCTGGCTGCCCGCAATGTGCTGGTACCGAGGAC
 AACGTGATGAAGATCGCAGACTTCGGGCTGGCCCGGGACGTGCACAACCTCGACTACTACAAGAAGACAA
 CCAACGGCCGGCTGCCCGTGAAGTGGATGGCGCCTGAGGCCTGTGTTGACCGAGTCTACACTCACCAGAG
 TGACGTCTGGTCTTTGGGGTCTGCTCTGGGAGATCTTACGCTGGGGGGCTCCCCGTACCCCGGCATC
 CCTGTGGAGGAGCTCTTCAAGCTGCTGAAGGAGGGCCACCGCATGGACAAGCCCGCAACTGCACACAG
 ACCTGTACATGATCATGCGGGAGTGTGGCATGCCGCGCCCTCCAGAGGCCACCTTCAAGCAGCTGGT
 GGAGGACCTGGACCGTGTCTTACCGTGACGTCCACCGACGAGTACCTGGACCTGTCGGCGCCTTCGAG
 CAGTACTCCCCGGGTGGCCAGGACACCCAGCTCCAGCTCCTCAGGGGACGACTCCGTGTTGCCACAG
 ACCTGCTGCCCGGCCCCACCCAGCAGTGGGGCTCGCGGACG

ACGCGGCCGCTCGAGCAGAACTCATCTCAGAAGAGGATCTGGCAGCAAATGATATCCTGGA
TTACAAGGATGACGACGATAAGGTTTAA

Protein Sequence:

>RC228586 representing NM_001163213
 Red=Cloning site Green=Tags(s)

```

MGAPACALALCVAVAIVAGASSESLGTEQRVVGRAAEVPGPEPGQEQQLVFGSGDAVELSCPPPGGGPMG
PTVWVKDGTGLVPSERVLVGPQRLQVLNASHEDSGAYSCRQRLTQRVLCHF SVRVTDAPSSGDDEDEGEDE
AEDTGVDTGAPYWTRPERMDKLLAVPAANTVRFRCPAAGNPTPSISWLKNGREFRGEHRIGGIKLRHQQ
WSLVMESVVPSSDRGNYTCVVENKFGSIRQTYTLDVLEERSPHRPILQAGLPANQTAVLGSDVEFHCKVYSD
AQPHIQWLKHVEVNGSKVGPDPYVTVLKSWISESVEADVRLRLANVSRDGGEYLCRATNFIGVAEKA
FWLSVHGPRAAEEELVEADEAGSVYAGILSYGVGFLLF ILVVAAVTLCRLRSPPKKGLGSPTVHKISRFP
LKRQVSLESNASMSSNTPLVRIARLSSGEGPTLANVSELELPADPKWELSRARLTGKPLGEGCFGQVVM
AEAIGIDKDRAAKPVTVAVKMLKDDATDKDLSLVSEMEMMKMIGKHKNIINLLGACTQGGPLYVLVEYA
AKGNLREFLRARRPPGLDYSFDTCKPPEEQLTFKDLVSCAYQVARGMEYLASQKCIHRDLAARNVLVTE
NVMKIADFGFLARDVHNLDYKKT TNGRLPVKWMPEALFDRVYTHQSDVWSFGVLLWEIFTLGGSPYPI
PVEELFKLLKEGHRMDKPANCTHDLYMIMRECWAAPSQRPTFKQLVEDLDRVLTVTSTDEYLDLSAPFE
QYSPGGQDTPSSSSSGDDSVFAHDLLPPAPPSSGGSR
  
```

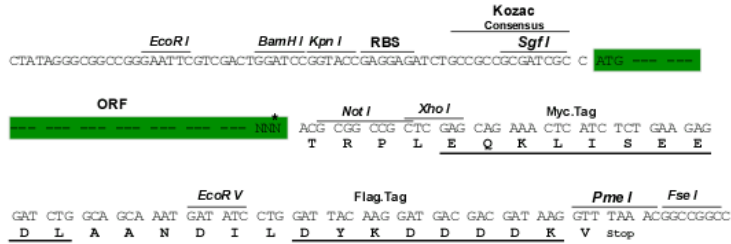
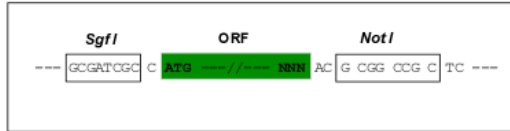
TRRLEQKLI SEEDLAANDILDYKDDDDKV

Restriction Sites:

Sgfl-NotI

Cloning Scheme:

Cloning sites used for ORF Shuttling:



* The last codon before the Stop codon of the ORF

ACCN: NM_001163213

ORF Size: 2424 bp

OTI Disclaimer: Due to the inherent nature of this plasmid, standard methods to replicate additional amounts of DNA in E. coli are highly likely to result in mutations and/or rearrangements. Therefore, OriGene does not guarantee the capability to replicate this plasmid DNA. Additional amounts of DNA can be purchased from OriGene with batch-specific, full-sequence verification at a reduced cost. Please contact our customer care team at custsupport@origene.com or by calling 301.340.3188 option 3 for pricing and delivery.

The molecular sequence of this clone aligns with the gene accession number as a point of reference only. However, individual transcript sequences of the same gene can differ through naturally occurring variations (e.g. polymorphisms), each with its own valid existence. This clone is substantially in agreement with the reference, but a complete review of all prevailing variants is recommended prior to use. [More info](#)

OTI Annotation: This clone was engineered to express the complete ORF with an expression tag. Expression varies depending on the nature of the gene.

Components: The ORF clone is ion-exchange column purified and shipped in a 2D barcoded Matrix tube containing 10ug of transfection-ready, dried plasmid DNA (reconstitute with 100 ul of water).

Reconstitution Method:

1. Centrifuge at 5,000xg for 5min.
2. Carefully open the tube and add 100ul of sterile water to dissolve the DNA.
3. Close the tube and incubate for 10 minutes at room temperature.
4. Briefly vortex the tube and then do a quick spin (less than 5000xg) to concentrate the liquid at the bottom.
5. Store the suspended plasmid at -20°C. The DNA is stable for at least one year from date of shipping when stored at -20°C.

RefSeq: [NM_001163213.1](#), [NP_001156685.1](#)

RefSeq ORF: 2427 bp

Locus ID: 2261

UniProt ID: [P22607](#)

Cytogenetics: 4p16.3

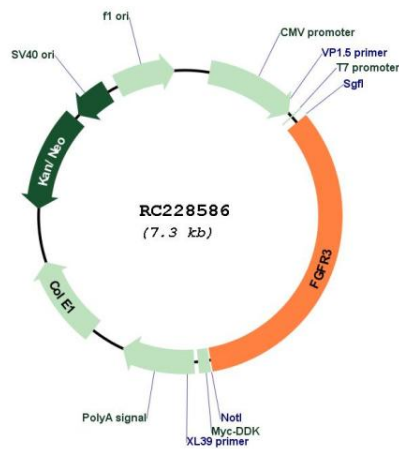
Protein Families: Druggable Genome, Protein Kinase, Transmembrane

Protein Pathways: Bladder cancer, Endocytosis, MAPK signaling pathway, Pathways in cancer, Regulation of actin cytoskeleton

MW: 88.16 kDa

Gene Summary:

This gene encodes a member of the fibroblast growth factor receptor (FGFR) family, with its amino acid sequence being highly conserved between members and among divergent species. FGFR family members differ from one another in their ligand affinities and tissue distribution. A full-length representative protein would consist of an extracellular region, composed of three immunoglobulin-like domains, a single hydrophobic membrane-spanning segment and a cytoplasmic tyrosine kinase domain. The extracellular portion of the protein interacts with fibroblast growth factors, setting in motion a cascade of downstream signals, ultimately influencing mitogenesis and differentiation. This particular family member binds acidic and basic fibroblast growth hormone and plays a role in bone development and maintenance. Mutations in this gene lead to craniosynostosis and multiple types of skeletal dysplasia. [provided by RefSeq, Aug 2017]

Product images:


Circular map for RC228586