

Product datasheet for **RC228580**

CASS4 (NM_001164116) Human Tagged ORF Clone

Product data:

Product Type:	Expression Plasmids
Product Name:	CASS4 (NM_001164116) Human Tagged ORF Clone
Tag:	Myc-DDK
Symbol:	CASS4
Synonyms:	C20orf32; CAS4; HEFL; HEPL
Mammalian Cell Selection:	Neomycin
Vector:	pCMV6-Entry (PS100001)
E. coli Selection:	Kanamycin (25 ug/mL)



[View online »](#)

ORF Nucleotide
Sequence:

>RC228580 representing NM_001164116
Red=Cloning site Blue=ORF Green=Tags(s)

TTTTGTAATACGACTCACTATAGGGCGGCCGGAATTCGTGACTGGATCCGGTACCGAGGAGATCTGCC
GCC**CGCATCGCC**

ATGAAGGGAACAGGCATCATGGACTGTGCGCCCAAGCCTCCTGGCCAGGGCACTTTATGACAACCTGCC
CTGACTGCTCTGACGAGCTGGCTTTCAGCAGAGGGGACATCCTGACCATTCTGGAGCAACACGTGCCAGA
AAGCGAGGGTTGGTGAAGTGTTTGTCTCCATGGGAGGCAAGGCCTGGCCCTGCCAACCGCTCCAAATC
CTCACGGAGGTCGCTGCAGACAGGCCGTGCCCCCATTCCTGAGAGGCCTGGAAGAAGCTCCTGCCAGCT
CAGAGGAGACCTATCAGGTGCCACTCTACCCCGCTCCACTCCAGGCCCGTTTATGAGCAGATGAG
GAGTTGGGCGGAGGGGCCAGCCCTACTGCCAAGTCTATGAATCCCGACCTCCACCAGTGCCGGG
AGAATCATCTGTAAAAGACTCTCAGCTTCCAAAACAGGCCATCCTCACGTTCCAGACCTGTCCGGG
CCTCACTGCCGACTCTGCCTCCAGGTGTATGACGTGCCTACCCAGCACCGGGGCCCGTGGTCTGAA
GGAGCCAGAGAAGCAGCAGTTATATGACATACCAGCCAGCCCAAGAAGGCAGGACTCCATCCCCAGAC
AGCCAAGCAAGTGGGCGAGGTGTTCCCTGATATCAGTACTACCTTAAGAAGAGGCGGTACAGCACAT
TACCAAATCCTCAGAAATCGAATGGATTATGACACTCCAGTGTCTCCAGGAAAGGCCAGCGTCAGAAA
CACGCCTCTACCAGCTTTCGGAAGAATCAAGGCCCCACGCTCTCCCGAGTCCAGCTCCACTTTCTAC
AATCCTCAAGTGGCAGATCCAGGTCCCTCACTCCACAACGAATAACAATGTGCCCATGCGAAAAAAC
TCAGCCTCCAGAAATCCTTCTTATGGCTTCTTGTACCCAGAGGCACATTTCTTTGGATGAAGATGT
CAGCTACAAGTTCTTCAAGCTTCTGATTCCCGAGTGAACAGCAGAACACCAAGCCCAATATTTAT
GACATCCCTAAAGCAACGTCGAGTGTCTCAGGCTGGGAAGGAGCTGGAGAAAGCAAGGAGGTGTGAG
AGAATCCGCGGGCCATAAATCCTCATGGTTCTCCAGACGGACAACCTCCCATCTCCTGAACCGGACAG
ATTATCAGGTTCCAGTTCGACAGCAGAGCTAGCATCGTTTCTCGTGCTCCACCACATCCACCGACGAC
TCTCCAGCTTCTCCTCGGAGGAGTCAGCAAAGGAGCTCTCCTTGGACCTGGATGTGGCCAGGAGACAG
TGATGGCTCTGCAGCACAGGTGGTCAGCTCTGTGCTGGCTGATGCTCTTTGTCAGCAGGAAGTGGAG
ATTCCGAGACTATCTGGAGGCCAACATTGATGCAATCCACAGGTCCACTGATCACATAGAAGAATCTGTA
AGAGAATTTCTGGATTTGCCCCGAGGAGTCCATGGGACTGCCTGTAACTCACTGACAGTAACCTTCAGA
ACAGAATTCGGGACCAGATGCAGACCATCTCAACTCCTACCGCATCCTGCTTGAACAAAGGAAAGCTT
GGATAATCGCAATTGGCCTCTGGAAGTCTTGTGACTGACAGTGTCCAGAACAGCCAGATGACCTTGAG
AGGTTTGTGATGGTGGCAGGATGCTTCCAGAAGACATCAAGAGGTTTGCCTCCATTGTGATTGCCAATG
GAAGGCTCCTTTTTAAGCGGAACGTGAAAAGGAGAGACTGTGCAAGTACCCCAATGCAGAATTTAA
GTGTGAAAAATACATCCAGCCTCCCAAGAGAAACTGAATCACACCAAAAGAGTACCCCTTCCACTAAG
CAAAGGGAAGATGAACACTCTTCTGAACTATTAAGAAAAATAGGGCAAAATATCTGTGGACAGAATCCTG
GCCCTCTTATACCTCAGCCTTCGAGTCAACAGACTCCTGAGAGGAAACCCCGTTATCTGAACTGCCG
GCTCTACTTTGGGGCGCTCTTCAAAGCCATCAGCGCATTTACGGCAGCCTCAGCAGCAGCCAGCCCGCG
GAGATCATCACTCAGAGCAAGCTGGTCATCATGGTGGGACAGAAGCTGGTGGACACGCTGTGCATGGAGA
CCCAGGAGAGGGACGTGCGCAACGAGATCCTCCGTGGCAGCAGTACCTCTGCAGCCTGCTCAAGGACGT
AGCGCTGGCCACTAAGAATGCCGTGCTCAGTACCCAGCCCTGCCGCGCTGGGGCACCTCCAGGCGGAG
GCTGAGAAGCTGGAGCAACACACGCGGCAGTTCAGAGGGACACTGGGA

ACGCGTACGCGGCCGCTCGAGCAGAACTCATCTCAGAAGAGGATCTGGCAGCAAATGATATCCTGGATT
ACAAGGATGACGACGATAAGGTTTAA

Protein Sequence: >RC228580 representing NM_001164116
Red=Cloning site Green=Tags(s)

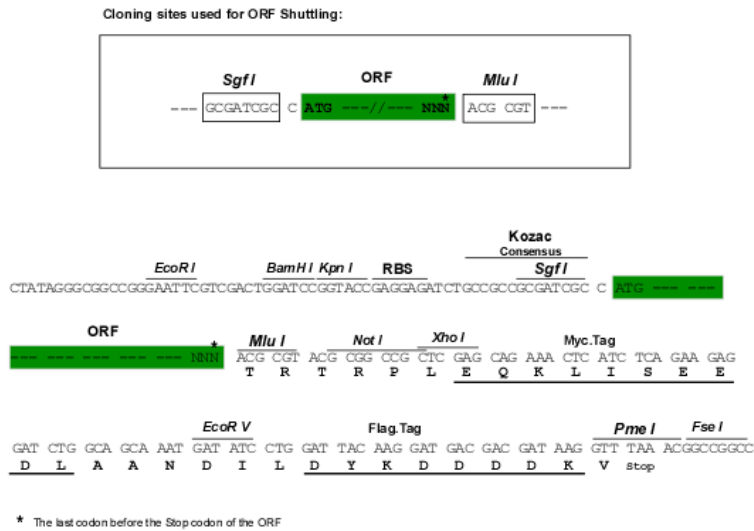
MKGTGIMDCAPKALLARALYDNCPCDSELAFSRGLDITILEQHVPESEGWWKCLLHGRQGLAPANRLQI
LTEVAADRPCPPFLRGLLEAPASSEETYQVPTLPRPPTPGPVYEQMRSWAEGQPPTAQVYEFDPPTSA
RIICEKTL SFPKQAILTLPRPVASLPTLPSQVYDVPTQHRGPVVLKEPEKQQLYDIPASPKKAGLHPPD
SQASGQGVPLISVTTLRRGGYSTLPNPQKSEWIYDTPVSPGKASVRNTPLTSFAEESRPHALPSSSSTFY
NPPSGRSRSLTPQLNNNVPMQKLSLPEIPSYGFLVPRGTFPLDEDVSYKVPSSFLIPRVEQQNTKPNY
DIPKATSSVSQAGKELEKAKEVSENSAGHNSSWFRRRTTSPSPEPDRLSGSSSDSRASIVSSCSTTSTDD
SSSSSSEESAKELSLDLVAKETVMALQHKVSVSVAGLMLFVSRKWRFRDYLEANIDAIHRSTDHIEESV
REFLDFARGVHGTACNL TDSNLQNRIRDQMOTISNSYRILLETKESLDNRNWPLEVLTDSVQNSPDDLE
RFVMVARMLPEDIKRFASIVIANGRLLFKRNCEKEETVQLTPNAEFKCEKYIQPPQRETESHQKSTPSTK
QREDEHSSELLKKNRANICGQNPGLIPQPSSQTPERKPRLSEHCRLYFGALFKAISAFHGSLSSSQPA
EIIITQSKLVIMVGQKLVDTLCMETQERDVRNEILRGSSHLCSLLKDVALATKNAVLTYPSAALGHLQAE
AEKLEQHTRQFRGTLG

TRTRPLEQKLISEEDLAANDILDYKDDDDKV

Chromatograms: https://cdn.origene.com/chromatograms/mk8038_f01.zip

Restriction Sites: Sgfl-Mlul

Cloning Scheme:



ACCN: NM_001164116

ORF Size: 2358 bp

OTI Disclaimer: The molecular sequence of this clone aligns with the gene accession number as a point of reference only. However, individual transcript sequences of the same gene can differ through naturally occurring variations (e.g. polymorphisms), each with its own valid existence. This clone is substantially in agreement with the reference, but a complete review of all prevailing variants is recommended prior to use. [More info](#)

OTI Annotation: This clone was engineered to express the complete ORF with an expression tag. Expression varies depending on the nature of the gene.

Components: The ORF clone is ion-exchange column purified and shipped in a 2D barcoded Matrix tube containing 10ug of transfection-ready, dried plasmid DNA (reconstitute with 100 ul of water).

Reconstitution Method:

1. Centrifuge at 5,000xg for 5min.
2. Carefully open the tube and add 100ul of sterile water to dissolve the DNA.
3. Close the tube and incubate for 10 minutes at room temperature.
4. Briefly vortex the tube and then do a quick spin (less than 5000xg) to concentrate the liquid at the bottom.
5. Store the suspended plasmid at -20°C. The DNA is stable for at least one year from date of shipping when stored at -20°C.

RefSeq: [NM_001164116.2](#)

RefSeq ORF: 2361 bp

Locus ID: 57091

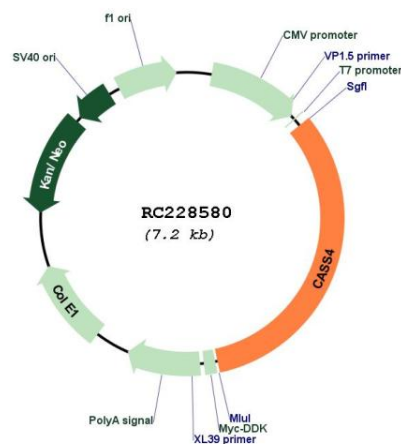
UniProt ID: [Q9NQ75](#)

Cytogenetics: 20q13.31

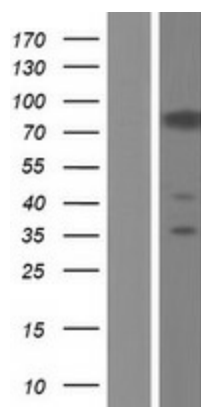
MW: 87 kDa

Gene Summary: Docking protein that plays a role in tyrosine kinase-based signaling related to cell adhesion and cell spreading. Regulates PTK2/FAK1 activity, focal adhesion integrity, and cell spreading. [UniProtKB/Swiss-Prot Function]

Product images:



Circular map for RC228580



Western blot validation of overexpression lysate (Cat# [LY431608]) using anti-DDK antibody (Cat# [TA50011-100]). Left: Cell lysates from untransfected HEK293T cells; Right: Cell lysates from HEK293T cells transfected with RC228580 using transfection reagent MegaTran 2.0 (Cat# [TT210002]).