

Product datasheet for **RC228573**

DISC1 (NM_001164539) Human Tagged ORF Clone

Product data:

Product Type:	Expression Plasmids
Product Name:	DISC1 (NM_001164539) Human Tagged ORF Clone
Tag:	Myc-DDK
Symbol:	DISC1
Synonyms:	C1orf136; SCZD9
Mammalian Cell Selection:	Neomycin
Vector:	pCMV6-Entry (PS100001)
E. coli Selection:	Kanamycin (25 ug/mL)



[View online »](#)

ORF Nucleotide
Sequence:

>RC228573 representing NM_001164539
Red=Cloning site Blue=ORF Green=Tags(s)

TTTTGTAATACGACTCACTATAGGGCGGCCGGGAATTCGTCGACTGGATCCGGTACCGAGGAGATCTGCC
GCC**CGGATCGCC**

ATGCCAGGCGGGGTCTCAGGGCGCCACGCCCGCCGGCGGGCGGCGGTGAGCCACCGCGCAGGCA
GCCGGGATTGCTTACCACCTGCAGCGTGCCTTCGGAGGCGCGGCTGGCACGGAGGCCGGCTACATGAG
AAGCTCGACAGGGCCTGGGATCGGGTCTTTCCCCAGCAGTGGGCACACTGTTCCGGTCCAGGAGGG
GTGTCTGGCGAGGAGTCCACCCTCGGAGTCCAGGGCCAGACAGTGTGGCCTTGACTCGAGAGGCCTCT
TGGTCCGGAGCCCTGTTTCCAAGAGTGCAGCAGCCCTACTGTGACCTCTGTGAGAGGAACCTCGGCGCA
CTTTGGGATTCAGCTCAGAGGTGGCACCAGATTGCCTGACAGGCTTAGCTGGCCGTGTGGCCCTGGGAGT
GCTGGGTGGCAGCAAGAGTTTGCAGCCATGGATAGTTCTGAGACCCTGGACGCCAGCTGGGAGGCAGCCT
GCAGCGATGGAGCAAGGCGTGTCCGGGCAGCAGGCTCTCTGCCATCAGCAGAGTTGAGTAGCAACAGCTG
CAGCCCTGGCTGTGGCCCTGAGGTCCCCCAACCCTCCTGGCTCTCACAGTGCCTTTACCTCAAGCTTT
AGCTTTATTTCGGCTCTCGCTTGGCTCTGCCGGGAACGTGGAGAAGCAGAAGGCTGCCACCATCCAGAG
AGGCTGAGTCCCATTGCCAGAGCCCCAGGAGATGGGAGCCAAAGCTGCCAGCTTGACGGGCTCACGA
GGACCCGCGATGTCTCTCGGCCCTTCACTCTTGGCTACACGGGTCTCTGCAGACTTGCCCAAGGCC
GCAAGGAACAGCTCCAGGCCAGAGCGTGACATGCATTCTTACCAGACATGGACCCTGGCTCCTCCAGTT
CTCTGGATCCCTCACTGGCTGGCTGTGGTGGTGTGGGAGCAGCGGCTCAGGGGATGCCACTCTTGGGA
CACCCTGCTCAGGAAATGGGAGCCAGTGTGCGGGACTGCCTGCTGAGAAACCGGAGGCAGATGGAGGTA
ATATCCTAAGATTAACAACTTACAGAACTTACAGAAAGTGCAGTTGAGAATGATGATTATGATAAAGCTG
AGACGTTACAACAAGATTAGAAGACTTGAACAAGAGAAAATCAGCCTGCACCTTCAACTTCTTCAAG
GCAGCCAGCTCTTAGCAGTTTCTGGGTACCTGGCAGCACAAAGTCCAGGCTGCCTTGCAGCGTGGGGCC
ACTCAGCAGGCCAGCGGAGATGACACCCACACCCCACTGAGAATGGAGCCGAGGCTGTTGGAACCCACTG
CTCAGGACAGCTTGCACGTGTCCATCACGAGACGAGACTGGCTTCTTACAGAAAAGCAGCAGCTACAGAA
AGAAATCGAAGCTCTCCAAGCAAGGATGTTTGTGCTGGAAGCCAAAGATCAACAGCTGAGAAGGGAAATA
GAGGAGCAAGAGCAGCAACTCCAGTGGCAGGGCTGCGACCTGACCCCACTGGTGGCCAGCTGTCCCTGG
GTCAGCTGCAGGAGGTGAGCAAGGCTTGCAGGACACCCTGGCCTCAGCCGGTCAAGTCCCTTCCATGC
AGAGCCACCGAAACCATAAGGAGCCTCCAGGAAAGAATAAAATCCCTCAACTTGTCACTTAAAGAAATC
ACTACTAAGGTGTGTATGAGTGAGAAATCTGCAGCACCTGAGGAAGAAAGTTAACGATATTGAAACCC
AACTACCAGCCTTGCTTGAAGCCAAAATGCATGCCATATCAGGAAACCATTTCTGGACGGCTAAAGACCT
CACCGAGGAGATTAGATCATTAAACATCAGAGAGAGAAGGGCTGGAGGGACTCCTCAGCAAGCTGTTGGTG
TTGAGTTCAGGAATGTCAAAAAGCTGGGAAGTGTAAAGAAGATTACAACAGACTGAGAAGAGAAGTGG
AGCACCAGGAGACTGCCTATGATGGAGTCTCACTCTGTGCCCCAGTCTGGAGTGCAGTGGTACGATCTTG
CTCACTGCAACCTCTGCCTCCCGAGTCAAGCAATTCCTGCCTCAGCCTCCGGAGTAGCTGGGATTAC
AGGTGCCCGCCACCATGCCTGGCTAATTTTGTATTCTTAGTAGAGATGGGGTTTTACCATGTTGACCAGA
CTGGTCTAAAACCTCCTGACCTCAAGTGATCCACCTTCTCAGCCTCCCAAAGTGTGGGATTACAGACAT
GAGCCACTGTGCCTGGCCCTACAA

ACGCGTACGCGGCCGCTCGAGCAGAAACTCATCTCAGAAGAGGATCTGGCAGCAAATGATATCCTGGATT
ACAAGGATGACGACGATAAGGTTTAA

Protein Sequence: >RC228573 representing NM_001164539
 Red=Cloning site Green=Tags(s)

MPGGGPQGAPAAAGGGGVSHRAGSRDCLPPAACFRRRRLARRPGYMRSSSTGPGIGFLSPAVGTLFRFPGG
 VSGEESHSESRARQCGLDSRGLLVRSVSKSAAAPT VTSVRGTAHFGIQLRGGTRLPDRLSWPCGPGS
 AGWQQEF AAMDSSSETLDASWEAACSDGARRVRAAGSLPSAELSSNSCSPGCGPEVPPTPPGSHSAFTSSF
 SFIRLSLGSAGERGEAEGCPPSREAESHQSPQEMGAKAASLDGPHEDPRCLSRPF SLLATRVSADLAQA
 ARNSSRPERDMHSLPDMDPGSSSLDPSLAGCGGDGSSGSDAHSWDTLLRKWEPVLRDCLLRNRQMEV
 ISLRKLKQLQEDAVENDDYDKAETLQQRLEDLEQEKISLHFQLPSRQPALSSFLGHLAAQVQAALRRGA
 TQQASGDDTHTPLRMEPRLLEPTAQDSLHVSITRRDWLLQEKKQLQKEIEALQARMFVLEAKDQQLRREI
 EEQEQLQWQGC DLTPLVGQLSLGQLQEVSKALQDTLASAGQIPFHAEPPE TIRSLQERIKSLNLSLKEI
 TTKVCMSEKFCSTLRKKVNDIETQLPALLEAKMHAISGNHFWTAKDL TEEIRSLT SEREGLEGLLSKLLV
 LSSRNVKLGSVKEDYNRLRREVEHQETAYDGVSLCRPVSAVVRSCSLQPLPPEFKQFSCLSLRSSWDY
 RCPPPCLANFVFLVEMGFYHVDQTGLKLLTSSDPPSSASQSAGITDMSHCAWPLQ

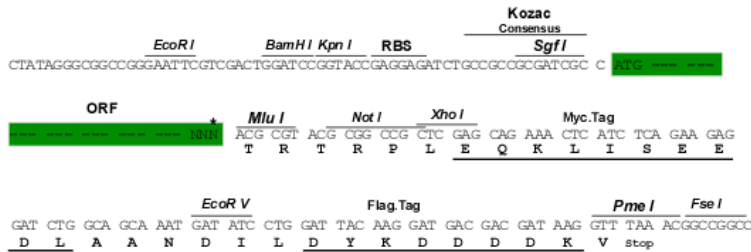
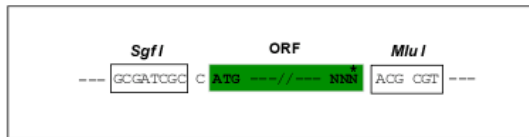
TRTRPLEQKLI SEEDLAANDILDYKDDDDKV

Restriction Sites:

SgfI-MluI

Cloning Scheme:

Cloning sites used for ORF Shuttling:



* The last codon before the Stop codon of the ORF

ACCN: NM_001164539

ORF Size: 2265 bp

OTI Disclaimer: The molecular sequence of this clone aligns with the gene accession number as a point of reference only. However, individual transcript sequences of the same gene can differ through naturally occurring variations (e.g. polymorphisms), each with its own valid existence. This clone is substantially in agreement with the reference, but a complete review of all prevailing variants is recommended prior to use. [More info](#)

OTI Annotation: This clone was engineered to express the complete ORF with an expression tag. Expression varies depending on the nature of the gene.

Components: The ORF clone is ion-exchange column purified and shipped in a 2D barcoded Matrix tube containing 10ug of transfection-ready, dried plasmid DNA (reconstitute with 100 ul of water).

Reconstitution Method:

1. Centrifuge at 5,000xg for 5min.
2. Carefully open the tube and add 100ul of sterile water to dissolve the DNA.
3. Close the tube and incubate for 10 minutes at room temperature.
4. Briefly vortex the tube and then do a quick spin (less than 5000xg) to concentrate the liquid at the bottom.
5. Store the suspended plasmid at -20°C. The DNA is stable for at least one year from date of shipping when stored at -20°C.

RefSeq: [NM_001164539.2](#)

RefSeq ORF: 2268 bp

Locus ID: 27185

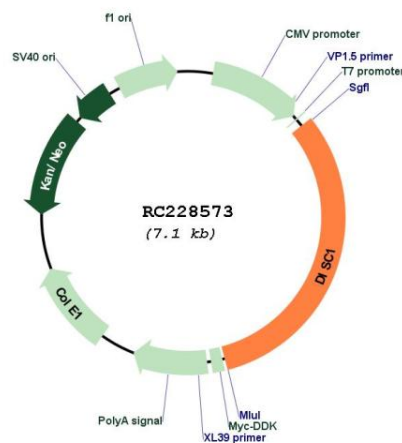
UniProt ID: [Q9NRI5](#)

Cytogenetics: 1q42.2

MW: 82.1 kDa

Gene Summary: This gene encodes a protein with multiple coiled coil motifs which is located in the nucleus, cytoplasm and mitochondria. The protein is involved in neurite outgrowth and cortical development through its interaction with other proteins. This gene is disrupted in a t(1;11) (q42.1;q14.3) translocation which segregates with schizophrenia and related psychiatric disorders in a large Scottish family. Alternate transcriptional splice variants, encoding different isoforms, have been characterized. [provided by RefSeq, Jul 2008]

Product images:



Circular map for RC228573