

Product datasheet for **RC228568**

ADAM8 (NM_001164489) Human Tagged ORF Clone

Product data:

Product Type:	Expression Plasmids
Product Name:	ADAM8 (NM_001164489) Human Tagged ORF Clone
Tag:	Myc-DDK
Symbol:	ADAM8
Synonyms:	CD156; CD156a; MS2
Mammalian Cell Selection:	Neomycin
Vector:	pCMV6-Entry (PS100001)
E. coli Selection:	Kanamycin (25 ug/mL)



[View online »](#)

ORF Nucleotide Sequence:

>RC228568 representing NM_001164489
 Red=Cloning site Blue=ORF Green=Tags(s)

TTTTGTAATACGACTCACTATAGGGCGGCCGGAATTCGTCGACTGGATCCGGTACCGAGGAGATCTGCC
 GCC**GCGATCGCC**

ATGCGCGCCTCGGGCTCTGGCTGCTGGGCGCATGATGTGCCTGCGATTGCCCCAGCCGGCCCTGGG
 CCCTCATGGAGCAGTATGAGGTCGTGTTGCCGTGGCGTCTGCCAGGCCCCGAGTCCGCCGAGCTCTGCC
 CTCCCCTTGGGCTGCACCCAGAGAGGGTGAGCTACGTCCTTGGGGCCACAGGGCACAACCTCACCCCTC
 CACCTGCGGAAGAACAGGGACCTGCTGGGCTCCGGCTACACAGAGACCTATACGGCTGCCAATGGCTCCG
 AGGTGACGGAGCAGCCTCGCGGGCAGGACCCTGCTTCTACCAGGGCCACGTAGAGGGGTACCCGGACTC
 AGCCGCCAGCCTCAGCACCTGTGCCGGCTCAGGGTTTCTTCCAGGTGGGGTACAGCTGCACCTGATC
 GAGCCCTGGATGAAGGTGGCGAGGGCGGACGGCACGCCGTGTACCAGGTGAGCACCTGCTGCAGACGG
 CCGGGACCTCGGGGTGACGACGACAGCCTGGGACGCCCTCTGGGACCCCGGACGGCAGCCGTCTTCAG
 GCCTCGGCCCGGGGACTCTCTGCCATCCCGAGAGACCCGCTACGTGGAGCTGTATGTGGTCTGGACAAT
 GCAGAGTTCAGATGCTGGGGAGCGAAGCAGCCGTGCGTTCATCGGGTGTGGAGGTGGTGAATCAGTGG
 ACAAGCTATATCAGAACTCAACTTCCGTGTGGTCTGTTGGGCTGGAGATTTGGAATAGTCAGGACAG
 GTTCCAGTACAGCCCGACCCAGTGTACACTGGAGAACCTCCTGACCTGGCAGGCACGGCAACGGACA
 CGGCGGCACCTGCATGACAACGTACAGCTATCACGGGTGTGACTTACCCGGGACTACCGTGGGGTTTG
 CCAGGGTGTCCGCCATGTGCTCCACAGCTCAGGGGCTGTGAACCAGGACCACAGCAAGAACCCCGTGGG
 CGTGGCCTGTACCATGGCCATGAGATGGGCCACAACCTGGGCATGGACCATGATGAGAAGTCCAGGGC
 TGCCGCTGCCAGGAACGCTTCGAGGCCGGCCGCTGCATCATGGCGGCAGCATTGGCTCCAGTTTCCCA
 GGATGTTTCACTGACTGCAGCCAGCCCTACCTGGAGAGCTTTTTGGAGCGGCCGAGTGGTGTGCCCTCC
 CAACGCCCTGACCTCAGCCACCTGGTGGCGGCCCGCCGTTGTGGGAACCTGTTTGTGGAGCGTGGGGAG
 CAGTGCAGTGCAGCCCGCCCGAGGACTGCCGGAACCGTGTGCAACTCTACCCTGCCAGTGGCTG
 AGGGGGCCAGTGTGCGCACGTAACCTGCTGCCAGGAGTCAAGGTGAAGCCGGTGGTGGAGTGTGCCG
 TCCCAAGAAGGACATGTGTGACCTCGAGGAGTTCTGTGACGGCCGGCACCCCTGAGTGCCCGAAGACGCC
 TTCCAGGAGAACGGCAGCCCTGCTCCGGGGGCTACTGCTACAACGGGGCTGTCCACACTGGCCAGC
 AGTGCCAGGCCTTCTGGGGGCCAGGTGGCAGGCTGCCGAGGAGTCTGCTTCTCCTATGACATCCTACC
 AGGCTGCAAGGCCAGCCGTACAGGGCTGACATGTGTGGCGTTCTGCAGTCAAGGGTGGCAGCAGCCC
 CTGGGGCTGCCATCTGCATCGTGGATGTGTGCCACGCGCTCACACAGAGGATGGCACTGCGTATGAAC
 CAGTGCCCGAGGGCACCCGGTGTGGACCAGAGAAGTTTGTGGAAGGACGTTGCCAGGACTTACACGT
 TTACAGATCCAGCAACTGCTCTGCCAGTGCCACAACCATGGGGTGTGCAACCACAAGCAGGAGTGGCAC
 TGCCACGCGGGCTGGGCCCGCCCACTGCGCGAAGCTGCTGACTGAGGTGCACGCAAGGCTGCCAGCCGC
 GTGCCGGCAAGGGCGGGCTCCAGCCCATCCAGGGGCCCAAGAGCTGGTCCCACCCACCCCGG
 GCCAGCCCGCCGACACCCGGCTCCTCGGTGGCTCTGAAGAGGCCGCCCCCTGCTCCTCCGGTCACTGT
 GTCCAGCCACCCTTCCAGTTCCTGTCTACCCCGGCAGGCACCAAGCAGGTCAAGCCAACGTTCC
 GCACCCCACTGCCCGAGTCAAACCCGGGGCTGGTGGGCCAACCTGGTCCAGC

ACGCGTACGCGGCCGCTCGAGCAGAACTCATCTCAGAAGAGGATCTGGCAGCAAATGATATCCTGGATT
 ACAAGGATGACGACGATAAGGTTTAA

Protein Sequence: >RC228568 representing NM_001164489
Red=Cloning site Green=Tags(s)

```
MRGLGLWLLGAMMLPAIAPSRPWALMEQYEVVLPWRLPGPRVRRALPSHLGLHPERVSYVLGATGHNFTL
HLRKNRDLGSGYTETYAANGSEVTEQPRGDHCFYQGHVEGYPDASAASLSTCAGLRGFFQVGSDLHLI
EPLDEGGEGGRHAVYQAEHLLQTAGTCGVSDDSLGLGPRTAAVFRPRPGDSLPSRETRYVELYVVVDN
AEFQMLGSEAAVRHRVLEVVNHVDKLYQKLNFRVVLVGLIWNQDRFHVSPDPSVTLENLLTWQARQRT
RRHLHDNVQLITGVDFGTGTVGFARVSAMCSHSSGAVNQDHSKNPVGVACTMAHEMGNLGMHDENVQG
CRCQERFEAGRCIMAGSIGSSFPRMFSDCSQAYLESFLERPQSVCLANAPDLSHLVGGPVCGNLFFVERGE
QCDCGPPEDCRNRCCNSTTCQLAEGAQCAHGTCCQCEKVKPAGELCRPKKDMCDLEEFCDGRHPECPEDA
FQENGTPCSGGYCYNGACPTLAQQCAFWPGGQAAEESCFSYDILPGCKASRYRADMCGLVCKGGQQP
LGRAICIVDVCHALTTEDGTAYEPVPEGTRCGPEKVCWKGRCDLHVYRSSNCSAQCHNHGVCNHNKQECH
CHAGWAPPHCAKLLTEVHAGCQPRAGQGRGSSPIQGPPRAGPHHPPGPARPTPGLLGGSEEAAPCSSGHC
VQPTLPSCLHPAGTKAGHQANVRTPSAPSQTRGWCQPWSS
```

TRTRPLEQKLISEEDLANDILDYKDDDDKV

Chromatograms: https://cdn.origene.com/chromatograms/mk8007_a09.zip

Restriction Sites: SgfI-MluI

Cloning Scheme:

Cloning sites used for ORF Shuttling:



* The last codon before the Stop codon of the ORF

ACCN: NM_001164489

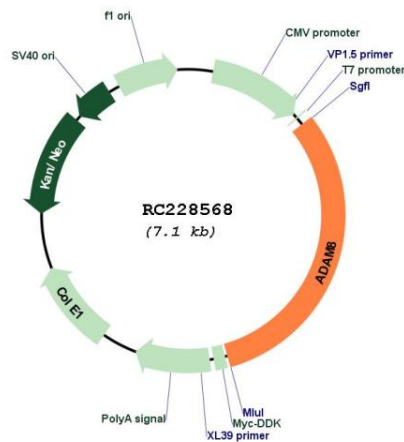
ORF Size: 2226 bp

OTI Disclaimer: The molecular sequence of this clone aligns with the gene accession number as a point of reference only. However, individual transcript sequences of the same gene can differ through naturally occurring variations (e.g. polymorphisms), each with its own valid existence. This clone is substantially in agreement with the reference, but a complete review of all prevailing variants is recommended prior to use. [More info](#)

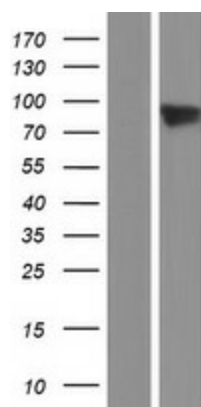
OTI Annotation: This clone was engineered to express the complete ORF with an expression tag. Expression varies depending on the nature of the gene.

Components:	The ORF clone is ion-exchange column purified and shipped in a 2D barcoded Matrix tube containing 10ug of transfection-ready, dried plasmid DNA (reconstitute with 100 ul of water).
Reconstitution Method:	<ol style="list-style-type: none"> 1. Centrifuge at 5,000xg for 5min. 2. Carefully open the tube and add 100ul of sterile water to dissolve the DNA. 3. Close the tube and incubate for 10 minutes at room temperature. 4. Briefly vortex the tube and then do a quick spin (less than 5000xg) to concentrate the liquid at the bottom. 5. Store the suspended plasmid at -20°C. The DNA is stable for at least one year from date of shipping when stored at -20°C.
RefSeq:	<u>NM_001164489.2</u>
RefSeq ORF:	2229 bp
Locus ID:	101
UniProt ID:	<u>P78325</u>
Cytogenetics:	10q26.3
Protein Families:	Druggable Genome, Transmembrane
MW:	80.1 kDa
Gene Summary:	This gene encodes a member of the ADAM (a disintegrin and metalloprotease domain) family. Members of this family are membrane-anchored proteins structurally related to snake venom disintegrins, and have been implicated in a variety of biological processes involving cell-cell and cell-matrix interactions, including fertilization, muscle development, and neurogenesis. The protein encoded by this gene may be involved in cell adhesion during neurodegeneration, and it is thought to be a target for allergic respiratory diseases, including asthma. Alternative splicing results in multiple transcript variants. [provided by RefSeq, Aug 2009]

Product images:



Circular map for RC228568



Western blot validation of overexpression lysate (Cat# [LY431596]) using anti-DDK antibody (Cat# [TA50011-100]). Left: Cell lysates from untransfected HEK293T cells; Right: Cell lysates from HEK293T cells transfected with RC228568 using transfection reagent MegaTran 2.0 (Cat# [TT210002]).