

Product datasheet for **RC228557**

ZC3H14 (NM_001160104) Human Tagged ORF Clone

Product data:

Product Type:	Expression Plasmids
Product Name:	ZC3H14 (NM_001160104) Human Tagged ORF Clone
Tag:	Myc-DDK
Symbol:	ZC3H14
Synonyms:	MRT56; MSUT-2; NY-REN-37; SUT2; UKp68
Mammalian Cell Selection:	Neomycin
Vector:	pCMV6-Entry (PS100001)
E. coli Selection:	Kanamycin (25 ug/mL)



[View online »](#)

**ORF Nucleotide
Sequence:**

>RC228557 representing NM_001160104
 Red=Cloning site Blue=ORF Green=Tags(s)

TTTTGTAATACGACTCACTATAGGGCGGCCGGGAATTCGTCGACTGGATCCGGTACCGAGGAGATCTGCC
 GCC**CGGATCGCC**

ATGGAGATCGGCACCGAGATCAGCCGAAGATCCGGAGTGCCATTAAGGGGAAATTACAAGAATTAGGAG
 CTTATGTTGATGAAGAACTTCTGATTACATTATGGTGATGGTGGCCAACAAGAAAAGTCAGGACCAAAT
 GACAGAGGATCTGTCCCTGTTTCTAGGGAAACAACAATTCGATTCACCGTATGGCTTCATGGTGTATTA
 GATAAACTTCGCTCTGTTACAACGAACCTCTAGTCTGAAGTCTTCTGATACCAACATCTTTGATAGTA
 ACGTGCCTTCAAACAAGAGCAATTTTCAGTCGGGGAGATGAGAGGAGGCATGAAGCTGCAGTGCCACCACT
 TGCCATTCCTAGCGCGAGACCTGAAAAAGAGATTCCAGAGTTTCTACAAGTTCGCAGGAGTCAAAAACC
 ACAAATGTCAGACAGACTTACGATGATGGAGCTGCAACCCGACTAATGTCAACAGTGAAACCTTTGAGGG
 AGCCAGCACCCCTCTGAAGATGTGATTGATTAAGCCAGAACCAGATGATCTCATTGACGAAGACCTCAA
 CTTTGTGCAGGAGAATCCCTTATCTCAGAAAAACCTACAGTGACACTTACATATGGTTCCTCTCGCCCT
 TCTATTGAAATTTATCGACCACCTGCAAGTAGAAATGCAGATAGTGGTGTTCATTTAAACAGGTTGCAAT
 TTCAACAGCAGCAGAATAGTATTCATGCTGCCAAGCAGCTTGATATGCAGAGTAGTTGGGTATATGAAAC
 AGGACGTTTGTGTGAACCAGAGGTGCTTAACAGCTTAGAAGAAACGTATAGTCCGTTCTTTGAAACAAC
 TCGGAGAAAAATGAGTATGGAGGATGAAAACCTTCGGAAGAGAAAGTTGCCTGTGGTAAGTTCAAGTTGTTA
 AAGTAAAAAATCAATCATGATGGAGAAGAGGAGGAAGAAGATGATGATTACGGGTCTCGAACAGGAAG
 CATCTCCAGCAGTGTGTCTGTGCCTGCAAAGCCTGAAAGGAGACCTTCTCTTCCACCTTCTAAACAAGCT
 AACAAGAATCTGATTTTGAAGGCTATATCTGAAGCTCAAGAATCCGTAACAAAAACAACCTAACTACTCTA
 CAGTTCCACAGAAACAGACACTTCCAGTTGCTCCAGAACTCGAACTTCTCAAGAAGAATTGCTAGCAGA
 AGTGGTCCAGGGACAAAGTAGGACCCCAAGAAATAGTCCCCCATTAAGAAGAGGAAACAAAAGGAGAT
 TCTGTAGAAAAAATCAAGGAACTCAACAGAGGCAATTATTATCCCGACTGCAAAATCGACCCAGTAAATGG
 CAGAAACTCTGCAGATGAGTCAAGATTACTATGACATGGAATCCATGGTCCATGCAGACACAAGATCATT
 TATTCTGAAGAAGCCAAAGCTGTCTGAGGAAGTAGTAGTGGACCAAAACCAAGAGTCGGGGATGAAGACT
 GCAGATTCCTTCGGGTACTTTCAGGACACCTTATGCAGACACGAGATCTTGTACAACAGATAAACCTG
 CAAGTCCCAAGTTTATAGTGACGCTGGATGGTGTCCCCAGCCCCCAGGATACATGTCAGATCAAGAGGA
 GGACATGTGCTTTGAAGGAATGAAACCCGTAACCAAACTGCAGCCTCAAACAAGGGACTCAGAGGTCTC
 CTCACCCACAGCAGTTGCACTTGTGAGCAGGCAGCTTGAAGACCCAAATGCTGAGATGAGTGAAGTGA
 GTGTGGCACAGAAACCAGAAAAACTTTTGGAGCGCTGCAAGTACTGGCCTGCTTGTAAAAATGGGGATGA
 GTGTGCCTACCATCACCCATCTCACCTGCAAAGCCTTCCCAATTGTAATTTGCTGAAAAATGTTTG
 TTTGTTACCCAAATGTAATATGATGCAAAGTGTACTAAACCAGATTGTCCTTCACTCATGTGAGTA
 GAAGAATCCAGTACTGTCTCCAAAACAGTTGCACCACCAGCACCTTCCAGTAGTCAGCTCTGCCG
 TTACTTCCTGCTTGAAGAAGTGAATGTCCCTTCTATCATCCAAAACATTGTAGGTTAACACTCAA
 TGTACAAGACCGGACTGCACATTCTACCATCCACCATTAATGTCCACCACGACATGCCTTGAATGGA
 TTCGACCTCAAACCAGCGAA

ACGCGTACGCGGCCGCTCGAGCAGAACTCATCTCAGAAGAGGATCTGGCAGCAAATGATATCCTGGATT
 ACAAGGATGACGACGATAAGGTTTAA

Protein Sequence: >RC228557 representing NM_001160104
Red=Cloning site Green=Tags(s)

```
MEIGTEISRKIRSAIKGKLQELGAYVDEELPDYIMVMVANKKSQDQMTEDLSLFLGNNTIRFTVWLHGVL
DKLRSVTTEPSSLKSSDTNIFDSNVPSNKSNSFRGDERRHEAAVPLAIP SARPEKRDSRVSTSSQESKT
TNVRQTYDDGAATRLMSTVKPLREPAPSEVDIDIKPEPDDLIDEDLNFVQENPLSQKKPTVTLTYGSSRP
SIEIYRPPASRNADSGVHLNRLQFQQQNSIHAAKQLDMQSSWVYETGRLCEPEVLNSLEETYSPFFRNN
SEKMSMEDENFRKRKLPVVSSVVKVKKFNHDGEEEEEDDDYGSRTGSISSVSVPAPKERRPSLPPSKQA
NKNLILKAISEAQESVTKTTNYSTVPQKQTLPVAPRTRTSQEELLAEVVQGQSRTPRISPPIKEEETKGD
SVEKNQGTQQRQLL SRLQIDPVMAETLQMSQDYDMESMVHADTRSFILKKPKLSEEVVAPNQESGMKT
ADSLRVL SGHLMQTRDLVQDPKPASP KFIVTLDGVPSPPGYMSDQEEDMCFEGMKPVNQTAASNKGLRGL
LHPQQLHLLSRQLEDPAEMSEL SVAQKPEKLLERCKYWPACKNGDECAHYHPI SPCKAFPNC KFAEKCL
FVHPNCKYDAKCTKPD CPFTHVSRRI PVLSPKPVAPPAPPSSSQLCRYFPACKKMECPFYHPKHCRFNTQ
CTRPDCTFYHPTINVPPRHALKWIRPQTSE
```

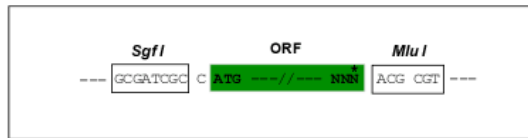
TRTRPLEQKLISEEDLAANDILDYKDDDDKV

Chromatograms: https://cdn.origene.com/chromatograms/mk8038_e05.zip

Restriction Sites: SgfI-MluI

Cloning Scheme:

Cloning sites used for ORF Shuttling:



* The last codon before the Stop codon of the ORF

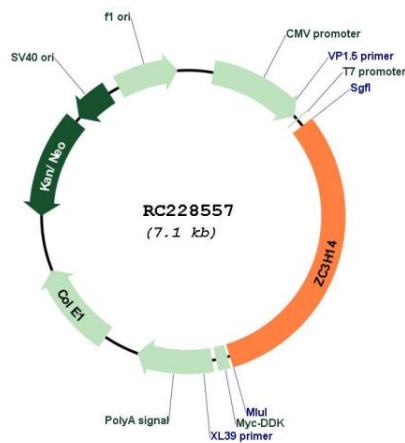
ACCN: NM_001160104

ORF Size: 2190 bp

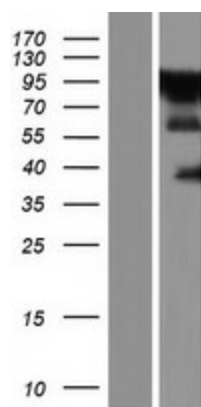
OTI Disclaimer: The molecular sequence of this clone aligns with the gene accession number as a point of reference only. However, individual transcript sequences of the same gene can differ through naturally occurring variations (e.g. polymorphisms), each with its own valid existence. This clone is substantially in agreement with the reference, but a complete review of all prevailing variants is recommended prior to use. [More info](#)

OTI Annotation: This clone was engineered to express the complete ORF with an expression tag. Expression varies depending on the nature of the gene.

Components:	The ORF clone is ion-exchange column purified and shipped in a 2D barcoded Matrix tube containing 10ug of transfection-ready, dried plasmid DNA (reconstitute with 100 ul of water).
Reconstitution Method:	<ol style="list-style-type: none"> 1. Centrifuge at 5,000xg for 5min. 2. Carefully open the tube and add 100ul of sterile water to dissolve the DNA. 3. Close the tube and incubate for 10 minutes at room temperature. 4. Briefly vortex the tube and then do a quick spin (less than 5000xg) to concentrate the liquid at the bottom. 5. Store the suspended plasmid at -20°C. The DNA is stable for at least one year from date of shipping when stored at -20°C.
RefSeq:	<u>NM_001160104.2</u>
RefSeq ORF:	2193 bp
Locus ID:	79882
UniProt ID:	<u>Q6PJT7</u>
Cytogenetics:	14q31.3
MW:	82.1 kDa
Gene Summary:	The protein encoded by this gene is a poly(A)-binding protein that can affect gene expression and poly(A) tail length. The encoded protein may influence mRNA stability, nuclear export, and translation. [provided by RefSeq, May 2016]

Product images:


Circular map for RC228557



Western blot validation of overexpression lysate (Cat# [LY431585]) using anti-DDK antibody (Cat# [TA50011-100]). Left: Cell lysates from untransfected HEK293T cells; Right: Cell lysates from HEK293T cells transfected with RC228557 using transfection reagent MegaTran 2.0 (Cat# [TT210002]).