

Product datasheet for **RC228535**

Myocardin (MYOCD) (NM_001146313) Human Tagged ORF Clone

Product data:

Product Type:	Expression Plasmids
Product Name:	Myocardin (MYOCD) (NM_001146313) Human Tagged ORF Clone
Tag:	Myc-DDK
Symbol:	Myocardin
Synonyms:	MYCD
Mammalian Cell Selection:	Neomycin
Vector:	pCMV6-Entry (PS100001)
E. coli Selection:	Kanamycin (25 ug/mL)



[View online »](#)

ORF Nucleotide Sequence:

>RC228535 representing NM_001146313
 Red=Cloning site Blue=ORF Green=Tags(s)

TTTTGTAATACGACTCACTATAGGGCGGCCGGAATTCGTCGACTGGATCCGGTACCGAGGAGATCTGCC
 GCC**CGCATCGCC**

ATGAAGCTGAAAAGACCCGACTCGCCGATGATCTCAATGAAAAATTGCTCTACGACCAGGGCCACTGG
 AGCTGGTGAAAAAACATTCTTCTGTGGATTCTGCTGTGAAAGAGGCCATAAAAGGTAACCAGGTGAG
 TTTCTCCAAATCCACGGATGCTTTTGCCTTTGAAGAGGACAGCAGCAGCGATGGGCTTTCTCCGGATCAG
 ACTCGAAGTGAAGACCCCAAACTCAGCGGGATCCCGCCAGACGCTAAAGCCTCAGATACCCCTTCGA
 CAGGTTCTCTGGGGACAAACCAGGATCTTGCTTCTGGCTCAGAAAATGACAGAAATGACTCAGCCTCACA
 GCCCAGCCACCAGTCAGATGCGGGGAAGCAGGGGCTTGGCCCCCAGCACCCCATAGCCGTGCATGCT
 GCTGTAAGTCCAAATCCTTGGGTGACAGTAAGAACCGCCACAAAAGCCCAAGGACCCCAAGCCAAAGG
 TGAAGAAGCTTAAATATCACCAGTACATCCCCCAGACCAGAAGGCAGAGAAGTCCCTCCACCTATGGA
 CTCAGCCTACGCTCGGCTGCTCCAGCAACAGCAGCTGTTCTGCAGCTCCAAATCCTCAGCCAGCAGCAG
 CAGCAGCAGCAACACCGATTAGCTACCTAGGGATGCACCAAGCTCAGCTTAAGGAACCAATGAACAGA
 TGGTCAGAAATCCAACTCTTCTCAACGCCACTGAGCAATACCCCTTGTCTCCTGTCAAAAACAGTTT
 TTCTGGACAACTGGTGTCTCTTCTTCAAACCAGGCCACTCCACCTAACCTGGATGATCTGAAGGTC
 TCTGAATTAAGACAACAGCTTCGAATTCGGGGCTTGCCTGTGTGACGGCACCAAAACGGCTCTCATGGACC
 GGCTTCGACCCCTCCAGGACTGCTCTGGCAACCCAGTGCCGAACCTTGGGGATATAACGACTGTCACTTT
 TCCTGTACACCCAACACGCTGCCCAATTACAGTCTTCTCTTACCAGTGCCTGTCCAACGGCTTC
 TACCCTTTGGCAGCACCAGCTCCAGCCCCCGATCTCCCAGCCTCCTGTGACCTGTGAGTGCCTGGGT
 CCCTGCCGGACACCTTCAATGATGCCTCCCCCTCCTTCGGCCTGCACCCGTCCCAAGTCCAGTGTGCAC
 GGAGGAAAAGTCTCATGAGCAGCCTGAATGGGGCTCTGTTCTTCTGAGCTGGATGGGCTGGACTCCGAG
 AAGGACAAGATGCTGGTGGAGAAGCAGAAGGTGATCAATGAACTCACCTGGAAACTCCAGCAAGAGCAGA
 GGCAGGTGGAGGAGCTGAGGATGCAGTTCAGAAGCAGAAAAGGAATAACTGTTGAGAGAAGAAGCCGCT
 GCCTTTCTGGCTGCCTCCATCAAGCAGGAAGAGGCTGTCTCCAGCTGTCTTTTGCATCCCAAGTACCT
 GTGAAAAGACAAAGCAGCAGCTCAGAGTGTCAACCCAGGCTTGTGAAGTGTCAACTCCAGCCTCTTG
 GAAATGCTCATTGTGGAGTCTCAGATCAAACCAATGACTTTCTTCCACATTTCTCAGCCCCCAGTG
 TTCCCCTCAGCATTACCCGCTGGGGCTGTGAAAAGCCACAGCACATCAGTTTGCCCCATCACCCAAC
 AACCTCACTTTCTGCCCTCATCTCCGGGGCCAGGGAGAAGGGCACAGGTCTCCTCGCCCATCAGCA
 GCCAGGTGTGACTGCACAGAACTCAGGAGCACAGATGGCCATCCTCCAAGCTTCTCTCCCATTCTTC
 CAGCCTCCACCCGCCCTTCTCTGGAGCCCAAGCAGACAGCAGTATGGTGCCGGGGGAAACCTTGTCCC
 AAAAGCCCATGTGTACAGCAAAAGATGGCTGGTTTACTCTTCTGATAAGGTGGGGCCAAAGTTTTCAA
 TTCCATCCCCAATTTTTCTAAGTCAAGTTCAGCAATTCAGAGGTAACACAGCCTCCATCCTATGAAGA
 TGCCGTAAGCAGGTAACCATG

ACGCGTACGCGGGCCGCTCGAGCAGAACTCATCTCAGAAGAGGATCTGGCAGCAATGATATCCTGGATT
 ACAAGGATGACGACGATAAGGTTTAA

Protein Sequence: >RC228535 representing NM_001146313
Red=Cloning site Green=Tags(s)

MKLKRARLADDLNEKIALRPGPLELVEKNILPVDSAVKEAIKGNQVSFSKSTDAFAFEEDSSSDGLSPDQ
 TRSEDPQNSAGSPPDAKASDTPSTGSLGTNQDLASGSENDERNDASQPSHQSDAGKQGLGPPSTPIAVHA
 AVKSKSLGDSKNRHKKPKDPKPKVKLKYHQYIPPDQKAEKSPPMDSAYARLLQQQQLFLQLIILSQQQ
 QQQQHRFSYLGMHQAQLKEPNEQMVRNPNSSSTPLSNTPLSPVKNSFSGQTGVSSFKPGPLPPNLDDLKV
 SELRQQLRIRGLPVSGTKTALMDRLRPFQDCSGNPVVPNFGDITTVTFVPTPNTLPNYQSSSSTALSNGF
 YHFGSTSSSPI SPASSDL SVAGSLPDTFNDASPSFGLHPSPVHVCTEESLMSLNGGSVPSEL DGLDSE
 KDKMLVEKQKVINELTWKLQQEQRQVEELRMQLQKQRNNCSEKPLPFLAASIKQEEAVSSCPFASQVP
 VKRQSSSECHPPACEAAQLQPLGNAHCVESSDQTNVLSSTFLSPQCSPQHSPLGAVKSPQHISLPPSPN
 NPHFLPSSGAQGEHRVSSPISSQVCTAQNSGAHDGHPPSPHSSSLHPPFSGAQADSSHGAGGNPCP
 KSPCVQQKMAGLHSSDKVGPKFSIPSPTFSKSSSAISEVTQPPSYEDAVKQVTM

TRTRPLEQKLI SEEDLAANDILDYKDDDDKV

Chromatograms: https://cdn.origene.com/chromatograms/mk8072_h03.zip

Restriction Sites: Sgfl-MluI

Cloning Scheme:

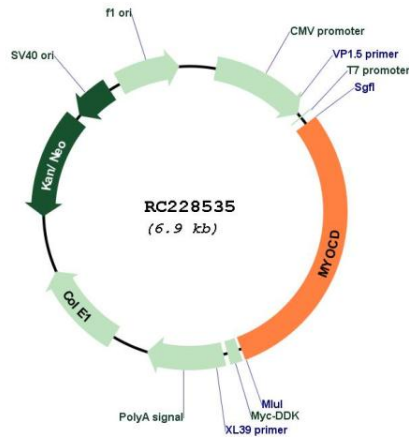


ACCN: NM_001146313

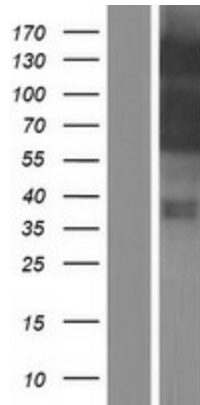
ORF Size: 2052 bp

OTI Disclaimer:	<p>Due to the inherent nature of this plasmid, standard methods to replicate additional amounts of DNA in E. coli are highly likely to result in mutations and/or rearrangements. Therefore, OriGene does not guarantee the capability to replicate this plasmid DNA. Additional amounts of DNA can be purchased from OriGene with batch-specific, full-sequence verification at a reduced cost. Please contact our customer care team at custsupport@origene.com or by calling 301.340.3188 option 3 for pricing and delivery.</p> <p>The molecular sequence of this clone aligns with the gene accession number as a point of reference only. However, individual transcript sequences of the same gene can differ through naturally occurring variations (e.g. polymorphisms), each with its own valid existence. This clone is substantially in agreement with the reference, but a complete review of all prevailing variants is recommended prior to use. More info</p>
OTI Annotation:	This clone was engineered to express the complete ORF with an expression tag. Expression varies depending on the nature of the gene.
Components:	The ORF clone is ion-exchange column purified and shipped in a 2D barcoded Matrix tube containing 10ug of transfection-ready, dried plasmid DNA (reconstitute with 100 ul of water).
Reconstitution Method:	<ol style="list-style-type: none"> 1. Centrifuge at 5,000xg for 5min. 2. Carefully open the tube and add 100ul of sterile water to dissolve the DNA. 3. Close the tube and incubate for 10 minutes at room temperature. 4. Briefly vortex the tube and then do a quick spin (less than 5000xg) to concentrate the liquid at the bottom. 5. Store the suspended plasmid at -20°C. The DNA is stable for at least one year from date of shipping when stored at -20°C.
RefSeq:	NM_001146313.1 , NP_001139785.1
RefSeq ORF:	2054 bp
Locus ID:	93649
Cytogenetics:	17p12
Protein Families:	Transcription Factors
MW:	73 kDa
Gene Summary:	<p>This gene encodes a nuclear protein, which is expressed in heart, aorta, and in smooth muscle cell-containing tissues. It functions as a transcriptional co-activator of serum response factor (SRF) and modulates expression of cardiac and smooth muscle-specific SRF-target genes, and thus may play a crucial role in cardiogenesis and differentiation of the smooth muscle cell lineage. Alternatively spliced transcript variants encoding different isoforms have been found for this gene.[provided by RefSeq, Sep 2009]</p>

Product images:



Circular map for RC228535



Western blot validation of overexpression lysate (Cat# [LY431563]) using anti-DDK antibody (Cat# [TA50011-100]). Left: Cell lysates from untransfected HEK293T cells; Right: Cell lysates from HEK293T cells transfected with RC228535 using transfection reagent MegaTran 2.0 (Cat# [TT210002]).