

Product datasheet for **RC228530**

ARHGAP40 (NM_001164431) Human Tagged ORF Clone

Product data:

Product Type:	Expression Plasmids
Product Name:	ARHGAP40 (NM_001164431) Human Tagged ORF Clone
Tag:	Myc-DDK
Symbol:	ARHGAP40
Synonyms:	C20orf95; dj1100H13.4
Mammalian Cell Selection:	Neomycin
Vector:	pCMV6-Entry (PS100001)
E. coli Selection:	Kanamycin (25 ug/mL)



[View online »](#)

ORF Nucleotide
Sequence:

>RC228530 representing NM_001164431
Red=Cloning site Blue=ORF Green=Tags(s)

TTTTGTAATACGACTCACTATAGGGCGGCCGGGAATTCGTCGACTGGATCCGGTACCGAGGAGATCTGCC
GCCGCGATCGCC

ATGGCCGAGCCTGCCCTCCTCCCGCCGCCAGATGGAGAGGCTGGCCCCAGGGCCCTAGCCTCACCGT
GTCCTCGATCCCGCGGGCCCGCATTGCCAGGCGCTGCGCCAGCGCTGGGCCGACCTGGGCTGCAGCTC
TGGCCCTCCTCAGGCCGAATGGATCAGCTTCCCAAGAAGAATCTCTGCGACTACACCCTGCTGGCTCT
GCTGGCTGTTCCACTGGAGTGGAGAGCTCCAGCATGGATGGCTTTTGGATGGAGGTGGAACAGATCCAAC
AGAGAGATGAGCTGAGGGAAGAGGACAGTGGCGGGAATGAAGGCCAGCTTCCAGAGGGGGAAGCTGAATC
CCAGTGGCTGCAGGACACAGGCCGTGCGGGCTCCTTGGTGGCTGGGCTGGATGGTGATCACCAGGAG
CTCCTGTCCACCCTGACACAGACCCAGGTGGCCGCTGTGTGCCCGCGCTGGACATCTATGCTCGCTCAG
TGCGAAGACAACAAGACACCTGTCAGAGATGTCAGGGATGTCTTTGGGGTCTTCAATTCAGGGAAAAT
GTCGTGAGAGAATGGCGACTCCGGTATGAAGGGGGCCAGCTCAGTTCGGGGCCTTAAGTTTCCTCCA
GCAGCAGAGCCTGGGGGGCTGCAGGAGCAGGCTGGGAGGGAAGAAGCCTTCAACATGGACTCTGCCTACT
CAGAACAAGTGCGGTGCTCCTGCAGAGGAGCAGGCCATCCCGGGGAGGCACCTCTGCCTGGGGCAAGTG
TTCCCTGCCGAAGTTTACCGTCCCCAAAGGCAGACTTGGCGTGACGAGGATAGGAGACTTGTCCCTGCAG
GATATGAGGAAGGTACCTTCTCTGGCCCTCATAGAGCTGACCGCGCTCTGTGACATCCTCGGCTTGACC
TGAAGAGGAGCAAGCGGGGAAGTGAAAGCGGCAGAACTCGCCTCTTTGGTGTGCCCTTGACAGCCT
GCTAGAAGCTGACCACAAAGTCTCCCCAGCACACAGTCCCCTGGTCCCTTCAAGCCCTGCTGTCTGT
TTGGAAAAGAGAGGACTGGACATGGAAGCATTCTCAGGGTCCCGGATCCAGGCCAGGGTCAAGGGGC
TGAACAGAAAAGTGGAGAGAGACTTCTATGCTGGCCTTTTGTAGCTGGGACGAGTTTATCAATGACGC
CTCTGATTTGCTCAAAGGTTTATCCGGAAGCTGCCGACACCTTTGCTCACGGCTGAGTACCTCCCGGCC
TTCGCGTGGTGCTAACATCCCAACCTGAAGCAGCGCTGCAGTTTCTCACCTGCTCATCTCATCC
TCCCAGAACCAACAGAAATGCCTTAAAGGCAGTCTGGAATTCCTCAGGAAGGTGGTGGCCCGGGAACA
GCACAACAAGATGACTCTGAGGAATGTTTCCACCGTGTGGCCCTAACCTCTTCTGCACCAAGGGCGG
CCCCCAAGTCCCCAAAGGCAAGGAGAAGCAGCTGGCAGAAAGGGCAGCCGAGGTGGTGCAGATAATGG
TGCACTACCAGGATCTGCTGTGGACGGTCGCTCTTCTGGTGGCCAGGTGCGAAAAGTGAACGACAG
TAGCAGCAGGCGCCCCAGCTCTGCGACGACGGCTCAAGACTTGGCTGCGGAGGATGCACGCAGACAGG
GACAAGGCGGGGACGGCTCGAGGCGACTCCAAGTGGCAAAGATCCAGGTGGTCTGGCCTATCAAGG
ACCCCTTGAAGGTGCCTCTACCCCAAGCACAAGTGGCCACGCTCTGAGGCAGTTACAGAGACCT
CAGCCCTGGTTCCAAGGGTCAAGAAGACAGTGAGGACATGGACAGCCTCCTTCTACACCATAGGTCCATG
GAGTCAGCCAACATCCTCCTCTATGAAGTTGGAGGGAATATCAATGAGCATCGCCTGGACCCAGATGCCT
ACCTCTTAGATCTGTACCGTGCCAACCCGATGGTGTGGTGGTCTTAAACAGAACCCACC

ACGCGTACGCGGGCCGCTCGAGCAGAACTCATCTCAGAAGAGGATCTGGCAGCAAATGATATCCTGGATT
ACAAGGATGACGACGATAAGGTTTAA

Protein Sequence: >RC228530 representing NM_001164431
Red=Cloning site Green=Tags(s)

MAEPALLPAAQMERLAPGPLASPCPRIPRARIARRCAQRWADLGCSSGSPSSGRMDQLPQKNLLRLHPAGS
 AGCSTGVSESSMDGFWMEVEQIQQRDELREEDSGGNEGQLPEGEAESQWLQDTGLSGLLGGGLDGDHQE
 LLSTLTQTQVAAVCRRLDIYARSVRRQHKTPVRDVRDVFVFNNGKMSSENGDSGMKGAQLSSGASKFPP
 AAEPGGLQEAGREEAFNMDSAYSEQAAVLLQRSRPSRGGTSAWGKCSLPKFTVPKGR LGVTRIGDLSLQ
 DMRKVPSLALIELTALCDILGLDLKRSKAGKWKAAETRLFGVPLDSLLEADHKVLPSTQVPLVLQALLSC
 LEKRGLDMEGILRVPGSQARVKGLEQKLERDFYAGLFSWDEVHNDASDLLKRFIRKLP TPLLTAEYLP
 FAVVPNIPNLKQRLQVLHLLILILPEPNRALKALLEFLRKYVAREQHNKMTLRNVSTVMAPNFLHQGR
 PPKLPKGKEKQLAEGAAEVVQIMVHYQDLLWTVASFLVAQVRKLNDSRRPQLCDAGLKTWLRMHADR
 DKAGDGLEATPKVAKIQVWPVKDPLKVPLTPSTKVAHVLRFTEHLSPGSKGQEDSEDMSLLHHRMS
 ESANILLYEVGGNINEHRLDPDAYLLDLYRANPHGEWVLKQNP

TRTRPLEQKLISEEDLANDILDYKDDDDKV

Chromatograms: https://cdn.origene.com/chromatograms/mk8038_g02.zip

Restriction Sites: SgfI-MluI

Cloning Scheme:



ACCN: NM_001164431

ORF Size: 2022 bp

OTI Disclaimer: Due to the inherent nature of this plasmid, standard methods to replicate additional amounts of DNA in E. coli are highly likely to result in mutations and/or rearrangements. Therefore, OriGene does not guarantee the capability to replicate this plasmid DNA. Additional amounts of DNA can be purchased from OriGene with batch-specific, full-sequence verification at a reduced cost. Please contact our customer care team at custsupport@origene.com or by calling 301.340.3188 option 3 for pricing and delivery.

The molecular sequence of this clone aligns with the gene accession number as a point of reference only. However, individual transcript sequences of the same gene can differ through naturally occurring variations (e.g. polymorphisms), each with its own valid existence. This clone is substantially in agreement with the reference, but a complete review of all prevailing variants is recommended prior to use. [More info](#)

OTI Annotation: This clone was engineered to express the complete ORF with an expression tag. Expression varies depending on the nature of the gene.

Components: The ORF clone is ion-exchange column purified and shipped in a 2D barcoded Matrix tube containing 10ug of transfection-ready, dried plasmid DNA (reconstitute with 100 ul of water).

Reconstitution Method:

1. Centrifuge at 5,000xg for 5min.
2. Carefully open the tube and add 100ul of sterile water to dissolve the DNA.
3. Close the tube and incubate for 10 minutes at room temperature.
4. Briefly vortex the tube and then do a quick spin (less than 5000xg) to concentrate the liquid at the bottom.
5. Store the suspended plasmid at -20°C. The DNA is stable for at least one year from date of shipping when stored at -20°C.

RefSeq: [NM_001164431.2](#)

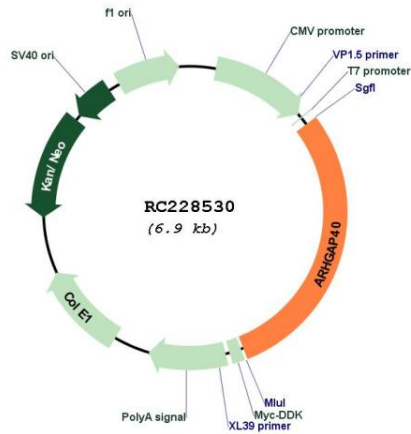
RefSeq ORF: 2025 bp

Locus ID: 343578

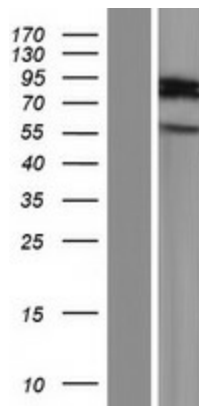
Cytogenetics: 20q11.23

MW: 74.2 kDa

Product images:



Circular map for RC228530



Western blot validation of overexpression lysate (Cat# [LY431558]) using anti-DDK antibody (Cat# [TA50011-100]). Left: Cell lysates from untransfected HEK293T cells; Right: Cell lysates from HEK293T cells transfected with RC228530 using transfection reagent MegaTran 2.0 (Cat# [TT210002]).